

West Cumberland Hospital

Materials Sample Board

12/04/22 Revision: P01







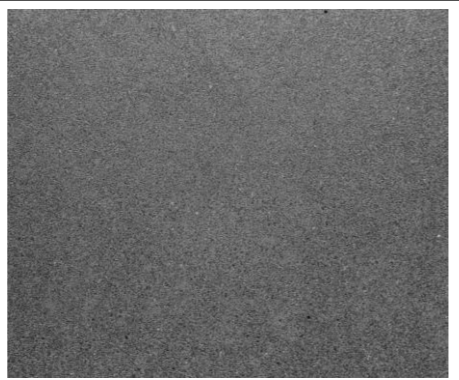




Document Control

Revision	Date	Description	Author
P01	12/04/22	Issued for Planning Conditions Discharge	EA

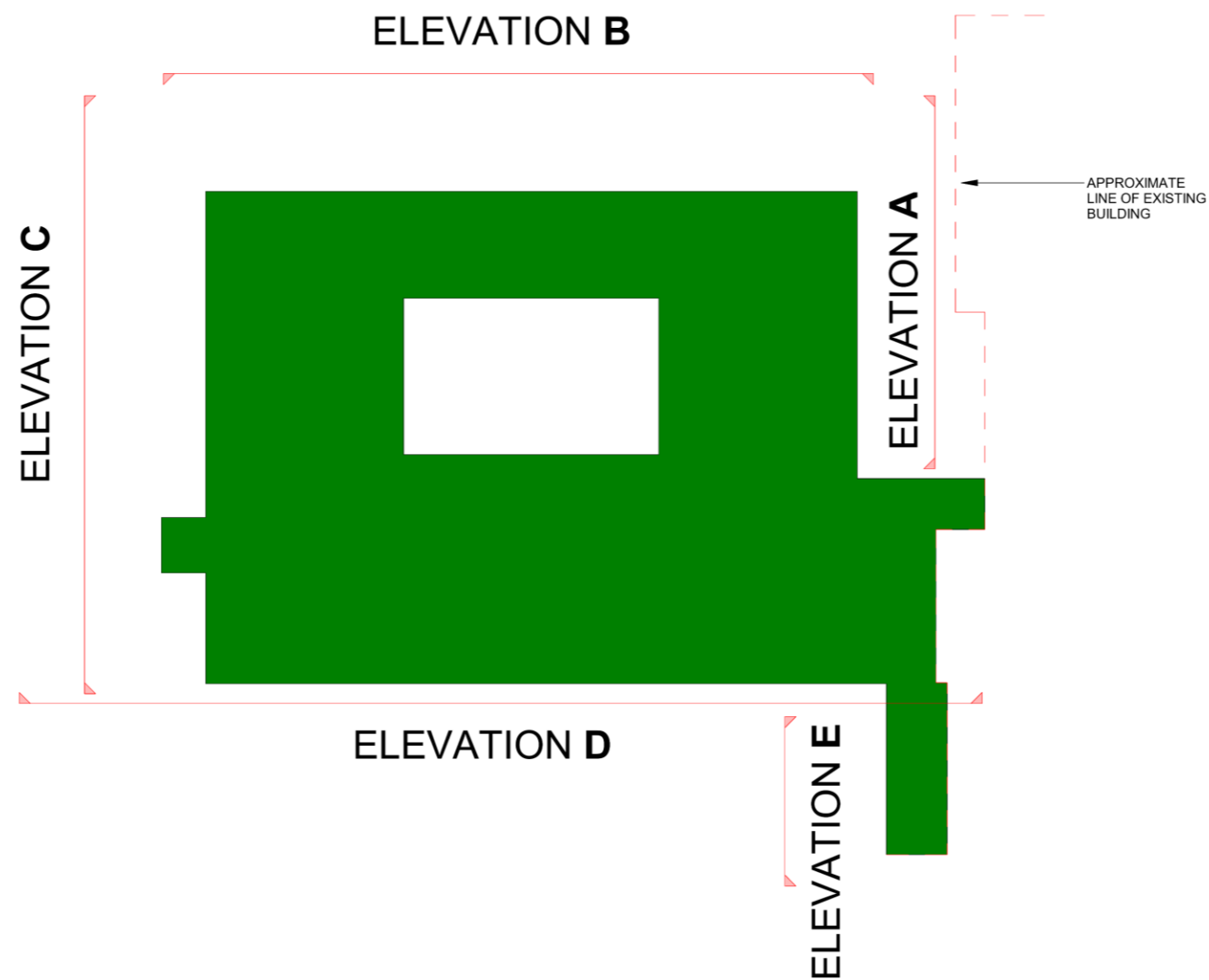


Introduction

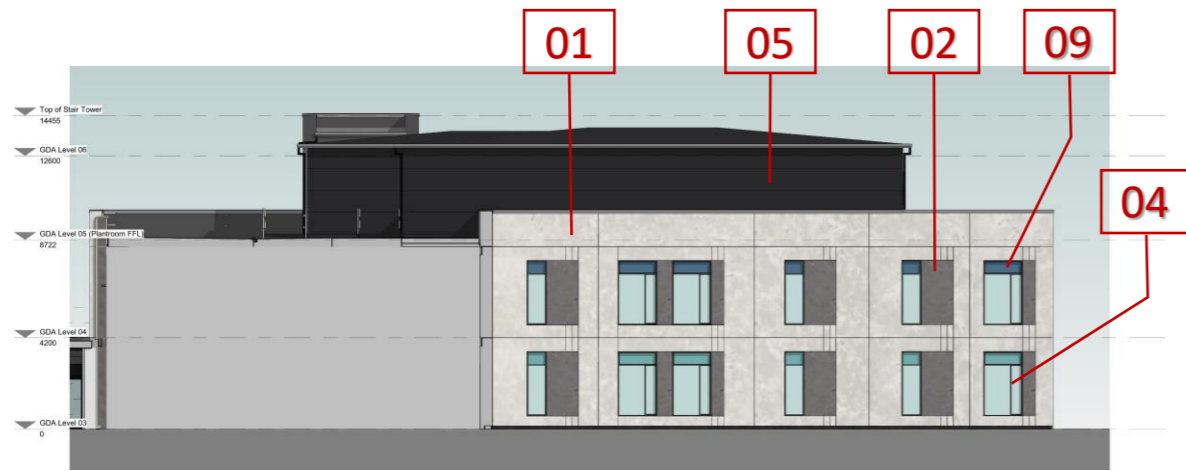
This report shows the samples and details of the materials to be used in the construction of the external surfaces of the West Cumberland Hospital Phase 2 construction.

<p>01. Concrete panel - Main Façade</p>		<p>05. Metal Cladding Panels (EUROCLAD) - RAL 9004</p>	
<p>02. Recessed Concrete Panel</p>		<p>06. Brick Cladding – Blockleys BLACK SMOOTH BRICKS by MBH</p> <p>Mortar: Coloured Mortars by Marshalls Ref: PM96</p>	
<p>03. Concrete panel - Staircore</p>		<p>07. Main Entrance Cladding – RAL 5023</p>	
<p>04. Aluminium Curtain Walling / Windows /External Door</p> <p>All Levels – Frames RAL 7021</p>		<p>08. Aluminium Louvre panel - RAL 9004</p>	
<p>09. Aluminium Window Spandrel Panels</p> <p>Level 03 Spandrel Panels - RAL 6027; Level 04 Spandrel Panels - RAL 5024 To match Phase 1</p>			

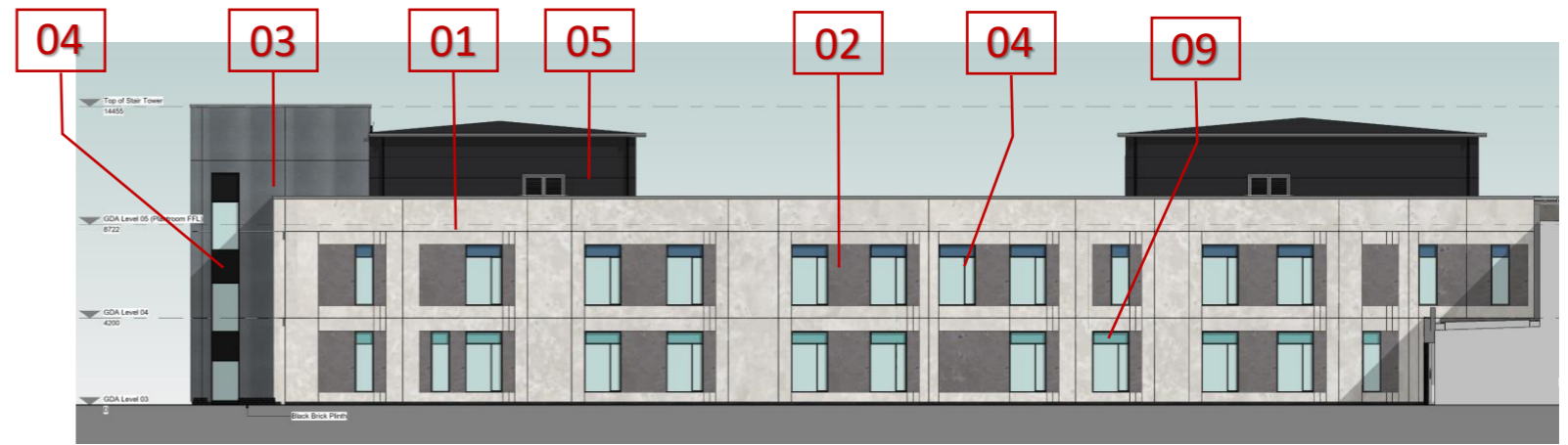
Elevation A, B, C, D & E



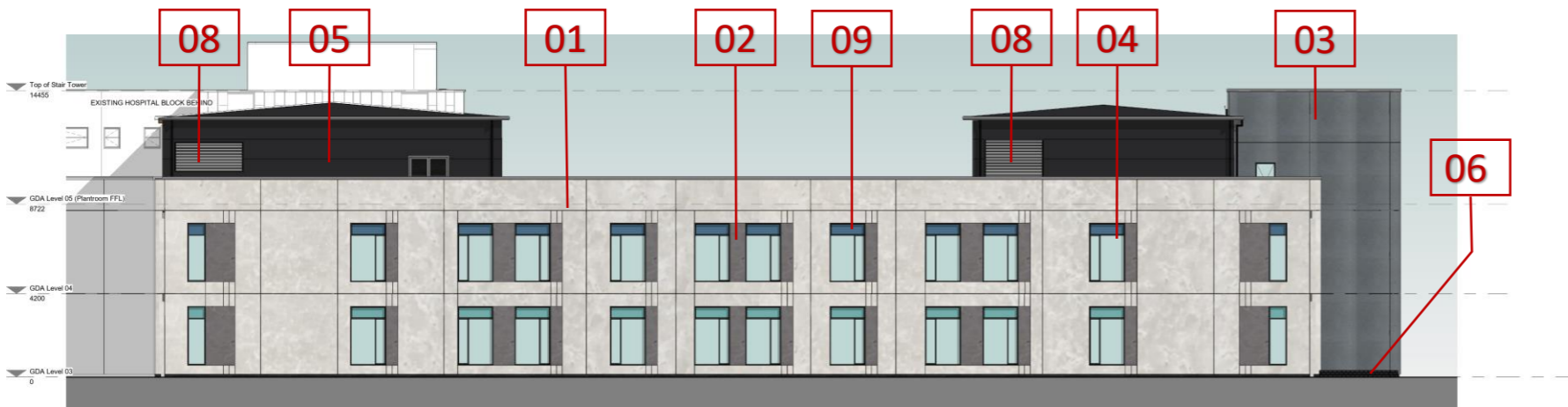
1.1 Elevations A, B, C, D & E



Elevation A



Elevation D

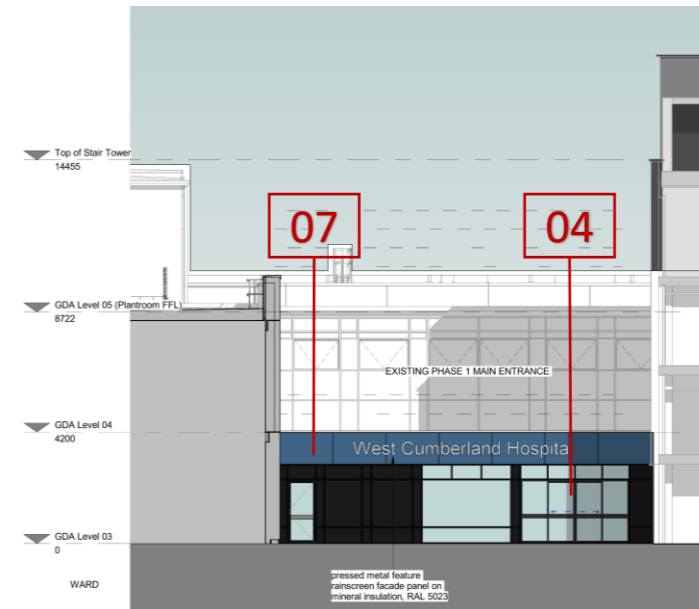


Elevation B

Concrete Panel Samples



Elevation C



Elevation E



Gilling Dod Architects
The Cruck Barn
Duxbury Park
Chorley
Lancashire
PR7 4AT

01257 260070

gillingdod.com