



WEXFORD CS20 M4(2)

Planning Drawings

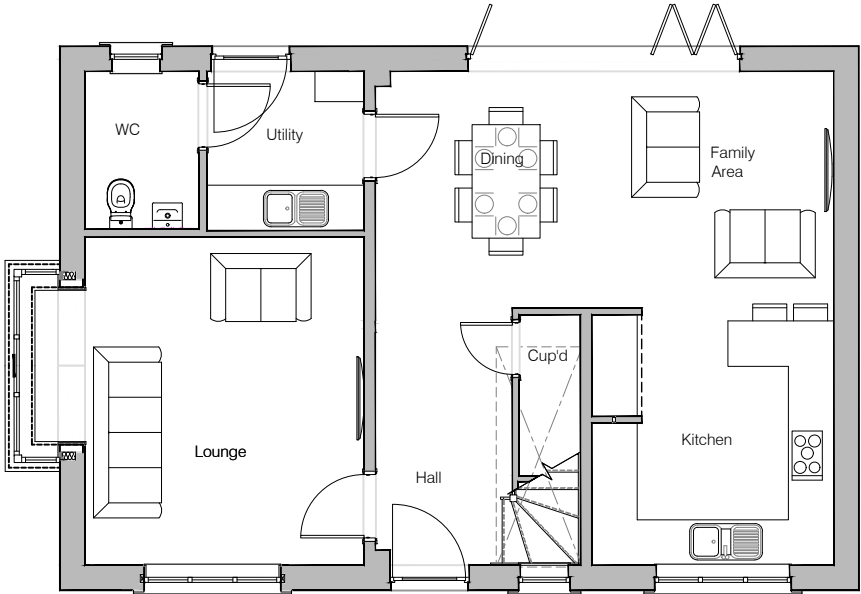
GF: 67.34 m2 (724.84 ft2)
FF: 65.96 m2 (709.99 ft2)
TOTAL: 133 m2 (1435 ft2)

© **Story Homes.**

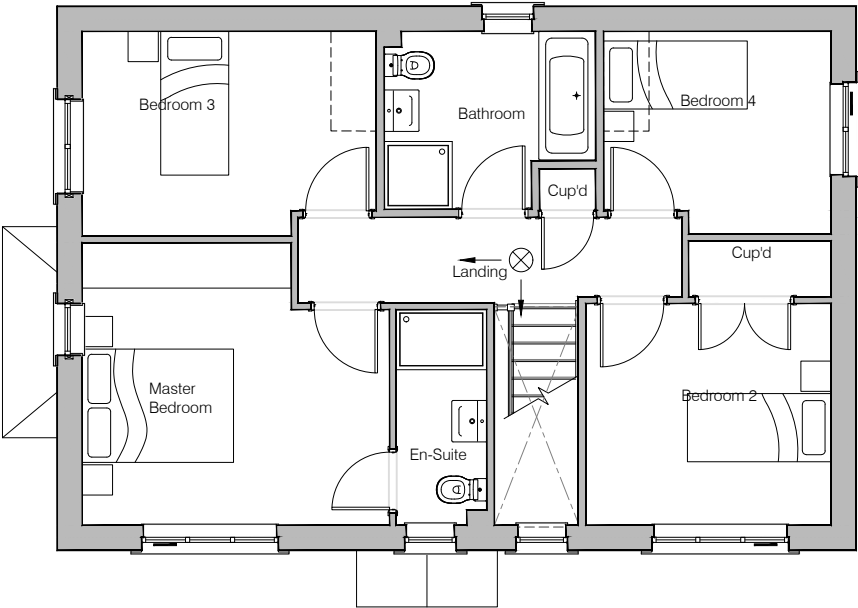
Story House, Lords Way, Kingmoor Business Park,
Carlisle, Cumbria. CA6 4SL.

Tel 01228 404550
Fax 01228 404551

FRONT FACING



Ground Floor Layout



First Floor Layout

NOTES	
Technical housing standards – Nationally described space standard	
Area (m ²)	133.28
Designation	4B 5P
Bed 1	14.25
Bed 2	9.32
Bed 3	10.13
Bed 4	7.90
Bed 5	-
Storage (m ²)	3.32



HOUSE TYPE			
WEXFORD M4(2)			
DRAWING			
Planning Layout 2 (Front)			
DRAWN BY	MQ	DATE	21/03/23
CHECKED BY	-	SCALE	1:100@A3
DWG PACK	CS/20	DRAWING NUMBER	WXD-PLP1
Revisions		Notes	Date
© Story Homes. Story House, Lords Way, Kingmoor Business Park, Carlisle, Cumbria. CA6 4SL Tel 01228 404550 Fax 01228 404551			

FRONT FACING



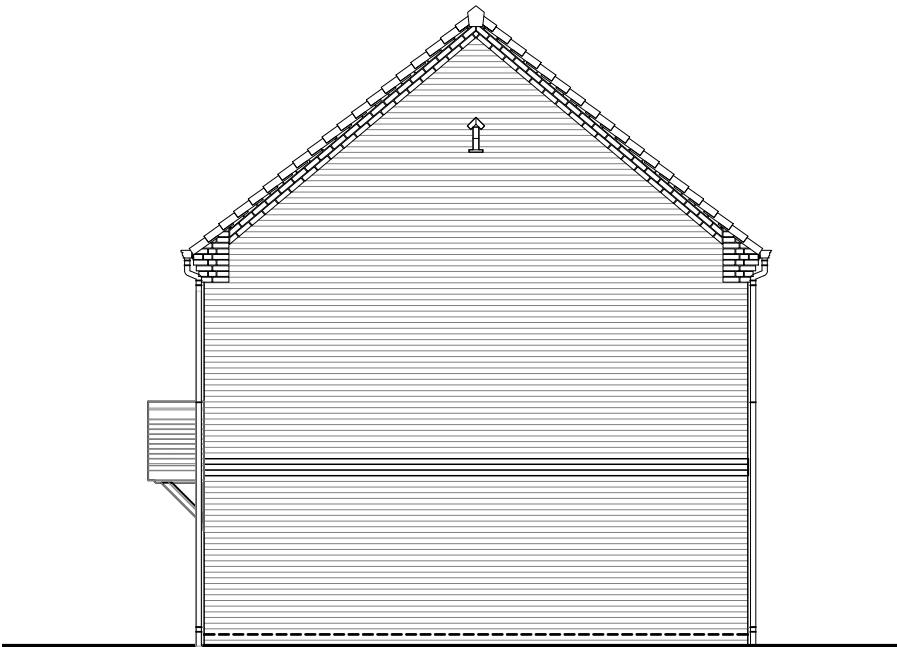
Front Elevation



Left Elevation



Rear Elevation



Right Elevation

NOTES



HOUSE TYPE
WEXFORD M4(2)

DRAWING
Planning Elevation 1/1 (Front)

DRAWN BY	MQ	DATE	21/03/23
CHECKED BY	-	SCALE	1:100@A3
DWG PACK	CS/20	DRAWING NUMBER	WXD-PLE1/1
		REVISION	-

Revisions	Notes	Date