

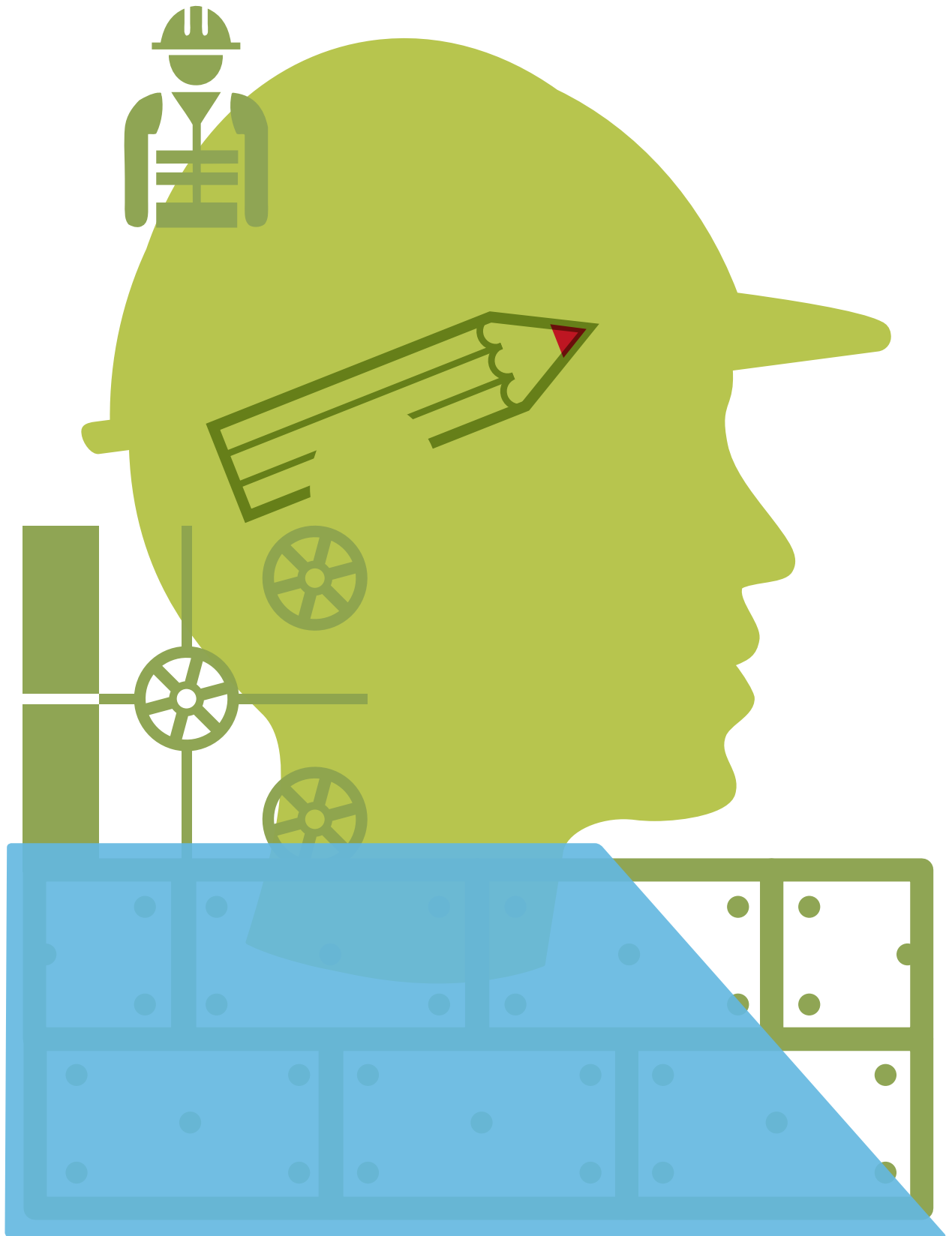


SYSTEM SOLUTIONS

# Thin Coat Systems

Creating Attractive Façades





# System Overview

Thin coat render finishes have been used throughout Europe since their introduction in the 1950's. The UK in particular has witnessed a significant rise in popularity, as we see installers and end clients recognising the benefits of a contemporary, yet durable finish.

Wetherby's versatile Thin Coat Render Systems are available in endless texture and colour options enabling specifiers flexibility whilst delivering a clean, modern and vapour permeable façade.

With a wealth of options from clean contemporary exteriors, replication of stone blockwork or ashlar jointing facades, we're confident we have a product that can meet any design aspiration. While our thin coat renders are often utilised for full elevations, they can also be effectively combined with some of our other finishes, such as brick slips or spar dash, to create contrasting visual interest to facades.





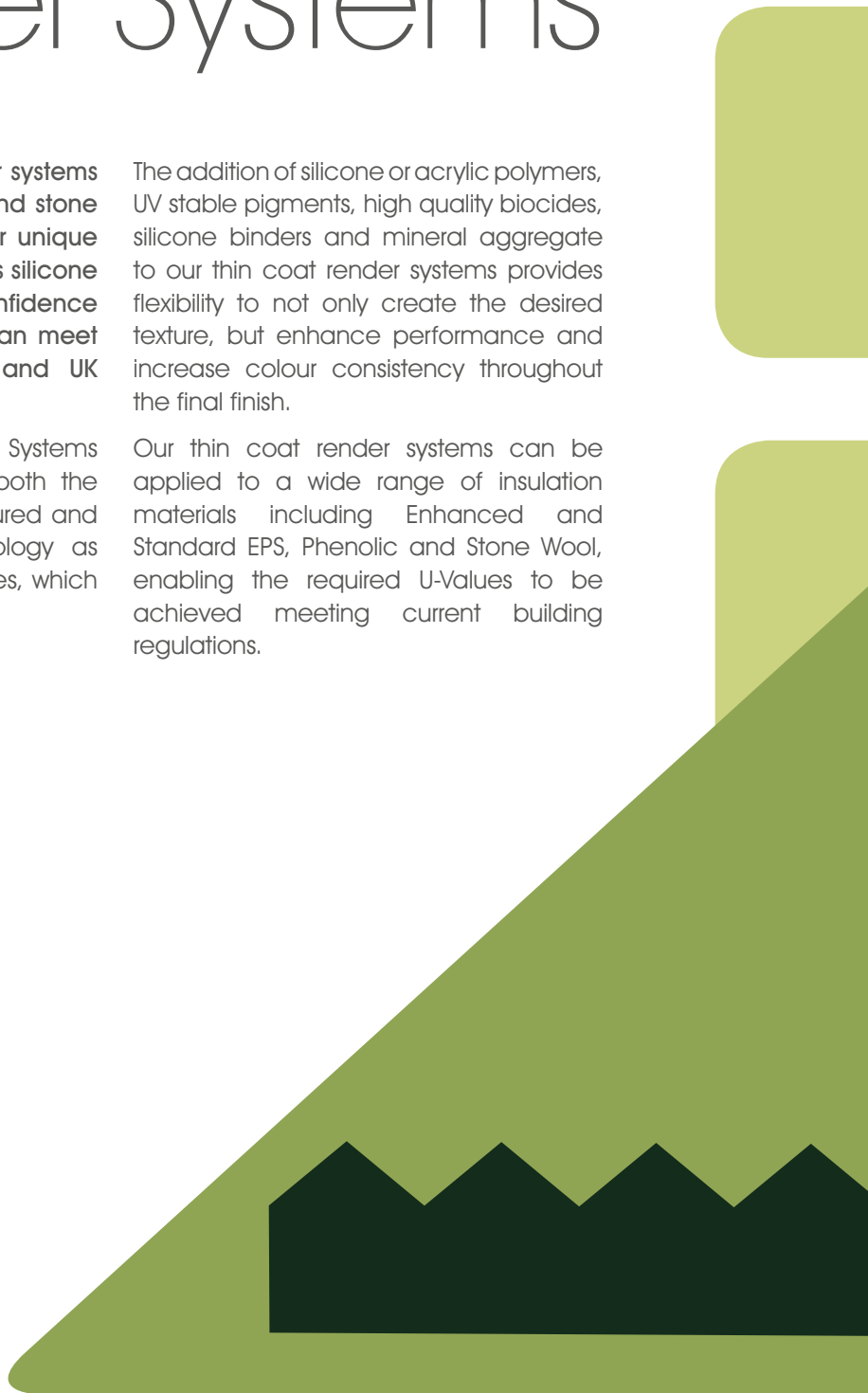
# Thin Coat Render Systems

Our portfolio of thin coat render systems comprises of silicone, acrylic and stone render products, along with our unique mineral render and four seasons silicone render. Providing you with confidence that we have a product that can meet any design criteria, budget and UK weather constraint.

Wetherby Thin Coat Render Systems do not contain cement and both the primer and finish are manufactured and tinted using the same technology as paint, unlike monocouche finishes, which contain cement.

The addition of silicone or acrylic polymers, UV stable pigments, high quality biocides, silicone binders and mineral aggregate to our thin coat render systems provides flexibility to not only create the desired texture, but enhance performance and increase colour consistency throughout the final finish.

Our thin coat render systems can be applied to a wide range of insulation materials including Enhanced and Standard EPS, Phenolic and Stone Wool, enabling the required U-Values to be achieved meeting current building regulations.





#### **LIGHTWEIGHT**

Ideal for applying lightweight EWI systems or frames, our thin coat renders can be applied at a thickness of just 1.5mm to offer a lightweight yet durable finish.

#### **VAPOUR PERMEABLE**

It is vital with EWI systems, that moisture generated within the property can pass through the system, which is why all of our thin coat renders are vapour permeable to allow the building to breathe and reduce the risk of condensation.

#### **FLEXIBLE**

The flexible nature of our thin coat renders makes them ideal for substrates likely to have increased movement such as timber or steel frame structures.

#### **UV STABLE**

The pigments, resins, binders and aggregates in Wetherby Thin Coat Render finishes are highly UV resistant and retain their colour and stability, ensuring a long-lasting finish.

#### **ANTI-ALGAE**

Our thin coat renders have been specifically developed to combat the algae growth that has escalated due to the climate changes over recent years. Our products contain biocides and algicides that leach out over time to help prevent unsightly growth on a property.

#### **WATER REPELLENCY**

The addition of silicone to our thin coat renders increases the product's repellency, significantly reducing the dirt and environmental pollution that can adhere to the surface, while also improving the self-cleaning properties of the finish, which occur through rainfall on the silicone.





# Silicone and Acrylic Render

The most widely specified finish for external wall insulation, Wetherby's silicone and acrylic renders are ideal for both refurbishment and new build projects across a wide range of sectors including residential, education, commercial and leisure.

With high performance qualities, the durable finishes boast a flexible anti-crack formulation, while UV resistant pigments allow large surface areas to be seamlessly rendered achieving perfect colour consistency. It's easy to see why they are such a popular choice.

Our silicone and acrylic renders can be tinted in more than 380 different NCS colour shades, as well as RAL or BS colour options. Each comes with a variety of textures offering a solution that can meet any desired look.

Often thought about as a simple finish for full elevations, silicone and acrylic renders can be used in a mix of complementary colours for bespoke panels or around windows to create real depth and interest to facades. The versatile finishes can also be effectively combined with other decorative finishes, such as brick slips, to create a visually striking exterior.







# Four Seasons Premium Silicone Render

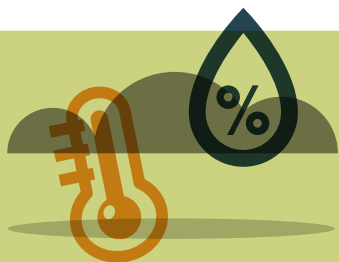
With the changeable UK climate often causing project delays, Wetherby Four Seasons Premium Silicone Render is the ideal solution to combat adverse weather conditions experienced in the UK.

Our Four Seasons render offers significantly improved rain resistance. This allows rain damage to be limited after application and during the curing process reducing the risk of wash-offs and minimising associated damage repair costs.

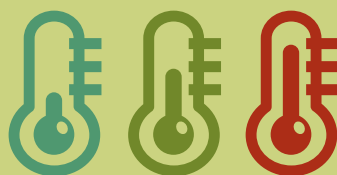
Four Seasons can be applied at an ambient and surface temperature of 1 to 30°C, and relative air humidity of up to 95%, increasing the application days available. As a result, it can be used an average of 55 days more per year, considerably increasing productivity during cold or wet periods throughout the year.

Available in more than 380 different NCS colour shades and a variety of textures, our Four Seasons Silicone can create any desired appearance, providing flexibility for architects.





Can be applied in  
humidity up to 95%



Can be applied in  
+1°C to 30°C



Rainproof  
Technology



# Mineral Render

Wetherby Mineral Render has been specially developed to combat the issues associated with applying external render in the adverse weather conditions often experienced in the UK.

It is widely acknowledged that thin coat external renders can experience wash-offs and damage following heavy rainfall or damp climates. If the conditions are too wet, humid or cold when the render is applied, drying times can be significantly extended. We provide the ideal solution with our Mineral Render and is predominantly being chosen for a wide variety of new build and refurbishment projects where delays due to poor weather conditions cannot be afforded.

Our Mineral Render works in a different way to silicone & acrylic renders, as it relies on a chemical reaction during the curing process and cures independently of humidity, unlike silicone and acrylic which set by air drying. Although providing a similar appearance to silicone and acrylic finishes, our Mineral Render dries considerably quicker and offers a more cost-effective solution.

Supplied pre-bagged, our Mineral Render only requires the addition of clean water before application. The standard off-white finish can be simply transformed with the application of a silicone paint or stain as a final top coat, which is available in more than 380 different colours. This allows an external façade to be created, that complements existing neighbouring properties or meets any specific design criteria.





**Reduced  
Drying Times**





# Silicone, Acrylic and Mineral Render Colour Options

Our highly engineered colour mixing technology allows us to produce hundreds of different colours to match any design criteria. While our standard colour chart offers 100 of the most popular shades to choose from, customers can also select shades from our more comprehensive colour swatch containing more than 380 shades based on the NCS colour system.

New build commercial projects can often demand exteriors that require the inclusion of corporate colours. In which case, we can tint our finishes, or supply paint for our Mineral Render, to British Standard, RAL and other manufacturers' colours, creating bespoke shades for any individual construction need.

We can also offer a colour matching service designed specifically for refurbishment and renovation projects. Developed to seek the closest match possible to existing substrates including brick, stone, timber or concrete allowing a seamless, professional finish to be achieved.







# Silicone, Acrylic and Mineral Render 100 Standard Colours

We have a comprehensive range of 100 standard colours that are available for our Silicone, Four Seasons and Mineral Render Products.



						
White	0500N	0502G50Y	0502R50B	0502Y	0502Y50R	0505B20G
						
0505G90Y	0505Y10R	050520R	0505Y30R	0505Y90R	0507B	0507Y40R
						
0507Y80R	0603R80B	0603Y40R	0804Y10R	0907R90B	0907Y30R	0510B10G
						
0510G30Y	0510R30B	0510Y10R	0510Y20R	0510Y30R	0510Y40R	1000N
						
1002Y50R	1005R50B	1005R80B	1005Y10R	1005Y30R	1010Y	1010Y20R
						
1015Y	1015Y20R	0515Y30R	0515Y90R	0515R90B	0520G30Y	0520G90Y





Images of colours have been reproduced as accurately as possible but there is likely to be a slight variation in colour. We always recommend physical samples are ordered prior to purchasing any materials.



# Silicone and Acrylic Render Finish Options

We offer two ranges of silicone and acrylic render, both available in different grain sizes to allow the desired texture to be achieved and a variety of appearances to be created. Our 'K' offering is available in four standard grain sizes; 1mm, 1.5mm, 2mm and 3mm, while our 'R' range can be selected in either 1.5mm or 2mm.



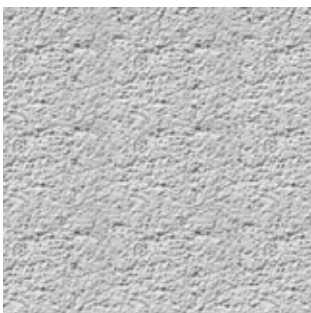
■ 1mm K



■ 1.5mm K



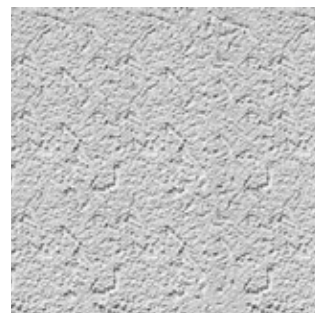
■ 2mm K



■ 3mm K



■ 1.5mm R



■ 2mm R

Images of textures have been reproduced as accurately as possible but there is likely to be a slight variation. We always recommend physical samples are ordered prior to purchasing any materials.

# Render Protector

To enhance the performance of our thin coat render systems, we recommend applying Wetherby Render Protector.

A unique, highly water repellent coating, our Render Protector provides superior protection against algae, mould, pollution, staining and dirt.

This is an ideal solution for protecting facades located in polluted and damp areas or buildings situated in highly exposed areas. It's suitable for a wide range of substrate materials including silicone, acrylic, mineral render and polymer modified renders.

Render Protector is a low-film-build coating to produce outstanding protective properties:

- ✓ Improves weather resistance
- ✓ Reduces dirt pick up
- ✓ Translucent coating
- ✓ Protects against algae, mould and lichen



Example of beading



Algae on brick





# Stone Render

Stone facades are fast becoming the preferred finish for properties in many areas of the UK. New pressures to complement neighboring communities are also on the rise leading developers and house providers to face new challenges when planning constraints stipulate the matching or replication of existing stones.

Sourcing and installing genuine stone can be time and cost intensive, but Wetherby Stone Render offers the ideal solution as a cost-effective alternative to achieving the appearance of stone.

Offering exceptional durability, our Stone Render is highly weather resistant, making it ideal for use on properties exposed to severe climate changes. The stone render finish can be applied to a range of our insulants, ensuring a robust thermally efficient EWI system is installed.

With a range of finish options, our stone render makes it possible to replicate a stone block façade by scoring the desired pattern into the basecoat, before spraying the render over the recessed joints. Other options include using a dark stone tape or painted joint to provide a clean jointed look, which clearly breaks up the panels and is a popular choice for new build projects.

- HIGHLY WATER AND WEATHER RESISTANT
- WASHABLE
- ABRASION RESISTANT
- ALGAE AND FUNGI RESISTANT
- UV STABLE COATING
- HIGHLY DECORATIVE FINISH





# Colour Options

Incorporating some of the most popular British stones, Wetherby Stone Render is available in a range of eight standard colours.



■ Bath Stone



■ Buff Stone



■ Callow



■ Cotswold Cream



■ Country Stone



■ Perryfield Whitbed



■ Red Sand Stone



■ Skipton Stone



Images of colours have been reproduced as accurately as possible but there is likely to be a slight variation in colour. We always recommend physical samples are ordered prior to purchasing any materials.





# Substrates

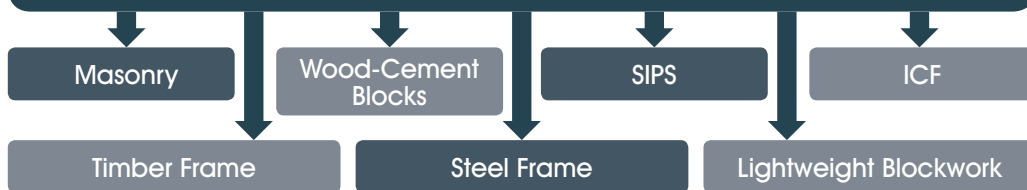
## RENDER ONLY

For render only (direct to substrate) applications, our thin coat renders can be applied directly to the following popular substrates:



## INSULATED RENDER SYSTEM

If insulation, or a render carrier board is used, our thin coat finishes can be applied to the following substrates:



\*Alternative substrates may be used. Please contact our Technical Team for more information.

# Insulants



Thermal Performance and U values

Insulation	Thickness (mm)	K Value
EPS	20-400mm+	0.038 W/mK
Enhanced EPS	20-400mm+	0.032 W/mK
Stone Wool	30-270mm+	0.036 W/mK
Phenolic	20-120mm+	0.020 W/mK*

More detailed information on our insulation materials can be found on our website at [wbs-ltd.co.uk](http://wbs-ltd.co.uk)

\*Insulants less than 50mm may have different thermal values.



# Approvals & Certifications

---



BBA Certificate Number 09/4625 - Product Sheet 2 covers Enhanced EPS and Phenolic insulation and Silicone Render finish

BBA Certificate Number 15/5192 - Product Sheet 1 covers Enhanced and Standard EPS insulation with Silicone Render, Acrylic Render, Mineral Render, Mineral Render PLUS and Stone Render finishes

---



Wetherby Building Systems Ltd are certified to Quality Standard ISO-9001, Environmental Standard ISO-14001, and Occupational Health & Safety Management Standard BS OHSAS 18001 (Certificate No. 16512)

---



Full members of the National Insulation Association

---



INCA System Designer

---







#### **Head Office**

Wetherby Building Systems Limited  
1 Kid Glove Road  
Golborne Enterprise Park  
Golborne  
Greater Manchester  
WA3 3GS

Technical Support: 0800 107 32 99  
Samples: 0800 107 32 88  
[wbs-ltd.co.uk](http://wbs-ltd.co.uk)



#### **Glasgow**

62 Hydepark Street  
Glasgow  
Lanarkshire  
G3 8BW  
Tel: 0141 221 8115

#### **Bridgend**

Unit 17A  
Brynmenyn Industrial Estate  
Millers Avenue  
Bridgend  
CF32 9TD  
Tel: 01656 720 422