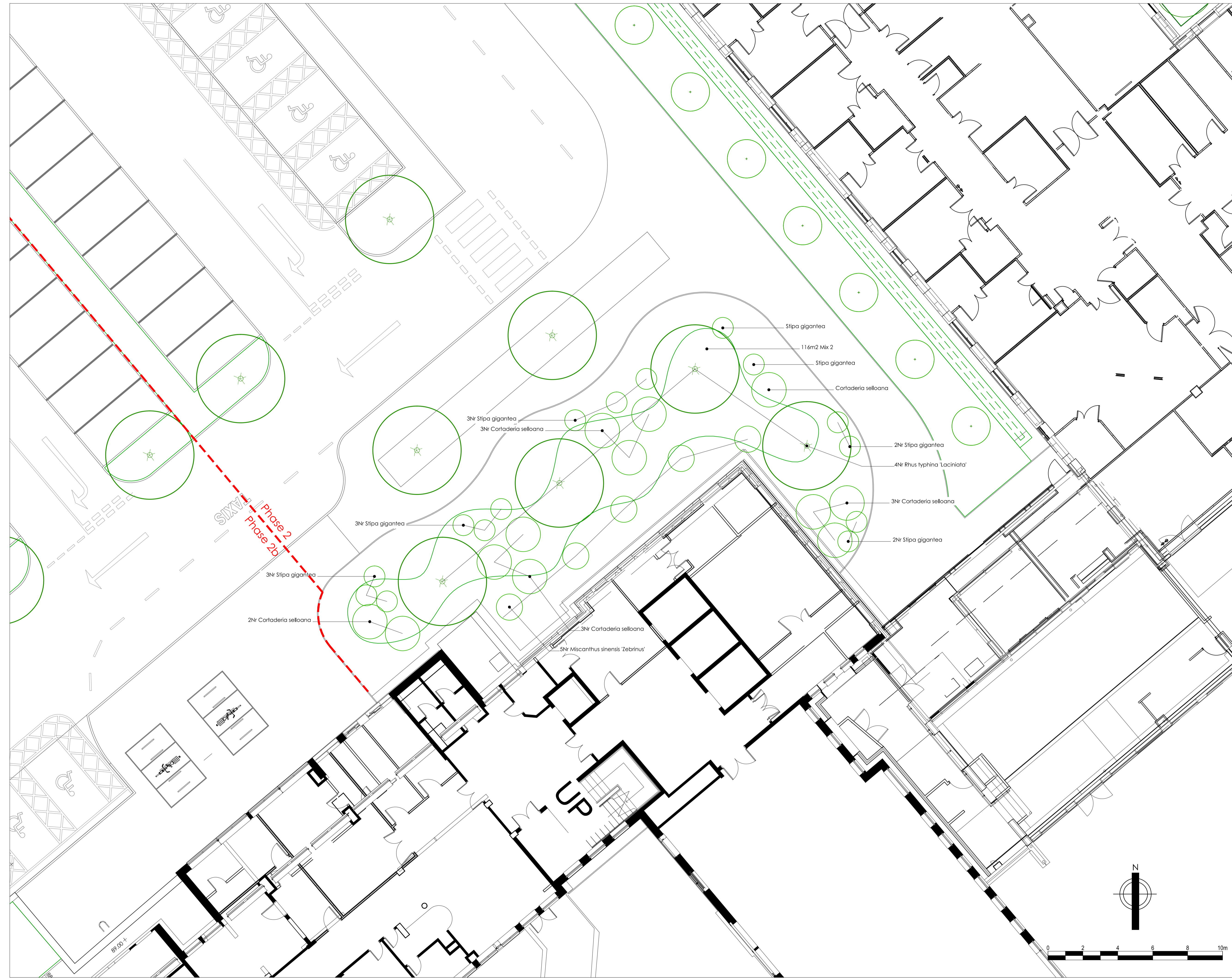
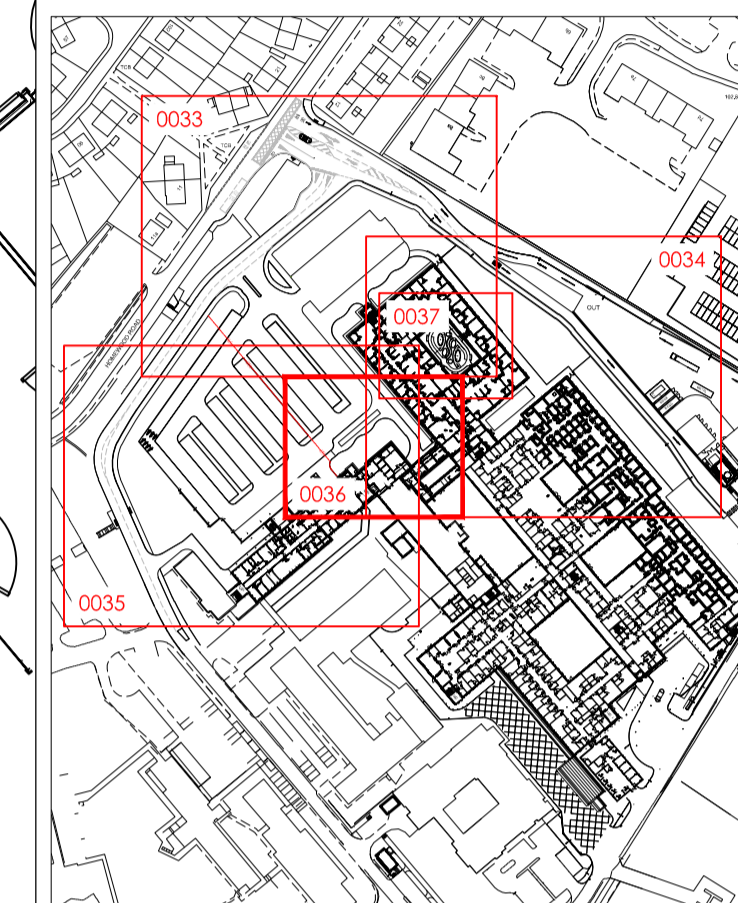


NOTES:

DO NOT SCALE. Use figured dimensions only. The contractor is requested to check all dimensions before the work is put in hand. Copyright of this drawing belongs solely to Iteriad Ltd. This drawing must only be used for the purpose for which it is supplied and its contents must not be reproduced for any purpose without written permission. Areas indicated, or areas calculated from this drawing should be used for valuation purposes or as the basis for development contracts. Iteriad Ltd is a limited liability company registered in England and Wales. Number 7966573

NOTES:

To be read in conjunction with Engineers & Architects information



Phase 2
Phase 2a

- Stipa gigantea
- 116m2 Mix 2
- Stipa gigantea
- Cortaderia selloana
- 2Nr Stipa gigantea
- 4Nr Rhus typhina 'Laciniata'
- 3Nr Cortaderia selloana
- 2Nr Stipa gigantea
- 3Nr Stipa gigantea
- 3Nr Cortaderia selloana
- 3Nr Stipa gigantea
- 2Nr Cortaderia selloana
- 3Nr Cortaderia selloana
- 3Nr Cortaderia selloana
- 5Nr Miscanthus sinensis 'Zebrinus'

P02	Updated to GDA latest layout	AP	KH	07.04.22
P01	First Issue	AP	KH	19.08.21
REV	DETAILS	DRAWN BY	CHECKED BY	CHECKED DATE

CLIENT
North Cumbria Integrated Care NHS Foundation Trust

MASTERPLANNERS/LANDSCAPE ARCHITECTS
(iteriad)
Studio
2 Cragwood Cottages,
Ecclefechan,
West Lothian,
Midlothian
LA23 1JG
T: (+44) 15394 43018
E: studio@iteriad.com
W: www.iteriad.com

PROJECT TITLE
West Cumberland Hospital Phases 2

DRAWING TITLE
MAIN ARRIVAL SPACE DETAILED PLANTING PLAN SHEET 4

SCALE: 1:100@A1
DRAWN BY: AP
DATE: 19.08.21

PURPOSE: For Approval
STATUS: S4

JOB/DRAWING NUMBER: WCPH2-ITR-00-XX-DR-L-0036
REVISION: P02

