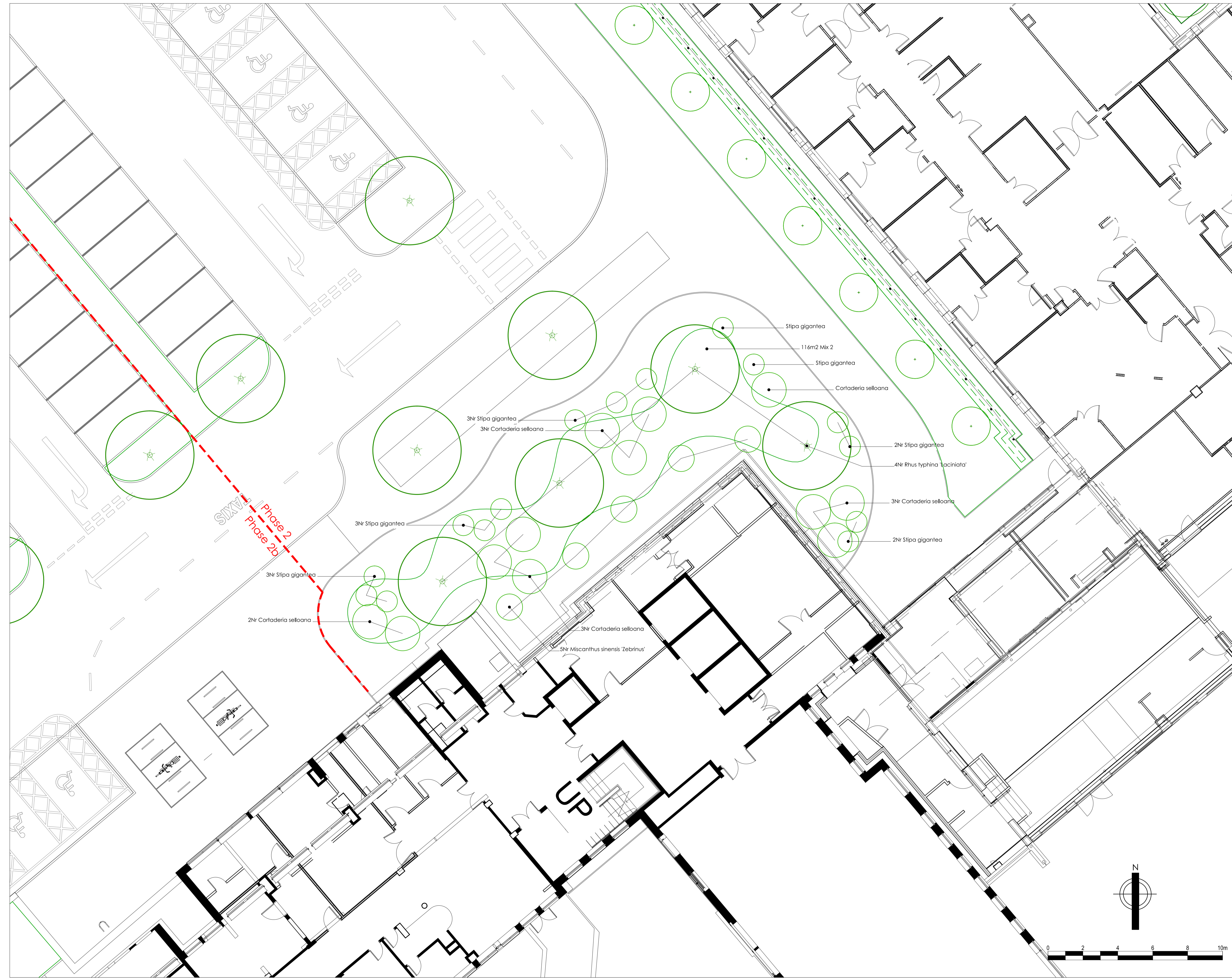
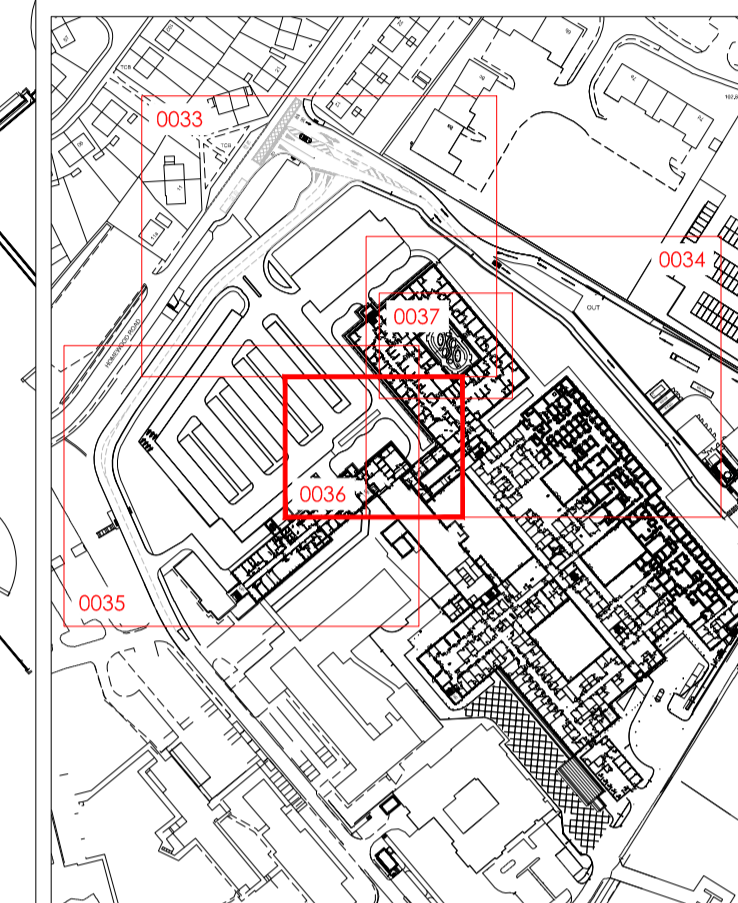


**NOTES:**

DO NOT SCALE. Use figured dimensions only. The contractor is requested to check all dimensions before the work is put in hand. Copyright of this drawing belongs solely to Iteriad Ltd. This drawing must only be used for the purpose for which it is supplied and its contents must not be reproduced for any purpose without written permission. Areas indicated, or areas calculated from this drawing should be used for valuation purposes or as the basis for development contracts. Iteriad Ltd is a limited liability company registered in England and Wales. Number 7966573

**NOTES:**

To be read in conjunction with Engineers & Architects information



Phase 2  
Phase 2a

- Stipa gigantea
- 116m2 Mix 2
- Stipa gigantea
- Cortaderia selloana
- 2Nr Stipa gigantea
- 4Nr Rhus typhina 'laciniata'
- 3Nr Cortaderia selloana
- 2Nr Stipa gigantea
- 3Nr Stipa gigantea
- 3Nr Cortaderia selloana
- 3Nr Stipa gigantea
- 2Nr Cortaderia selloana
- 3Nr Cortaderia selloana
- 5Nr Miscanthus sinensis 'Zebrinus'

|     |                                       |          |            |              |
|-----|---------------------------------------|----------|------------|--------------|
| C01 | First issue for construction approval | AP       | KH         | 27.06.22     |
| REV | DETAILS                               | DRAWN BY | CHECKED BY | CHECKED DATE |

CLIENT  
**North Cumbria Integrated Care NHS Foundation Trust**

MASTERPLANNERS/LANDSCAPE ARCHITECTS  
**(iteriad)**  
Studio  
2 Cragwood Cottages,  
Ecclefechan,  
West Lothian,  
Midlothian  
EH20 9JG  
T: (+44) 15394 43018  
E: studio@iteriad.com  
W: www.iteriad.com

PROJECT TITLE  
**West Cumberland Hospital Phase 2**

DRAWING TITLE  
**MAIN ARRIVAL SPACE  
DETAILED PLANTING PLAN  
SHEET 4**

SCALE DRAWN BY DATE  
**1:100@A1 AP 27.06.22**

PURPOSE STATUS  
**For Construction Approval S4**

JOB/DRAWING NUMBER REVISION  
**WCHPH2-ITR-00-XX-DR-L-0036 C01**