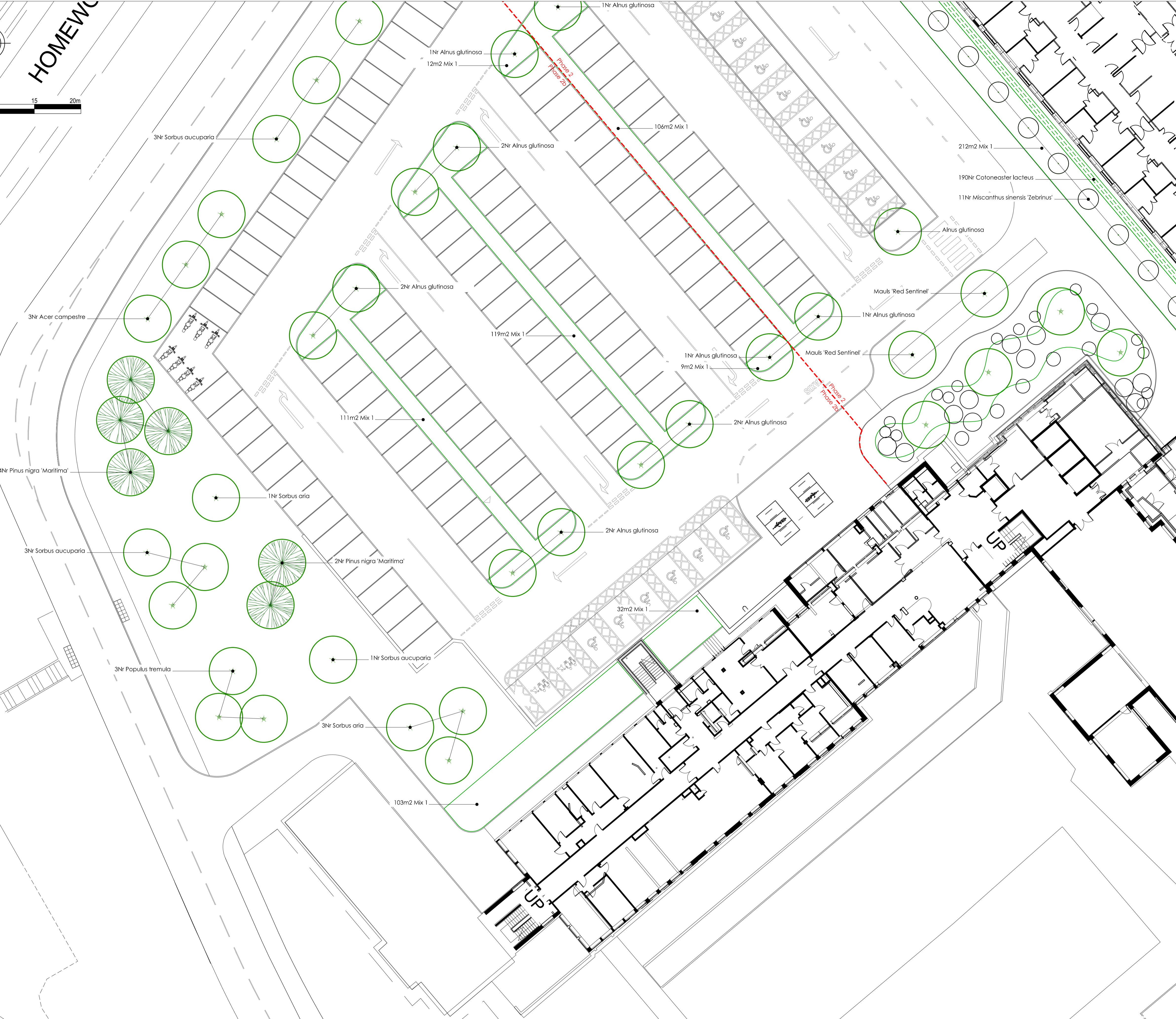
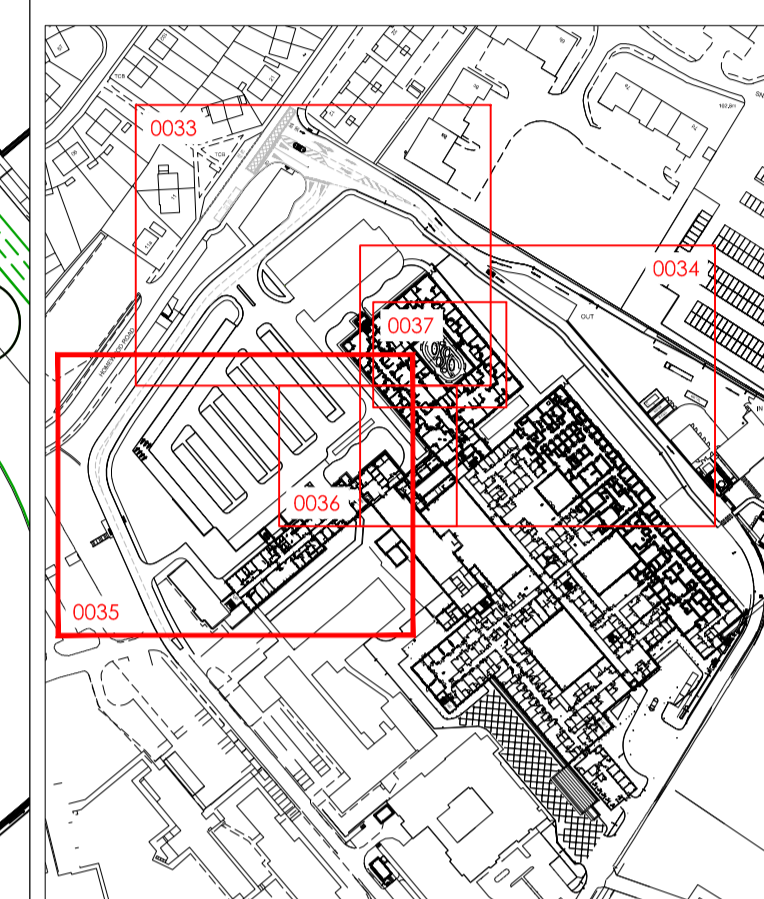


HOMEWOOD



NOTES:
 DO NOT SCALE. Use figured dimensions only. The contractor is requested to check all dimensions before the work is put in hand. Copyright of this drawing belongs solely to Iteriad Ltd. This drawing must only be used for the purpose for which it is supplied and its contents must not be reproduced for any purpose without written permission. Areas indicated, or areas calculated from this drawing should be used for valuation purposes or as the basis for development contracts. Iteriad Ltd is a limited liability company registered in England and Wales. Number 7966573

NOTES:
 To be read in conjunction with Engineers & Architects information



P03	Updated to GDA latest layout	AP	KH	07.04.22
P02	Layout updated	AP	KH	22.12.21
P01	First Issue	AP	KH	19.08.21
REV	DETAILS	DRAWN BY	CHECKED BY	CHECKED DATE

CLIENT
North Cumbria Integrated Care NHS Foundation Trust

MASTERPLANNERSLANDSCAPE ARCHITECTS
(iteriad)
 Studio
 2 Cragwood Cottages,
 Escrick,
 Wetherby,
 West Yorkshire,
 LS23 7UG
 T: (+44) 15394 43018
 E: studio@iteriad.com
 W: www.iteriad.com

PROJECT TITLE
West Cumberland Hospital Phases 2

DRAWING TITLE
SOUTH DETAILED PLANTING PLAN SHEET 3

SCALE	DRAWN BY	DATE
1:200@A1	AP	19.08.21

PURPOSE	STATUS
For Approval	S4

JOB/DRAWING NUMBER	REVISION
WCHPH2-ITR-00-XX-DR-L-0035	P03