

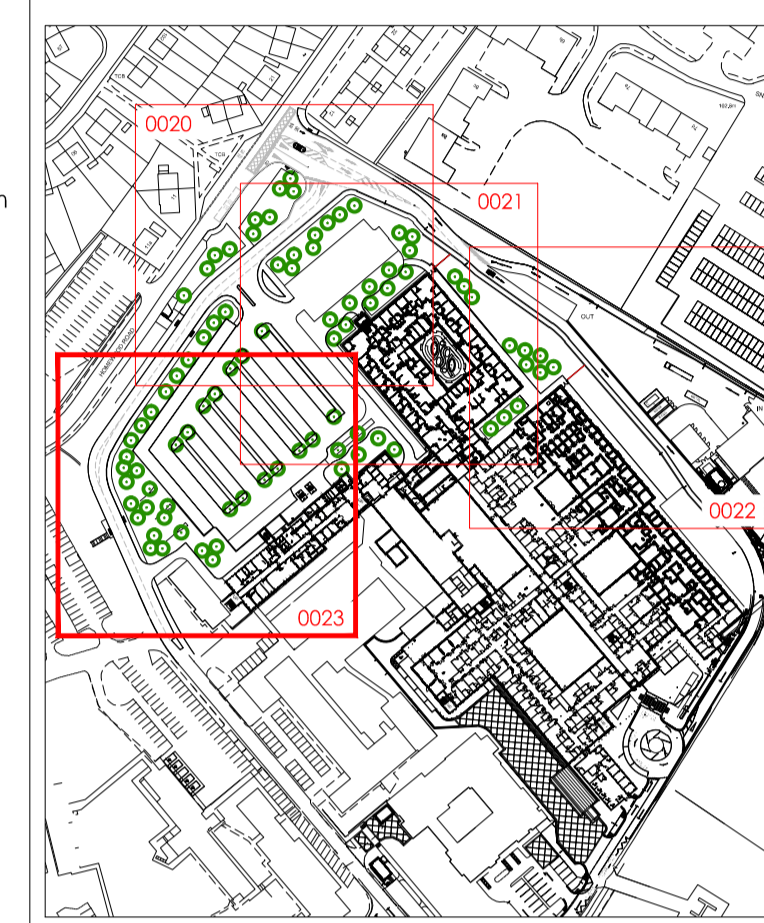
HOMEWICK



- KEY**
- Q22.107J Asphalt Vehicular Routes to engineers design & specification
 - Q24.119 Permeable Parking Bays to engineers design & specification
 - Q22.110A Black Macadam Footpaths / Pedestrian Routes to engineers design & specification
 - Q22.111 Buff Macadam Footpaths / Pedestrian Routes to engineers design & specification
 - Q22.111 Coloured Macadam Panel (Colour 2 T8C) to engineers design & specification
 - Q25.120A Timber Effect Concrete Paving
 - Q26.360A Rubber Surfacing to Courtyards & Gardens
 - Q23.175J White Decorative Loose Gravel, Pebbles & Cobbles with Planting Amongst
 - Q23.130 500mm Maintenance Strip to Building Edge Self Binding Breerton Type Gravel/Crusher Run
 - D41.211J Proposed Retaining Wall to Engineers Design (Indicative lines awaiting levels info)
 - Q30.400 Amenity Grass (seeded)
 - Q31 Low/Ground Cover Native & Ornamental Planting
 - Q31 Sensory Ornamental Planting to Arrival Space & Garden with Specimen Shrubs & Grasses
 - Q31 Screen Hedge
 - Q31 Native / Ornamental Trees
 - Q31 Small Ornamental Trees
 - Q31 Specimen Shrubs
 - Q41.110 Balustrade to top of Embankment & Retaining Walls (where shown)
 - Q41.130 Timber Knee Rail
 - Q41.140 Vehicle Impact Barrier to Footpath with High Trief Kerb Protection
 - Q40.125A Q40.360A 2.4m Security Weld-mesh Fencing & Gates
- GROUP 1 FURNITURE**
- Q50.190A Vehicle Impact Ballard Type A (fixed) Vehicle Impact Ballard Type B (removable)
 - B91.340 Q50.210 Cycle Stands & Shelter 10 stands / 20 spaces
 - Q50.220 B2 Linear Bench
 - Q10.3058 Circular Tree Grille in Hard paving
 - Q10.204 200mm High Upstand Steel Planter Edge
 - Q10.208 750mm High 6mm Thick Steel Wall with Screen Hedge Behind to Courtyard
 - B91.370 Timber Pergola Type A - Double 1.8m wide
 - B91.370 Timber Pergola Type B - Single 1.8m wide
 - B91.385 Ellipse Covered Shelter in Private Garden
- GROUP 2 FURNITURE**
- Q50.240 Litter Bins
 - Q50.320 Flag Pole
 - Parking bay with electric charging point

NOTES:
 DO NOT SCALE. Use figured dimensions only. The contractor is requested to check all dimensions before the work is put in hand. Copyright of this drawing belongs solely to Iteriad Ltd. This drawing must only be used for the purpose for which it is supplied and its contents must not be reproduced for any purpose without written permission. Areas indicated, or areas calculated from this drawing should be used for valuation purposes or as the basis for development contracts. Iteriad Ltd is a limited liability company registered in England and Wales. Number 7966573

NOTES:
 To be read in conjunction with Engineers & Architects information.
 Level thresholds to provided at all doorways.
 Refer to Engineers drawings for all road & car park levels & drainage.



P06	Updated to GDA latest layout	AP	KH	07.04.22
P05	Updated layout	AP	KH	22.12.21
P04	Amended to Eng. & Arch. latest layouts	AP	KH	19.08.21
P03	Updated to latest GDA & Curtins layout	AP	KH	17.04.21
P02	GDA updated layout (V7-P03) overlaid	AP	KH	20.05.21
P01	First Issue	AP	KH	22.03.21

REV	DETAILS	DRAWN BY	CHECKED BY	CHECKED DATE

CLIENT
North Cumbria Integrated Care NHS Foundation Trust

MASTERPLANNERS/LANDSCAPE ARCHITECTS
(iteriad)
 Studio
 2 Cringwood Cottages,
 Ecclestone,
 Windermere,
 Cumbria
 LA23 1JG
 T: (+44) 15394 43018
 E: studio@iteriad.com
 W: www.iteriad.com

PROJECT TITLE
West Cumberland Hospital Phases 2

DRAWING TITLE
SOUTH GENERAL ARRANGEMENT SHEET 4

SCALE DRAWN BY DATE
 1:200@A1 AP 09.02.21

PURPOSE STATUS
 For Approval S4

JOB/DRAWING NUMBER REVISION
 WCHPH2-ITR-00-XX-DR-L-0023 P06

