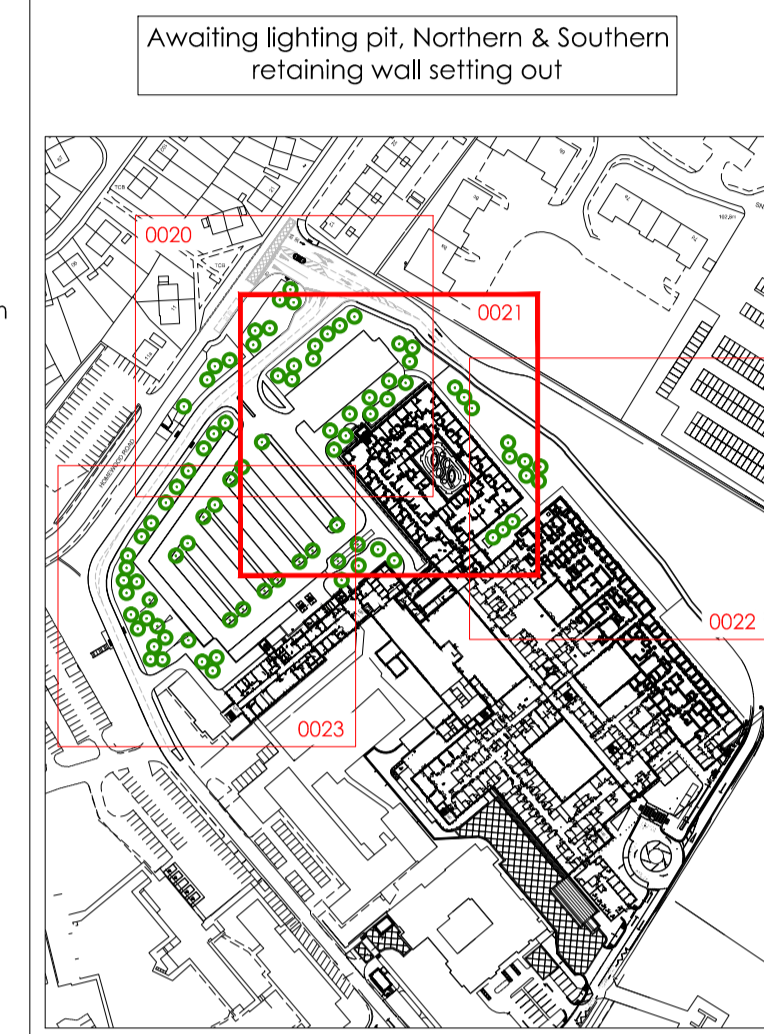




- KEY**
- Q22.107J Asphalt Vehicular Routes to engineers design & specification
 - Q24.119 Permeable Parking Bays to engineers design & specification
 - Q22.110A Black Macadam Footpaths / Pedestrian Routes to engineers design & specification
 - Q22.111 Buff Macadam Footpaths / Pedestrian Routes to engineers design & specification
 - Q22.111 Coloured Macadam Panel (Colour 2 T8C) to engineers design & specification
 - Q25.120A Timber Effect Concrete Paving
 - Q26.360A Rubber Surfacing to Courtyards & Gardens
 - Q23.175J White Decorative Loose Gravel, Pebbles & Cobbles with Planting Amongst
 - Q23.130J 500mm Maintenance Strip to Building Edge Self Binding Brendon Type Gravel/Crusher Run
 - Q41.211J Proposed Retaining Wall to Engineers Design (Indicative lines awaiting levels info)
 - Q30.400 Amenity Grass (seeded)
 - Q31 Low/Ground Cover Native & Ornamental Planting
 - Q31 Sensory Ornamental Planting to Arrival Space & Garden with Specimen Shrubs & Grasses
 - Q40.150J Screen Hedge with 1.2m Post & Wire Fence to Centerline
 - Q31 Native / Ornamental Trees
 - Q31 Small Ornamental Trees
 - Q31 Specimen Shrubs
 - Q41.110 Balustrade to top of Embankment & Retaining Walls (where shown)
 - Q41.130 Timber Knee Rail
 - Q41.140 Vehicle Impact Barrier to Footpath with High Trief Kerb Protection
 - Q40.125A Q40.360A 2.4m Security Weld-mesh Fencing & Gates
 - Q10.110J Road Kerb Droper Kerb & Dropped Kerb Flush Kerb (all to engineers details)
 - GROUP 1 FURNITURE**
 - Q50.190A Vehicle Impact Bollard Type A (fixed) Vehicle Impact Bollard Type B (removable)
 - B91.340 Q30.210 Cycle Stands & Shelter 10 stands / 20 spaces
 - Q50.220 B2 Linear Bench
 - Q10.305B Circular Tree Grille in Hard paving
 - Q10.206 200mm High Upstand Steel Planter Edge
 - Q10.208 750mm High 6mm Thick Steel Wall with Screen Hedge Behind to Courtyard
 - B91.370 Timber Pergola Type A - Double 1.8m wide
 - B91.370 Timber Pergola Type B - Single 1.8m wide
 - B91.385 Ellipse Covered Shelter in Private Garden
 - GROUP 2 FURNITURE**
 - Q50.240 Litter Bins
 - Q50.320 Flag Pole nom 8m
 - Parking bay with electric charging point
 - GENERAL**
 - + 91.19 Proposed Spot Level
 - Section Lines See Drawings WCHPH2-ITR-00-XX-DR-L-0030 to 0032
 - DRAINAGE & LIGHTING**
 - Standard Manhole Cover Recessed Manhole Cover
 - Standard Inspection Cover Recessed Inspection Cover
 - Gully to engineers details Linear Drain to engineers details
 - Lamp Column Location to M&E details Lighting Bollard Location to M&E details

NOTES:
 DO NOT SCALE. Use figured dimensions only. The contractor is requested to check all dimensions before the work is put in hand. Copyright of this drawing belongs solely to Iteriad Ltd. This drawing must only be used for the purpose for which it is supplied and its contents must not be reproduced for any purpose without written permission. Areas indicated, or areas calculated from this drawing should be used for valuation purposes or as the basis for development contracts. Iteriad Ltd is a limited liability company registered in England and Wales. Number 7966573

NOTES:
 To be read in conjunction with Engineers & Architects information.
 Level thresholds to provided at all doorways.
 Refer to Engineers drawings for all road & car park levels & drainage.



C01	First issue for construction approval	AP	KH	27.06.22
REV	DETAILS	DRAWN BY	CHECKED BY	CHECKED DATE

CLIENT
North Cumbria Integrated Care NHS Foundation Trust

MASTERPLANNERS/LANDSCAPE ARCHITECTS
(iteriad)
 Studio 2, Cringwood Cottages, Escrick, Wetherby, West Yorkshire, LS23 7UG
 T: (+44) 15394 43018
 E: studio@iteriad.com
 W: www.iteriad.com

PROJECT TITLE
West Cumberland Hospital Phase 2

DRAWING TITLE
NORTH GENERAL ARRANGEMENT SHEET 2

SCALE 1:200@A1 DRAWN BY AP DATE 27.06.22

PURPOSE For Construction Approval STATUS S4

JOB/DRAWING NUMBER WCHPH2-ITR-00-XX-DR-L-0021 REVISION C01

