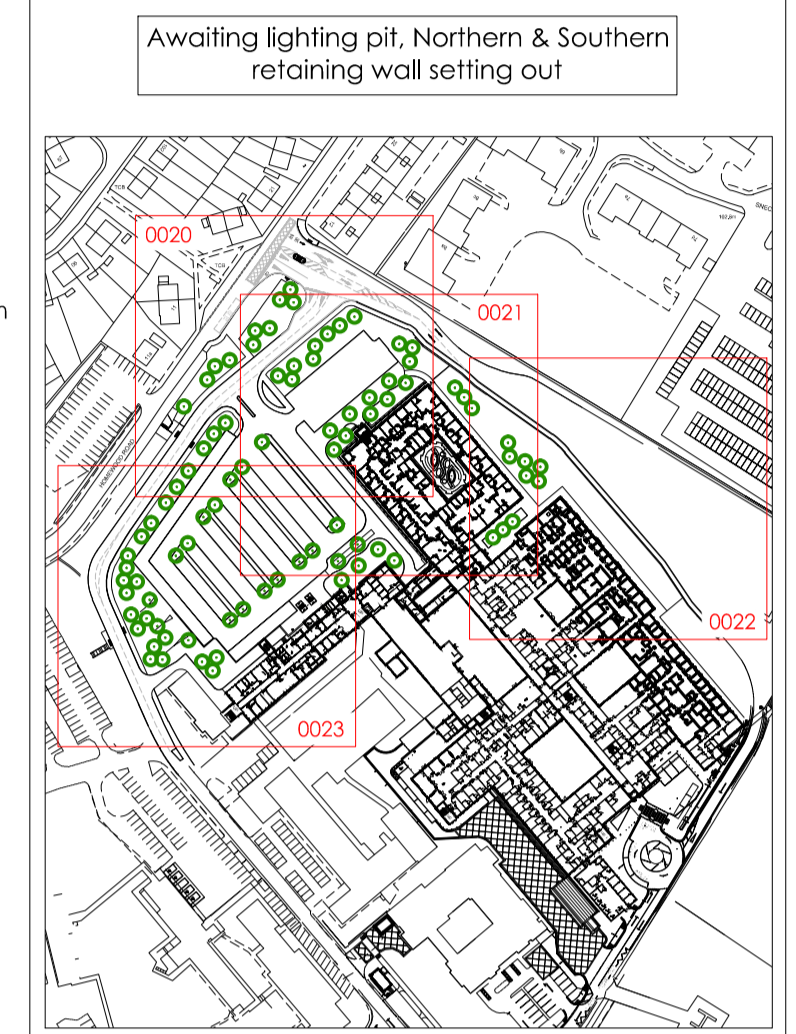


- KEY**
- Q22.107J Asphalt Vehicular Routes to engineers design & specification
  - Q24.119 Permeable Parking Bays to engineers design & specification
  - Q22.110A Black Macadam Footpaths / Pedestrian Routes to engineers design & specification
  - Q22.111 Buff Macadam Footpaths / Pedestrian Routes to engineers design & specification
  - Q22.111 Coloured Macadam Panel (Colour 2 T8C) to engineers design & specification
  - Q25.120A Timber Effect Concrete Paving
  - Q26.360A Rubber Surfacing to Courtyards & Gardens
  - Q23.175J White Decorative Loose Gravel, Pebbles & Cobbles with Planting Amongst
  - Q23.130J 500mm Maintenance Strip to Building Edge Self Binding Breedon Type Gravel/Crusher Run
  - Proposed Retaining Wall to Engineers Design See Engineers drawings for layout & type
  - Q30.400 Amenity Grass (seeded)
  - Q31 Low/Ground Cover Native & Ornamental Planting
  - Q31 Sensory Ornamental Planting to Arrival Space & Garden with Specimen Shrubs & Grasses
  - Q31 Screen Hedge with 1.2m Post & Wire Fence to Centerline
  - Q31 Existing Trees Retained
  - Q31 Native / Ornamental Trees
  - Q31 Small Ornamental Trees
  - Q31 Specimen Shrubs
  - Q41.110 Balustrade to top of Embankment & Retaining Walls (where shown)
  - Q41.130 Timber Knee Roll
  - Q41.140 Vehicle Impact Barrier to Footpath with High Trief Kerb Protection
  - Q40.125A Q40.560A 2.4m Security Weld-mesh Fencing & Gates
  - Q10.110J Road Kerb  
Droper Kerb & Drapped Kerb  
Flush Kerb (all to engineers details)
  - GROUP 1 FURNITURE**
  - Q50.190A Vehicle Impact Bollard Type A (fixed)  
Vehicle Impact Bollard Type B (removable)
  - B91.340 Q50.210 Cycle Stands & Shelter  
10 stands / 20 spaces
  - Q50.220 B2 Linear Bench
  - Q10.305B Circular Tree Grille in Hard paving
  - Q10.206 200mm High Upstand Steel Planter Edge
  - Q10.208 750mm High 4mm Thick Steel Wall with Screen Hedge Behind to Courtyard
  - B91.370 Timber Pergola Type A - Double 1.8m wide
  - B91.370 Timber Pergola Type B - Single 1.8m wide
  - B91.385 Ellipse Covered Shelter in Private Garden
  - GROUP 2 FURNITURE**
  - Q50.240 Litter Bins
  - Q50.320 Flag Pole nom 8m
  - Parking bay with electric charging point
  - GENERAL**
  - + 91.19 Proposed Spot Level
  - 1L Section Lines See Drawings WCHPH2-ITR-00-XX-DR-L-0030 to 0032
  - DRAINAGE & LIGHTING**
  - Standard Manhole Cover  
Recessed Manhole Cover
  - Standard Inspection Cover  
Recessed Inspection Cover
  - Gully  
Linear Drain
  - Lamp Column Location  
Lighting Bollard Location

**NOTES:**  
DO NOT SCALE. Use figured dimensions only. The contractor is requested to check all dimensions before the work is put in hand. Copyright of this drawing belongs solely to Iteriad Ltd. This drawing must only be used for the purpose for which it is supplied and its contents must not be reproduced for any purpose without written permission. Areas indicated, or areas calculated from this drawing should be used for valuation purposes or as the basis for development contracts. Iteriad Ltd is a limited liability company registered in England and Wales. Number 7966573

**NOTES:**  
To be read in conjunction with Engineers & Architects information.  
Level thresholds to provided at all doorways.  
Refer to Engineers drawings for all road & car park levels & drainage.



C01	First issue for construction approval	AP	KH	27.06.22
REV	DETAILS	DRAWN BY	CHECKED BY	CHECKED DATE

CLIENT  
**North Cumbria Integrated Care NHS Foundation Trust**

MASTERPLANNERS/LANDSCAPE ARCHITECTS  
**(iteriad)**  
Studio  
2 Cragwood Cottages,  
Eccleflatts,  
Windermere,  
Cumbria  
LA23 1JG  
T: (+44) 15394 43018  
E: studio@iteriad.com  
W: www.iteriad.com

PROJECT TITLE  
**West Cumberland Hospital Phase 2**

DRAWING TITLE  
**OVERALL LANDSCAPE SITE PLAN WITH TOPOGRAPHIC OVERLAY**

SCALE	DRAWN BY	DATE
1:500@A1	AP	27.06.22
PURPOSE	STATUS	
For Construction Approval	S4	
JOB/DRAWING NUMBER	REVISION	
WCHPH2-ITR-00-XX-DR-L-0003	C01	