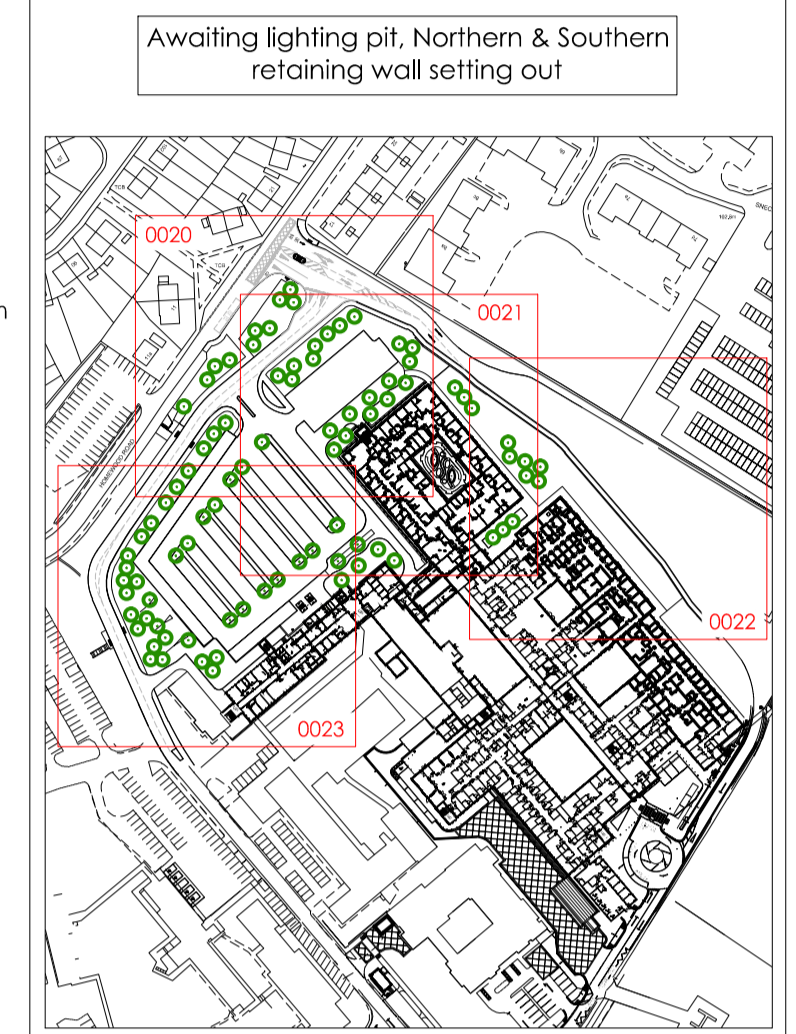




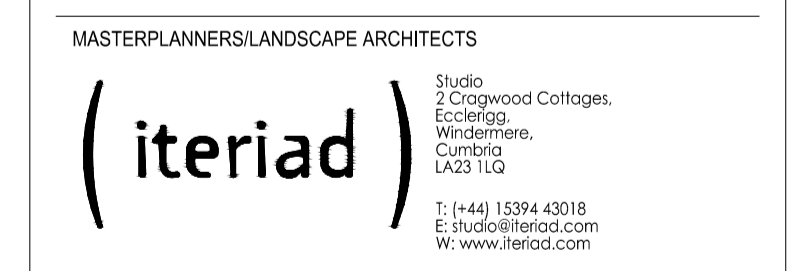
NOTES:
 DO NOT SCALE. Use figured dimensions only. The contractor is requested to check all dimensions before the work is put in hand. Copyright of this drawing belongs solely to Iteriad Ltd. This drawing must only be used for the purpose for which it is supplied and its contents must not be reproduced for any purpose without written permission. Areas indicated, or areas calculated from this drawing should be used for valuation purposes or as the basis for development contracts. Iteriad Ltd is a limited liability company registered in England and Wales. Number 7966573

NOTES:
 To be read in conjunction with Engineers & Architects information.
 Level thresholds to provided at all doorways.
 Refer to Engineers drawings for all road & car park levels & drainage.



C01	First issue for construction approval	AP	KH	27.06.22
REV	DETAILS	DRAWN BY	CHECKED BY	CHECKED DATE

CLIENT
North Cumbria Integrated Care NHS Foundation Trust



PROJECT TITLE
West Cumberland Hospital Phase 2

DRAWING TITLE
OVERALL LANDSCAPE SITE PLAN

SCALE	DRAWN BY	DATE
1:500@A1	AP	27.06.22
PURPOSE	STATUS	
For Construction Approval	S4	
JOB/DRAWING NUMBER	REVISION	
WCHPH2-TR-00-XX-DR-L-0001	C01	

