



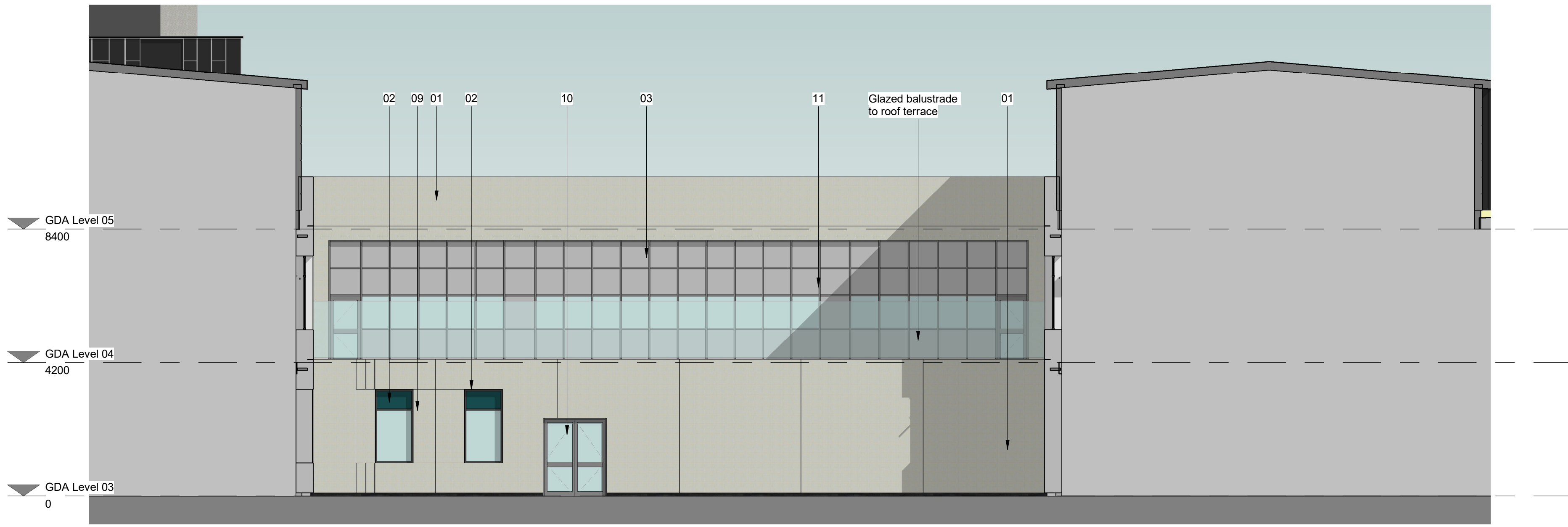
① Elevation C1
1 : 100



② Elevation C2
1 : 100



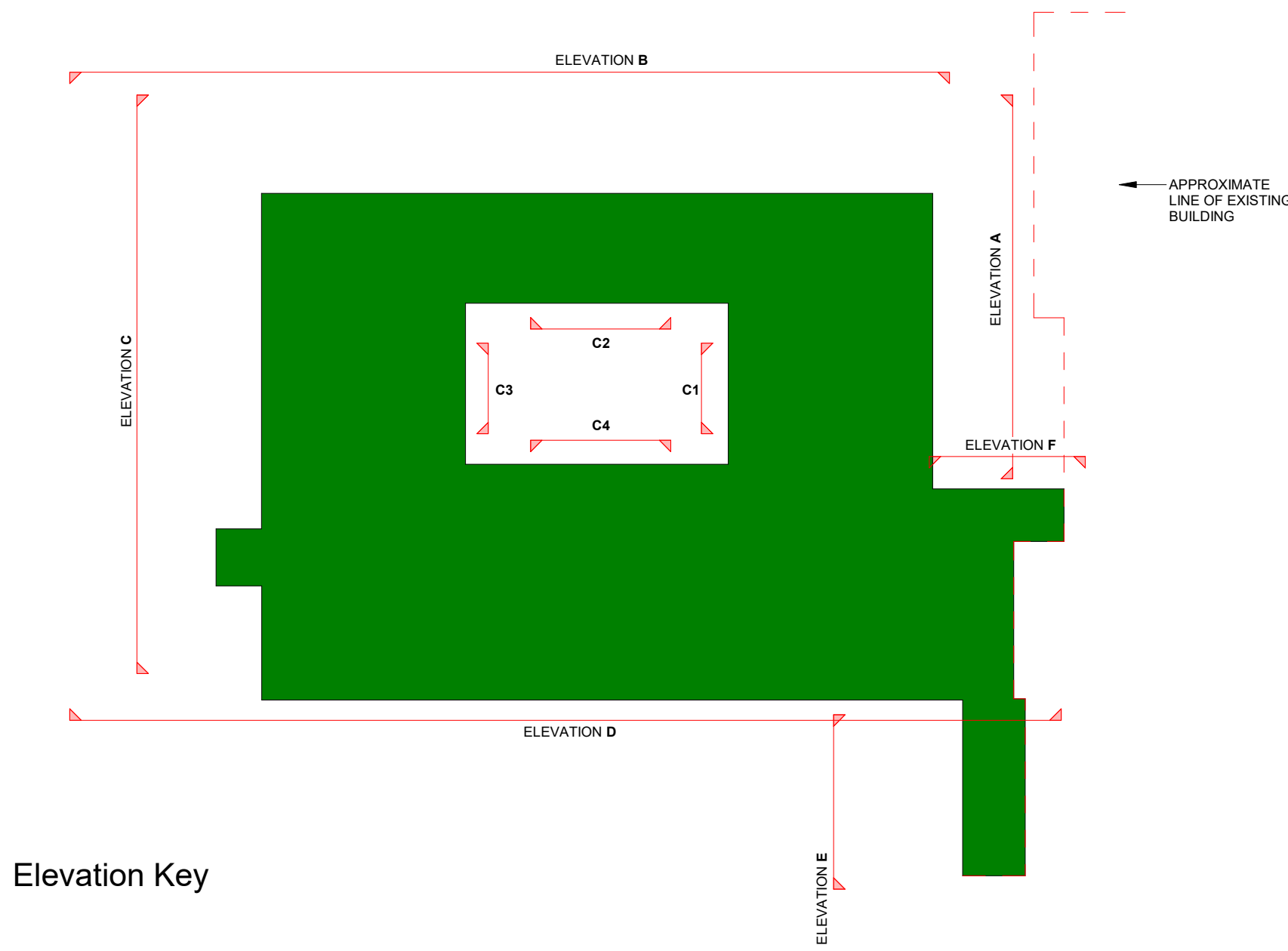
③ Elevation C3
1 : 100



④ Elevation C4
1 : 100

Materials Legend

- 01. Concrete panel - Colour TBC
- 02. PFC aluminium framed windows
- 03. Aluminium framed curtain walling
- 04. Opaque panel - Colour to match Phase 1 (existing building)
- 05. Metal cladding panels (Euroclad) - RAL9004
- 06. Aluminium cladding panels
- 07. Aluminium louvre panels
- 08. Steel framed translucent canopy
- 09. Recessed concrete panel - Colour TBC
- 10. Glazed aluminium door - colour to match windows
- 11. Glazed frosted panel to curtain walling
- 12. Clear Glazed panel to curtain walling
- 13. Brick cladding - TBC



THIS DRAWING (OR ANY PART THEREOF) MAY NOT BE COPIED, TRANSMITTED OR DISCLOSED TO ANY THIRD PARTY OR UNAUTHORISED PERSON WITHOUT THE PRIOR WRITTEN PERMISSION OF GILLING DOD ARCHITECTS.

THIS DRAWING IS TO BE READ IN CONJUNCTION WITH ALL OTHER RELEVANT DRAWINGS PREPARED BY CONSULTANTS AND SUB-CONTRACTORS.

REPORT ANY DISCREPANCIES TO THE ARCHITECT OR REPRESENTATIVES THEREOF.

© ALL RIGHTS RESERVED. NO PART OF THIS DRAWING MAY BE REPRODUCED OR TRANSMITTED IN ANY FORM OR BY ANY MEANS WITHOUT THE WRITTEN PERMISSIONS OF THE COPYRIGHT HOLDER

ONCE PRINTED AND DISTRIBUTED THIS DOCUMENT IS ASSUMED UNCONTROLLED

DO NOT SCALE FROM THIS DRAWING. WORK ONLY TO PRINTED DIMENSIONS.

SCALE 1: 100

P02	IW	Issued for Planning	18/06/21
P01	IW	Updated inline with design development	27/05/21
Rev	By	Description	Date



The Cruck Barn, Duxbury Park, Chorley, Lancashire. PR7 4AT
t: 01257 260070 f: 01257 260071

Client Name:
North Cumbria Integrated Care NHS Foundation Trust

Site Name:
West Cumberland Hospital

Project Name:
Whitehaven - Phase 2 Development

Drawing Title:
Proposed Elevations - Sheet 3 of 3

Project No:	Sheet Size:	Scale:	
8060p	A0	As indicated	
Drawn by:	Checked by:	Approved by:	Revision:
IW	AG	SK	P02
Suitability:		Status:	
Suitable for Planning		S2	
Drawing Number: Project Code / Discipline / Volume / Level / Type / Discipline / System Number WCHPH2-GDA-V7-ZZ-DR-A-99004			