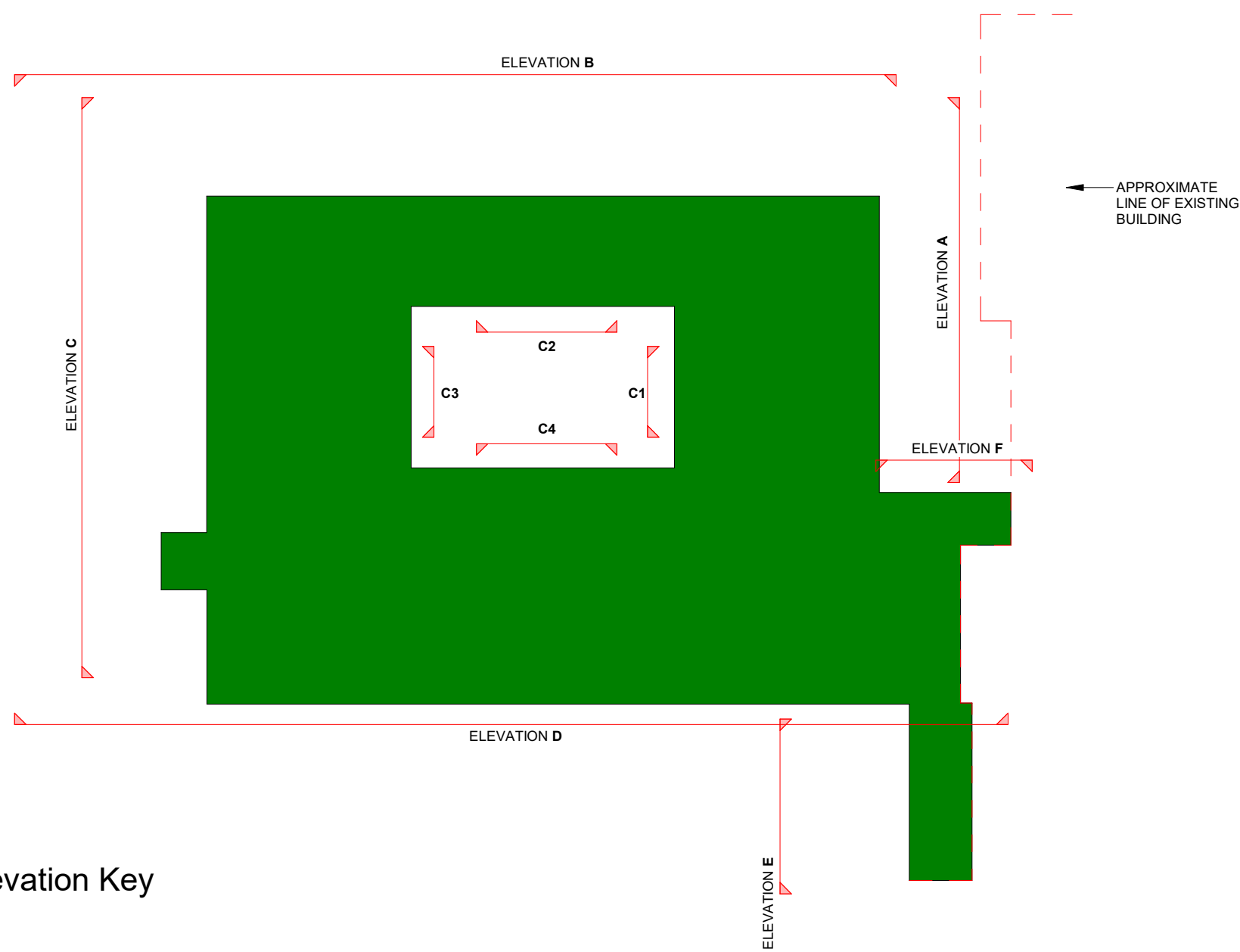


Materials Legend

01. Concrete panel - Colour TBC  
02. PPC aluminium framed windows  
03. Aluminium framed curtain walling  
04. Opaque panel - Colour to match Phase 1 (existing building)  
05. Metal cladding panels (Euroclad) - RAL2004  
06. Aluminium cladding panels  
07. Aluminium louvre panels  
08. Steel framed translucent canopy  
09. Recessed concrete panel - Colour TBC  
10. Glazed aluminium door - colour to match windows  
11. Glazed frosted panel to curtain walling  
12. Clear Glazed panel to curtain walling  
13. Brick cladding - TBC



THIS DRAWING (OR ANY PART THEREOF) MAY NOT BE COPIED, TRANSMITTED OR DISCLOSED TO ANY THIRD PARTY OR UNAUTHORISED PERSON WITHOUT THE PRIOR WRITTEN PERMISSION OF GILLING DOD ARCHITECTS.

THIS DRAWING IS TO BE READ IN CONJUNCTION WITH ALL OTHER RELEVANT DRAWINGS PREPARED BY CONSULTANTS AND SUB-CONTRACTORS.

REPORT ANY DISCREPANCIES TO THE ARCHITECT OR REPRESENTATIVES THEREOF.

© ALL RIGHTS RESERVED. NO PART OF THIS DRAWING MAY BE REPRODUCED OR TRANSMITTED IN ANY FORM OR BY ANY MEANS WITHOUT THE WRITTEN PERMISSIONS OF THE COPYRIGHT HOLDER

ONCE PRINTED AND DISTRIBUTED THIS DOCUMENT IS ASSUMED UNCONTROLLED

DO NOT SCALE FROM THIS DRAWING. WORK ONLY TO PRINTED DIMENSIONS.

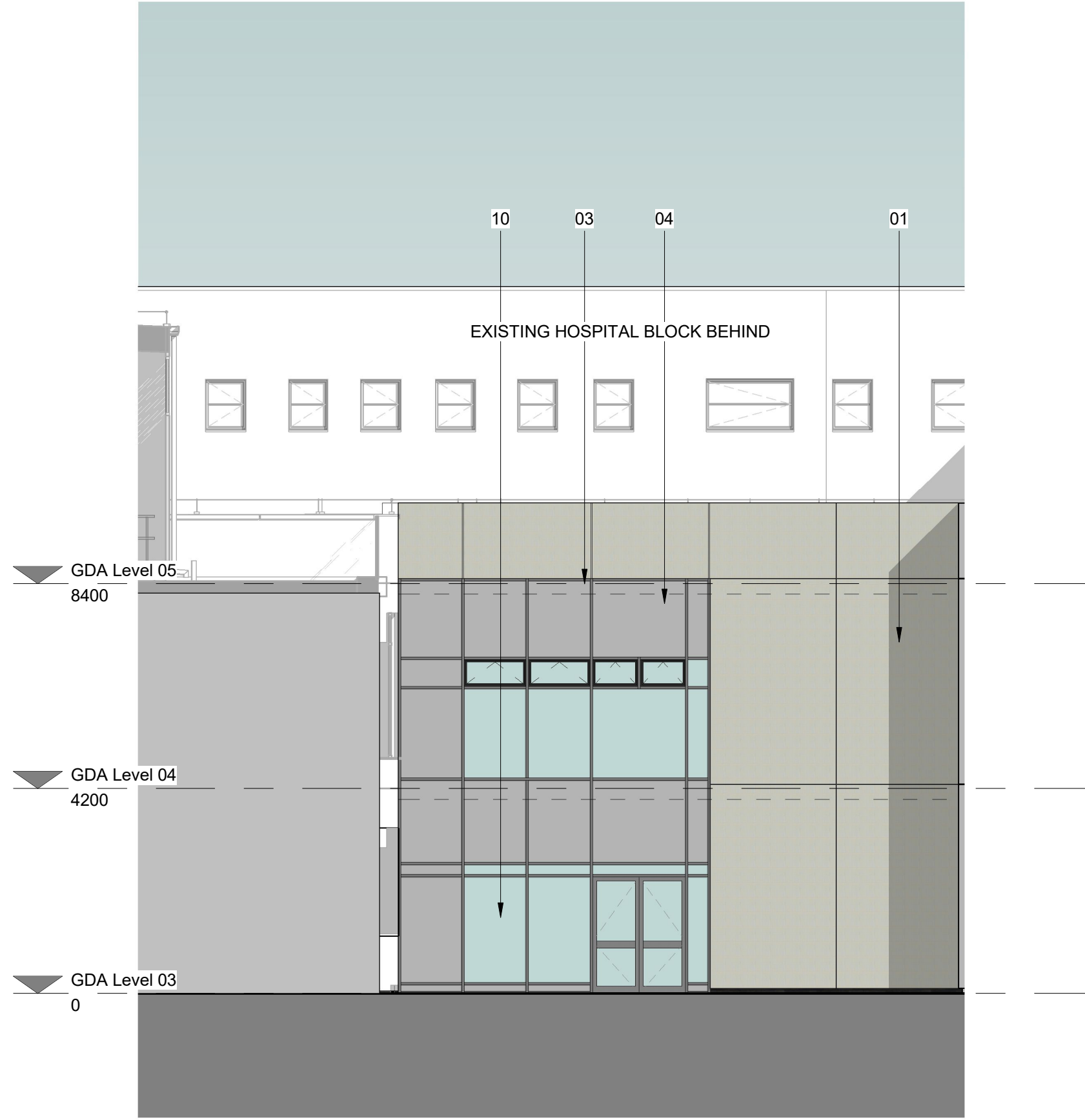
1 0 1 2 3 4 5  
SCALE 1: 100 m



4 Elevation D  
1 : 100



2 Elevation E  
1 : 100



3 Elevation F  
1 : 100

P02	IW	Issued for Planning	18/06/21
P01	IW	Updated inline with design development	27/05/21
Rev	By	Description	Date



Client Name:  
North Cumbria Integrated Care NHS Foundation Trust

Site Name:  
West Cumberland Hospital

Project Name:  
Whitehaven - Phase 2 Development

Drawing Title:  
Proposed Elevations - Sheet 2 of 3

Project No: 8060p	Sheet Size: A0	Scale: As indicated	Revision: P02
Drawn by: IW	Checked by: AG	Approved by: SK	Status: S2
Suitable for Planning			
Drawing Number: Project Code / Discipline / Volume / Level / Type / Discipline / System Number WCHPH2-GDA-V7-ZZ-DR-A-99003			