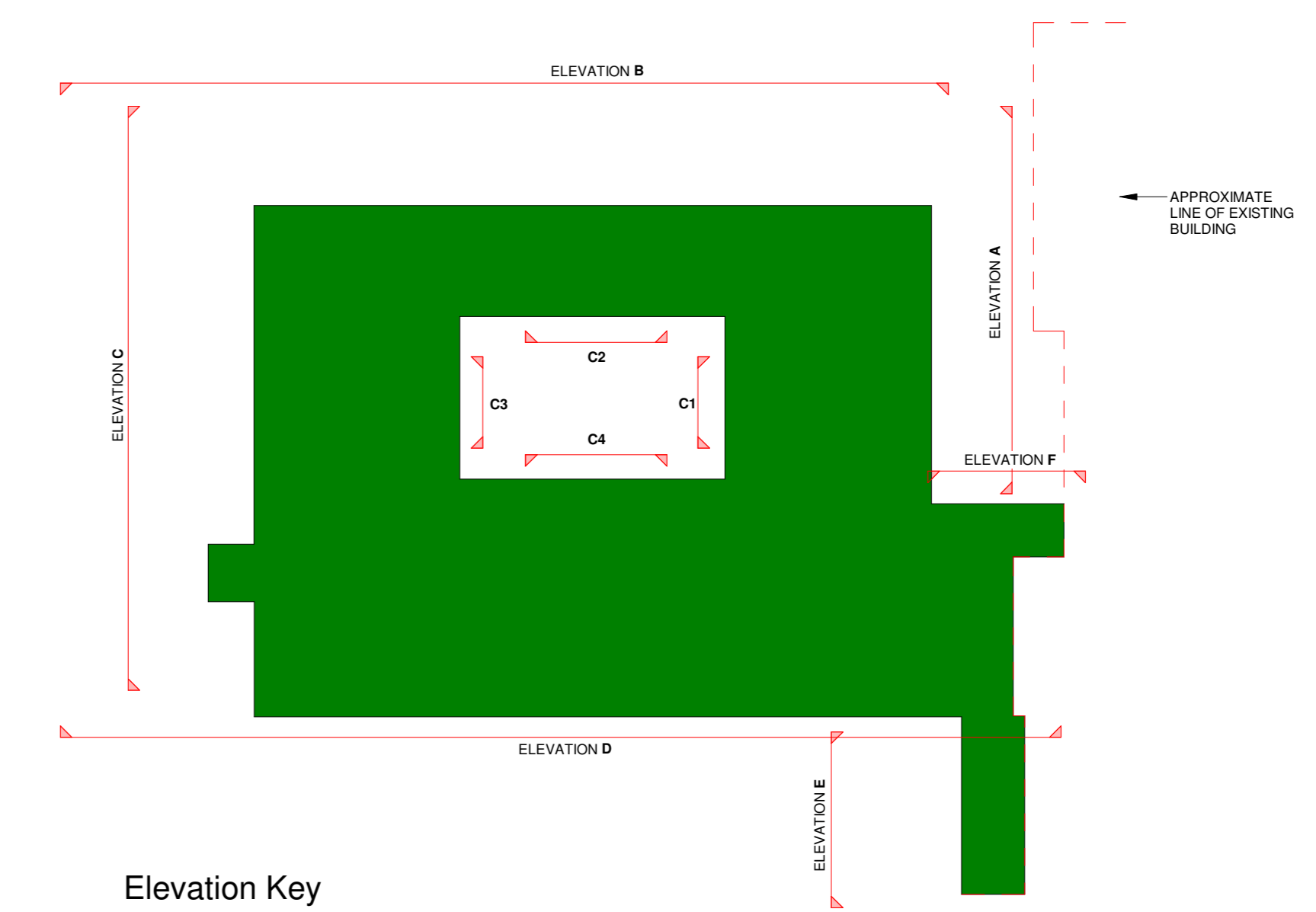




1 Elevation A
1 : 100

Materials Legend

- 01. Concrete panel - Colour TBC
- 02. PPC aluminium framed windows - RAL 7021
- 03. Aluminium framed curtain walling - RAL 7021
- 04. Opaque panel - Colour to match Phase 1 (existing building) (RAL 6027 & RAL 5024)
- 05. Metal cladding panels (Euroclad) - RAL 7016
- 06. Stairwell Concrete panels
- 07. Aluminium louvre panels - RAL 7021
- 08. Main Entrance Rainscreen cladding - RAL 5023
- 09. Recessed concrete panel - Colour TBC
- 10. Glazed aluminium door - colour to match windows
- 11. Glazed frosted panel to curtain walling
- 12. Clear Glazed panel to curtain walling
- 13. Brick cladding - TBC



2 Elevation B
1 : 100



3 Elevation C
1 : 100

THIS DRAWING (OR ANY PART THEREOF) MAY NOT BE COPIED, TRANSMITTED OR DISCLOSED TO ANY THIRD PARTY OR UNAUTHORISED PERSON WITHOUT THE PRIOR WRITTEN PERMISSION OF GILLING DOD ARCHITECTS.

THIS DRAWING IS TO BE READ IN CONJUNCTION WITH ALL OTHER RELEVANT DRAWINGS PREPARED BY CONSULTANTS AND SUB-CONTRACTORS.

REPORT ANY DISCREPANCIES TO THE ARCHITECT OR REPRESENTATIVES THEREOF.

© ALL RIGHTS RESERVED. NO PART OF THIS DRAWING MAY BE REPRODUCED OR TRANSMITTED IN ANY FORM OR BY ANY MEANS WITHOUT THE WRITTEN PERMISSIONS OF THE COPYRIGHT HOLDER.

ONCE PRINTED AND DISTRIBUTED THIS DOCUMENT IS ASSUMED UNCONTROLLED.

DO NOT SCALE FROM THIS DRAWING. WORK ONLY TO PRINTED DIMENSIONS.

1 0 1 2 3 4 5
SCALE 1: 100 m

P03	EA	Update Planning Issue - Conditions Discharge Application	22/04/22
P02	IW	Issued for Planning	18/06/21
P01	IW	Updated time with design development	27/05/21
Rev	By	Description	Date



Client Name:
North Cumbria Integrated Care NHS Foundation Trust

Site Name:
West Cumberland Hospital

Project Name:
Whitehaven - Phase 2 Development

Drawing Title:
Proposed Elevations - Sheet 1 of 3

Project No: 8060p	Sheet Size: A0	Scale: As indicated
Drawn by: IW	Checked by: AJG	Approved by: SK
Suitability: Suitable for Planning	Revision: P03	Status: S4
Drawing Number: Project Code / Discipline / Volume / Level / Type / Discipline / System Number WCHPH2-GDA-V7-ZZ-DR-A-99002		