

THIS DRAWING (OR ANY PART THEREOF) MAY NOT BE COPIED, TRANSMITTED OR DISCLOSED TO ANY THIRD PARTY OR UNAUTHORISED PERSON WITHOUT THE PRIOR WRITTEN PERMISSION OF GILLING DOD ARCHITECTS.

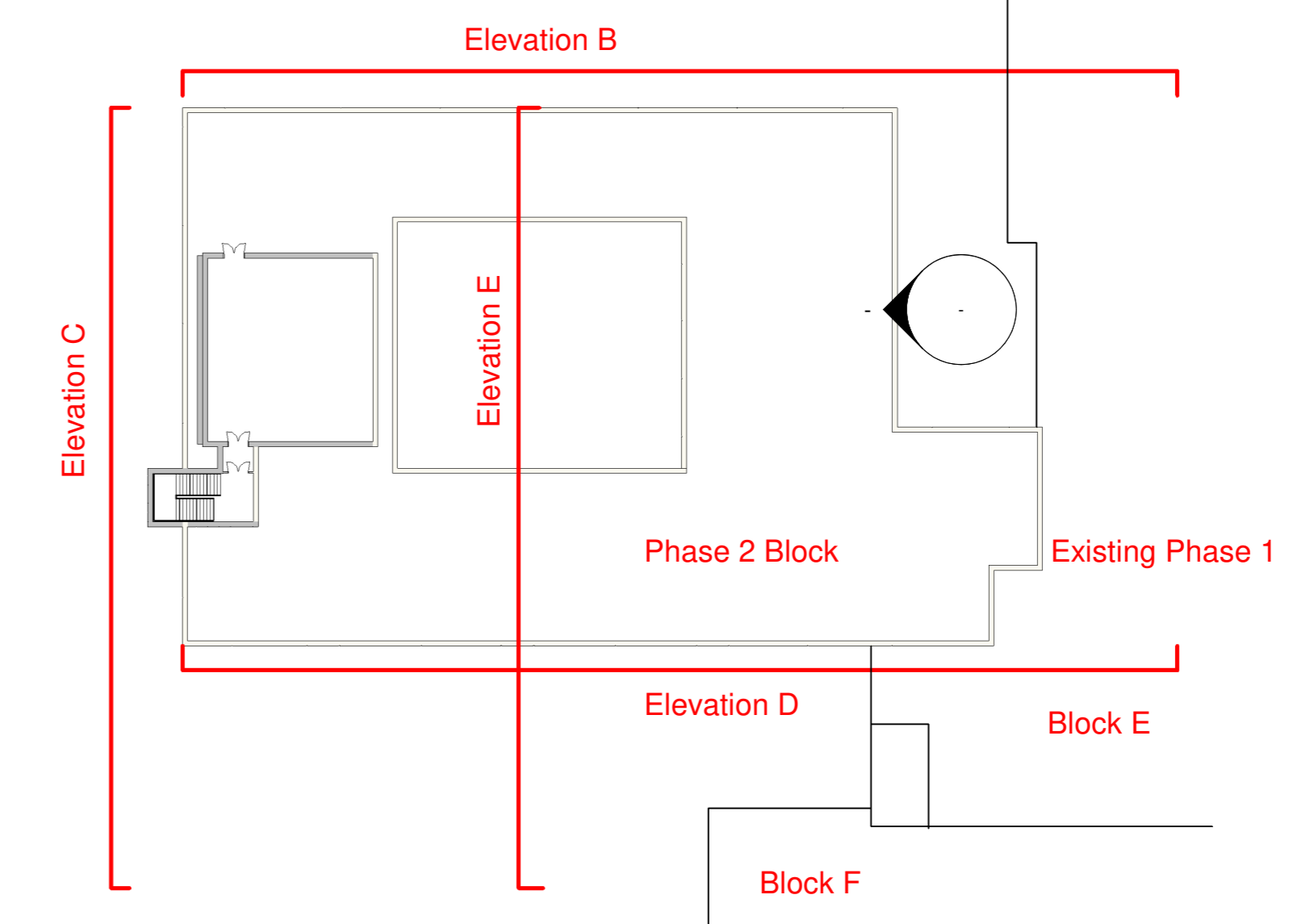
THIS DRAWING IS TO BE READ IN CONJUNCTION WITH ALL OTHER RELEVANT DRAWINGS PREPARED BY CONSULTANTS AND SUB-CONTRACTORS.

DO NOT SCALE FROM THIS DRAWING. WORK ONLY TO PRINTED DIMENSIONS.

REPORT ANY DISCREPANCIES TO THE ARCHITECT OR REPRESENTATIVES THEREOF.

© ALL RIGHTS RESERVED. NO PART OF THIS DRAWING MAY BE REPRODUCED OR TRANSMITTED IN ANY FORM OR BY ANY MEANS WITHOUT THE WRITTEN PERMISSIONS OF THE COPYRIGHT HOLDER.

ONCE PRINTED AND DISTRIBUTED THIS DOCUMENT IS ASSUMED UNCONTROLLED



REFERENCE PLAN



4 Elevation D
1 : 100



3 Elevation E
1 : 100

PO3	BW	Issued for Outline Planning	23/07/20
PO2	BW	Issued for Comment	20/09/20
PO1	PS	First Issue	11/09/20

Rev	By	Description	Date



Client
North Cumbria University Hospitals NHS Trust

Project
West Cumberland Hospital, Whitehaven - Phase 2

Title
Phase 2 Block
Inpatient Ward Accommodation
Proposed Elevations Sheet 2 of 2

Drawing Status
Outline Planning

Project Number	Drawn By	Checked By	Approved
8060k	BW	AG	SK

Scale	Sheet Size	Suitability	Revision
As indicated	A0	S2	P03

Drawing Number
WCH-GDA-V7-ZZ-DR-A-05_20-0007

Drawing issued for illustrative purposes only