

WETLAND SPECIFICATION TABLE

FEATURE NUMBER	UPSTREAM STARTING COORDINATE (OSGB)	LENGTH OF FEATURE (M)	AVERAGE WIDTH OF FEATURE (M)	AVERAGE CUT (m)
1	300616.027,519272.268	33.8	11.4	- 0.4 to -0.6
2	300567.680,519109.313	19.0	3.5	- 0.4 to -0.6
3	300555.873,519073.994	32.8	6.0	- 0.4 to -0.6
4	300544.219,519042.594	15.5	2.5	- 0.4 to -0.6
5	300513.073,519004.832	33.6	27.4	- 0.4 to -0.6
6	300477.297,518986.053	28.6	9.1	- 0.4 to -0.6
7	300579.334,518755.819	76.9	5.1	- 0.4 to -0.6
8	300678.624,518734.038	12.0	3.2	- 0.4 to -0.6
9	300691.449,518711.340	27.5	3.7	- 0.4 to -0.6
10	300792.774,518673.578	54.8	17.3	- 0.4 to -0.6

GRADE UPSTREAM AND DOWNSTREAM FEATURE SLOPES TO EXISTING FLOODPLAIN OR FEATURE (REFER TO FEATURE TABLE)

EXCAVATE TO DEPTH PROPOSED IN FEATURE TABLE TO CREATE WETLAND. REFER TO FEATURE COORDINATES AND MAP FOR FEATURE SHAPES

GRADE UPSTREAM AND DOWNSTREAM FEATURE SLOPES TO EXISTING FLOODPLAIN OR FEATURE (REFER TO FEATURE TABLE)

slope varies
30-50 (deg)

slope varies
30-50 (deg)

width varies

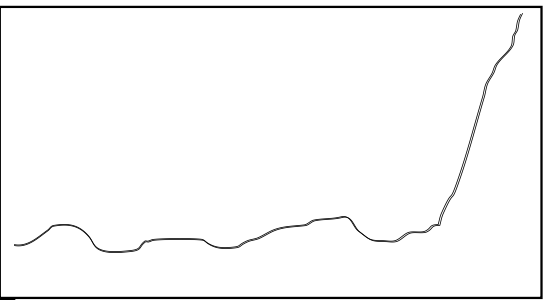


EXCAVATE TO DEPTH PROPOSED IN FEATURE TABLE TO CREATE WETLAND. REFER TO FEATURE COORDINATES AND MAP FOR FEATURE SHAPES

slope varies
70-90 (deg)

slope varies
70-90 (deg)

width varies



VARY FINISHED HEIGHT +/- 200mm TO CREATE LOCAL VARIATION AND LEAVE ROUGH SURFACE



B-B' WETLAND CROSS SECTION



Dynamic Rivers
(Survey and
Design) Ltd



Convention
Centre, Skiddaw
St, Keswick CA12
4BY

REVISION	DATE
1	17/11

LEGEND:
Features

NOTES:

ALL EXCAVATION DEPTHS ARE GIVEN IN m (METRES BELOW GROUND LEVEL)

PROPOSED LEVELS MAY VARY +/- 100 mm TO GENERATE BED AND FEATURE VARIATION

CHAINAGE MEASUREMENTS ARE IN METERS

ALL ARISINGS TO BE STOCKPILED FOR DISPOSAL OFF SITE OR LOCAL SPREADING OUTSIDE OF THE FLOODPLAIN

REFER TO FEATURE BOUNDARY COORDINATES "DR-2022-0108- Walkmills_Coordinates" FOR EXACT INDIVIDUAL FEATURE SHAPES

PROJECT TITLE:
Walkmills Restoration

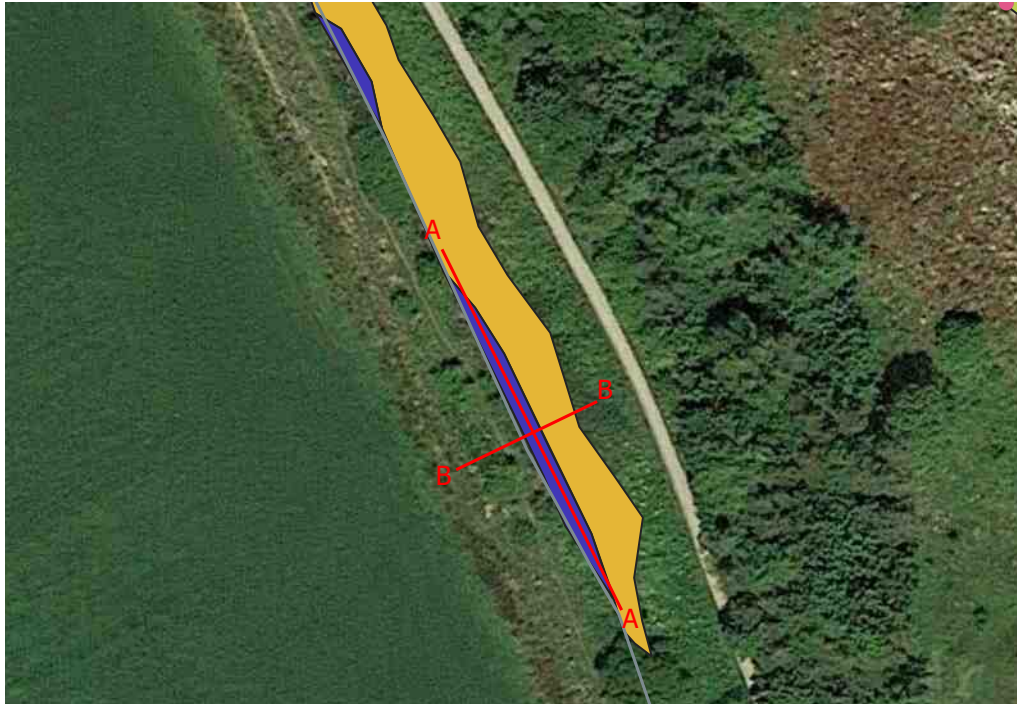
PROJECT NUMBER:
DR-2022-0108

SHEET TITLE:
WETLAND SECTION

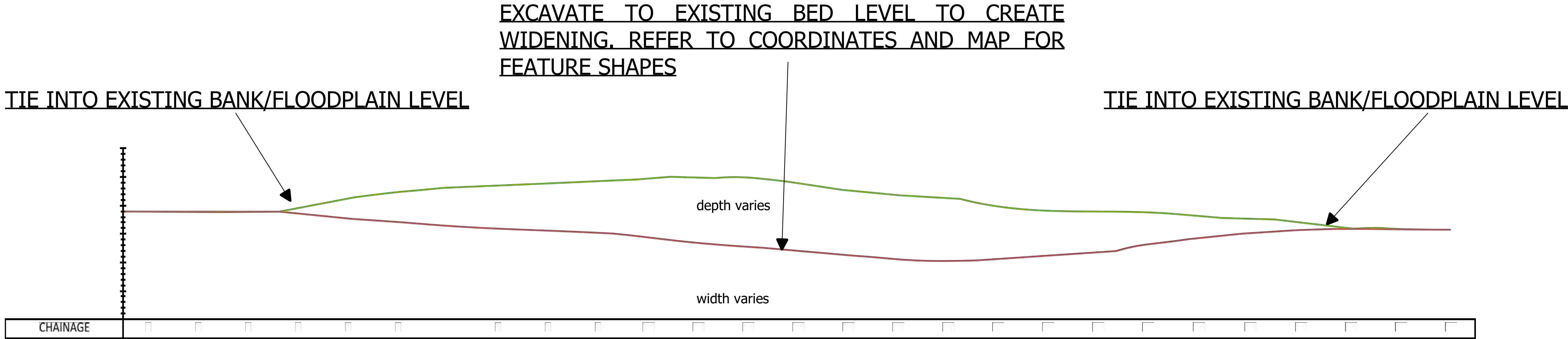
AUTHORS:
Author: RW & ZW
Checked: SB
Approved: GH

SCALE:
MAP
SCALE AT
A1

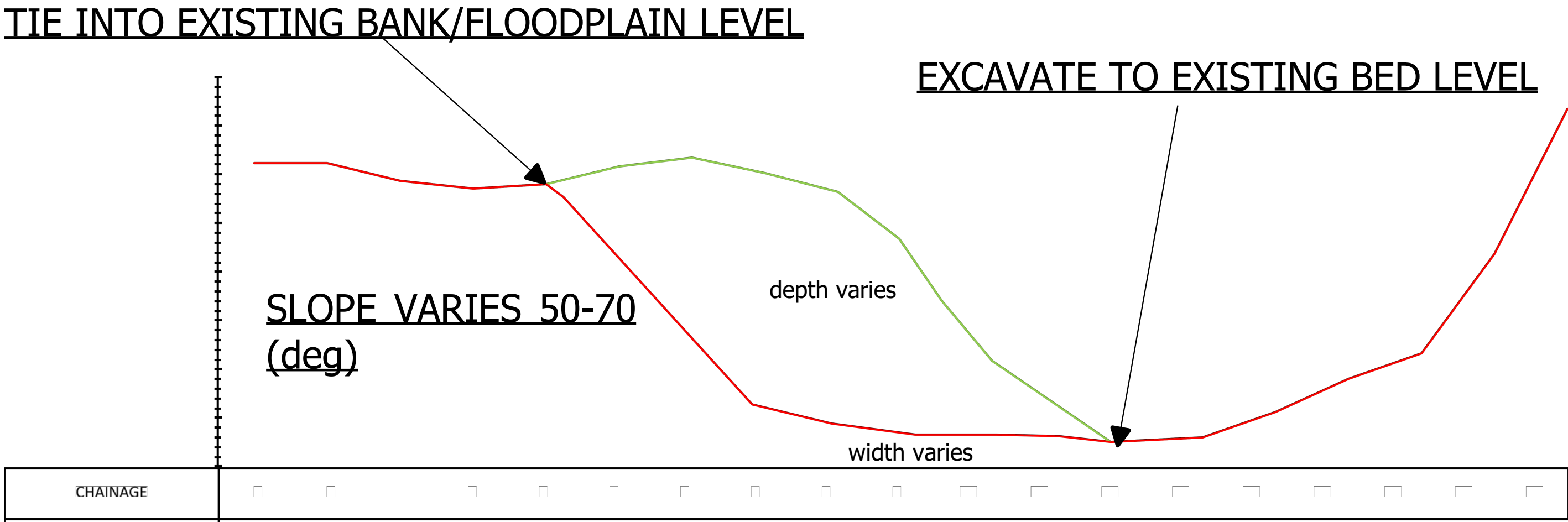
SHEET:
4



WIDENING SPECIFICATION TABLE				
FEATURE NUMBER	UPSTREAM STARTING COORDINATE (OSGB)	LENGTH OF FEATURE (M)	MAX WIDTH OF FEATURE (M)	EXCAVATE LEVEL
1	300561.719,518783.523	13.2	1.5	EXCAVATE TO LOCAL CHANNEL LEVEL
2	300574.385,518757.919	37.0	2.0	EXCAVATE TO LOCAL CHANNEL LEVEL



A-A' WIDENING LONG SECTION



B-B' WIDENING CROSS SECTION



Dynamic Rivers
(Survey and
Design) Ltd



Convention
Centre, Skiddaw
St, Keswick CA12
4BY

REVISION	DATE
1	17/11

LEGEND:
Features

NOTES:

ALL EXCAVATION DEPTHS ARE GIVEN IN m (METRES BELOW GROUND LEVEL)

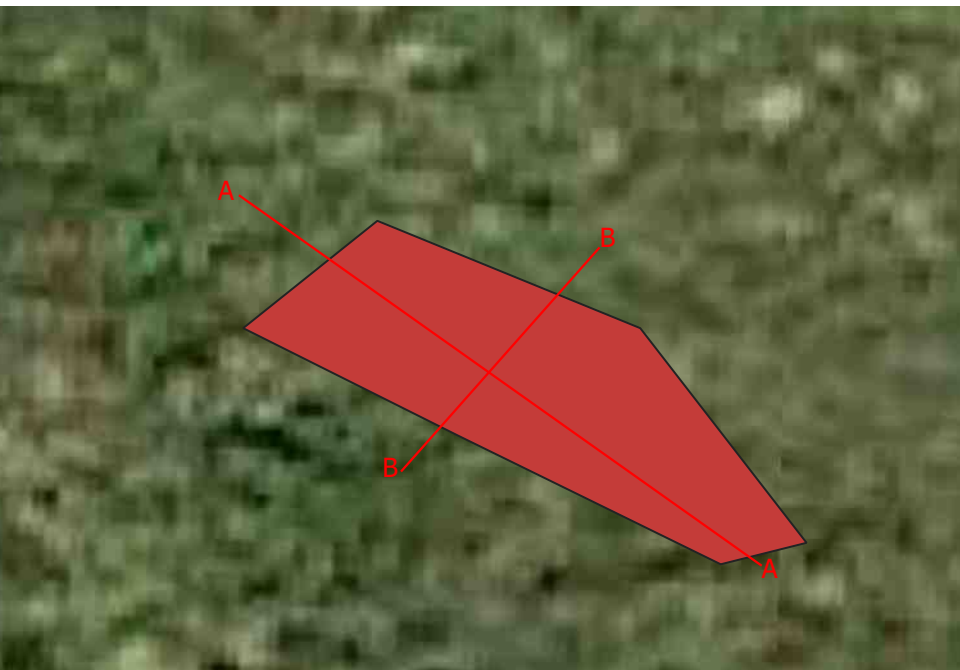
PROPOSED LEVELS MAY VARY +/- 100 mm TO GENERATE BED AND FEATURE VARIATION

CHAINAGE MEASUREMENTS ARE IN METERS

ALL ARISING TO BE STOCKPILED FOR DISPOSAL OFF SITE OR LOCAL SPREADING OUTSIDE OF THE FLOODPLAIN

REFER TO FEATURE BOUNDARY COORDINATES "DR-2022-0108- Walkmills_Coordinates" FOR EXACT INDIVIDUAL FEATURE SHAPES

PROJECT TITLE: Walkmills Restoration	
PROJECT NUMBER: DR-2022-0108	
SHEET TITLE: WIDENING SECTIONS	
AUTHORS: Author: RW Checked: SB Approved: GH	
SCALE: MAP SCALE AT A1	SHEET: 5



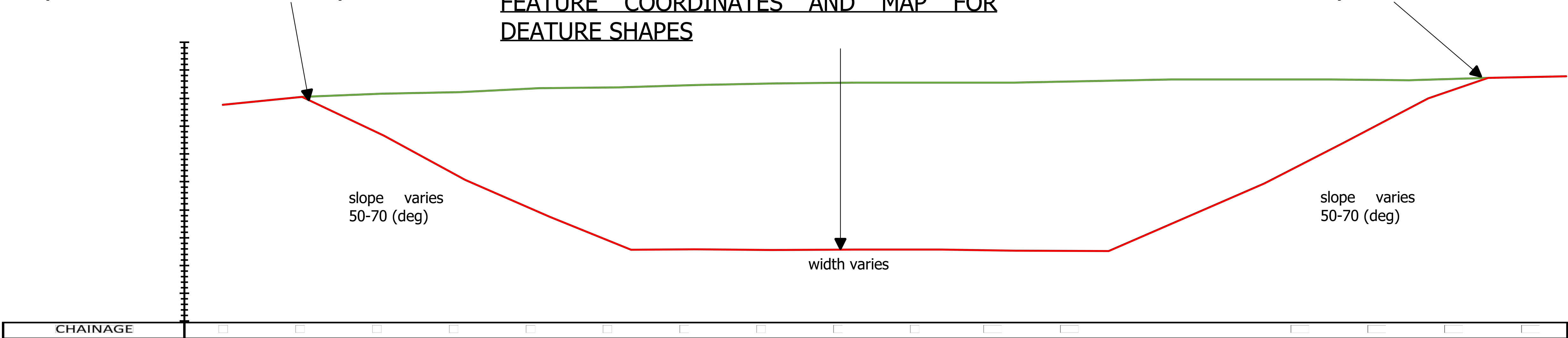
SEEPAGE POND SPECIFICATION TABLE

FEATURE NUMBER	UPSTREAM STARTING COORDINATE (OSGB)	LENGTH OF FEATURE (M)	AVERAGE WIDTH OF FEATURE (M)	AVERAGE CUT (m)
1	300672.749,518774.868	7.0	2.3	- 0.4 to -0.6
2	300647.812,518763.977	30.7	2.2	- 0.6 to -1.0
3	300654.835,518748.099	12.9	2.1	- 0.6 to -1.0

GRADE SLOPES TO EXISTING FLOODPLAIN LEVEL OR CONNECTING FEATURE (REFER TO FEATURE TABLE)

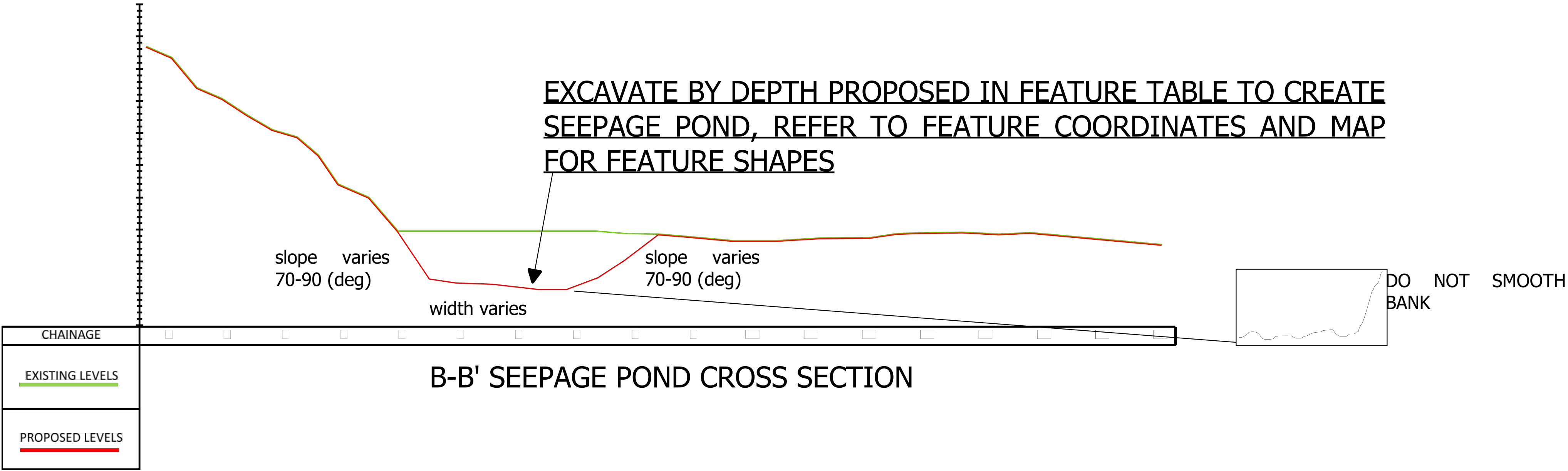
EXCAVATE BY DEPTH PROPOSED IN FEATURE TABLE TO CREATE SEEPAGE POND, REFER TO FEATURE COORDINATES AND MAP FOR DEATURE SHAPES

GRADE SLOPES TO EXISTING FLOODPLAIN LEVEL OR CONNECTING FEATURE (REFER TO FEATURE TABLE)



A-A' SEEPAGE POND LONG SECTION

EXCAVATE BY DEPTH PROPOSED IN FEATURE TABLE TO CREATE SEEPAGE POND, REFER TO FEATURE COORDINATES AND MAP FOR FEATURE SHAPES



B-B' SEEPAGE POND CROSS SECTION



Dynamic Rivers
(Survey and
Design) Ltd



Convention
Centre, Skiddaw
St, Keswick CA12
4BY

REVISION	DATE
1	17/11

LEGEND:
Features

NOTES:

ALL EXCAVATION DEPTHS ARE GIVEN IN m (METRES BELOW GROUND LEVEL)

PROPOSED LEVELS MAY VARY +/- 100 mm TO GENERATE BED AND FEATURE VARIATION

CHAINAGE MEASUREMENTS ARE IN METERS

ALL ARISINGS TO BE STOCKPILED FOR DISPOSAL OFF SITE OR LOCAL SPREADING OUTSIDE OF THE FLOODPLAIN

REFER TO FEATURE BOUNDARY COORDINATES "DR-2022-0108- Walkmills_Coordinates" FOR EXACT INDIVIDUAL FEATURE SHAPES

PROJECT TITLE:

Walkmills Restoration

PROJECT NUMBER:

DR-2022-0108

SHEET TITLE:

POND SECTIONS

AUTHORS:

Author: RW & ZW

Checked: SB

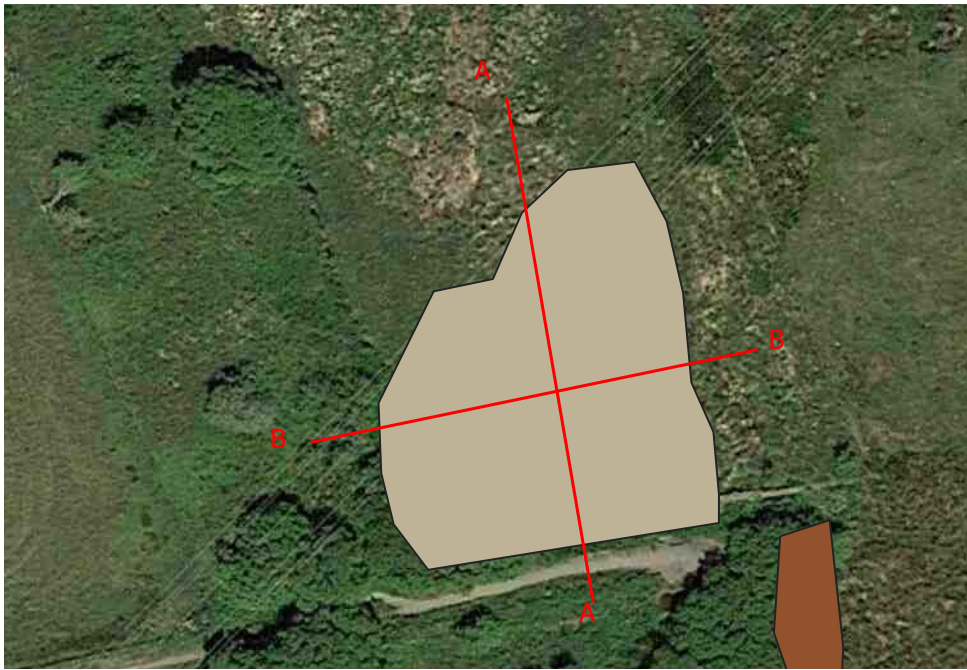
Approved: GH

SCALE:

MAP
SCALE AT
A1

SHEET:

6



ONLINE POND SPECIFICATION TABLE

FEATURE NUMBER	UPSTREAM STARTING COORDINATE (OSGB)	LENGTH OF FEATURE (m)	AVERAGE WIDTH OF FEATURE (m)	AVERAGE CUT (m)
1	300607.681,519517.413	39.3	35.2	-1.0 to -2.0
2	300626.002,519262.547	63.5	15.4	-1.0 to -2.0
3	300901.631,519014.400	30.8	8.3	-1.0 to -2.0
4	300858.678,518905.085	46.2	10.9	-1.0 to -2.0
5	300633.432,518793.734	17.1	18.2	-1.0 to -2.0
6	300690.838,518672.001	8.4	27.8	-1.0 to -2.0

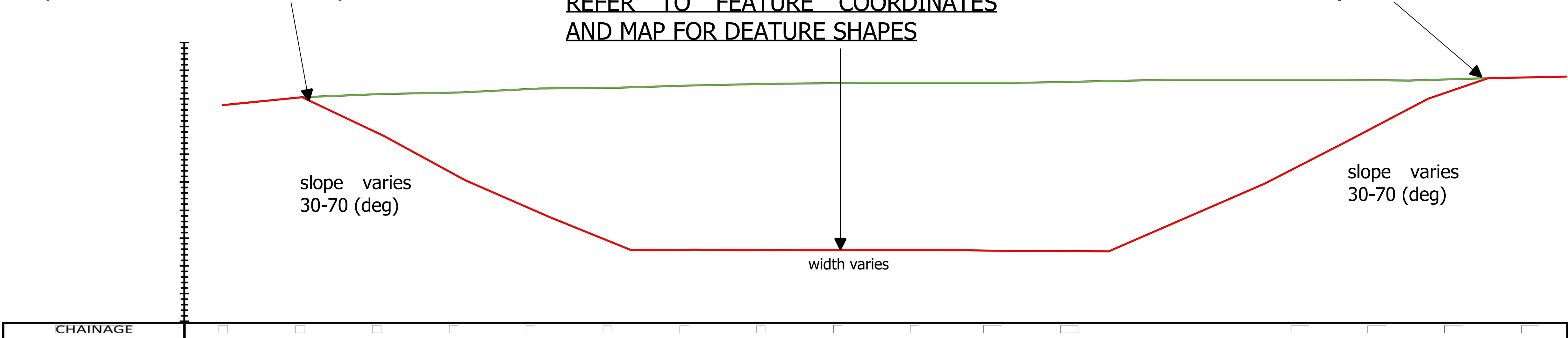
OFFLINE POND SPECIFICATION TABLE

FEATURE NUMBER	UPSTREAM STARTING COORDINATE (OSGB)	LENGTH OF FEATURE (M)	AVERAGE WIDTH OF FEATURE (M)	AVERAGE CUT (m)
2	300609.742,519443.107	35.0	6.3	-0.4 to -0.6
3	300642.110,519420.511	23.4	6.5	-0.4 to -0.6
4	300562.413,519421.631	17.1	5.3	-0.4 to -0.6
5	300516.611,519416.440	21.48	5.2	-0.4 to -0.6
6	300486.178,519398.322	25.4	16.6	-0.4 to -0.6
7	300667.861,519383.869	36.4	6.9	-0.4 to -0.6
8	300502.157,519353.131	18.1	10.4	-0.4 to -0.6
9	300579.309,519352.825	15.5	6.0	-0.4 to -0.6
10	300657.733,519317.914	32.2	3.2	-0.4 to -0.6
11	300543.278,519277.302	21.5	4.9	-0.4 to -0.6
12	300397.219,519243.307	79.3	15.5	-0.4 to -0.6
13	300628.776,519210.532	16.9	2.4	-0.4 to -0.6
14	300751.323,518972.563	10.4	10.6	-0.4 to -0.6
15	300747.659,518949.764	15.9	14.8	-0.4 to -0.6
16	300734.223,518931.850	15.8	16.5	-0.4 to -0.6
17	300677.835,518741.515	12.3	3.7	-0.4 to -0.6

GRADE SLOPES TO EXISTING FLOODPLAIN LEVEL OR CONNECTING FEATURE (REFER TO FEATURE TABLE)

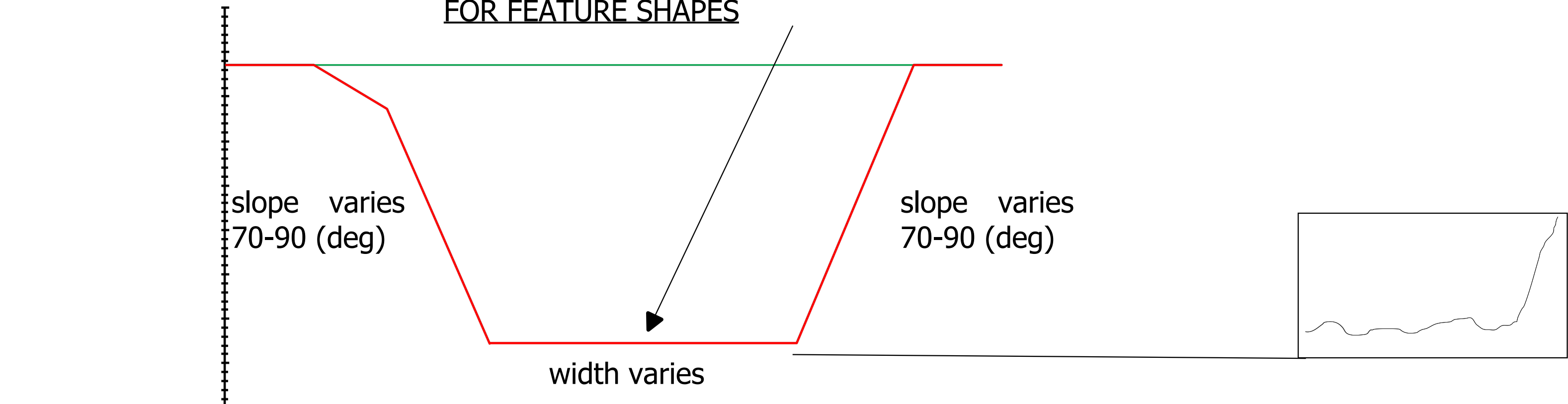
EXCAVATE BY DEPTH PROPOSED IN FEATURE TABLE TO CREATE POND, REFER TO FEATURE COORDINATES AND MAP FOR DEATURE SHAPES

GRADE SLOPES TO EXISTING FLOODPLAIN LEVEL OR CONNECTING FEATURE (REFER TO FEATURE TABLE)



A-A' POND LONG SECTION

EXCAVATE TO DEPTH PROPOSED IN FEATURE TABLE TO CREATE POND. REFER TO FEATURE COORDINATES AND MAP FOR FEATURE SHAPES



B-B' POND CROSS SECTION

VARY FINISHED HEIGHT +/- 200mm TO CREATE LOCAL VARIATION AND LEAVE ROUGH SURFACE



Dynamic Rivers
(Survey and
Design) Ltd



Convention
Centre, Skiddaw
St, Keswick CA12
4BY

REVISION	DATE
1	17/11

LEGEND:
Features

NOTES:

ALL EXCAVATION DEPTHS ARE GIVEN IN m (METRES BELOW GROUND LEVEL)

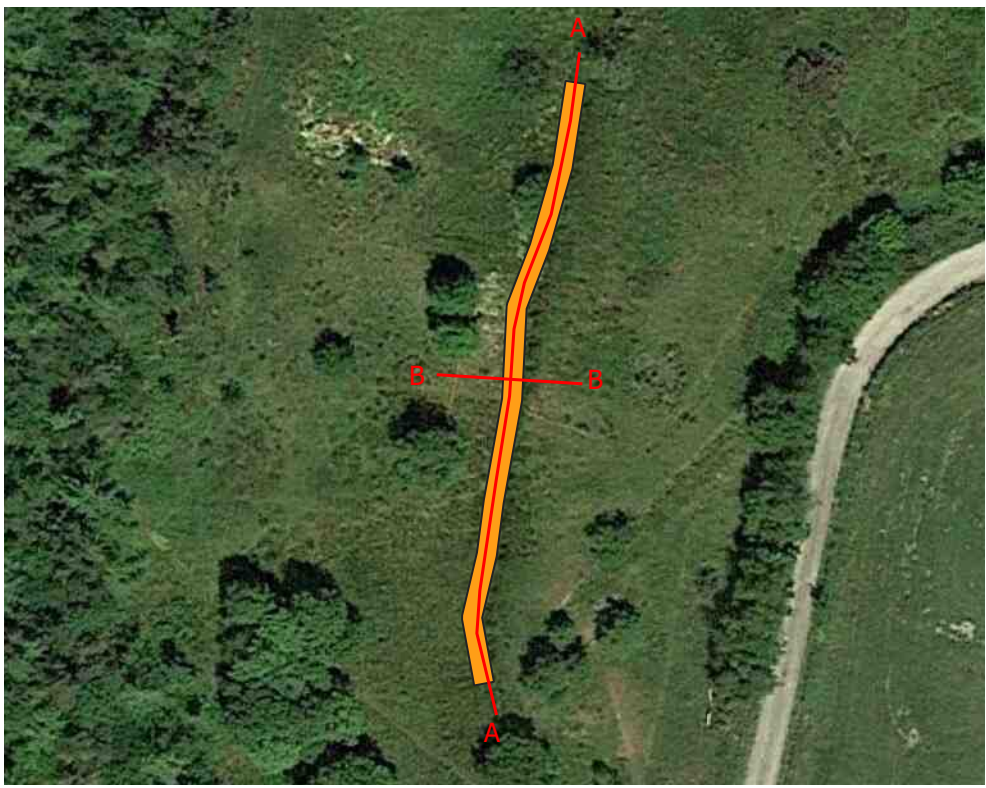
PROPOSED LEVELS MAY VARY +/- 100 mm TO GENERATE BED AND FEATURE VARIATION

CHAINAGE MEASUREMENTS ARE IN METERS

ALL ARISINGS TO BE STOCKPILED FOR DISPOSAL OFF SITE OR LOCAL SPREADING OUTSIDE OF THE FLOODPLAIN

REFER TO FEATURE BOUNDARY COORDINATES "DR-2022-0108- Walkmills_Coordinates" FOR EXACT INDIVIDUAL FEATURE SHAPES.

PROJECT TITLE: Walkmills Restoration	
PROJECT NUMBER: DR-2022-0108	
SHEET TITLE: POND SECTIONS	
AUTHORS: Author: RW & ZW Checked: SB Approved: GH	
SCALE: MAP SCALE AT A1	SHEET: 7

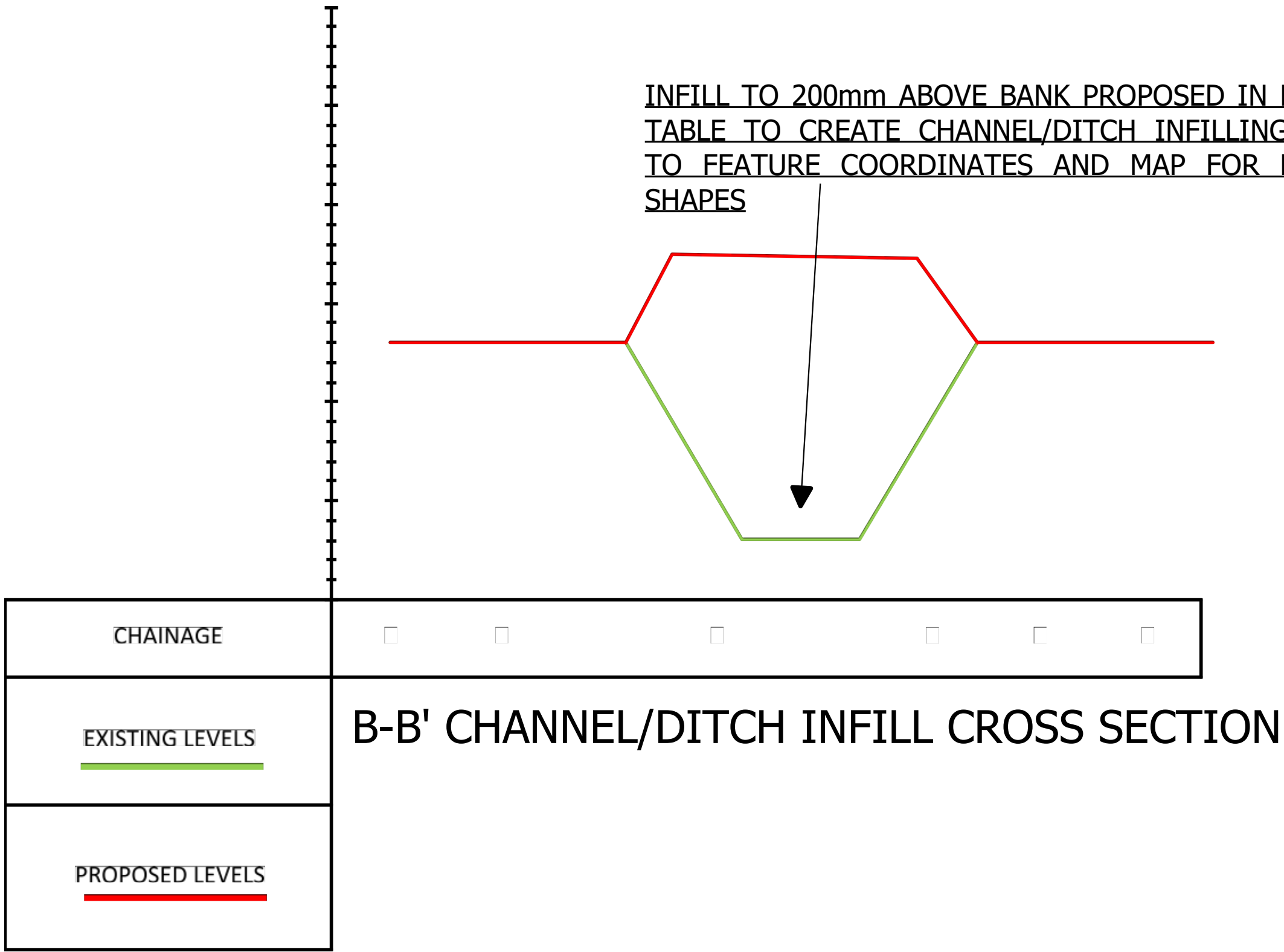
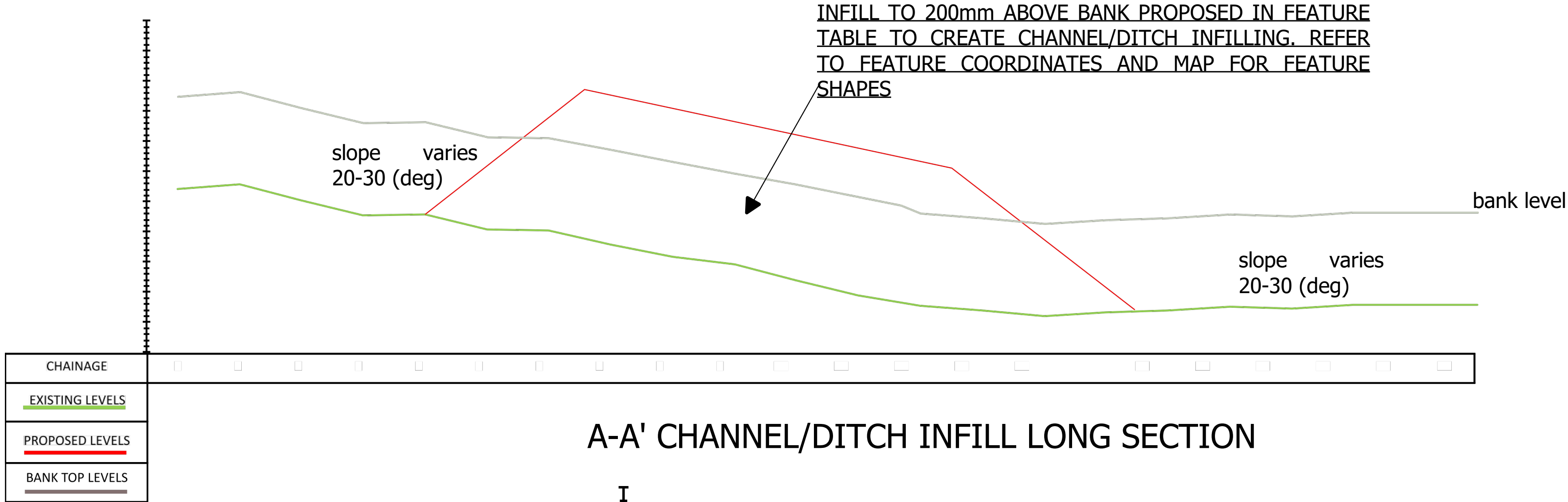


CHANNEL INFILL/BLOCK SPECIFICATION TABLE

FEATURE NUMBER	UPSTREAM STARTING COORDINATE (OSGB)	LENGTH OF FEATURE (m)	MAX WIDTH OF FEATURE (m)	INFILL LEVEL
1	300894.290,519000.06	7	54.8	FULL CHANNEL WIDTH
2	300852.559,518884.77	2	46.6	FULL CHANNEL WIDTH
3	300836.184,518829.96	2	59.9	FULL CHANNEL WIDTH

DITCH INFILL/BLOCK SPECIFICATION TABLE

FEATURE NUMBER	UPSTREAM STARTING COORDINATE (OSGB)	LENGTH OF FEATURE (m)	MAX WIDTH OF FEATURE (m)	INFILL LEVEL
1	300335.430,519379.52	2	15.6	FULL CHANNEL WIDTH
2	300404.744,519380.74	3	13.9	FULL CHANNEL WIDTH
3	300504.492,519348.30	0	25.2	FULL CHANNEL WIDTH
4	300382.072,519225.47	3	23.9	FULL CHANNEL WIDTH
5	300492.151,519232.38	1	28.2	FULL CHANNEL WIDTH
6	300587.000,519236.73	3	25.8	FULL CHANNEL WIDTH



Dynamic Rivers
(Survey and
Design) Ltd



Convention
Centre, Skiddaw
St, Keswick CA12
4BY

REVISION	DATE
1	17/11

LEGEND:
Features

NOTES:

ALL EXCAVATION DEPTHS ARE GIVEN IN m (METRES BELOW GROUND LEVEL)

PROPOSED LEVELS MAY VARY +/- 100 mm TO GENERATE BED AND FEATURE VARIATION

CHAINAGE MEASUREMENTS ARE IN METERS

ALL ARISINGS TO BE STOCKPILED FOR DISPOSAL OFF SITE OR LOCAL SPREADING OUTSIDE OF THE FLOODPLAIN

REFER TO FEATURE BOUNDARY COORDINATES "DR-2022-0108- Walkmills_Coordinates" FOR EXACT INDIVIDUAL FEATURE SHAPES

PROJECT TITLE:

Walkmills Restoration

PROJECT NUMBER:

DR-2022-0108

SHEET TITLE:

INFILL SECTIONS

AUTHORS:

Author: RW & ZW

Checked: SB

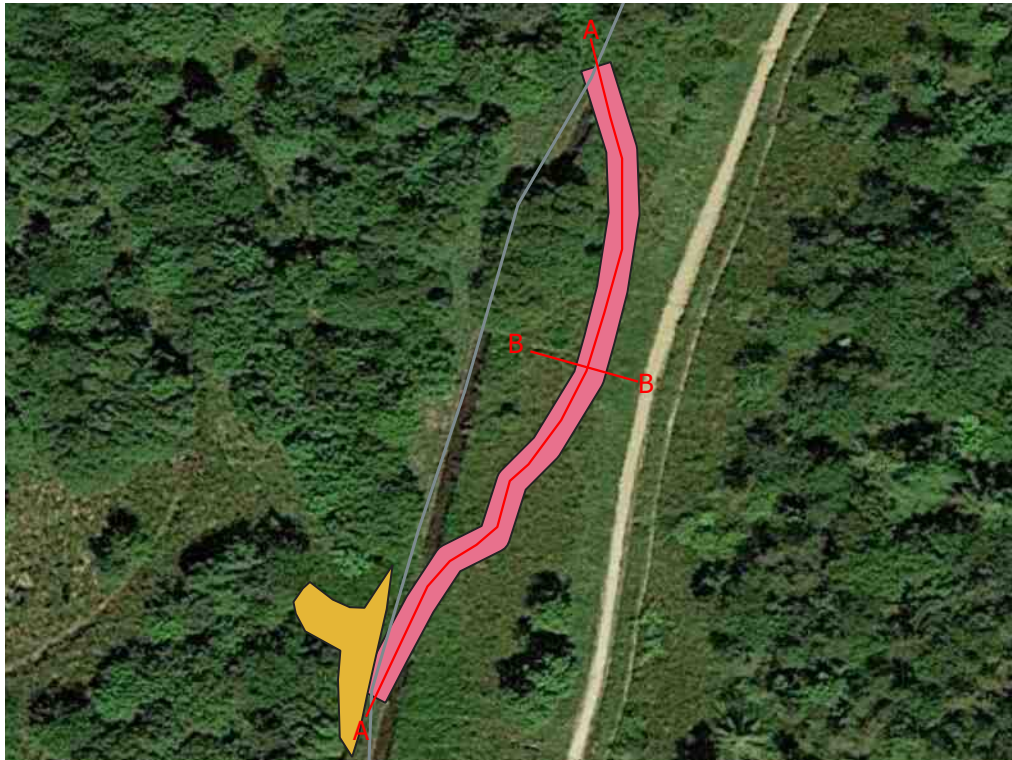
Approved: GH

SCALE:

MAP
SCALE AT
A1

SHEET:

8



DITCH CUT SPECIFICATION TABLE

FEATURE NUMBER	UPSTREAM STARTING COORDINATE (OSGB)	LENGTH OF FEATURE (m)	MAX WIDTH OF FEATURE (m)	MAX UST LEVEL	MAX DST LEVEL
1	300360.984,519387.397	20.3	5.0	TIE INTO EXISTING BED LEVEL	TIE INTO EXISTING BED LEVEL
2	300417.657,519387.062	20.9	3.8	TIE INTO EXISTING BED LEVEL	TIE INTO EXISTING BED LEVEL
3	300573.996,519241.164	24.6	5.9	TIE INTO EXISTING BED LEVEL	TIE INTO EXISTING BED LEVEL
4	300517.393,518852.083	43.0	3.0	EXCAVATE TO 1.3 METRE BELOW FIELD LEVEL	TIE INTO EXISTING BED LEVEL

SINUOUS CHANNEL SPECIFICATION TABLE

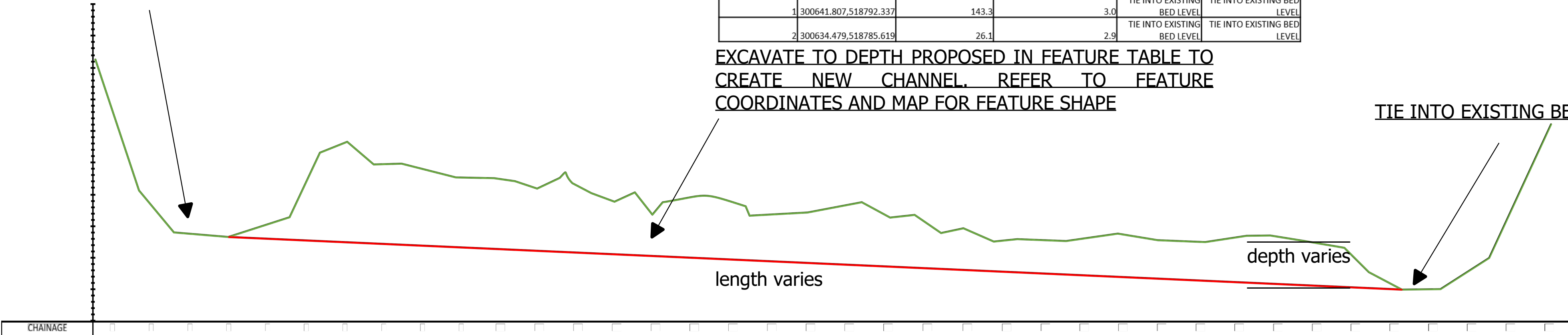
FEATURE NUMBER	UPSTREAM STARTING COORDINATE (OSGB)	LENGTH OF FEATURE (m)	MAX WIDTH OF FEATURE (m)	MAX UST LEVEL	MAX DST LEVEL
1	300622.494,519422.413	67.0	3.0	TIE INTO EXISTING BED LEVEL	TIE INTO EXISTING BED LEVEL
2	300620.250,519430.859	83.1	3.0	TIE INTO EXISTING BED LEVEL	TIE INTO EXISTING BED LEVEL
3	300624.326,519352.895	49.6	3.0	TIE INTO EXISTING BED LEVEL	TIE INTO EXISTING BED LEVEL
4	300625.776,519350.503	29.5	3.0	TIE INTO EXISTING BED LEVEL	TIE INTO EXISTING BED LEVEL
5	300591.246,519164.036	70.2	3.0	TIE INTO EXISTING BED LEVEL	TIE INTO EXISTING BED LEVEL
6	300567.378,519093.501	76.6	3.0	TIE INTO EXISTING BED LEVEL	TIE INTO EXISTING BED LEVEL
7	300523.229,518998.232	33.8	3.0	TIE INTO EXISTING BED LEVEL	TIE INTO EXISTING BED LEVEL

BIFURCATING CHANNEL SPECIFICATION TABLE

FEATURE NUMBER	UPSTREAM STARTING COORDINATE (OSGB)	LENGTH OF FEATURE (m)	MAX WIDTH OF FEATURE (m)	MAX UST LEVEL (m)	MAX DST LEVEL (m)
1	300641.807,518792.337	143.3	3.0	TIE INTO EXISTING BED LEVEL	TIE INTO EXISTING BED LEVEL
2	300634.479,518785.619	26.1	2.9	TIE INTO EXISTING BED LEVEL	TIE INTO EXISTING BED LEVEL

EXCAVATE TO DEPTH PROPOSED IN FEATURE TABLE TO CREATE NEW CHANNEL. REFER TO FEATURE COORDINATES AND MAP FOR FEATURE SHAPE

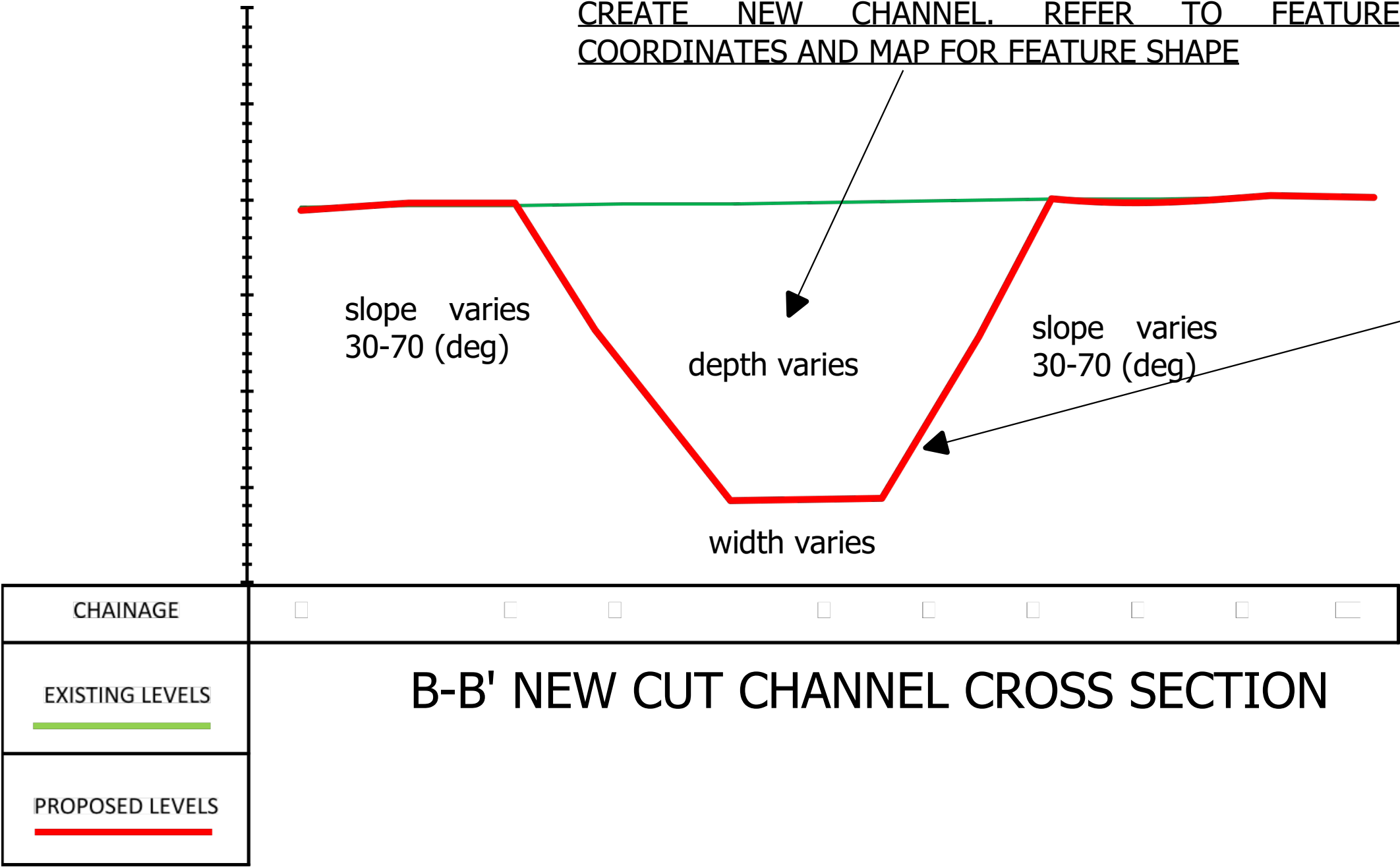
TIE INTO EXISTING BED LEVEL



TIE INTO EXISTING BED LEVEL

A-A' NEW CUT CHANNEL LONG SECTION

EXCAVATE TO DEPTH PROPOSED IN FEATURE TABLE TO CREATE NEW CHANNEL. REFER TO FEATURE COORDINATES AND MAP FOR FEATURE SHAPE



B-B' NEW CUT CHANNEL CROSS SECTION



Dynamic Rivers
(Survey and Design) Ltd



Convention
Centre, Skiddaw
St, Keswick CA12
4BY

REVISION	DATE
1	17/11

LEGEND:
Features

NOTES:

ALL EXCAVATION DEPTHS ARE GIVEN IN m (METRES BELOW GROUND LEVEL)

PROPOSED LEVELS MAY VARY +/- 100 mm TO GENERATE BED AND FEATURE VARIATION

CHAINAGE MEASUREMENTS ARE IN METERS

ALL ARISINGS TO BE STOCKPILED FOR DISPOSAL OFF SITE OR LOCAL SPREADING OUTSIDE OF THE FLOODPLAIN

REFER TO FEATURE BOUNDARY COORDINATES "DR-2022-0108- Walkmills_Coordinates" FOR EXACT INDIVIDUAL FEATURE SHAPES

PROJECT TITLE:

Walkmills Restoration

PROJECT NUMBER:

"DR-2022-0108

SHEET TITLE:

NEW CUT CHANNEL SECTIONS

AUTHORS:

Author: RW & ZW
Checked: SB
Approved: GH

SCALE:

MAP
SCALE AT
A1

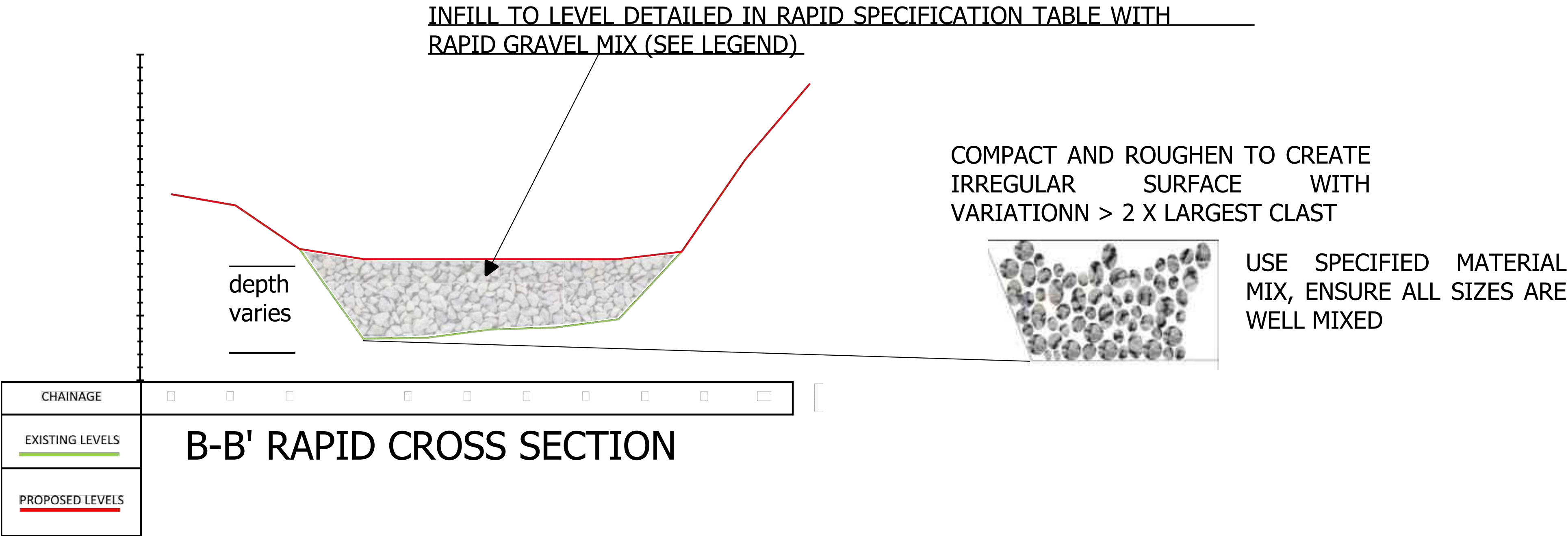
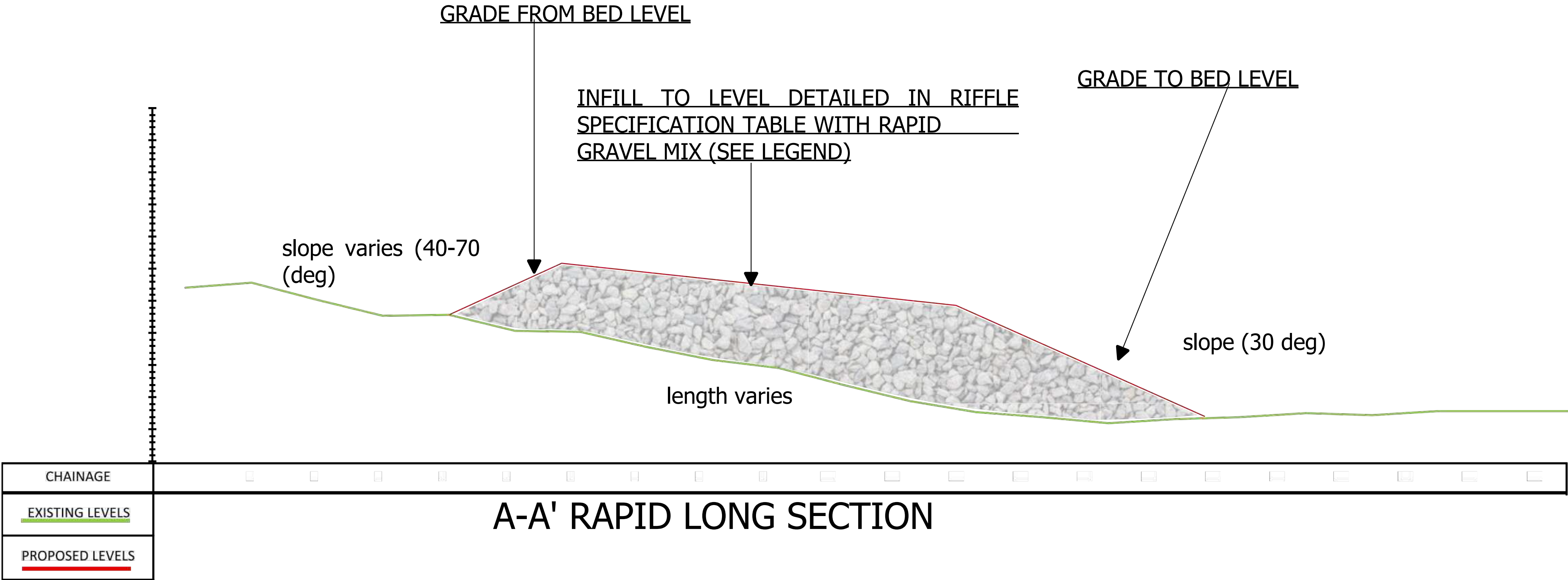
SHEET:

9



RAPID SPECIFICATION TABLE

FEATURE NUMBER	UPSTREAM STARTING COORDINATE (OSGB)	LENGTH OF FEATURE (M)	MAX WIDTH OF FEATURE (M)	Infill
1	300518.496,518863.121	31.5	FULL CHANNEL WIDTH	INFILL 0.5 CHANNEL DEPTH



Dynamic Rivers
(Survey and
Design) Ltd



Convention
Centre, Skiddaw
St, Keswick CA12
4BY

REVISION	DATE
1	17/11

LEGEND:

Features
Rapid Mix
50% 100-200 mm
40% 40-100 mm
10% 0-50 mm

NOTES:

ALL EXCAVATION DEPTHS ARE GIVEN IN m (METRES BELOW GROUND LEVEL)

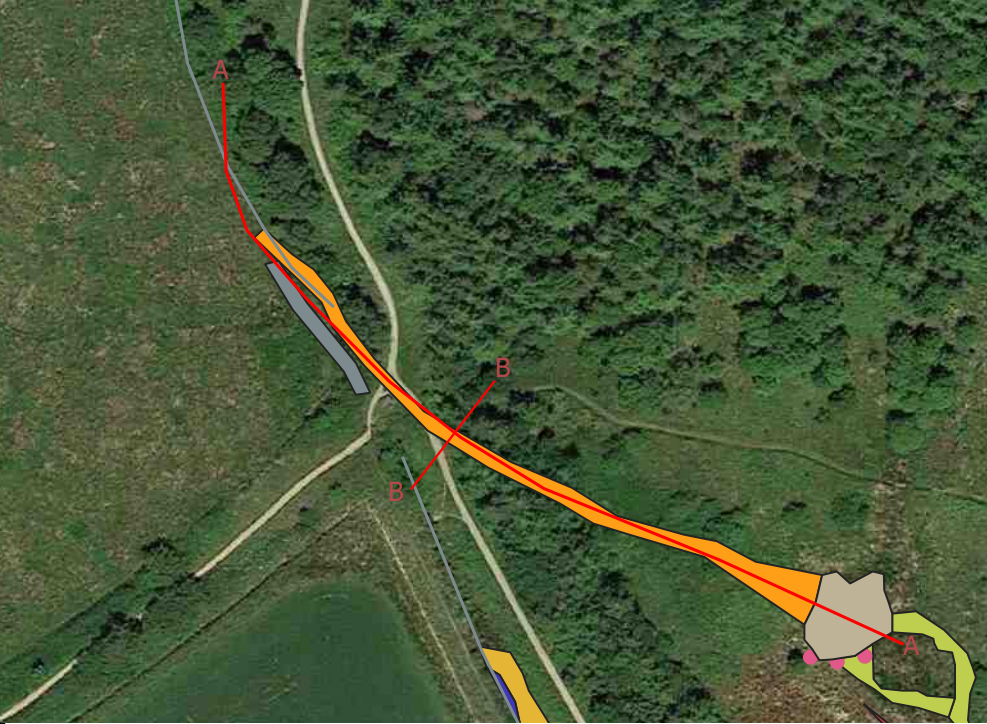
PROPOSED LEVELS MAY VARY +/- 100 mm TO GENERATE BED AND FEATURE VARIATION

CHAINAGE MEASUREMENTS ARE IN METERS

ALL ARISINGS TO BE STOCKPILED FOR DISPOSAL OFF SITE OR LOCAL SPREADING OUTSIDE OF THE FLOODPLAIN

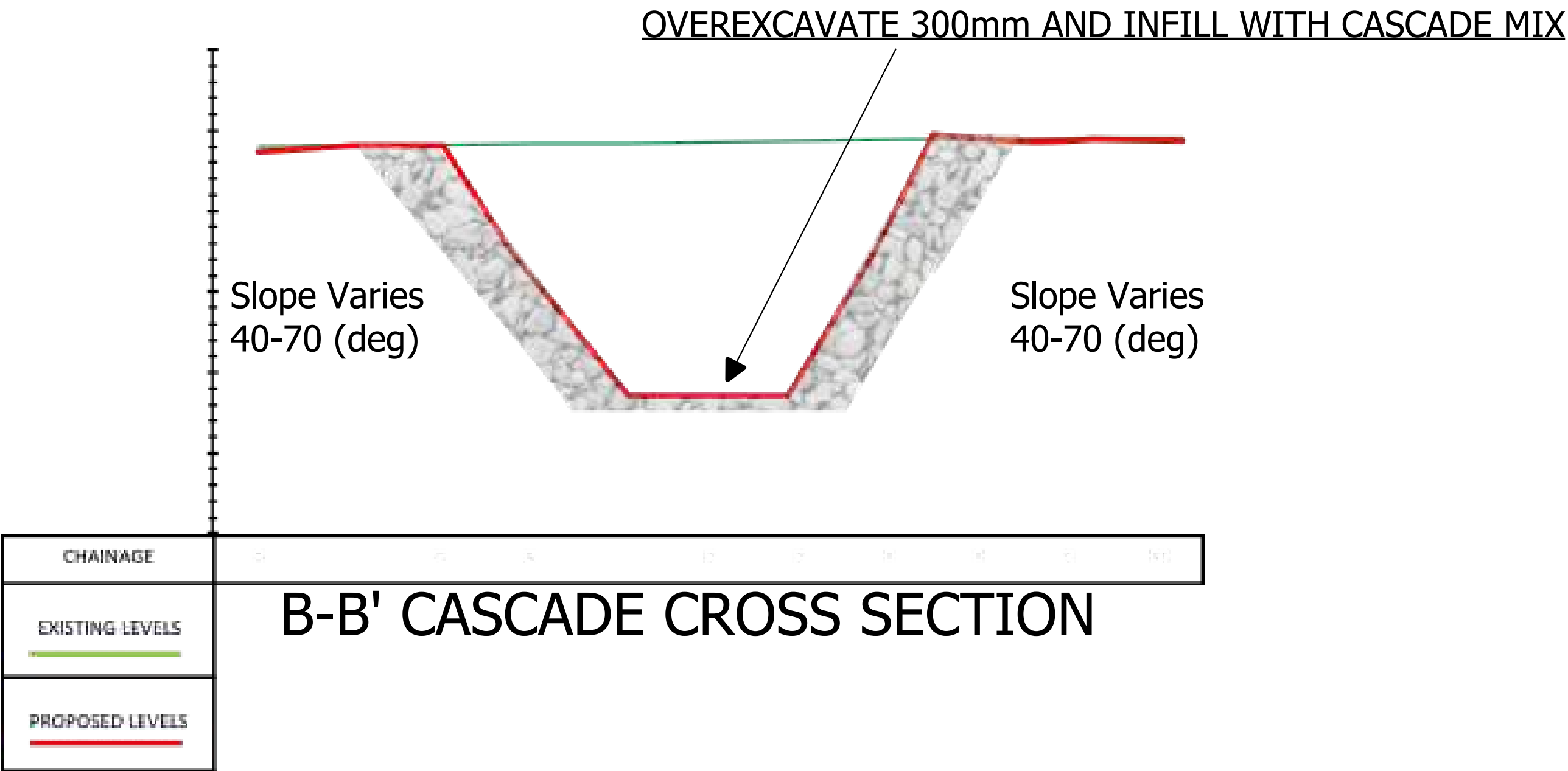
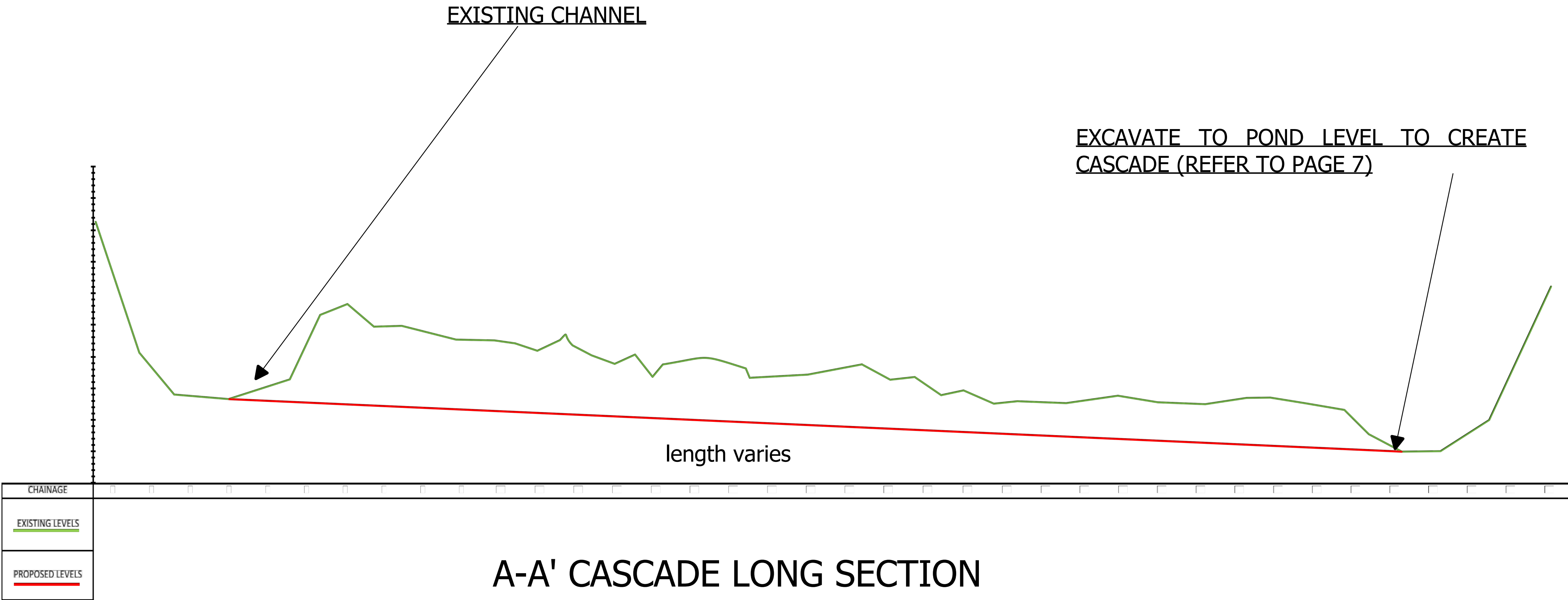
REFER TO FEATURE BOUNDARY COORDINATES "DR-2022-0108- Walkmills_Coordinates" FOR EXACT INDIVIDUAL FEATURE SHAPES

PROJECT TITLE: Walkmills Restoration	
PROJECT NUMBER: DR-2022-0108	
SHEET TITLE: RAPID SECTIONS	
AUTHORS: Author: RW & ZW Checked: SB Approved: GH	
SCALE: MAP SCALE AT A1	SHEET: 11



CASCADE SPECIFICATION TABLE

FEATURE NUMBER	UPSTREAM STARTING COORDINATE (OSGB)	LENGTH OF FEATURE (m)	MAX WIDTH OF FEATURE (m)	MAX UST LEVEL (m)	MAX DST LEVEL (m)
1	300534.023,518848.696	135.7	3.9	TIE INTO EXISTING BED LEVEL	TIE INTO EXISTING BED LEVEL



Dynamic Rivers
(Survey and
Design) Ltd



Convention
Centre, Skiddaw
St, Keswick CA12
4BY

REVISION	DATE
1	17/11

LEGEND:

Features
Cascade Mix
50% 200-300 mm
30% 100-200 mm
20% 50-100 mm

NOTES:

ALL EXCAVATION DEPTHS ARE GIVEN IN m (METRES BELOW GROUND LEVEL)

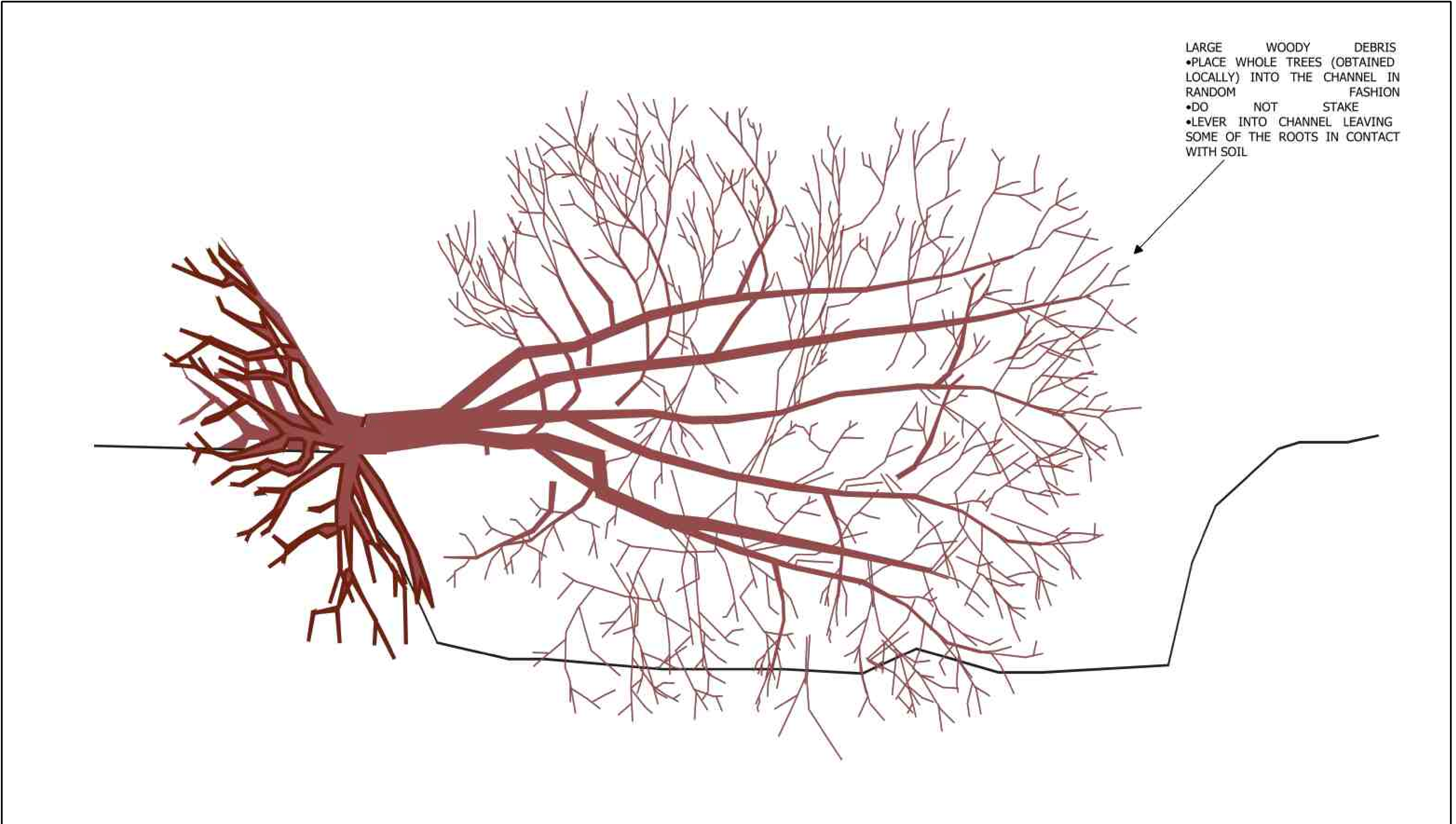
PROPOSED LEVELS MAY VARY +/- 100 mm TO GENERATE BED AND FEATURE VARIATION


CHAINAGE MEASUREMENTS ARE IN METERS

ALL ARISINGS TO BE STOCKPILED FOR DISPOSAL OFF SITE OR LOCAL SPREADING OUTSIDE OF THE FLOODPLAIN


REFER TO FEATURE BOUNDARY COORDINATES "DR-2022-0108- Walkmills_Coordinates" FOR EXACT INDIVIDUAL FEATURE SHAPES

PROJECT TITLE: Walkmills Restoration	
PROJECT NUMBER: DR-2022-0108	
SHEET TITLE: CASCADE SECTIONS	
AUTHORS: Author: RW & ZW Checked: SB Approved: GH	
SCALE: MAP SCALE AT A1	SHEET: 10





Dynamic Rivers
(Survey and Design) Ltd



Convention
Centre, Skiddaw
St, Keswick CA12
4BY

REVISION	DATE
1	17/11

LEGEND:
Features

NOTES:
ALL EXCAVATION DEPTHS ARE GIVEN IN m (METRES BELOW GROUND LEVEL)

PROPOSED LEVELS MAY VARY +/- 100 mm TO GENERATE BED AND FEATURE VARIATION

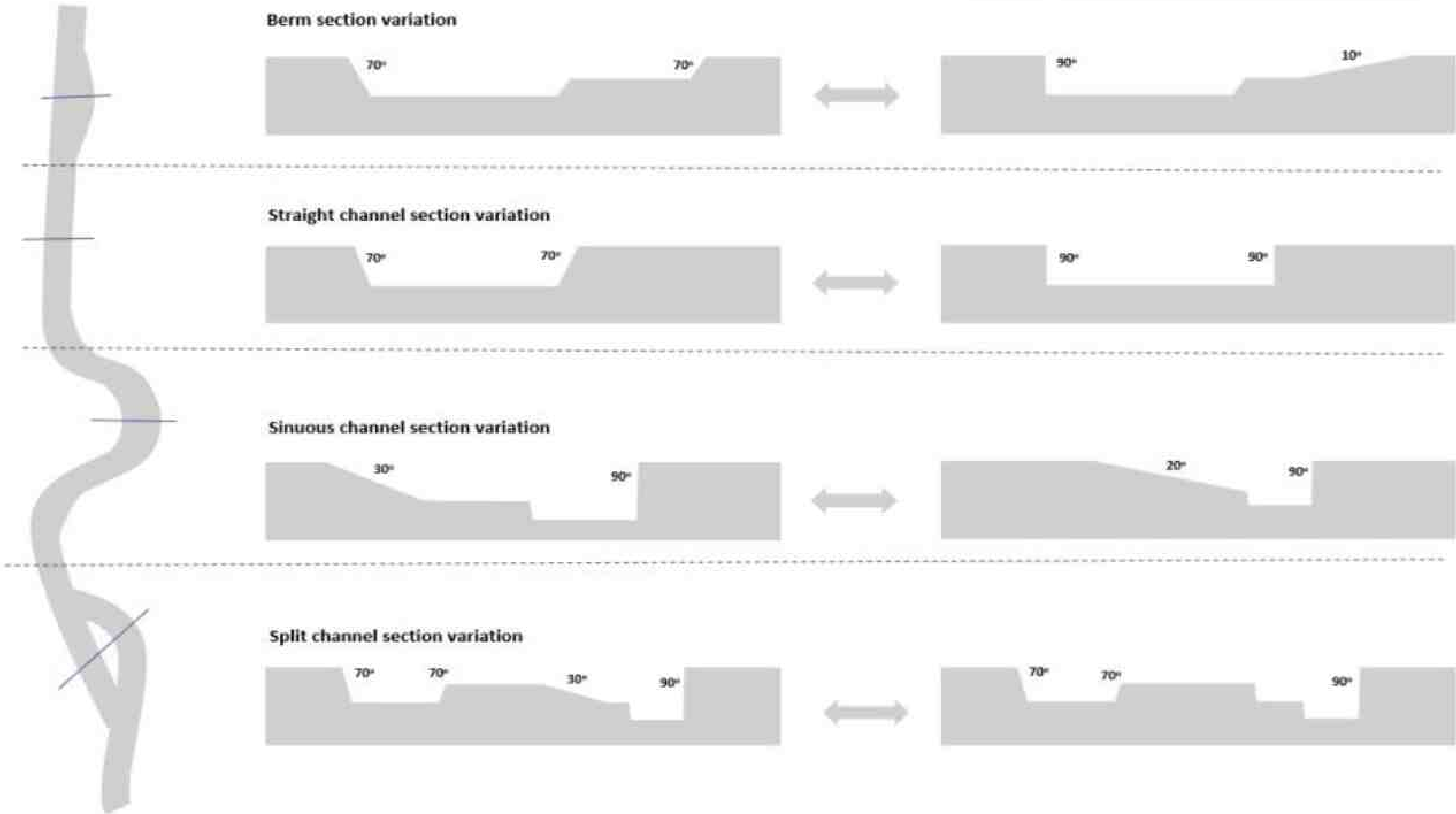
CHAINAGE MEASUREMENTS ARE IN METERS

ALL ARISINGS TO BE STOCKPILED FOR DISPOSAL OFF SITE OR LOCAL SPREADING OUTSIDE OF THE FLOODPLAIN

REFER TO FEATURE BOUNDARY COORDINATES "DR-2022-0108- Walkmills_Coordinates" FOR EXACT INDIVIDUAL FEATURE SHAPES

PROJECT TITLE: Walkmills Restoration	
PROJECT NUMBER: DR-2022-0108	
SHEET TITLE: LARGE WOODED DEBRIS SECTIONS	
AUTHORS: Author: RW & ZW Checked: SB Approved: GH	
SCALE: MAP SCALE AT A1	SHEET: 12

Initial Cut Channel Bank Variation



Dynamic Rivers
(Survey and
Design) Ltd



Convention
Centre, Skiddaw
St, Keswick CA12
4BY

REVISION	DATE
1	17/11

LEGEND:
Features

NOTES:
ALL EXCAVATION DEPTHS ARE GIVEN IN m (METRES BELOW GROUND LEVEL)

PROPOSED LEVELS MAY VARY +/- 100 mm TO GENERATE BED AND FEATURE VARIATION

CHAINAGE MEASUREMENTS ARE IN METERS

ALL ARISINGS TO BE STOCKPILED FOR DISPOSAL OFF SITE OR LOCAL SPREADING OUTSIDE OF THE FLOODPLAIN

REFER TO FEATURE BOUNDARY COORDINATES "DR-2022-0108- Walkmills_Coordinates" FOR EXACT INDIVIDUAL FEATURE SHAPES.

PROJECT TITLE: Walkmills Restoration	
PROJECT NUMBER: DR-2022-0108	
SHEET TITLE: NEW CUT CHANNEL EXAMPLE SECTIONS	
AUTHORS: Author: RW & ZW Checked: SB Approved: GH	
SCALE: MAP SCALE AT A1	SHEET: 13