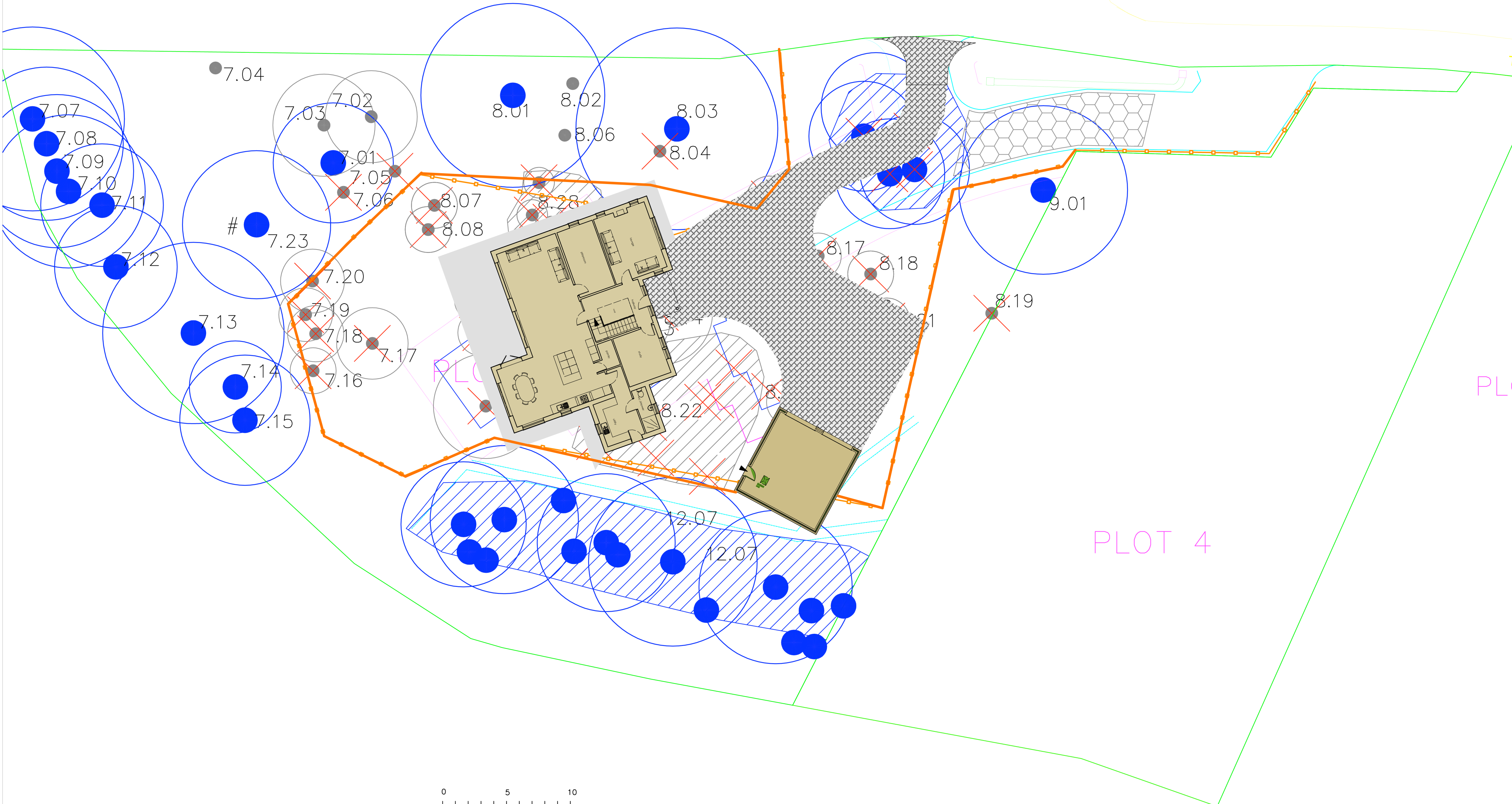


ROOT PROTECTION AREA FOR TREES REMAINING ON SITE -  
TREES ALREADY REMOVED AS PART OF PLANNING CONSENTED SCHEME  
16 JUNE 2021  
Site inspection required to review tree canopy on site now clearing works  
are completed hence overlap between house footprint & trees

note : Tree - dead - approval  
obtained from  
CBC for removal



Key

- Plot 5 The extents of Plot 5.
- The location of a tree and its respective number.
  - Trunk
  - Crown Spread
  - Root Protection Area (RPA)
- Retention Category A
- Retention Category B
- Retention Category C
- Retention Category U
- The outline of a proposed new building
- 2m buffer zone
- The outline of a proposed new driveway
- Tree or group of trees to fell
- Tree Protection Fence
- No-dig construction techniques and load bearing support system
- Construction Exclusion Zone

**Plan 3**  
Tree Protection Plan showing the proposed site layout and the tree protection measures.