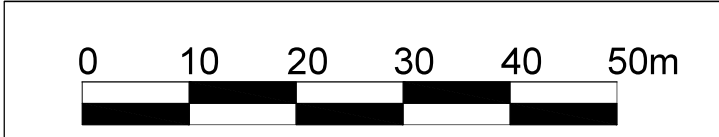


- MATERIAL STORAGE
- COMPOUND
- BUILD CAR PARK
- PEDESTRIAN ROUTES
- PEDESTRIAN CROSSING POINTS
- LOADING BAY
- FIRE POINT
- KERB GUARD



2091 - WATERS EDGE  
TRAFFIC MANAGEMENT PLAN  
v1.2