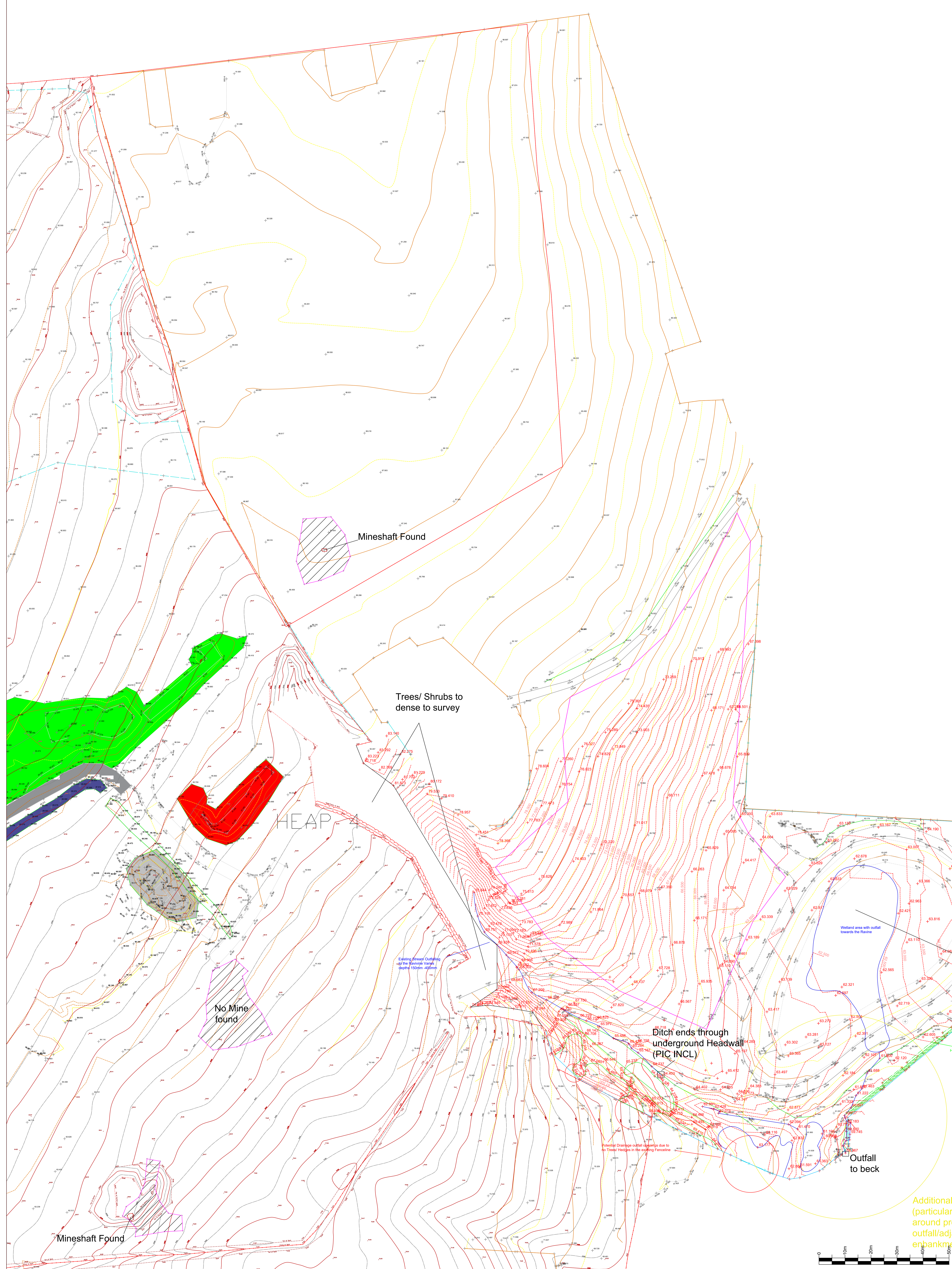


- LEGEND:**
- Blm of Batter
 - Top of Batter
 - Fence (General)
 - Fence (Pile/Stone)
 - Fence (Metal)
 - Fence (Close Board)
 - Hedge/line
 - Wall
 - Building (Structure)
 - Road (Channel)
 - Track
 - Kerbing
 - Footpath
 - Tree / Vegetation Canopy
 - Edge of Stone
 - Concrete
 - Tarmac / Asphalt
 - Drop Kerbing
 - Centreline
 - Verge
 - Edging/paths
 - Watercourse / Ditch
 - Contour (Major)
 - Contour (Minor)
 - Overhead Telecom Cable

- + Ground Level
- + Lampost
- + Electricity Pole
- + Telegraph Pole
- + Gas Valve
- + Cables / Comms
- + British Telecom
- + Bollard
- + Survey Station
- + Sign Post
- + Tree
- + Bush / Shrub
- + Hedges / Overgrowth
- + Waste Bin
- + Filter Drain
- + Manhole (Square)
- + Manhole (Circular)
- + Stop Valve
- + Air Valve
- + Fire Hydrant
- + Stop Cook
- + Invert Level
- + Invert Level
- + Wash Out
- + Road Gully
- + Gully
- + Metal Pole
- + Lighting Column
- + Wooden Post



DEVELOPMENT:	
EDGEHILL PARK, WHITEHAVEN	
DRAWING:	
TOPOGRAPHICAL SURVEY & HEAP VOLUMES	
DRAWN BY: KMP	DATE: 23/07/2020
SHEET SIZE: A0	SHEET # : 2/4
DRAWING NUMBER	REVISION
230720-EHP-SH-TOPO-001	
SITE REFERENCE	EHP
Revisions	Details
	Date
<p>PEACOCK PRECISION SERVICES LTD CIVIL ENGINEER & SURVEYOR peacock.precision@mail.com M: 07979181711</p>	

Additional to (particular) around pro outfall/adjacent embankment