



# STANDARD DESKTOP UTILITY SURVEY

## OUR REFERENCE

cen20928

## SEARCH AREA

thornlea

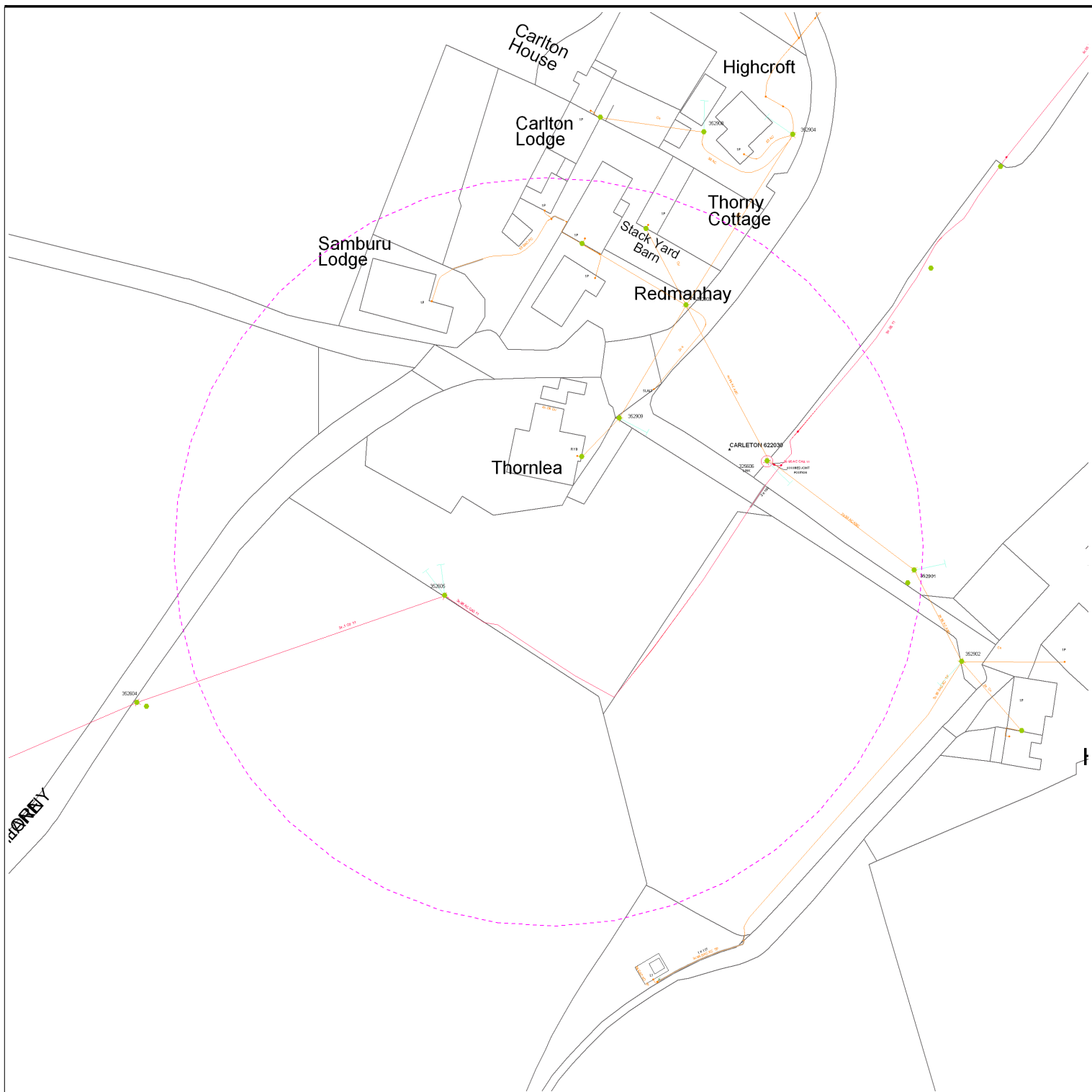
## CHECKLIST

UTILITY COMPANY	TYPE	AFFECTED YES / NO	NOTES
electricity north west	electric	yes	
northern gas	gas	yes	
united utilities	water	yes	
united utilities	sewer	yes	
bt	telecom	yes	
linesearch	various	yes	

COMPLETED BY	CHECKED BY	DATE ISSUED
shauna ross	Jake Handley-Parkin	16/07/2021



## **AFFECTED RESPONSES**



Requested by: Shauna Ross  
 Company: Centara  
 Date Requested: 09/07/2021  
 Job Reference: 22640001  
 Your Scheme/Reference: cen20928

Dig Sites:  
 Area ---- Line ----

Operating Voltage	Colour Code	Line Colour
132kV	Black	<span style="color: black;">----</span>
33kV	Green	<span style="color: green;">----</span>
22kV-25kV	Yellow	<span style="color: yellow;">----</span>
11kV	Red	<span style="color: red;">----</span>
6kV-6.6kV	Blue	<span style="color: blue;">----</span>
1kV-6kV	Violet	<span style="color: purple;">----</span>
LV	Orange	<span style="color: orange;">----</span>
Unknown Voltage	Brown	<span style="color: brown;">----</span>



Data Management  
 Electricity North West  
 Linley House  
 Dickinson Street  
 Manchester, M1 4LF  
 Phone: 0800 195 4141  
 Email: [planrequest@enwl.co.uk](mailto:planrequest@enwl.co.uk)

Scales on A4 paper:  
 1:1250 Area dig site  
 1:250 Line dig site

Unless otherwise indicated the depth of Electricity North West Limited cables are in accordance with NJUG (450mm for Low Voltage & 600mm for 11kV cables) 33kV and 132kV cables are laid at depths as marked. The depth and positions of Electricity North West Limited equipment was accurate as shown when the equipment was installed. However third parties may have altered the level & other reference data. Therefore Electricity North West Limited accept no responsibility for the position of Electricity North West Limited equipment being different from shown. No person, body or company, shall be relieved from liability for damage caused to Electricity North West Limited equipment by reason of being located differently to the indications on this drawing or from any regulatory loss of income or incentive, or expense, which may be suffered by Electricity North West Limited and which is caused or contributed to by any loss of supply as a result of any damage caused to Electricity North West Limited's equipment. Service cables are not necessarily shown but must be assumed to exist to all premises, streetlights and signs. There may be other Electricity North West Limited apparatus in the vicinity which is not indicated on the cable records. Other apparatus may also be present which is owned by a third party other than Electricity North West Limited.

Reproduced from or based upon Ordnance Survey's map with the permission of Her Majesty's Stationary Office. Crown Copyright Reserved. LICENCE No. 100017892. Unauthorised reproduction may lead to Prosecution or Civil Proceedings.

Reference should be made to HSE Guidance, HS(G)47 "Avoiding Danger from Underground Services" and GS6 "Avoidance of Danger from Overhead Power Lines".

Electricity North West Limited 304 Bridgewater Place, Birchwood Park, Warrington WA3 6XG. Registered in England and Wales. Registered No 02366949

# Conditions and information regarding electricity mains

These general conditions and precautions apply to the electricity distribution system of Electricity North West Limited.

Please ensure that a copy of these conditions is passed to your representative and contractor on site.

1. There may be other Electricity North West Limited apparatus in the vicinity, which is not indicated on the cable records. Other apparatus may also be present which a third party owns other than Electricity North West Limited
2. Before any machines are used all of Electricity North West's underground apparatus should be located by manual excavation taking the appropriate safety precautions in accordance with the **Health and Safety Executive Guidance note HS(G)47 "Avoiding danger from underground services"**. This contains advice to site personnel when working near underground services.

Underground services, particularly electricity and gas, can be dangerous. Damage to electricity cables can cause a dangerous flash, leading to severe burns or even death. Gas leaks can cause fire or explosion.

Damage can result from excavation or penetration of the ground, e.g. by a road pin.

Underground services may be found in roads, footpaths and on sites. Always assume that they are present. Treat any services found anywhere as live.

Accidents have happened because people have mistaken one service for another, e.g. black plastic covered electricity cables look like black plastic water pipes and cast iron gas and water mains look alike. Check before you act.

3. Before starting work you must:
  - Make sure you have plans of the underground services in the area. This may not always be possible for emergency or unforeseen works. **Remember that service connection cables and pipes from the main to building or streetlight may not be shown.**
  - Use a cable and pipe locator to trace electricity cables and metal pipes.
  - Look for signs of service connection cables or pipes, e.g. a gas meter or service connection entry into a house or a streetlight.
  - Hand dig trial holes (as many as necessary) to confirm the position of services in close proximity to the area of work.

4. When you start work:

- Hand dig near buried services whenever possible. Spades and shovels are safer than picks, pins or forks.
- Remember that cables may be embedded in concrete. Electricity cables embedded in concrete **must** either be made dead before the concrete is broken out or another safe way of working agreed with the cable owner.
- Watch out for signs of services as work continues.
- Report damage to a cable, pipe or pipe coating however slight.
- Do not use hand held power tools within 0.5m of the marked position of an electricity cable, unless this is impracticable and the line of the cable has been identified by plans and positively confirmed by a locator.
- Do not use hand held power tools directly over the marked line of cable unless:
  - a) You have already found the cable at that position by careful hand digging beneath the surface and it is at a safe depth (at least 300mm) below the bottom of the surface to be broken, or
  - b) Physical means have been used to prevent the tool striking it.
- If an excavator is used near an electricity cable keep everyone clear of the bucket while it is digging. Buckets should not be used near cable – hand dig.
- Do not use exposed services as a convenient step or handhold.
- Do not handle or attempt to alter the position of an exposed service.
- Do not install plant close to an existing service.
- Do not build existing services into a manhole or other structure or encase them in concrete.

Would you also ensure that all site operators have this information and if any electrical apparatus is damaged, they/you should contact Electricity North West Limited fault desk on **0800 195 4141 (option 1)**

5. Overhead lines are not necessarily shown on the Electricity North West Limited cable records but may be present. In the event of work being carried out adjacent to overhead lines (including access, storage etc.) please always ensure strict adherence to the requirements of the **Health and Safety Executive's Document GS6 "Avoidance of Danger from Overhead Electric Lines"**.

Extreme personal danger can result from contact, or near contact, with live conductors or overhead lines.

**Treat all overhead lines and other electrical apparatus as live. If in doubt, get advice.**

6. Electricity North West Limited must be consulted if work is to take place within 15 metres of overhead lines on steel towers or 9 metres of overhead lines on wood, concrete or steel pylons. (All distances should be measure at ground level from a position estimated by eye to be vertically under the outermost conductor at a tower or pole position) Any person involved in work in the vicinity of overhead lines should:
- Understand and follow the instructions given on safe working areas and methods of work.
  - Make sure that warning notices are in the cabs of machines working in the vicinity of an overhead line.
  - Make sure that barriers and warning notices are erected as required.
  - Not tip soil or stack material underneath overhead lines as this may reduce the clearance to an unsafe distance.
  - Make sure when handling or using platforms, scaffold, poles, piping, ladders, hand tools etc., that they are kept at a safe distance from overhead lines.
  - Not steady a suspended load, skip, hoist wire, slings etc., unless satisfied that there isn't any danger from overhead lines.
  - Remember that when mobile plant, such as a crane or excavator, is operating near overhead lines, the raising or slewing of the jib may introduce danger.
  - Always keep overhead lines in view when manoeuvring mobile plant.
  - Never operate a machine unless carefully guided by an experienced banksman.
  - Not approach or touch any broken or fallen conductors or any plant in contact with an overhead line before Electricity North West Limited confirms that conditions are safe. Warn others to keep well clear.

**Machine operators should note that:** if a machine comes into contact with an overhead line and cannot be disentangled by backing off, remain seated in the cab and warn others to keep clear of the machine until Electricity North West Limited confirms that conditions are safe. If it is essential to

leave the machine while it is in contact with the overhead line, for example if it catches fire, jump well clear – and **do not** attempt to climb down in the normal way nor touch any part of the machine when on the ground.

7. Electricity North West Limited provides approximate locations of its electricity mains or apparatus according to its records but these records are not necessarily accurate or complete and do not always show the position of private cables from mains to properties. No person or company shall be relieved from liability for any damage caused by reason of the actual positions and/or depths being different from those indicated.

8. Care should be taken when excavating near cables. Known road crossings are highlighted on the enclosed plans. Should any cable, or Electricity North West Limited apparatus indicated on the attached plans, be affected by your proposals please contact us as follows:

Data Management  
Linley House  
Dickinson St  
Manchester  
M1 4LF

Telephone: **0800 195 4141 (option 2)**

Details of diversion costs, if any, will be provided on request once your firm proposals have been submitted.

9. Please note that service cables may be affected by some of the works being carried out on site.

If any services do require temporary disconnection please phone **0800 195 4141 (option 2)** for domestic and commercial disconnection, so that arrangement can be made to disconnect before work commences on site.

10. For information regarding supplies please contact us on **0800 195 4141 (option 2)**.

11. Please note that cable records supplied may not be up to date, or may be incomplete, if the area concerned is a new site.

12. For information regarding wayleave or easement agreements contact:

Manchester	<b>08433 115157</b>
Preston	<b>08433 113969</b>
Kendal	<b>08433 115155</b>

13. The latest cable records are always available for inspection during normal working hours and you should satisfy yourself that the information you have is up to date at the time you commence work. This service is consistent with the requirement of Regulation 36 of the Electricity Supply Regulations and paragraph 79 of the New Road and Street Works Act.

Please contact Data Management on **0800 195 4141 (option 2)** to arrange an appointment to view the records.



304 Bridgewater Place  
Birchwood Park  
Warrington  
WA3 6XG

[www.enwl.co.uk](http://www.enwl.co.uk)

Registered in England and Wales  
Registered Number 2366949



**Electricity North West**  
Data Management,  
Electricity North West  
Linley House  
Dickinson Street  
Manchester, M1 4LF  
Phone: 0800 195 4141  
Email: [planrequest@enwl.co.uk](mailto:planrequest@enwl.co.uk)  
Web: [www.enwl.co.uk](http://www.enwl.co.uk)

Miss Shauna Ross  
Centara  
Office 10, Normanton Business Park Ripley Drive  
Normanton West Yorkshire  
WF6 1QT

Our Reference: 22640001

Your Reference: cen20928

Dear Miss Shauna Ross

#### **Electricity Network Plans**

I acknowledge with thanks your request dated 09/07/2021 09:14:20 AM for information on the location of our services.

Please find enclosed plan(s) showing the approximate position of our apparatus known to be in the vicinity of this site.

I attach Conditions and information regarding electricity mains, which details contact numbers for additional services (i.e. new supplies, connections, diversion). In addition you should ensure they are made available to anyone carrying out any works which may affect our apparatus.

Yours sincerely,

Data Management



## **Important Safety Guidance**

Northern Gas Networks is the gas distribution company for the North East, Yorkshire and Northern Cumbria. We own about 37,000km of gas mains, plus other vital equipment, which supply gas to some 2.7 million homes and businesses.

If you or one of your contractors plans to work near gas pipes or other Northern Gas Networks equipment you must let us know.

Damaging gas pipes is dangerous and potentially very expensive. Not only could it lead to a fire or explosion it could result in a large scale loss of gas supplies to local communities.

Safety is Northern Gas Networks' top priority. We need to make sure no-one damages our equipment accidentally and puts either themselves or members of the public at risk.

Our work in this area is covered by the Pipeline Safety Regulations and by the Northern Gas Networks' Safety Case which is approved by the Health and Safety Executive (HSE).

**Our web site [www.northerngasnetworks.co.uk](http://www.northerngasnetworks.co.uk) has safety guidance booklets which can be downloaded which will assist you when carrying out any works (see below). We strongly recommend that you use these as a reference guide prior to commencing works.**

Should you have any difficulties in downloading these documents please give us a ring on 0845 634 0508 option 6.

1/ Damage Prevention leaflet

2/ Safe working in the vicinity of high pressure gas pipelines and associated installations.

3/ Avoiding injury when working near gas pipes up to 7bar.

**Remember: If at any point during your works you ever smell gas call the National Gas Emergency Service free on 0800 111 999.**

## **Northern Gas Networks Plant Protection Officer**

**David Turner  
Northern Gas Networks  
Pottery Fields House  
Kidacre Street  
Leeds  
LS10 1BD**

Tel: 0113 276 8272

Mob: 07811 970 224

E mail: [dturner@northerngas.co.uk](mailto:dturner@northerngas.co.uk)

### **Examples of Higher Risk Works are (but not limited to):**

Any excavation works within 3m of Intermediate and High Pressure Pipelines  
Explosives within 250m of Intermediate and High Pressure Pipelines (30m for lower pressures)  
Piling Works within 15m  
Hot Works (welding, cutting, grinding, grit blasting)  
Excavations within 10m of a pressure reduction unit  
Mechanical Excavation within 0.5m of low/medium pressure mains, 3m for higher pressures (distance measured from the proven position of the gas pipe).  
Excavations deeper than 1.5m  
Trenchless technology  
Chain trenching  
Mains splitting  
Heavy loadings i.e. cranes spoil deposits and heavy construction traffic  
Auger operations, vertical and horizontal  
Demolition works within 150m of Intermediate and High Pressure Pipelines (15m for lower pressures)  
Surface mineral extraction  
Deep mining  
Land Filling  
Hydraulic pressure testing  
Seismic surveys



If you are working in the vicinity of gas pipes above 7 bar in pressure please contact us if you have not already got a copy of 'SSW22 Safe working in the vicinity of Northern Gas Networks high pressure pipelines and associated installations'.

#### Access

Access to sites and to Northern Gas Networks apparatus must be provided at all times. This includes temporary structures and spoil heaps over Northern Gas Networks pipes.

#### Crossing Northern Gas Networks plant

The placing of heavy construction plant, equipment, materials or the passage of heavy vehicles over Northern Gas Networks apparatus is prohibited unless specially agreed protective measures (i.e. the construction of reinforced crossing points) have been carried out. This is particularly important where reductions in side support or ground cover are planned.

#### Working in wayleaves or easements

Work should not be undertaken within a Northern Gas Networks wayleave/easement without the formal written consent of Northern Gas Networks.

In the event of a query your local contact number is:

Tel: 0845 6340508 (option 6)  
Email: [plantprotection@northerngas.co.uk](mailto:plantprotection@northerngas.co.uk)



#### Exposed plant

Where excavations adjacent to gas apparatus affects its support, the apparatus must be adequately supported and protected in consultation with and to the satisfaction of Northern Gas Networks. All exposed plant must be protected from impact. Thrust blocks and supports must not be disturbed.

Where welding or other hot works involving naked flames is contemplated this should only be carried out if it can be done without damaging plastics or protective coatings of pipes. If you smell gas do not start work and call 0800 111 999\*.

Shuttering must be constructed so as to prevent fresh concrete encasing Northern Gas Networks apparatus and to maintain the stated clearances.

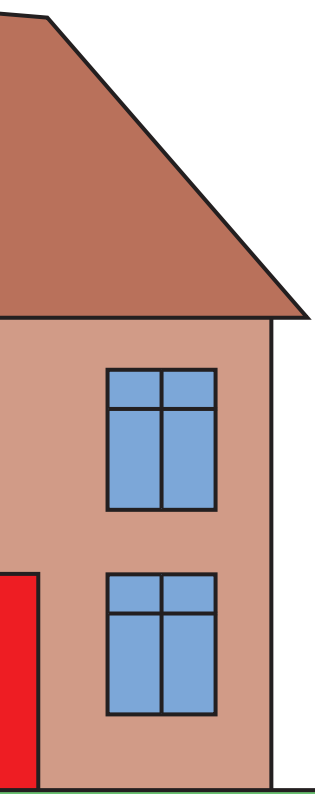
If you damage Northern Gas Networks gas pipes or apparatus, including damage to wrapping or sleeving you must call 0800 111 999\* immediately.



## Avoiding injury when working near gas pipes

Measures to stay safe and avoid damage when working near gas pipes operating at pressures of up to 7 bar





The following protective measures must be taken when excavating in the vicinity of Northern Gas Networks apparatus at up to 7 bar pressure.

Reference should be made to the HSE Guidance Note HSG 47 'Avoiding Danger from Underground Services' and to 'Utilities Guidelines on Positioning and Colour Coding of Apparatus'. This document can be downloaded free of charge at [www.njug.org.uk](http://www.njug.org.uk)

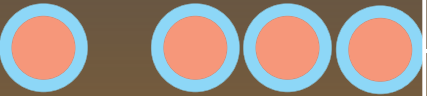
To avoid injury to workers you must verify the details given on plans or traced by electronic tracers by hand dug trial holes and mark the position on site with suitable markers.

Surface boxes/manholes

Do not bury or move Northern Gas Networks surface boxes. Access must be maintained both during and after your works. Northern Gas Networks reserve the right to locate and/or realign any boxes not left in such condition upon completion of your works and at your expense. No manhole cover or other structure is to be built over, around, or under a gas pipe and no work is to be carried out which results in a reduction or increase in cover or protection, without agreement.

Clearances

No apparatus is to be laid over and along the line of a gas pipe irrespective of clearance. To allow the future repair and maintenance of gas apparatus, a minimum clearance of 250mm or 1.5 times the external diameter of the gas pipe, whichever is the greater, should be maintained between the gas apparatus and any new plant. Where this minimum clearance cannot be achieved, site discussions should be held with Northern Gas Networks to agree a suitable clearance.



Deep Excavations

If a sewer trench or any other water authority apparatus is to be constructed at greater than 1.5 metres deep near to a buried cast iron main, the model consultative procedure for pipeline construction involving deep excavations applies. Northern Gas Networks is to be provided with detailed drawings showing the line and width of the proposed sewer or other apparatus trench, together with the soil group classifications of the area concerned.

You must ensure full colour copies of Northern Gas Networks plans are issued to the workers carrying out the excavations.

Every possible precaution must be taken to avoid personal injury or damage to Northern Gas Networks apparatus during the progress of the works. Any costs incurred by Northern Gas Networks for the repair of direct or consequential damage will be recharged in full.

Northern Gas Networks reserves the right to divert any affected apparatus if proved necessary during the course of your works: the cost of which will be recharged.

Minimum Safe Working Distances

If you are carrying out any of the following activities please contact Northern Gas Networks for further guidance :-

Explosions, piling, boring and deep excavations.

Mechanical excavations

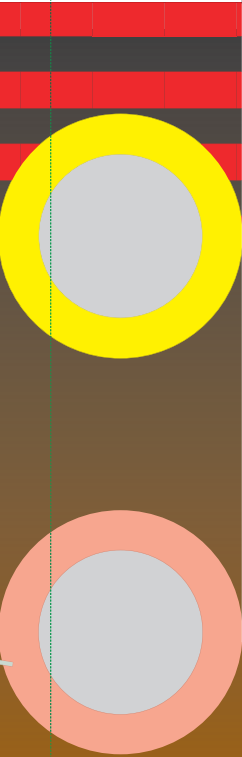
Mechanical excavators (including breaker attachments) **MUST NOT** be used within the following distances from gas mains and services.

Type of mains and services	Hand excavations required inside
Low Pressure	0.5 metres
Medium Pressure	0.5 metres
Intermediate Pressure	3.0 metres

Trial holes must be dug by hand to determine the exact location of mains and services in advance of excavating or thrust boring.

Tree planting

If trees or shrubs are to be planted adjacent to our plant, the selection of the type of tree or shrub and its planting must be considered so that root damage to buried mains or services will be avoided and that damage to trees or shrubs will not be caused by any subsequent excavations for repair and maintenance. Planting schemes should be submitted to Northern Gas Networks for approval. We reserve the right to remove any tree/bush at any time in the future.



Backfilling

Concrete backfill should not be placed closer than 300mm to apparatus. No concrete or hard material should be placed under or adjacent to any apparatus.

Material used for the surround backfill of Northern Gas Networks plant must conform to the following requirements:

- If sand, it must be well-graded in accordance with BS EN 12620: 2002.
- It must not contain any sharp particles.
- Foamed concrete should not be used.
- It must be laid to a minimum depth of 150mm above the crown of the apparatus. Power ramming should not take place until a 250mm hand rammed layer has been completed over the crown of the pipe.

If you cause a gas leak, or suspect a pipe or equipment is leaking, you must take the following actions immediately:

- Inform Northern Gas Networks immediately on 0800 111 999\*.
- Get everyone away from the immediate vicinity of the escape.
- Do not attempt to stop the escape by filling the hole as gas may enter buildings.
- Ask occupants of buildings adjacent to the escape to leave until it has been established that it is safe for them to return.
- Damage to a service supplying a building may result in gas entering the building. Do not attempt to operate any valves.
- Prevent any approach to the immediate vicinity of the escape.
- Prohibit smoking and extinguish all naked flames or other sources of ignition for at least 15m from the leakage.
- Assist Northern Gas Networks, Police or Fire Services as requested.

Smell gas? Call free  
0800 111 999\*

\*All calls are recorded and may be monitored.



**TO OBTAIN ADVICE WHEN WORKING  
NEAR GAS PIPES, YOUR LOCAL  
CONTACT NUMBER IS  
0845 634 0508 (option 6)  
or fax 0191 2012384**

## **GAS PIPE SAFETY**

- You must have a site induction and read relevant risk assessments to prevent injury

- You must know where gas pipes are – if in doubt ask your supervisor
- Before digging, gas pipes must be located by hand dug trial holes
- Before using mechanical excavators always locate gas pipes by hand dug trial holes
- You must not use a mechanical excavator within 0.5 metres of a low /medium pressure gas pipe and within 3.0 m of an intermediate pressure gas pipe

- Any concrete blocks near gas pipes must not be removed as they may be part of an anchoring system – if in doubt contact Northern Gas Networks
- Gas pipes must be supported as agreed and detailed in the risk assessment
- Take care to avoid trench collapse and trench sheets must not be placed against metallic gas pipes

- To avoid injury use PPE as detailed in the risk assessment
- Report all damage, no matter how slight. A pipe pulled, but undamaged, may cause a leak in a building with an explosion and injury or loss of life

**STOP – no work until a gas plan is available**

**LOOK – locate gas pipe first by hand excavation**

**LISTEN – to Northern Gas Networks instructions**

If you cause a gas leak, or suspect a pipe or equipment is leaking, you must take the following actions immediately:

- Inform Northern Gas Networks immediately on 0800 111 999\*.
- Get everyone away from the immediate vicinity of the escape.

**SMELL GAS CALL FREE**

**0800 111 999\***

- Do not attempt to stop the escape by filling the hole as gas may enter buildings.
- Ask occupants of buildings adjacent to the escape to leave until it has been established that it is safe for them to return.
- Damage to a service supplying a building may result in gas entering the building. Do not attempt to operate any valves.

**SMELL GAS CALL FREE**

**0800 111 999\***

- Prevent any approach to the immediate vicinity of the escape.
- Prohibit smoking and extinguish all naked flames or other sources of ignition for at least 15m from the leakage.
- Assist Northern Gas Networks, Police or Fire Services as requested.

*\*All calls are recorded and may be monitored*

Designed and produced by Northern Gas Network Communications. UUG2290C T/PR/DP1 Part 2

## Avoiding injury when working near gas pipes



**Northern  
Gas Networks**



Safe working in the vicinity of  
Northern Gas Networks high pressure  
gas pipelines and associated installations





Emergency Telephone Number for pipeline  
damage or gas escapes

0800 111 999\*

\*All calls are recorded and may be monitored

# Contents

<b>Foreword</b>	<b>2</b>
<b>Introduction</b>	<b>3</b>
<b>Document Flowchart</b>	<b>4</b>
<b>1. Scope</b>	<b>6</b>
<b>2. Formal Consent</b>	<b>6</b>
2.1 Within an Easement	6
2.2 Within the Highway	7
<b>3. HS&amp;E Considerations</b>	<b>7</b>
3.1 Safe Control of Operations	7
3.2 Deep Excavations	7
3.3 Positioning of Plant	8
3.4 General	8
<b>4. Pipeline Locating</b>	<b>8</b>
<b>5. Slabbing</b>	<b>9</b>
<b>6. Excavation</b>	<b>9</b>
6.1 In Proximity to a Pipeline in an Easement	9
6.2 In Proximity to a Pipeline in the Highway	10
6.3 Crossing Over a Pipeline	11
6.4 Crossing Below a Pipeline	11
6.5 Cathodic Protection	12
<b>7. Construction Traffic</b>	<b>12</b>
<b>8. Specific Activities</b>	<b>12</b>
8.1 No-Dig Techniques	13
8.2 Increase in Cover	13
8.3 Piling	13
8.4 Demolition	14
8.5 Blasting	14
8.6 Surface Mineral Extraction	14
8.7 Deep Mining	15
8.8 Landfilling	15
8.9 Pressure Testing	16
8.10 Seismic Surveys	16
8.11 Hot Work	16
<b>9. Backfilling</b>	<b>16</b>
<b>10. Action in the Case of Damage to the Pipeline</b>	<b>17</b>
<b>11. References</b>	<b>17</b>
<b>12. Glossary of Terms</b>	<b>18</b>
<b>APPENDIX</b>	
<b>A Site Document Control Form</b>	<b>19</b>

# Foreword

This specification was approved by the transmission policy engineer, as document number T/SP/SSW22 on 3rd November 2003 for use throughout Northern Gas Networks.

Comments and queries regarding the technical content of this engineering document should be directed to;

## **Standards Section**

**Northern Gas Networks**

**Thorpe Park**

**1100 Century Way**

**Leeds LS15 8TU**

Northern Gas Networks documents are revised, when necessary, by the issue of new editions. Users should ensure that they are in possession of the latest edition.

Compliance with this engineering document does not confer immunity from prosecution for breach of statutory or other legal obligations.

Contractors and other users external to Northern Gas Networks should direct their requests for further copies of Northern Gas Networks engineering documents to the department or group responsible for the initial issue of their contract documentation.

# Disclaimer

This engineering document is provided for use by Northern Gas Networks and such of its contractors as are obliged by the terms of their contracts to comply with this engineering document. Where this engineering document is used by any other party, it is the responsibility of that party to ensure that the engineering document is correctly applied.



# Specification for Safe working in the vicinity of Northern Gas Networks high pressure gas pipelines and associated installations – requirements for third parties

## Introduction

This specification is for issue to third parties carrying out work in the vicinity of high pressure gas pipelines (above 7 bar gauge) and associated installations and is provided to ensure that individuals planning and undertaking work take appropriate measures to prevent damage.



Any damage to a high-pressure gas pipeline or its coating can affect its integrity and can result in failure of the pipeline with potential serious hazardous consequences for individuals located in the vicinity of the pipeline if it were to fail. It is therefore essential that the procedures outlined in this document are complied with when working near to a high pressure, above 7 bar gauge, pipeline. If any work is considered by Northern Gas Networks to be in breach of the requirements stipulated in this document then the Northern Gas Networks responsible person will suspend the work until the non-compliances have been rectified.

The Pipelines Safety Regulations state that “No person shall cause such damage to a pipeline as may give rise to a danger to persons” (Regulation 15). Failing to comply with these requirements could therefore also result in prosecution by the Health and Safety Executive (HSE).

The requirements in this document are in line with the requirements of the IGE (Institute of Gas Engineers) recommendations IGE/SR/18 Edition 2 – Safe Working Practices To Ensure The Integrity Of Gas Pipelines And Associated Installations and the HSE's guidance document HS(G)47 Avoiding Danger from Underground Services.

It is the responsibility of the third party to ensure that any work carried out also conforms with the requirements of the Construction and Design Management Regulations and all other relevant health and safety legislation.

## When carrying out work in the vicinity of a high pressure pipeline follow the following process

### CONTACT NORTHERN GAS NETWORKS

Contact Northern Gas Networks to obtain formal consent – Section 2 of this document.

**Note:** at least 7 working days notice prior to commencement of the work is normally required.



### CONSIDER SAFETY

Consider the safety requirements – Section 3 of this document.



### INFORM NORTHERN GAS NETWORKS AND REQUEST PIPELINE LOCATION

Inform Northern Gas Networks prior to carrying out work and arrange for Northern Gas Networks to locate the pipeline – Section 4 of this document.

**Note:** at least 7 working days notice is normally required.



### OBSERVE RESTRICTIONS

Observe Northern Gas Networks restrictions on the allowed proximity of mechanical excavators and other power tools and the measures to protect the pipeline from construction vehicles when carrying out the work – Sections 5, 6 and 7 of this document.

**Note:** Northern Gas Networks may wish to supervise the work, consult Northern Gas Networks to confirm whether or not this is the case.

## SPECIFIC ACTIVITIES

If work involves any of the following activities:

No-Dig Techniques	Hot Work	Landfilling
Increase in Cover	Blasting	Pressure Testing
Piling	Surface Mineral Extraction	Seismic Surveys
Demolition	Deep Mining	

Comply with the requirements in Section 8 of this document.

## CONSULT National Gas Networks

Consult Northern Gas Networks prior to any backfilling over, alongside or under the pipeline and obtain Northern Gas Networks' agreement to proceed. Normally Northern Gas Networks require 48 hours notice prior to backfilling – Section 9 of this document.

**IMPORTANT:** This flowchart should be used in conjunction with the entire SSW22 document and not in isolation, AND if at any time during the works the pipeline is damaged even slightly then observe the precautions in Section 10 of this document.

**IF IN DOUBT CONTACT NORTHERN GAS NETWORKS**

# 1. Scope

This specification sets out the safety precautions and other conditions affecting the design, construction and maintenance of services, structures and other works in the vicinity of Northern Gas Networks pipelines and associated installations operating at pressures greater than 7 bar gauge, located in both negotiated easements (see Section 12) and public highways.

# 2. Formal Consent

High pressure pipelines are generally laid across country within an easement agreed with the landowner or within the highway.

As the required arrangements for working within an easement and working within the highway differ, this document has been structured to highlight the specific requirements for these two types of area where work may be carried out.

In Scotland a 'Deed of Servitude', known generally as a 'wayleave' is considered equivalent to 'easement' in this document.

Generally, normal agricultural activities are not considered to affect the integrity of the pipeline, however consult Northern Gas Networks prior to undertaking deep cultivation in excess of 0.5 metres.

In all other cases no work shall be undertaken in the vicinity of the pipeline without the formal written consent of Northern Gas Networks.

Any documents, handed to contractors on site by Northern Gas Networks, must be signed for by the site manager. Northern Gas Networks will record a list of these documents using the form in Appendix A, and the contractor should maintain a duplicate list.

## 2.1 Within An Easement

The promoter of any works (see Section 12) within an easement must provide Northern Gas Networks with details of the proposed works including a method statement of how the work is intended to be carried out.

Work must not go ahead until formal written consent has been given by Northern Gas Networks. This will include details of Northern Gas Networks' protection requirements, contact telephone numbers and the emergency telephone number.

On acceptance of Northern Gas Networks' requirements the promoter of the works must give Northern Gas Networks 7 working days notice, or shorter only if agreed with Northern Gas Networks, before commencing work on site.

## 2.2 Within the Highway

Work must be notified to Northern Gas Networks in accordance with the requirements of The New Roads and Street Works Act (NRSWA) and HS(G)47.



The promoter of any works within the highway should provide Northern Gas Networks with details of the proposed works including a method statement of how the work is intended to be carried out. This should be submitted 7 working days before the planned work is to be carried out or shorter, only if agreed with Northern Gas Networks. If similar works are being carried out at a number of locations in close proximity a single method statement should be adequate.

Work should not go ahead until formal written consent has been given by Northern Gas Networks. This will include details of Northern Gas Networks' protection requirements, contact telephone numbers and the emergency telephone number.

## 3. HS&E Considerations

### 3.1 Safe Control of Operations

All working practices must be agreed by Northern Gas Networks prior to work commencing. All personnel working on site must be made aware of the potential hazard of the pipeline and the actions they should follow in case of an emergency. The Site Document Control Form (Appendix A) should be used to record the list of relevant documents that have been provided by Northern Gas Networks to the contractor.

### 3.2 Deep Excavations

Special consideration should be given to the hazards associated with deep excavations. The HSE document CIS08 'Safety in Excavations' provides further guidance and is available on the HSE web site [www.hse.gov.uk](http://www.hse.gov.uk)

### 3.3 Positioning of Plant

Mechanical excavators must not be sited or moved above the pipeline unless written authority has been given by the Northern Gas Networks responsible person.

Mechanical excavators must not dig on one side of the pipeline with the cab of the excavator positioned on the other side.

Mechanical excavators and other traffic must be positioned far enough away from the pipeline trench to prevent trench wall collapse.

### 3.4 General

Activities associated with working in the vicinity of pipelines operating above 7 bar gauge may have impact on the safety of the general public, Northern Gas Networks staff and contractors, and may affect the local environment. Contractors must carry out suitable and adequate risk assessments prior to the commencement of work to ensure that all such issues are properly considered and risks mitigated.

## 4. Pipeline Locating

Where formal consent to work has been given, the third party must give 7 working days notice or shorter, only if agreed with Northern Gas Networks, to ensure that the pipeline is suitably located and marked out by Northern Gas Networks prior to the work commencing.

Prior to work commencing on site the pipeline must be located and pegged or suitably marked out by Northern Gas Networks personnel. In exceptional circumstances with the prior agreement of Northern Gas Networks the locating and marking out of the pipeline could be carried by competent third parties on behalf of the contractor as long as Northern Gas Networks is assured of their competence and the procedures to be followed.

Safe digging practices, in accordance with HSE publication HS(G)47 should be followed as both direct and consequential damage to gas plant can be dangerous both to employees and to the general public.



Previously agreed working practices should be reviewed and revised based on current site conditions. Any changes must be agreed by the Northern Gas Networks responsible person.

The requirements for trial holes to locate the pipeline or determine levels at crossing points must be determined on site by the Northern Gas Networks responsible person.

The excavation of all trial holes must be supervised by the Northern Gas Networks responsible person.

## **5. Slabbing and other protective measures**

No protective measures including the installation of concrete slab protection should be installed over or near to the Northern Gas Networks pipeline without the prior permission of Northern Gas Networks. Northern Gas Networks will need to agree the material, the dimensions and method of installation of the proposed protective measure. The method of installation must be confirmed through the submission of a formal written method statement from the contractor to Northern Gas Networks.

Where permanent slab protection is to be applied over the pipeline Northern Gas Networks will normally carry out a survey (Pearson Survey) of the pipeline to check that there is no existing damage to the coating of the pipeline prior to the slab protection being put in place. Northern Gas Networks must therefore be contacted prior to the laying of any slab protection to arrange for them to carry out this survey.

The safety precautions detailed in Sections 3 and 6 of this document should also be observed during the installation of the pipeline protection.

## **6. Excavation**

### **6.1 In Proximity to a Pipeline in an Easement**

Third parties may excavate, unsupervised, with a powered mechanical excavator no closer than 3 metres to the Northern Gas Networks located pipeline and with hand held power tools no closer than 1.5 metres. Any fitting, attachment or connecting pipework on the pipeline must be exposed by hand. All other excavation shall be by hand.

Consideration may be given to a relaxation of these limits by agreement with the Northern Gas Networks responsible person on site and only whilst he remains on site. In this case a powered mechanical excavator shall not be allowed to excavate closer than 0.6 metres to the nearest part of the pipeline.

Where sufficient depth of cover exists, following evidence from hand dug trial holes, light tracked vehicles may be permitted to strip topsoil to a depth of 0.25 metres, using a toothless bucket.

No topsoil or other materials should be stored within the easement without the written permission of Northern Gas Networks.

No topsoil or materials shall be stored over the pipeline.

No fires shall be allowed in the easement strip or close to above ground gas installations.

After the completion of the work the level of cover over the pipeline should be the same as that prior to work commencing unless agreed otherwise with the Northern Gas Networks responsible person.

No new service shall be laid parallel to the pipeline within the easement. In special circumstances, and only with formal written agreement from Northern Gas Networks, this may be relaxed for short excursions where the service shall be laid no closer than 0.6 metres to the side of the pipeline.

Where work is being carried out parallel to the pipeline within or just alongside the easement a post and wire fence must be erected as a protective barrier between the works and the pipeline.

## 6.2 In Proximity to a Pipeline in the Highway

Removal of the bituminous or concrete highway surface layer by mechanical means is permitted to depth of 0.3 metres, although the use of chain trenchers to do this shall not be permitted within 3 metres of the pipeline. The Northern Gas Networks responsible person may want to monitor this work.



Where the bituminous or concrete highway surface layer extends below 0.3 metres deep it should only be removed by handheld power assisted tools under the supervision of the Northern Gas Networks responsible person. In exceptional circumstances, and following a risk assessment, these conditions may be relaxed by the Northern Gas Networks responsible person.



Third parties may excavate, unsupervised, with a powered mechanical excavator no closer than 3 metres to the located Northern Gas Networks pipeline and with hand held power tools no closer than 1.5 metres. Any fitting or attachment must be exposed by hand.

In special circumstances consideration may be given to a relaxation of these rules by agreement with the Northern Gas Networks responsible person on site and only whilst he remains on site.

The use of 'No dig' techniques is covered in Section 8.1.

Any new service running parallel to the pipeline should be laid no closer than 0.6 metres to the side of the pipeline (see Section 6.4).

### 6.3 Crossing Over a Pipeline

Where a new service is to cross over the pipeline a clearance distance of 0.6 metres between the crown of the pipeline and underside of the service must be maintained. If this cannot be achieved the service must cross below the pipeline with a clearance distance of 0.6 metres.

In special circumstances this distance may be reduced at the discretion of the Northern Gas Networks responsible person on site.

### 6.4 Crossing Below a Pipeline

Where a service is to cross below the pipeline a clearance distance of 0.6 metres between the crown of the service and underside of the pipeline must be maintained.

The exposed pipeline should be suitably supported. Where lengths of pipeline greater than 5 metres are to be exposed and unsupported the Northern Gas Networks responsible person shall be consulted and a stress analysis shall be required in order to establish support requirements. The stress analysis should be carried out by individuals with demonstrated expertise in this area, Northern Gas Networks can be consulted for advice on suitable specialists. Northern Gas Networks may request a copy of the stress analysis to confirm its adequacy. Such supports must be removed prior to backfilling.

The exposed pipeline must be protected by matting and suitable timber cladding.

## 6.5 Cathodic Protection

Cathodic Protection is applied to all of Northern Gas Networks' above 7 bar gauge buried steel pipelines and is a method of protecting pipelines with damaged coatings from corrosion by maintaining an electrical potential difference between the pipeline and anodes placed at strategic points along the pipeline.

Where a new service is to be laid and similarly protected, Northern Gas Networks will undertake interference tests to determine whether the new service is interfering with the cathodic protection of the Northern Gas Networks pipeline.

Should any cathodic protection posts or associated apparatus need moving to facilitate third party works reasonable notice, typically 7 working days, shall be given to Northern Gas Networks. Northern Gas Networks will undertake this work and any associated costs will be borne by the third party.

## 7. Construction Traffic

Where existing roads cannot be used construction traffic shall **ONLY** cross the pipeline at previously agreed locations. All crossing points will be fenced on both sides with a post and wire fence and with the fence returned along the easement for a distance of 6 metres. The pipeline shall be protected at the crossing points by temporary rafts of either sleeper or reinforced concrete construction, constructed at ground level. The Northern Gas Networks responsible person will review ground conditions, vehicle types and crossing frequencies to determine the type and construction of the raft required.



## 8. Specific Activities

This section details the precautions that need to be taken when carrying out certain prescribed activities in the vicinity of the pipeline. Consult Northern Gas Networks if you are intending to undertake one of the listed prescribed activities and/or you require further advice on whether the work that you are intending to undertake has the potential to affect the pipeline.

## 8.1 No-Dig Techniques

Where the contractor intends using no dig techniques then a formal method statement must be produced for all work that would encroach (either above or below ground) within the pipeline easement. This method statement must be formally agreed with Northern Gas Networks prior to the commencement of the work. Northern Gas Networks may wish to be present when the work is being carried out and must therefore be given adequate advance notice before the commencement of the work.

## 8.2 Increase in Cover

A pipeline integrity assessment must be provided for situations involving a final cover depth exceeding 2.5 metres. This assessment should take due account of both soil 'dead' loading and ground settlement due to earthworks. Embankment design and construction over pipelines must give consideration to prevention of any instability. Expert advice may need to be sought which can be arranged through Northern Gas Networks.

## 8.3 Piling

No piling will be allowed within 15 metres of a pipeline without an assessment of the vibration levels at the pipeline. The peak particle velocity at the pipeline should be limited to a maximum level of 75 mm/sec. Where the peak particle velocity is predicted to exceed 50 mm/sec, the ground vibration shall be monitored by the contractor and the results available to the Northern Gas Networks responsible person at their request. A typical monitoring device would be the Vibrock V801 seismograph and tri-axial geophone sensor.

Where ground conditions are of submerged granular deposits of silt and sand, an assessment of the effect of vibration on settlement and liquefaction at the pipeline shall be made.

Expert advice may need to be sought which can be arranged through Northern Gas Networks.

## 8.4 Demolition

No demolition is allowed within 150 metres of a pipeline without an assessment of the vibration levels at the pipeline. The peak particle velocity at the pipeline must be limited to a maximum level of 75 mm/sec. Where the peak particle velocity is predicted to exceed 50 mm/sec, the ground vibration shall be monitored by the contractor and the results available to the Northern Gas Networks responsible person at their request.

Where ground conditions are submerged granular deposits of silt or sand, an assessment of the effect of vibration on settlement and liquefaction at the pipeline shall be made.

Expert advice may need to be sought which can be arranged through Northern Gas Networks.

## 8.5 Blasting

No blasting is allowed within 250 metres of a pipeline without an assessment of the vibration levels at the pipeline. The peak particle velocity at the pipeline must be limited to a maximum level of 75 mm/sec. Where the peak particle velocity is predicted to exceed 50 mm/sec, the ground vibration must be monitored by the contractor and the results available to the Northern Gas Networks responsible person at their request.

Where ground conditions are of submerged granular deposits of silt or sand, an assessment of the effect of vibration on settlement and liquefaction at the pipeline shall be made.

Expert advice may need to be sought which can be arranged through Northern Gas Networks.

## 8.6 Surface Mineral Extraction

An assessment must be carried out on the effect of surface mineral extraction activity within 100 metres of a pipeline. Consideration should also be given to extraction around groundbeds and other pipeline associated plant and equipment.



Where the mineral extraction extends up to the pipeline easement, a stable slope angle and stand-off distance between the pipeline and slope crest must be determined by Northern Gas Networks. The easement strip should be clearly marked by a suitable permanent boundary such as a post and wire fence, and where appropriate, slope indicator markers shall be erected to facilitate the verification of the recommended slope angle as the slope is formed, by the contractor. The pipeline easement and slope needs to be inspected periodically to identify any signs of developing instability. This may include any change of slope profile including bulging, the development of tension cracks on the slope or easement, or any changes in drainage around the slope. The results of each inspection should be recorded.

Where surface mineral extraction activities are planned within 100 metres of the pipeline but do not extend up to the pipeline easement boundary, an assessment, by Northern Gas Networks must be made on whether the planned activity could promote instability in the vicinity of the pipeline. This may occur where the pipeline is routed across a natural slope or the excavation is deep. A significant cause of this problem is where the groundwater profile is affected by changes in drainage or the development of lagoons.

Where the extraction technique involves explosives the provisions of section 8.5 apply.

## 8.7 Deep Mining

Pipelines routed within 1 km of active deep mining may be affected by subsidence resulting from mineral extraction. The determination of protective or remedial measures will normally require expert assistance, which can be arranged through Northern Gas Networks.

## 8.8 Landfilling

The creation of slopes outside of the pipeline easements may promote instability within the vicinity of the pipeline. An assessment shall therefore be carried out, by Northern Gas Networks on the effect of any landfilling activity within 100 metres of a pipeline. The assessment is particularly important if landfilling operations are taking place on a slope in which the pipeline is routed.

## 8.9 Pressure Testing

Hydraulic pressure testing will not be permitted within 8 metres of the pipeline unless suitable precautions have been taken against the effects of a burst. These precautions should include limiting of the design factor to 0.3 for the third party pipeline for a distance of 6 metres either side of the Northern Gas Networks pipeline, and the use of mill tested pipe or sleeving.

## 8.10 Seismic Surveys

Northern Gas Networks must be advised of any seismic surveying work in the vicinity of pipeline that will result in Northern Gas Networks' pipeline being subjected to peak particle velocities in excess of 50 mm/sec. The ground vibration near to the pipeline shall also be monitored by the contractor whilst the survey work is being carried out. Where the peak particle velocity is predicted to exceed 50 mm/sec, the ground vibration shall be monitored by the contractor and the results available to the Northern Gas Networks responsible person at their request.

## 8.11 Hot Work

The Northern Gas Networks responsible person on site will supervise all welding, burning or other 'hot work' that takes place within the easement.

# 9. Backfilling

Third parties must provide Northern Gas Networks with 48 hours notice, or shorter notice only if agreed with Northern Gas Networks, of the intent to backfill over, under or alongside the pipeline. This requirement should also apply to any backfilling operations alongside the pipeline within three metres of the pipeline. Any damage to the pipeline or coating shall be reported to the Northern Gas Networks responsible person in order that damage can be assessed and repairs can be carried out.

**Minor damage to pipe coating and test leads shall be repaired by Northern Gas Networks free of charge.**

No backfilling should be undertaken without Northern Gas Networks' agreement to proceed. The Northern Gas Networks responsible person will stipulate the necessary consolidation requirements.



If the pipeline has been backfilled without the knowledge of the Northern Gas Networks' responsible person then he will require the material to be re-excavated in order to enable the condition of the pipeline coating to be confirmed.

## 10. Action in the case of damage to the pipeline

If the Northern Gas Networks pipeline is damaged, even slightly, and even if no gas leak has occurred then the following precautions must be taken immediately:

- Shut down all plant and machinery and extinguish any potential sources of ignition.
- Evacuate all personnel from the vicinity of the pipeline.
- Notify Northern Gas Networks using the free 24 hour emergency telephone number 0800 111 999\*
- Notify the Northern Gas Networks responsible person or his office immediately using the contact telephone number provided.
- Ensure no one approaches the pipeline.
- Do not try to stop any leaking gas.

## 11. References

NRSWA	New Roads & Street Works Act
HS(G)47	Avoiding Danger from Underground Services
IGE/SR/18	Safe Working Practices to Ensure the Integrity of Gas Pipelines and Associated Installations
CIS08	Safety in Excavations (HSE document)



## 12. Glossary of terms

<b>Contractor</b>	The person, firm or company with whom Northern Gas Networks enters into a contract to which this specification applies, including the contractor's personal representatives, successors and permitted assigns.
<b>Deed of Servitude</b>	In Scotland a 'Deed of Servitude' is considered equivalent to 'easement' in this document.
<b>Easement</b>	Easements are negotiated legal entitlements between Northern Gas Networks and landowner and allow Northern Gas Networks to lay, operate and maintain pipelines within the easement strip. Easement strips may vary in width typically between 6 and 25 metres depending on the diameter and pressure of the pipeline. Consult Northern Gas Networks for details of the extent of the easement strip where work is intended.
<b>Liquefaction</b>	Liquefaction is a phenomenon in which the strength and stiffness of the soil is reduced by earthquake shaking or other rapid loading. Liquefaction occurs in saturated soils, that is, soils in which the space between individual particles is completely filled with water. When liquefaction occurs, the strength of the soil decreases and the ability of the soil to support pipelines or other components is reduced.
<b>Pearson survey</b>	A survey used for locating coating defects on buried pipeline services.
<b>Promoter of new works</b>	The person or persons, firm, company or authority for whom new services, structures or other works in the vicinity of existing Northern Gas Networks pipelines and associated installations operating above 7 bar gauge are being undertaken.
<b>Northern Gas Networks responsible person</b>	The person or persons appointed by Northern Gas Networks with the competencies required to act as the Northern Gas Networks representative for the purpose of the managing the particular activity.
<b>Wayleave</b>	General term which is considered equivalent to 'easement' in this document.



## APPENDIX A

SITE DOCUMENT CONTROL FORM – SAMPLE

Emergency Telephone No. **0800 111 999\***

### **SITE DOCUMENT CONTROL FORM**

**Activity Reference:**

**Activity Location:**

**Site Manager:** (name and telephone number)

**Northern Gas Networks Contact:** (name and telephone number)

**The following documents were issued to**

(individual's name) **of** (company name and address)

**by** (Northern Gas Networks representative) **on** (date)

**Documents:**

(List of documents)

**Signed:** (by the recipient)

**Date of signature:**

**SITE DOCUMENT CONTROL FORM**

Emergency Telephone No. **0800 111 999\***

**SITE DOCUMENT CONTROL FORM**

**Activity Reference:**

**Activity Location:**

**Site Manager:**

**Northern Gas Networks Contact:**

The following documents were issued to  
of

by on

**Documents:**

**Signed:**

**Date of signature:**

Emergency Telephone Number for pipeline  
damage or gas escapes

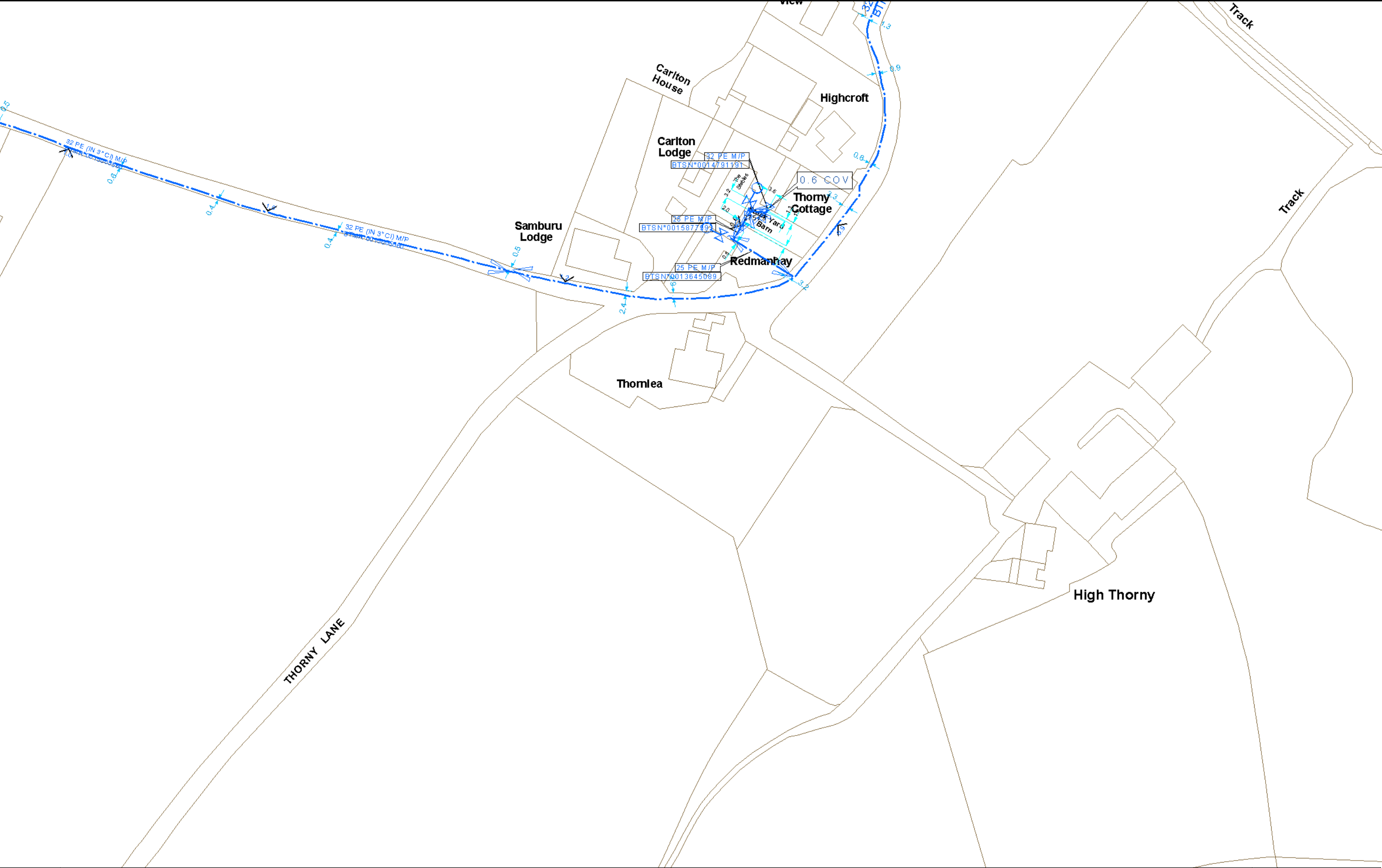
0800 111 999\*

Northern Gas Networks contact details:

\*All calls are recorded and may be monitored

G2288

Standards Section  
Northern Gas Networks Limited  
Thorpe Park  
1100 Century Way  
Leeds  
LS15 8TU



<b>Title:</b>			
<b>Scale:</b>		1:1250	
<b>User ID:</b>			
<b>Date:</b>		09/07/2021	
<b>Grid Ref:</b>		301682,509231	
<b>Internal Use Only</b>			
<div>Some examples of Plant Items: Valve:  Depth of Cover:  Syphon:  Diameter Change:  Material Change: </div>		<div>1:500:  1:1250:  1:2500:  Scale in metres</div>	<div>This plan shows those pipes owned by Northern Gas Networks or the relevant Gas Distribution Network in their roles as Licensed Gas Transporters (GT). Gas pipes owned by other GTs, or otherwise privately owned, may be present in this area. Information with regard to such pipes should be obtained from the relevant owners. The information shown on this plan is given without warranty, the accuracy thereof cannot be guaranteed. Service pipes, valves, syphons, stub connections, etc. are not shown but their presence should be anticipated. No liability of any kind whatsoever is accepted by Northern Gas Networks, the relevant Gas Distribution Network, or their agents, servants or contractors for any error or omission. Safe digging practices, in accordance with HS(G)47, must be used to verify and establish the actual position of mains, pipes, services and other apparatus on site before any mechanical plant is used. It is your responsibility to ensure that this information is provided to all persons (either direct labour or contractors) working for you on or near gas apparatus. The information included on this plan should not be referred to beyond a period of 28 days from the date of issue.</div> <div> This plan is reproduced or based on the OS map by Northern Gas Networks, with the sanction of the controller of HM Stationary Office. Crown Copyright Reserved.</div>



Water for the North West

**Centara Bureau Services**

Office 10  
Ripley Drive, Normanton Business Park  
Normanton, West Yorkshire  
WF6 1QT

FAO:

**How to contact us:**

**United Utilities Water Limited  
Property Searches  
Haweswater House  
Lingley Mere Business Park  
Great Sankey  
Warrington  
WA5 3LP**

**Telephone: 0370 7510101**

**E-mail: [propertysearches@uuplc.co.uk](mailto:propertysearches@uuplc.co.uk)**

**Your Ref: CEN20928  
Our Ref: UUPS-ORD-306072  
Date: 15/07/2021**

**Dear Sirs**

**Location: CEN20928**

I acknowledge with thanks your request dated 09/07/2021 for information on the location of our services.

Please find enclosed plans showing the approximate position of United Utilities' apparatus known to be in the vicinity of this site.

The enclosed plans are being provided to you subject to the United Utilities terms and conditions for both the wastewater and water distribution plans which are shown attached.

If you are planning works anywhere in the North West, please read United Utilities' access statement before you start work to check how it will affect our network. <http://www.unitedutilities.com/work-near-asset.aspx>.

I trust the above meets with your requirements and look forward to hearing from you should you need anything further.

If you have any queries regarding this matter please [contact us](#).

Yours Faithfully,

Karen McCormack  
Property Searches Manager

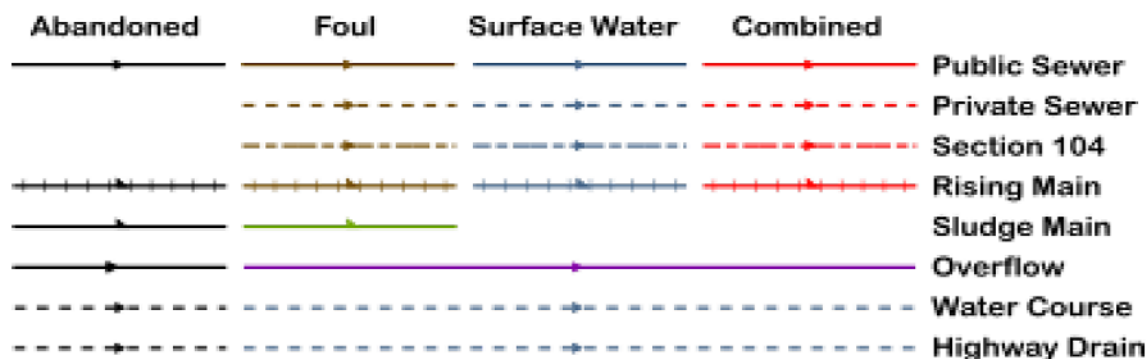
## **TERMS AND CONDITIONS - WASTEWATER AND WATER DISTRIBUTION PLANS**

These provisions apply to the public sewerage, water distribution and telemetry systems (including sewers which are the subject of an agreement under Section 104 of the Water Industry Act 1991 and mains installed in accordance with the agreement for the self construction of water mains) (UUWL apparatus) of United Utilities Water Limited "(UUWL)".

### **TERMS AND CONDITIONS:**

- This Map and any information supplied with it is issued subject to the provisions contained below, to the exclusion of all others and no party relies upon any representation, warranty, collateral contract or other assurance of any person (whether party to this agreement or not) that is not set out in this agreement or the documents referred to in it.
- This Map and any information supplied with it is provided for general guidance only and no representation, undertaking or warranty as to its accuracy, completeness or being up to date is given or implied.
- In particular, the position and depth of any UUWL apparatus shown on the Map are approximate only. UUWL strongly recommends that a comprehensive survey is undertaken in addition to reviewing this Map to determine and ensure the precise location of any UUWL apparatus. The exact location, positions and depths should be obtained by excavation trial holes.
- The location and position of private drains, private sewers and service pipes to properties are not normally shown on this Map but their presence must be anticipated and accounted for and you are strongly advised to carry out your own further enquiries and investigations in order to locate the same.
- The position and depth of UUWL apparatus is subject to change and therefore this Map is issued subject to any removal or change in location of the same. The onus is entirely upon you to confirm whether any changes to the Map have been made subsequent to issue and prior to any works being carried out.
- This Map and any information shown on it or provided with it must not be relied upon in the event of any development, construction or other works (including but not limited to any excavations) in the vicinity of UUWL apparatus or for the purpose of determining the suitability of a point of connection to the sewerage or other distribution systems.
- No person or legal entity, including any company shall be relieved from any liability howsoever and whensoever arising for any damage caused to UUWL apparatus by reason of the actual position and/or depths of UUWL apparatus being different from those shown on the Map and any information supplied with it.
- If any provision contained herein is or becomes legally invalid or unenforceable, it will be taken to be severed from the remaining provisions which shall be unaffected and continue in full force and affect.
- This agreement shall be governed by English law and all parties submit to the exclusive jurisdiction of the English courts, save that nothing will prevent UUWL from bringing proceedings in any other competent jurisdiction, whether concurrently or otherwise.

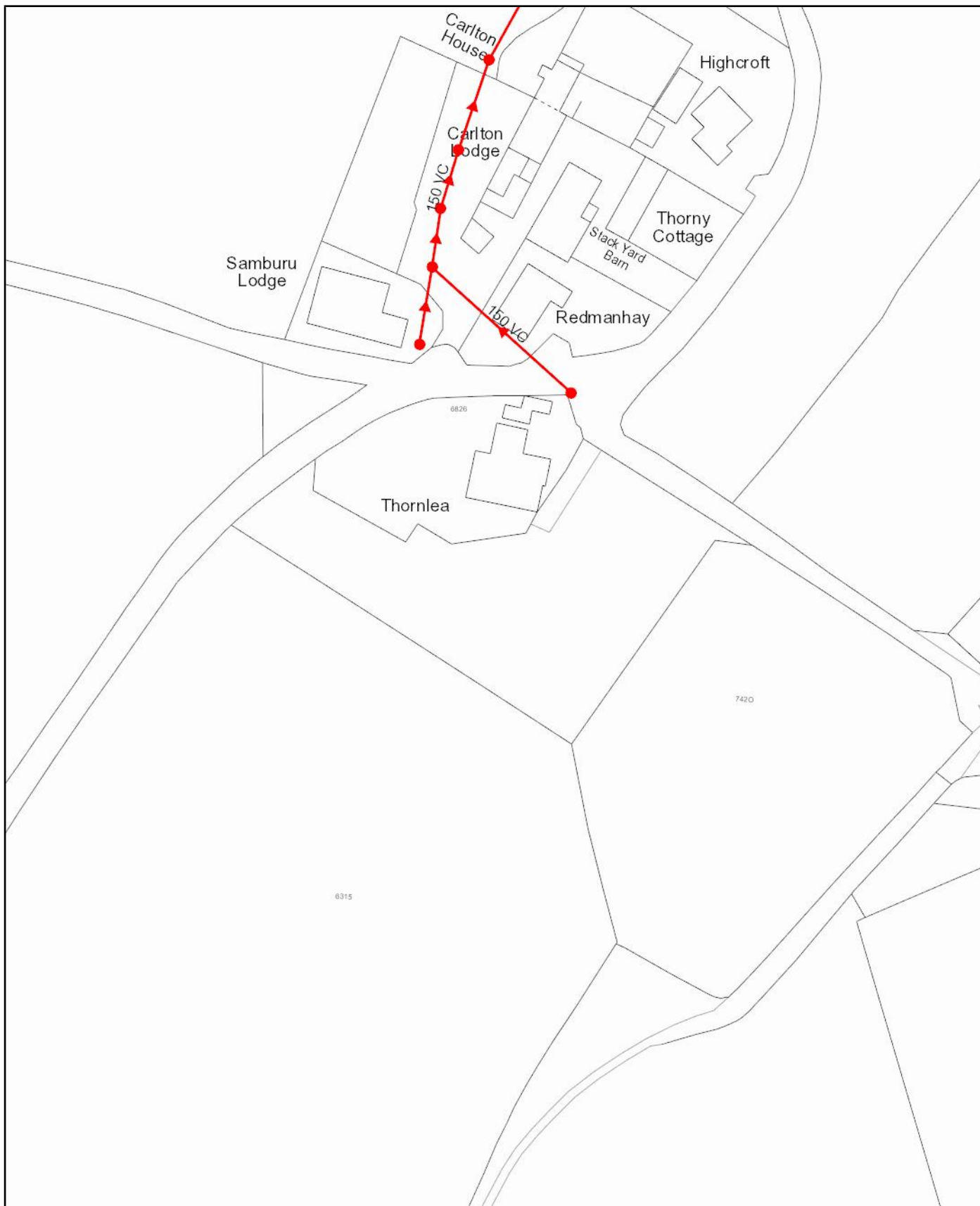
## Wastewater Symbolology



All point assets follow the standard colour convention: **red** – combined **brown** - foul  
**blue** – surface water **purple** - overflow

Manhole	Side Entry Manhole
Head of System	Outfall
Extent of Survey	Screen Chamber
Rodding Eye	Inspection Chamber
Inlet	Bifurcation Chamber
Discharge Point	Lamp Hole
Vortex	T Junction / Saddle
Penstock	Catchpit
Washout Chamber	Valve Chamber
Valve	Vent Column
Air Valve	Vortex Chamber
Non Return Valve	Penstock Chamber
Soakaway	Network Storage Tank
Gully	Sewer Overflow
Cascade	Ww Treatment Works
Flow Meter	Ww Pumping Station
Hatch Box	Septic Tank
Oil Interceptor	Control Kiosk
Summit	
Drop Shaft	Change of Characteristic
Orifice Plate	





Scale: 1:1250  
Date: 15/07/2021

## SEWER RECORDS



Address or Site Reference: CEN20928  
Printed by: Property Searches

The position of the underground apparatus shown on this plan is approximate only and is given in accordance with the best information currently available. United Utilities Water will not accept liability for any loss or damage caused by the actual position being different from those shown.

Crown copyright and database rights 2017 Ordnance Survey 100022432. Unauthorised reproduction will infringe these copyrights.

## Clean Water Symbolology

Proposed	Abandoned	Live	
			Distribution Main
			Trunk Main
			Comms Pipe
			Private Pipe
			Concessionary Service
			Raw Water
			LDTM Raw Water
			LDTM Treated Water
			Air Valve
			AC Valve, open
			AC Valve, closed
			CC Valve, open
			CC Valve, closed
			Non Return Valve
			Pressure Management Valve
			OMS Valve
			Stop Tap
			Flow Meter
			Domestic Meter
			Commercial Meter
			Pump
			Hydrant
			Fire Hydrant
			Anode
			Chlorination Point
			De-chlorination Point
			Strainer Point
			Access Point
			Hatch Box
			IP Point
			Sampling Station
			Logger Box
			Bore Hole
			Inlet Point
			Bulk Supply Point
			End Cap
			Site Termination
			Change of Characteristic
			Condition Report
			<u>Property Types</u>
			Water Tower
			Valve House
			Booster Pumping Station
			Intake Pumping Station
			Water Treatment Works
			Supply Reservoir
			Service Reservoir
			Impounding Reservoir
			Pipe Bridge

Symbology for proposed assets is the same as above, but shown in **green**  
 Symbology for abandoned assets is the same as above, but shown in **black**



Scale: 1:1250  
Date: 15/07/2021

## WATER MAINS RECORDS

Address or Site Reference: CEN20928  
Printed by: Property Searches

 **United  
Utilities**  
Water for the North West

The position of the underground apparatus shown on this plan is approximate only and is given in accordance with the best information currently available. United Utilities Water will not accept liability for any loss or damage caused by the actual position being different from those shown.

Crown copyright and database rights 2017 Ordnance Survey 100022432. Unauthorised reproduction will infringe these copyrights.

## Openreach Plant Maps Requested

NewSite Office (addresses can be located from [here](#))  
National Freephone: 0800 616 866

Dear Sir/Madam,

Thank you for your request to: [www.openreach.co.uk/networkinfo/](http://www.openreach.co.uk/networkinfo/)

You have downloaded copies of our drawings marked up to show the approximate location of Openreach apparatus, which is present in the immediate vicinity of your works. It is intended for general guidance only. No guarantee is given of its accuracy. It should not be relied upon in the event of excavations or other works made near to Openreach apparatus, which may, exist at various depths and may deviate, from the marked route.

To avoid damage it is recommended that mechanical excavators or borers are not used within 600mm of Openreach plant. Please ensure that our equipment is not enclosed, blocked, covered or otherwise obstructed by your plant. In the event of clearance not being adequate we anticipate that your plant is either resited, or an order is placed with Openreach for rearrangements of its plant. If there are any difficulties with the Map please ring 0800 616866.

---

Please contact our Network Protection Service if required by dialling 0800 917 3993 or by Email on [DBYD@openreach.co.uk](mailto:DBYD@openreach.co.uk) giving seven days notice of your commencement date. This will provide you with on-site advice and a check of location for any Openreach apparatus.

---

Further to this, I hope the following points will assist you at the new development: -

Openreach has a licence obligation to provide service to any end customer requiring a connection. A Developer would not normally be charged for provision of service, our standard connection charges would apply to the end user when orders are placed with the communication provider of choice. However, should a Developer insist on an underground service in an area where Openreach plant is provided overhead, charges may be incurred.

When the Developer has obtained contract and planning permission Openreach would request a 'Clean', scaled Site Layout, Location Map and a covering letter be sent to the relevant newSite Office. We would particularly request that you give details of your programmed site start date and likely first occupancy date where possible. To obtain contact details of the newSite office covering the development area click on the URL below.

<http://www.openreach.co.uk/orpg/networkinfo/developnetwork/regionalcontacts.do>

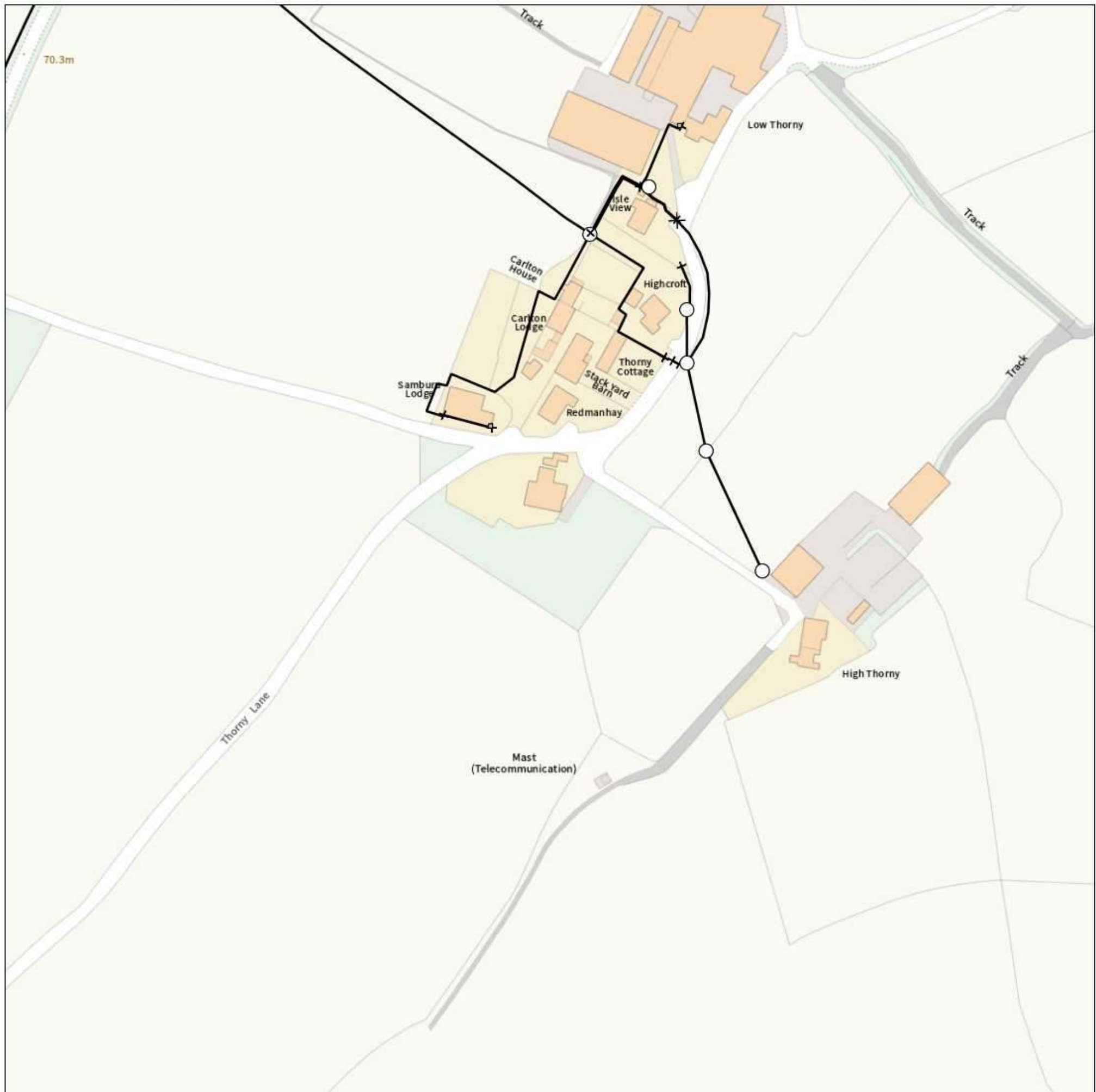
Where a development affects existing Openreach apparatus in the public highway, the cost of any necessary protection or diversionary works must be borne by the Developer. In this case where a budget estimate is required a Site Plan, Location Map and a covering letter should be forwarded to the Repayments Project Office. Please visit <http://www.openreach.co.uk/orpg/networkinfo/alternetwork/alterationcontacts.do> for contact details of the Repayments Office covering the development area.

Yours faithfully,

## Openreach newSites



# Maps by email Plant Information Reply



## IMPORTANT WARNING

Information regarding the location of BT apparatus is given for your assistance and is intended for general guidance only. No guarantee is given of its accuracy. It should not be relied upon in the event of excavations or other works being made near to BT apparatus which may exist at various depths and may deviate from the marked route.



**openreach**

### CLICK BEFORE YOU DIG

FOR PROFESSIONAL FREE ON SITE ASSISTANCE PRIOR TO COMMENCEMENT OF EXCAVATION WORKS INCLUDING LOCATE AND MARKING SERVICE

email [cbyd@openreach.co.uk](mailto:cbyd@openreach.co.uk)

ADVANCE NOTICE REQUIRED  
(Office hours: Monday - Friday 08.00 to 17.00)  
[www.openreach.co.uk/cbyd](http://www.openreach.co.uk/cbyd)

### Accidents happen

If you do damage any Openreach equipment please let us know by calling 0800 023 2023 (opt 1 + opt 1) and we can get it fixed ASAP

## KEY TO BT SYMBOLS

		Change Of State	+	Hatchings	
	<i>Planned</i>	<i>Live</i>	×	Built	
PCP			Split Coupling	▲	Planned
Pole			Duct Tee		Inferred
Box			Building		Duct
Manhole			Kiosk		
Cabinet			Other proposed plant is shown using dashed lines. BT Symbols not listed above may be disregarded. Existing BT Plant may not be recorded. Information valid at time of preparation. Maps are only valid for 90 days after the date of publication.		
	<i>Pending Add</i>	<i>In Place</i>	<i>Pending Remove</i>	<i>Not In Use</i>	
Power Cable					
Power Duct				N/A	

BT Ref : IRV10141V

Map Reference : (centre) NY0168509231

Easting/Northing : (centre) 301685,509231

Issued : 09/07/2021 10:14:26

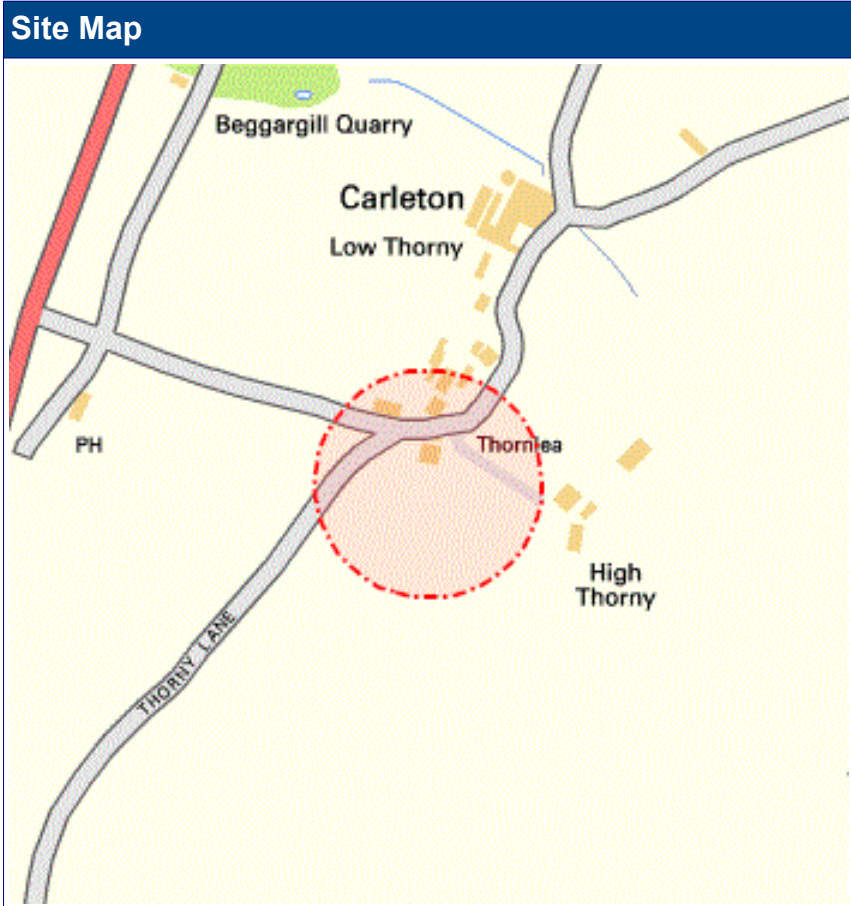
Reproduced from the Ordnance Survey map by BT  
by permission of Ordnance Survey on behalf of the  
Controller of Her Majesty's Stationary Office  
(C) Crown Copyright British Telecommunications plc 100028040

**WARNING: IF PLANNED WORKS FALL INSIDE HATCHED AREA IT IS ESSENTIAL BEFORE PROCEEDING THAT YOU CONTACT THE NATIONAL NOTICE HANDLING CENTRE. PLEASE SEND E-MAIL TO: [nnhc@openreach.co.uk](mailto:nnhc@openreach.co.uk)**

Enquirer			
Name	Miss Shauna Ross	Phone	01924 220726
Company	Centara	Mobile	Not Supplied
Address	Office 10, Normanton Business Park Ripley Drive Normanton West Yorkshire WF6 1QT		
Email			

Enquiry Details			
Scheme/Reference	cen20928		
Enquiry type	Planned Works	Work category	Utility Works
Start date	10/07/2021	Work type	Multiple excavations site
End date	17/07/2021	Site size	190 metres diameter
Searched location	XY= 301685, 509231	Work type buffer*	25 metres
Confirmed location	301685 509231		
Site Contact Name	Not Supplied	Site Phone No	Not Supplied
Description of Works			

\* The WORK TYPE BUFFER is a distance added to your search area based on the Work type you have chosen.



### Asset Owners

**Terms and Conditions.** Please note that this enquiry is subject always to our standard terms and conditions available at [www.lineasearchbeforeudig.co.uk](http://www.lineasearchbeforeudig.co.uk) ("Terms of Use") and the disclaimer at the end of this document. Please note that in the event of any conflict or ambiguity between the terms of this Enquiry Confirmation and the Terms of Use, the Terms of Use shall take precedence.

**Notes.** Please ensure your contact details are correct and up to date on the system in case the LSBUD Members need to contact you.

**Validity and search criteria.** The results of this enquiry are based on the confirmed information you entered and are valid only as at the date of the enquiry. It is your responsibility to ensure that the Enquiry Details are correct, and LineasearchbeforeUdig accepts no responsibility for any errors or omissions in the Enquiry Details or any consequences thereof. LSBUD Members update their asset information on a regular basis so you are advised to consider this when undertaking any works. It is your responsibility to choose the period of time after which you need to resubmit any enquiry but the maximum time (after which your enquiry will no longer be dealt with by the LSBUD Helpdesk and LSBUD Members) is 28 days. If any details of the enquiry change, particularly including, but not limited to, the location of the work, then a further enquiry must be made.

**Asset Owners & Responses.** Please note the enquiry results include the following:

1. "LSBUD Members" who are asset owners who have registered their assets on the LSBUD service.
2. "Non LSBUD Members" are asset owners who have not registered their assets on the LSBUD service but LSBUD is aware of their existence. Please note that there could be other asset owners within your search area.

Below are three lists of asset owners:

1. LSBUD Members who have assets registered within your search area. ("Affected")
  - a. These LSBUD Members will either:
    - i. Ask for further information ("Email Additional Info" noted in status). The additional information includes: Site contact name and number, Location plan, Detailed plan (minimum scale 1:2500), Cross sectional drawings (if available), Work Specification.
    - ii. Respond directly to you ("Await Response"). In this response they may either send plans directly to you or ask for further information before being able to do so, particularly if any payments or authorisations are required.
2. LSBUD Members who do not have assets registered within your search area. ("Not Affected")
3. Non LSBUD Members who may have assets within your search area. Please note that this list is not exhaustive and all details are provided as a guide only. It is your responsibility to identify and consult with all asset owners before proceeding.

**National Grid.** Please note that the LSBUD service only contains information on National Grid's Gas above 7 bar asset, all National Grid Electricity Transmission assets and National Grid's Gas Distribution Limited above 2 bar asset.

For National Grid Gas Distribution Ltd below 2 bar asset information please go to [www.beforeyoudig.nationalgrid.com](http://www.beforeyoudig.nationalgrid.com)



**LSBUD Members who have assets registered on the LSBUD service within the vicinity of your search area.**

### List of affected LSBUD members

Asset Owner	Phone/Email	Emergency Only	Status
Electricity North West Limited	08001954141	08001954141	Await response

**LSBUD Members who do not have assets registered on the LSBUD service within the vicinity of your search area. Please be aware that LSBUD Members make regular changes to their assets and this list may vary for new enquiries in the same area.**

### List of not affected LSBUD members

AWE Pipeline	Balfour Beatty Investments Limited	BOC Limited (A Member of the Linde Group)
Box Broadband	BP Exploration Operating Company Limited	BPA
Carrington Gas Pipeline	CATS Pipeline c/o Wood Group PSN	Cemex
Centrica Storage Ltd	CNG Services Ltd	Concept Solutions People Ltd
ConocoPhillips (UK) Teesside Operator Ltd	Diamond Transmission Corporation	DIO (MOD Abandoned Pipelines)
DIO (MOD Live Pipelines)	E.ON UK CHP Limited	EirGrid
ENI & Himor c/o Penspen Ltd	EnQuest NNS Limited	EP Langage Limited
ESP Utilities Group	ESSAR	Esso Petroleum Company Limited
Exolum Pipeline System	Fulcrum Pipelines Limited	Gamma
Gas Networks Ireland (UK)	Gateshead Energy Company	Gigaclear Ltd
Gtt	Harbour Energy	Heathrow Airport LTD
Humbly Grove Energy	IGas Energy	INEOS FPS Pipelines
INEOS Manufacturing (Scotland and TSEP)	INOVYN ChlorVinyls Limited	INOVYN Enterprises Limited
Intergen (Coryton Energy or Spalding Energy)	Jurassic Fibre Ltd	Last Mile
Mainline Pipelines Limited	Manchester Jetline Limited	Manx Cable Company
Marchwood Power Ltd (Gas Pipeline)	Melbourn Solar Limited	Murphy Utility Assets
National Grid Gas (Above 7 bar), National Grid Gas Distribution Limited (Above 2 bar) and National Grid Electricity Transmission	Neos Networks	Northumbrian Water Group
NPower CHP Pipelines	NTT Global Data Centers EMEA UK Ltd	NYnet Ltd
Oikos Storage Limited	Ørsted	Perenco UK Limited (Purbeck Southampton Pipeline)
Petroineos	Phillips 66	Portsmouth Water
Premier Transmission Ltd (SNIP)	Redundant Pipelines - LPDA	RWE - Great Yarmouth Pipeline (Bacton to Great Yarmouth Power Station)
RWEnpower (Little Barford and South Haven)	SABIC UK Petrochemicals	Scottish and Southern Electricity Networks
Scottish Power Generation	Seabank Power Ltd	SES Water
SGN	Shell	Shell NOP
SSE Generation Ltd	SSE Transmission	SSE Utility Solutions Limited
Tata Communications (c/o JSM Construction Ltd)	Total Colnbrook Pipelines	Total Finaline Pipelines
Transmission Capital	UK Power Networks	Uniper UK Ltd



University of Cambridge Granta Backbone  
Network

Vattenfall

Veolia ES SELCHP Limited

Veolia ES Sheffield Ltd

VPI Power Limited

Wales and West Utilities

West of Duddon Sands Transmission Ltd

Western Power Distribution

Westminster City Council

Zayo Group UK Ltd c/o JSM Group Ltd

The following Non-LSBUD Members may have assets in your search area. It is YOUR RESPONSIBILITY to contact them before proceeding. Please be aware this list is not exhaustive and it is your responsibility to identify and contact all asset owners within your search area.

Non-LSBUD members (Asset owners not registered on LSBUD)			
Asset Owner	Preferred contact method	Phone	Status
BT	<a href="https://www.swns.bt.com/pls/mbe/welcome.home">https://www.swns.bt.com/pls/mbe/welcome.home</a>	08000232023	Not Notified
CenturyLink Communications UK Limited	<a href="mailto:plantenquiries@instalcom.co.uk">plantenquiries@instalcom.co.uk</a>	02087314613	Not Notified
CityFibre	<a href="mailto:asset.team@cityfibre.com">asset.team@cityfibre.com</a>	033 3150 7282	Not Notified
Colt	<a href="mailto:plantenquiries@catelecomuk.com">plantenquiries@catelecomuk.com</a>	01227768427	Not Notified
Copeland District (Street Lights)	<a href="mailto:info@copeland.gov.uk">info@copeland.gov.uk</a>	08450548600	Not Notified
ENGIE	<a href="mailto:nrswa.uk@engie.com">nrswa.uk@engie.com</a>	01293 549944	Not Notified
GTC	<a href="https://pe.gtc-uk.co.uk/PlantEnqMembership">https://pe.gtc-uk.co.uk/PlantEnqMembership</a>	01359240363	Not Notified
Mobile Broadband Network Limited	<a href="mailto:mbnl.plant.enquiries@turntown.com">mbnl.plant.enquiries@turntown.com</a>	01212 621 100	Not Notified
Northern Gas Networks	<a href="mailto:plantprotection@northerngas.co.uk">plantprotection@northerngas.co.uk</a>	01915014349	Not Notified
Sota	<a href="mailto:SOTA.plantenquiries@instalcom.co.uk">SOTA.plantenquiries@instalcom.co.uk</a>		Not Notified
United Utilities	<a href="mailto:WastewaterDeveloperServices@uuplc.co.uk">WastewaterDeveloperServices@uuplc.co.uk</a>	08707510101	Not Notified
Utility assets Ltd	<a href="mailto:enquiries@utilityassets.co.uk">enquiries@utilityassets.co.uk</a>		Not Notified
Verizon Business	<a href="mailto:osp-team@uk.verizonbusiness.com">osp-team@uk.verizonbusiness.com</a>	01293611736	Not Notified
Virgin Media	<a href="http://www.digdat.co.uk">http://www.digdat.co.uk</a>	08708883116	Not Notified
Vodafone	<a href="mailto:osm.enquiries@atkinsglobal.com">osm.enquiries@atkinsglobal.com</a>	01454662881	Not Notified

## Disclaimer

Please refer to LineasearchbeforeUdig's Terms of Use for full terms of use available at [www.lineasearchbeforeudig.co.uk](http://www.lineasearchbeforeudig.co.uk)

The results of this Enquiry are personal to the Enquirer and shall not be shared with or relied upon by any other party. The asset information on which the Enquiry results are based has been provided by LSBUD Members, therefore LineasearchbeforeUdig will provide no guarantee that such information is accurate or reliable nor does it monitor such asset information for accuracy and reliability going forward. There may also be asset owners which do not participate in the enquiry service operated by LineasearchbeforeUdig, including but not exclusively those set out above. Therefore, LineasearchbeforeUdig cannot make any representation or give any guarantee or warranty as to the completeness of the information contained in the enquiry results or accept any responsibility for the accuracy of the mapping images used. LineasearchbeforeUdig and its employees, agents and consultants accept no liability (save that nothing in this Enquiry Confirmation excludes or limits our liability for death or personal injury arising from our negligence, or our fraud or fraudulent misrepresentation, or any other liability that cannot be excluded or limited by English law) arising in respect thereof or in any other way for errors or omissions including responsibility to any person by reason of negligence.