



HH CONSTRUCTION (GROUNDWORK CONTRACTORS) LIMITED

12 Methley Road, Castleford, WF10 1LX
www.hhconstructionltd.com info@hhconstructionltd.com



RAMS Package – Stoning up

This risk assessment and method statement have been compiled using industry knowledge, client information and legal guidance, regulations and customer requirements. The document is not definitive in that; it should be read at a pre-work commencement briefing and challenged. Any alterations can be made on the rear of the document, and counter signed (initials). The document should be continually reviewed at site level to ensure its validity.

Client	Aldi / Projekt	Contract No.	HH 592	Date	09/05/2025
Site Address	Aldi Whitehaven, Preston Road, CA28	Site Manager			
Work Area	Site				
HH Contracts Manager	Paul Handforth	Contact No.	07539 268537		
HH Site Manager		Contact No.			

1. Programme

Start Date	26/05/2025	Duration of Works	TBC	Working Days	Monday – Friday
				Working Hours	08:00-17:30

2. Actions prior to commencing work activities

Prior to commencing work on site, all our operatives will report to the site office on their first day to receive a H&S Safety induction and sign in / out each and every time they arrive or leave the site. The site manager working with our foreman shall maintain open lines of communication to ensure that safety and quality standards are being met and to ensure the areas are segregated from other contractors to ensure the areas remain clear during the specified ground work tasks.

3. Description of works

HH Construction LTD have been appointed to carry out the following work activities:

- Transporting and laying of stone.

4. Competence/Resources

HH Construction Ltd will employ sufficient numbers of ground workers or machine operators as required to enable completion of works within contract specification and times. The operatives will all hold the appropriate skills and qualifications to undertake these works:

- All plant and machinery operators will have been assessed under the CPCS and NPORS Registration Scheme and hold trained operator or competent operator cards.
- Training certificates will be available in the site file.
- Site managers hold current SMSTS & First aid
- All HH Construction employees will hold a current CSCS or CSCS Affiliated card.

5. Plant/Equipment/Tool requirements

All plant/equipment/tools are subject to thorough examinations under the Provision and Use of Work Equipment Regulations 1998.

Type	Plant No.	Inspection Date
Excavator 360		
Forward Tip Dumper		
Ride on Roller		



HH CONSTRUCTION (GROUNDWORK CONTRACTORS) LIMITED

12 Methley Road, Castleford, WF10 1LX
www.hhconstructionltd.com info@hhconstructionltd.com



6. Personal Protective Equipment (PPE) Required (Please ✓)

							Other	Other
Hardhat BS EN 397	Hi-Vis BS EN 471-2	Footwear BS EN345-1	Gloves BS EN 388	Glasses BS EN 166 B	Hearing BS EN 352-1	Respiratory EN149 FFP3		
MANDATORY	MANDATORY	MANDATORY	✓	✓	✓			

Mandatory minimum **3 points** PPE at all times. Additional PPE may be required as directed on the site-specific Risk Assessments. All PPE issued will be recorded on the issue record and where necessary, operatives will receive suitable instruction and training on its use.

7. Welfare requirements

Provided by Principal Contractor in compliance with Schedule 2 of the 2015 CDM regulations.

HH Construction will provide their own site cabin, plant/equipment safe as per Preamble document – HHRAMS 00.

8. Emergency Procedures (indicate whether provided by PC, HH or both – see 1. Sequence of works)

First aid cover and facilities will be provided by the main contractor in addition to our own trained first aider, these requirements will be communicated to the workforce during the site health and safety induction.

Emergency procedures will be designed and implemented by the main contractor; these will be communicated to the workforce during the site induction.

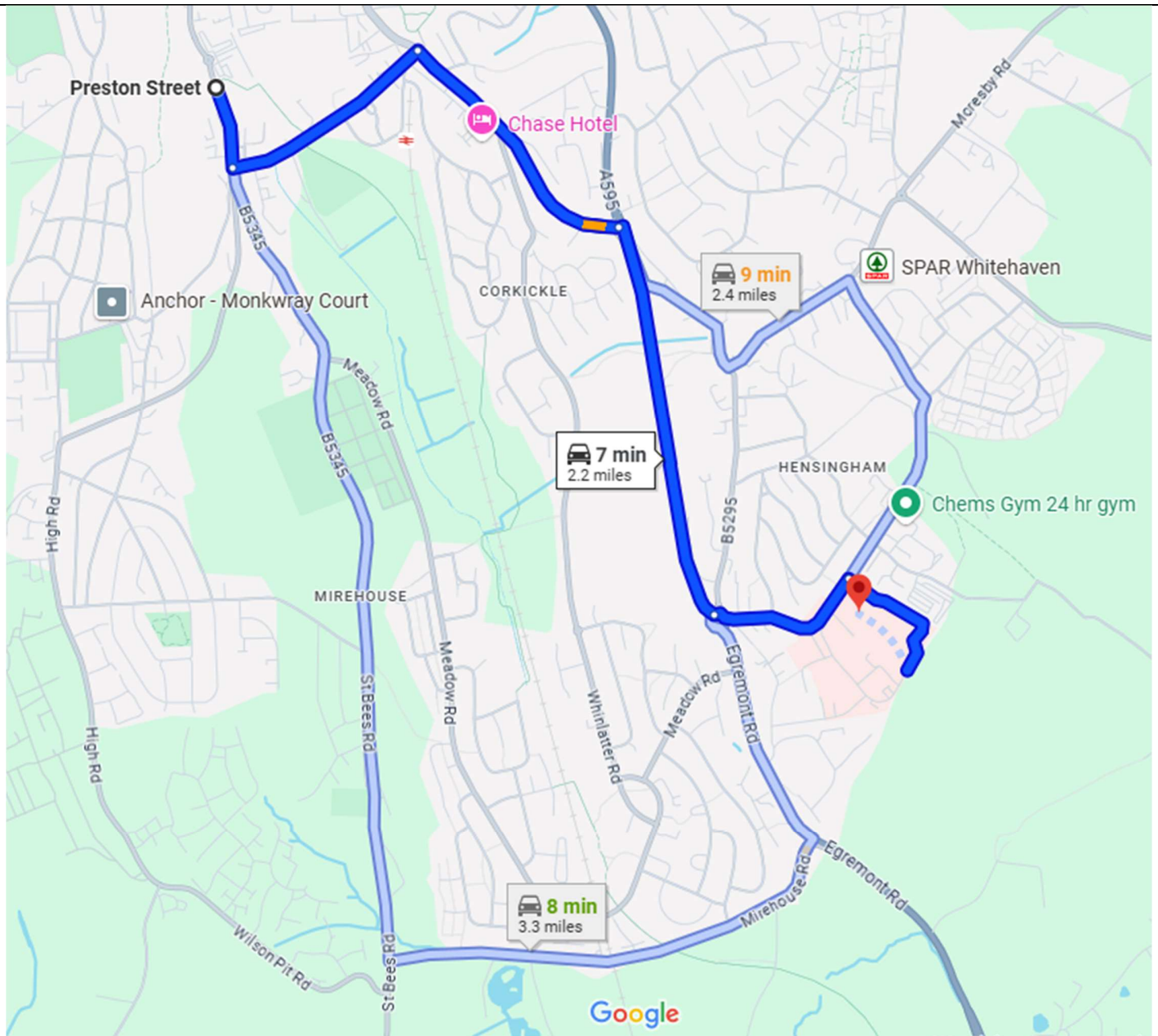
			Other
PC	Both	HH	
HH First Aider	Paul Handforth		
Nearest Hospital (add directions below)	West Cumberland Hospital - Homewood Rd, Hensingham, Whitehaven CA28 8JG		

- ↑ Head south on Preston St/B5345 towards Ginns
 - Continue to follow B5345
- ↶ Turn left onto Coach Rd/The Rise
 - Continue to follow Coach Rd
- ↶ Turn right onto Corkickle/A5094
 - Continue to follow A5094
- ↶ Turn right onto Hensingham Byp/A595
- ↻ At Hensingham Roundabout, take the 2nd exit onto Homewood Rd
- ↶ Turn right



HH CONSTRUCTION (GROUNDWORK CONTRACTORS) LIMITED

12 Methley Road, Castleford, WF10 1LX
www.hhconstructionltd.com info@hhconstructionltd.com





HH CONSTRUCTION (GROUNDWORK CONTRACTORS) LIMITED

12 Methley Road, Castleford, WF10 1LX
www.hhconstructionltd.com info@hhconstructionltd.com



9. Waste and environmental impacts

Our scope of works will not have any environmental impacts. We will adhere to the Principal Contractors waste procedures and any waste will be disposed of in the designated site skips.
All materials imported and exported to site shall adhere to the WMP and ensure all information is recorded

10. COSHH

A thorough risk assessment must be completed for all hazardous substances under the Control of Substances Hazardous to Health Regulations 2002.

Works to be carried out are associated with the following hazardous substances

Concrete <input type="checkbox"/>	Cement <input type="checkbox"/>	Hydraulic Oil <input type="checkbox"/>	Petrol <input type="checkbox"/>	Diesel <input checked="" type="checkbox"/>	Grout <input type="checkbox"/>	Tarmac <input type="checkbox"/>
Line Marker <input type="checkbox"/>	Grease <input type="checkbox"/>	Aggregates <input type="checkbox"/>	Adolease <input type="checkbox"/>	Adblue <input type="checkbox"/>	Pipe Lubricant <input type="checkbox"/>	2-Stroke Oil <input type="checkbox"/>
Release Agent <input type="checkbox"/>	Sealant <input type="checkbox"/>	pH Neutraliser <input type="checkbox"/>	Foam <input type="checkbox"/>	Emulsion <input type="checkbox"/>	Adhesive Tape <input type="checkbox"/>	Bitumastic Paint <input type="checkbox"/>
Bituminous Materials <input type="checkbox"/>	Thermoplastic Road Marking <input type="checkbox"/>	P.S Mortar <input type="checkbox"/>	Construction Dust <input checked="" type="checkbox"/>	<input type="checkbox"/>	<input type="checkbox"/>	<input type="checkbox"/>

To be read in conjunction with COSHH Risk Assessment no.

- CRA 005 Diesel 2025
- CRA 026 Construction Dust 2025

11. Permits required (Please ✓)

Permit to work	✓	Confined Spaces		Permit to Dig	✓
Hot-work Permit		Out-of-hours Work		Other	

12. Temporary works

HH Construction do not design any temporary works, and work underneath external designers. Contact information for temporary works relevant to the task below.

TW Design		Contact Number	
TWD Checker		Contact Number	
TW Coordinator		Contact Number	
TW Supervisor		Contact Number	

13. Lifting operations

All lifting operations conducted by HH Construction will be completed in line with the 'Schedule of Common Lifts' within the Lifting Operations Policy – HHC-P&P023.

A bespoke lift plan must also be completed showing details of the lift including location, machine used, accessories used and materials to be lifted.

All lifting equipment is subject to thorough examinations under the Lifting Operations and Lifting Equipment Regulations 1998 at the specified intervals:

- 6 months, for lifting equipment and any associated accessories used to lift people.
- 6 months, for all lifting accessories.
- 12 months, for all other lifting equipment.

Appointed Person		Contact Number	
------------------	--	----------------	--



HH CONSTRUCTION (GROUNDWORK CONTRACTORS) LIMITED

12 Methley Road, Castleford, WF10 1LX
www.hhconstructionltd.com info@hhconstructionltd.com



14. Scope of works

In order to ensure that the works are carried out in a way which minimises the risk to the safety and health of both workers and others affected by the work activities, the following measures will be implemented and followed. If at any time this sequence is no longer relevant, works must cease immediately, and the supervisor informed.

The works will then be continually assessed and where necessary suitable amendments made to the risk assessment and this method statement. Any subsequent changes made must be communicated to the workforce.

Order of works:

- Pre-start safety checks.
- Securing the work area.
- Operation.
- Additional Conditions.

15. Roles and Responsibilities

15.1 Site manager:

- Ensure the risk assessment and method statement have been communicated to those involved in the work.
- Monitor the works to ensure the risk assessment and SSW remains suitable and sufficient.
- Ensure a Pre-Start induction is given to all workers involved in the task.
- Ensure all the relevant inspection records are signed and completed.
- Ensure that all the Equipment used for the task is tested and certificates are checked.

NB: A Pre-Start Briefing must be given by the site manager prior to work commencing. The talk must cover the requirements of this Method Statement, and site hazards or work restrictions for the day and any other relevant instructions.

15.2 Site Operatives:

- Ensuring they take reasonable care of their own safety, and or any other person(s), who may be affected by their acts or omissions at work.
- Not misusing or interfering with anything provided with regard to safety, health, welfare, and fire arrangements. (Employees misusing personal protective equipment will be subject to disciplinary action by the Company). Ensuring they use and/or wear PPE as instructed.
- Looking after and maintaining equipment issued and requesting replacements when necessary.
- Complying strictly to all site rules and safe working procedures and only operate plant and equipment for which they are trained.
- Using the correct tools and equipment for the task, reporting defective equipment.
- Follow the safety systems of work detailed in any risk assessment or method statement.
- Report all accidents / incidents to the appropriate persons.
- Comply with both the company rules and any client site rules.



HH CONSTRUCTION (GROUNDWORK CONTRACTORS) LIMITED

12 Methley Road, Castleford, WF10 1LX
www.hhconstructionltd.com info@hhconstructionltd.com



16. Methodology

16.1 Pre-Start checks

Prior to any work commencing, pre-use inspections must be taken and recorded to ensure the equipment is safe for use and fit for purpose. All equipment must be used for their intended purposes.

16.2 Securing the work area

- Access and egress points will be agreed with the client prior to work commencing. General restrictions apply with access for all deliveries including plant and materials, i.e., not blocking existing driveways or access points, not parking on side streets or restricted roads and use of banksman as required to ensure safe access/egress.
- Normal access to the site will be as directed by the Site Manager or Client.
- Interlocked pedestrian barriers will be used to secure the work area will be made secure in order to prevent the entry of unauthorised personnel.
- Pedestrians are to be segregated from the works area using suitable, barriers, fencing, signage, and cones as required.
- All personnel are to report to the site office, sign in daily.

16.2.1 Use of mobile plant

- The following controls must be implemented when using mobile plant:
 - 3.2.1.1 Pre-use plant inspections
 - Both the excavator and wheeled dumper must be subject to a pre-use inspection in order to check for signs of damage or defect such as:
 - In-operative brakes
 - Hydraulic leaks
 - Broken mirrors / glass
 - Defective levers
 - Defective steering
 - This list is not exhaustive and each item of plant may have additional items to check, a "Daily Plant Inspection Form" contains a list of items to check, this must be completed and signed on a daily basis by the plant operator
- Any defects are to be reported immediately to the Site Supervisor and the item concerned not used until a suitable repair has been carried out.
- Windows, mirrors & reversing cameras must be cleaned regularly in order to prevent a build-up of dirt and to give suitable visibility and adjusted to suit the driver so that all-round visibility is achieved.

16.2.1.2 Loading the spoil onto the dumper

- As the stone is moved, the material will be placed in to the dumper until it is fully loaded. It should not be loaded to the extent that arisings are falling out of the bucket as it is transported, this could result in workers being struck by falling material.
- During loading the dumper operator must stop the machine, remove the keys and stand clear of the loading area in a safe position. The excavator operator also has a responsibility not to begin to load the dumper until the operator has moved and stood in a safe area.



HH CONSTRUCTION (GROUNDWORK CONTRACTORS) LIMITED

12 Methley Road, Castleford, WF10 1LX
www.hhconstructionltd.com info@hhconstructionltd.com



16.2.1.3 Changing excavator attachments

- When any attachments are changed on the excavator the quick hitch pin must be available and secured in place using the safety clip to prevent it from becoming detached.
- It is the excavator operator's responsibility to ensure the safety pin is in place & secured.
- Checking the quick hitch device must be part of the pre-use inspections and should be regularly maintained to ensure correct working, any defect must be reported immediately. The excavator should not be used until a suitable repair has been carried out, a "Thorough Examination" of the quick hitch must then be undertaken and a certificate issued before it is used.
- When changing attachments on the excavators, the appropriate safety and environmental control measures will be installed in order to prevent any incidents. Drip trays will be used when attachments are being changed. Spill kits will also be readily available.

16.2.1.4 Use of the roller

- The ride on roller will be subject to a pre-use inspection to ensure that it is free from any damages or defects that could compromise the safety of the machine.
- Operatives will be CPCS accredited for the roller and will operate the machine within its limits (e.g. not using excessive speed, especially when turning or working on a slope and not working on to steep a gradient etc.).

16.3 Stoning up

- There are areas on site where it will be necessary to stone up.
- Appropriate materials will be transported to the areas using either excavators or dumpers (depending on the circumstances). The stone will then be spread using the excavators.
- This will then be compacted to the correct extent, as detailed in the specification, using appropriate compaction equipment (e.g. a compaction roller).
- Special attention will be given to ensure that the stoned up areas are accurate to the levels given in the specification

16.4 Additional conditions

16.4.1 Danger to operatives on site.

- All personnel on site will be aware of the dangers of working close to heavy plant and with hot bituminous materials and will wear the appropriate PPE, i.e.: safety footwear, gloves (heat resistant), high visibility clothing, goggles and hard hats as required.
- Only competent trained persons will operate the plant and equipment required.
- Footplates/cover plates will be kept clean and clear of materials at all times.
- Operators of the machine will be reminded of the dangers of walking on metal surfaces and will be particularly cautious when the surfaces are wet.
- All personnel will be made aware of hot surfaces on the machine and will be wearing Heat Resistant gloves and footwear when appropriate.
- Personnel operating machinery will remain within isolated areas, clear of site traffic.
- All personnel must keep clear of moving parts, e.g.: augers, tampers and flight bars conveyor systems and rollers.
- When marshalling the lorry into position banksman must stand at the side of the plant and away from the direction of the vehicle.
- The driver of the plant will position according to relevant site line for a better all-round observation.



HH CONSTRUCTION (GROUNDWORK CONTRACTORS) LIMITED

12 Methley Road, Castleford, WF10 1LX
www.hhconstructionltd.com info@hhconstructionltd.com



- Fire extinguishers will be kept on the machine at all times.
- Gas bottles for the plant will be kept in a safe place stored as per the requirements of the Dangerous Substances Regulations.

16.4.2 Danger to Pedestrians, Public and Children where applicable.

- Ensure no pedestrians or unauthorised personnel enter the area around the plant or operations.
- Ensure adequate guarding and signage is in place prior to commencement of operations and continue to monitor during day.
- If unauthorised access is gained, end all operations promptly and report to supervisor/manager immediately to enable the situation to be handled affectively.

16.4.3 Working with vibrating plant/equipment

- When using vibrating equipment, operatives will ensure that they have understood the relevant HAVS assessment for the plant to be used.
- The HAVS assessment will detail what the maximum amount of time that an operative can use a certain item of equipment before the exposure limits are reached.
- In order to minimise the effects of vibration, operatives will ensure that they alternate the use of the vibrating equipment between themselves to make sure that no one individual is exposed to excessive levels of vibration.
- The HAVS assessment will also detail the appropriate PPE that must be worn when using the item of plant/equipment (e.g., heavy gloves, safety boots etc.) and also the correct operational procedures that should be followed (e.g. taking frequent breaks and not smoking as it affects blood circulation, increasing the risk of suffering from the effects of vibration etc.).

16.4.4 Construction dust

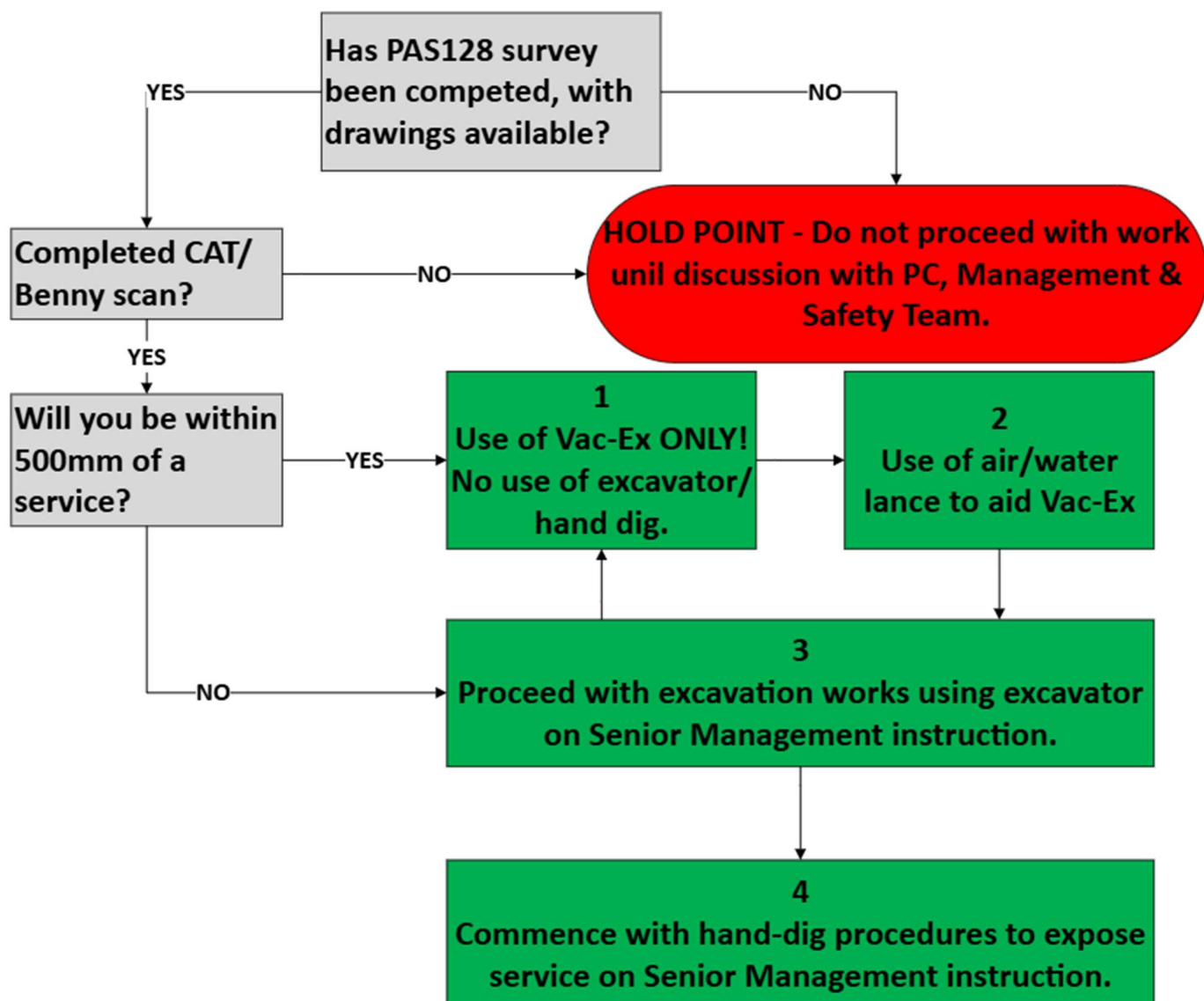
Silica dust will be generated when working in construction, specifically respirable crystalline silica (RCS). This is a fine dust generated from materials like rock, sand, and concrete, and can pose serious health risks if inhaled. Prolonged exposure can lead to silicosis, a lung disease, and potentially increase the risk of lung cancer and other respiratory illnesses.

- Assessment of workload to determine those activities that may generate dust/Fume
- COSHH data sheets checked for those materials producing dust and fumes, any toxic material identified followed by an assessment to establish, who is exposed, what the exposure risk is and where the work shall be completed.
- Dust emissions to be minimised and/or contained to boundaries of the construction site, e.g. re-specifying work to eliminate or reduce dust hazards by either;
 - Dampening work before or during mixing and any sanding down of floor areas.
 - Dust suppression to be used on equipment where possible.
- All disposable dust masks to be FFP3 type (minimum)
- All operatives wearing or having the need to wear disposable masks must be face fit tested.



HH CONSTRUCTION (GROUNDWORK CONTRACTORS) LIMITED

12 Methley Road, Castleford, WF10 1LX
www.hhconstructionltd.com info@hhconstructionltd.com





HH CONSTRUCTION (GROUNDWORK CONTRACTORS) LIMITED

12 Methley Road, Castleford, WF10 1LX
www.hhconstructionltd.com info@hhconstructionltd.com



Nature of Work	Stoning up.				Ref No.	HHRAMS 23		Contract No.	HH592
Client/Address	Aldi/Projekt - Aldi Whitehaven, Preston Road, CA28					Review Date	Prior to work commencing, then in line with any significant changes.		
Contract Manager	Paul Handforth				Contact Number		07539 268537		
Site Manager					Contact Number				
Persons at Risk	Employed ✓	Other Workers ✓	Clients Employees ✓		Members of Public			Vulnerable Persons	

Personal Protective Equipment (PPE) Required (Please ✓)

							Other	Other
Hardhat BS EN 397	Hi-Vis BS EN 471-2	Footwear BS EN345-1	Gloves BS EN 388	Glasses BS EN 166 A	Hearing BS EN 352-1	Respiratory EN149 FFP3		
MANDATORY	MANDATORY	MANDATORY	✓	✓	✓			

Likelihood

		Likelihood				
		not possible	remote	possible	probable	inevitable
Severity	superficial	1	2	3	4	5
	minor	2	4	6	8	10
	moderate	3	6	9	12	15
	major	4	8	12	16	20
	fatal	5	10	15	20	25

Low Risk	Tolerable Level
Medium Risk	Frequent Monitoring Required
High Risk	Unacceptable – Further Measures Required



HH CONSTRUCTION (GROUNDWORK CONTRACTORS) LIMITED

12 Methley Road, Castleford, WF10 1LX
www.hhconstructionltd.com info@hhconstructionltd.com



Hazards	Those at risk	Risk Rating before Controls		Control Measures	Risk Rating After Controls	
		Likelihood	Severity		Likelihood	Severity
Use of Excavator striking other machinery, structures or individuals.	All site personal.	3	5	<ul style="list-style-type: none">Plant operators must be trained to national plant standards (CPCS/NPORS).They must ensure that they constantly check their surroundings and ensure that the plant they are using has been inspected and is safe for use.The speed must be kept to a minimum at all times and any site speed limits adhered to, this can be achieved by keeping machine at low revs/gears.Keys must never be left in plant when unattended.All operatives to adhere to machine exclusion zones and ensure not to encroach within a machines working radius. Minimum 3mtr exclusion zone.Ensure that all hand signals are agreed, with reference to BS7121, before operations commence.Implement use of radio communications where practicable, keeping marshal away from immediate area.Keep minimum of 500mm clearance between machine and any structure.Implement visible barriers between machine route and any structure as a visual aid for operator.	1	5
		15			5	
Dust. Inhalation of hazardous airborne particles.	Operatives Others in immediate area	5	4	<ul style="list-style-type: none">Ensure operatives are face fit tested and wearing appropriate R.P.E if dust cannot be controlled by other means.Prevent dust from entering cabbed machines by closing windows/doors and using maintained HVAC system.Dampen down ground where practicable, ensuring dust cannot be kicked up in initial instance.	2	4
		20			8	



HH CONSTRUCTION (GROUNDWORK CONTRACTORS) LIMITED

12 Methley Road, Castleford, WF10 1LX
www.hhconstructionltd.com info@hhconstructionltd.com



Use of Dumper around site where other work is underway.	Operative. All site personal.	5	5	<ul style="list-style-type: none">• Ensure ROPS is in place when operating dumpers to prevent machine rolling completely.• Seatbelts must be worn by operators at ALL times when operating the dumper.• Dumper operator must walk the route prior to manoeuvring to ensure hazards are clear.• The route should be kept clear of people, equipment, and materials whilst the dumper passes through.• The dumper should be under the guidance of a banksman when passing through congested parts of the site and when off-loading into excavations• When operating on stockpiles, the dumper must not be used outside the manufacturers guidance whilst on slopes.• When tipping over stockpiles/excavations, stop blocks must be used more than 1mtr away from the edge so as not to surcharge the angle of repose.	1	5
Excavations Plant falling into excavations; trapping or crushing – potential for damage to plant or serious injury or death.	Operative. Persons in immediate area.	5	5	<ul style="list-style-type: none">• Operators should be aware of their surroundings and should familiarise themselves with the site.• Operators should be aware of any excavations occurring in their areas.• Where necessary, stop blocks and barriers shall be used to guard the edges of excavations.• Ensure excavation barriers are implemented 2mtr away from the edge of the excavation:<ul style="list-style-type: none">○ Steel pedestrian barriers 0 working hours.○ Double clipped heras fencing – evenings/overnight.• Where excavations are open on highways or traffic/pedestrian routes, steel crossing plates rated for the right weight must be used.	1	5



HH CONSTRUCTION (GROUNDWORK CONTRACTORS) LIMITED

12 Methley Road, Castleford, WF10 1LX
www.hhconstructionltd.com info@hhconstructionltd.com



Quick-hitch when changing attachments and manoeuvring around site.	All site personnel	4	4	<ul style="list-style-type: none">All quick-hitch attachments, and the lifting eye, are regularly inspected as part of the vehicle maintenance checks as well as in line with regulations.Machine operators should change attachments in safe areas and then test the quick hitch before commencing any work to see that it has hitched correctly.All attachments should be crowned (facing the machine cab) when the machine is travelling around site so as not to strike/injury other site operatives.	1	4
Gaining access to and egress from the excavator cab.	Machine operative.	3	3	<ul style="list-style-type: none">The cab must be positioned so that it is parallel with the excavators tracksThe dedicated handrails and footsteps must be used and must be kept clear of debris, mud and other loose materialThe person must enter and leave the cab facing towards the cab (never have your back towards the cab).	3	2
Noise	Those within the work area	5	4	<ul style="list-style-type: none">Ear defenders must be worn by all those within the work area who are affected by the noiseThe wearer must ensure that the defenders are inspected before use and that any damaged items are not wornThe defenders must also be fitted correctly to ensure adequate hearing protection is achieved	2	4



HH CONSTRUCTION (GROUNDWORK CONTRACTORS) LIMITED

12 Methley Road, Castleford, WF10 1LX
www.hhconstructionltd.com info@hhconstructionltd.com



Vibration Operating Tools and Equipment which emits Vibration	Operator	5	4	<ul style="list-style-type: none">A HAV assessment will be compiled for all Tools & Equipment which produces Vibration levels above the EAV 2.5m/s²Any person suffering from any affects related to HAVS must report this to their supervisor. That person will then be given tasks which do not involve the use of Vibrating Tools / EquipmentAll workers must read the relevant HAV assessment for the Tool Equipment they are to use.They must ensure that the ELV 5.0m/s² is not exceeded within a 8hour periodThe Site Supervisor will monitor exposure levels for each worker compile a daily record of exposure.The Hands must be dry and warmed before using any vibrating Tools / Equipment, Gloves must be worn at all times in order to keep the Hands warm as this helps circulation.Regular breaks must be taken in order to keep the Hands warm and to enable a good Blood circulation to be maintained.	2	4
		20			8	

Manual Handling of various equipment on site.	Those carrying out the work	5	4	<ul style="list-style-type: none">Wherever possible mechanical equipment should be used to place the materials as close to the work area as possible to reduce the carrying distancesWhere materials are lifted manually then this should be number with more than one person in order to reduce the weight of the load carried by each personA good lifting technique should be adopted i.e. keep the back straight, bend the knees, take a firm grip and use the leg muscles to lift the loadGloves should be worn at all times to protect the hands from splinters, cuts, and abrasions	1	4
		20			4	



HH CONSTRUCTION (GROUNDWORK CONTRACTORS) LIMITED

12 Methley Road, Castleford, WF10 1LX
www.hhconstructionltd.com info@hhconstructionltd.com



Buried Services when carrying out excavation works.	Those carrying out the works	4	5		1	5	
		20			5		
					<ul style="list-style-type: none">• A permit to dig must be issued by the main contractor before works commence. All those involved in the works must be present when the PTD is issued and sign the permit• A pre-Use Inspection of Cable Detecting Equipment must be carried out in order to check for any damage or defect, any found should be reported to the site supervisor and the item not used until and a replacement issued.• Cable Detecting Equipment must have an up-to-date Calibration Certificate which should be checked before use, the CAT should also be checked on a live service to ensure it works correctly• Picks, Wrecking Bars etc must NOT be used when Hand Digging, only Shovels or Grafts are to be used, these must have insulated handles.• Service Drawings must be obtained when the permit to dig is issued, these should be used only as a guide and not reliable upon as accurate information• Cable Detecting Equipment must only be used by competent persons. If in doubt as to how the equipment works ASK!• Where necessary the Service provider must be contacted, and the service disconnected if possible• Hand Digging must be carried out with care (always dig as though a Service is there)• Scanning must be carried out regularly as the excavation works take place whether it is hand digging or mechanical digging		



HH CONSTRUCTION (GROUNDWORK CONTRACTORS) LIMITED

12 Methley Road, Castleford, WF10 1LX
www.hhconstructionltd.com info@hhconstructionltd.com



Fuel Spillage Contamination of the ground, also the possibility of fuel entering drains or water courses. Potential for fire/explosions from vapours within drainage systems.	 All those on site. The environment.	<table><tr><td>4</td><td>5</td></tr><tr><td colspan="2">20</td></tr></table>	4	5	20		<ul style="list-style-type: none">• All fuel tanks must be banded.• Any fuel containers (drums, cans etc.) must be appropriate for fuel storage and must be kept in a properly banded area or in drip trays. The bund must be large enough to store the contents of the largest container present.• Any spillage must be contained immediately using the spill kits that will be present in all refuelling areas.• Any contaminated soil or spillage containment material (granules, sand, absorbents etc.) must be treated as hazardous waste and should be disposed of in accordance with the environmental procedures set out by the principal contractor and the local and national regulations.• In the event that any fuel enters the drainage system, or any water courses, then appropriate authorities (Environment Agency, local authority, water company etc.) must be informed immediately.• The principal contractor will designate refuelling area on site. This will be surrounded by the appropriate barriers.• A small banded area should be formed in front of the fuel tanks to contain any drips or spills from the nozzles of the tank hoses. If this is not possible, then a drip tray should be set up in front of the tank.	<table><tr><td>1</td><td>5</td></tr><tr><td colspan="2">5</td></tr></table>	1	5	5	
4	5											
20												
1	5											
5												

UXO present (Unexploded Ordnance)	 Those working on site and those present in immediate area surrounding the site.	<table><tr><td>5</td><td>5</td></tr><tr><td colspan="2">25</td></tr></table>	5	5	25		<ul style="list-style-type: none">• All operatives attending site must attend CTM site induction for information relating to the UXO procedures on site.• All operatives attending site must attend HH Construction initial safety briefing by the H&S Manager/Contracts Manager/Site Manager relating to the UXO procedures on site.• Safe digging practices (see flowchart below) must be adhered to at all times.• An excavation banksman must be present at all times when excavation works are underway.• All excavation works must be conducted as safely as possible. If a mechanical excavator is to be used, the excavation must take place in layers to allow for banksman to adequately observe the ground.	<table><tr><td>2</td><td>5</td></tr><tr><td colspan="2">10</td></tr></table>	2	5	10	
5	5											
25												
2	5											
10												



HH CONSTRUCTION (GROUNDWORK CONTRACTORS) LIMITED

12 Methley Road, Castleford, WF10 1LX
www.hhconstructionltd.com info@hhconstructionltd.com



THIS RISK ASSESSMENT WAS PREPARED BY

Name	Position	Signature	Date
Alex Craig CertIOSH MIIRSM	H&S Manager		09/05/2025

MANAGER / SUPERVISOR INCHARGE OF WORKS

I confirm that I have read and understand the requirements of this method statement and associated risk assessments (as highlighted on first page) and have communicated them to operatives under my control and to others who may be affected by its requirements.

Note: it is important that you test the operatives' understanding and confirm that they have read and understood the method statement and risk assessments.

Name	Position	Signature	Date

OPERATIVES/WORKFORCE UNDERTAKING WORKS

I understand and will agree to adhere to the contents of this method statement and the associated risk assessments (as highlighted by the supervisor). I have attended a site induction/briefing that explained the general site rules and necessary site-specific arrangements.

Note: if you have any doubt about information given or contained in this method statement, ask for clarification.

Name	Position	Signature	Date