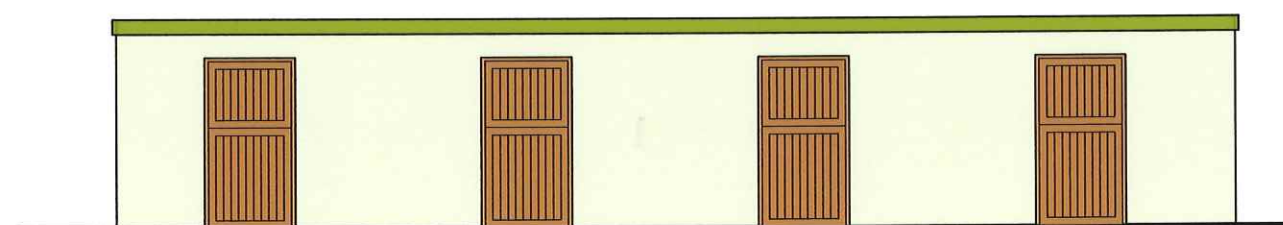
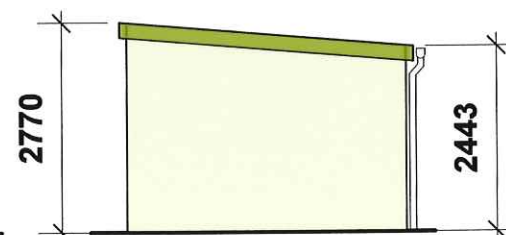


PLAN

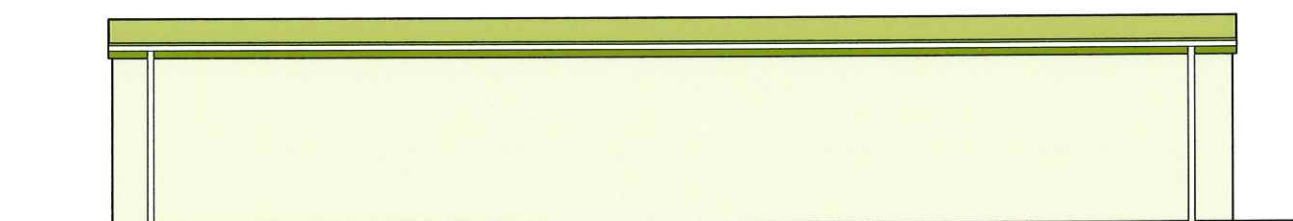
Four stall stable block built from 150mm dense concrete facing blockwork with painted external finish BSC 12B17 on concrete strip foundations with concrete floors. Steadmans AS 35 profiled metal roof on timber joists and flat steel fascias all in Plastisol finish, olive green colour BSC 12B27 stained timber stable doors, Roof water to french drain and soakaways via plastic deepflow gutters and rainwater pipes.



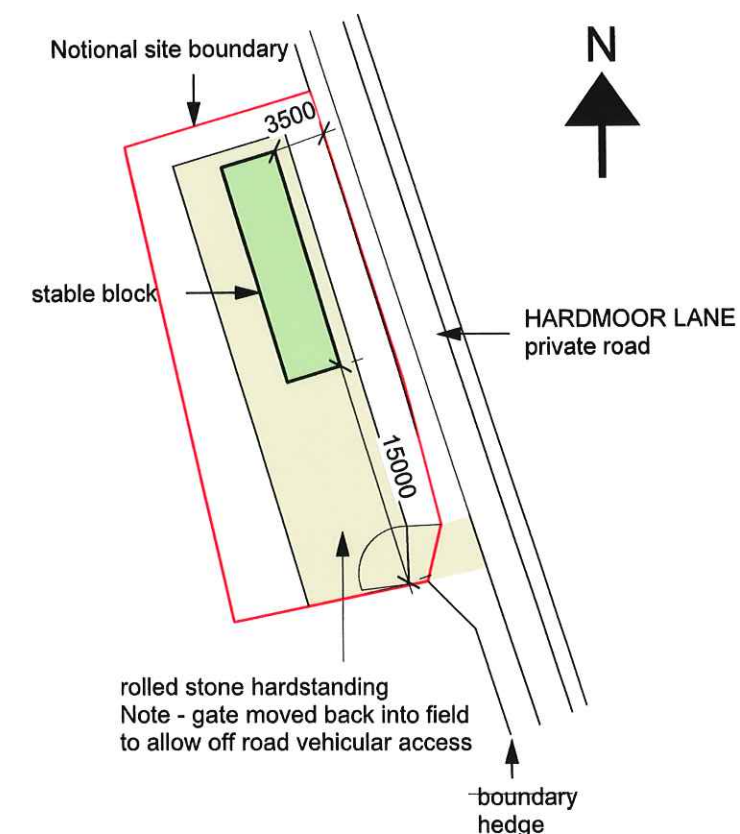
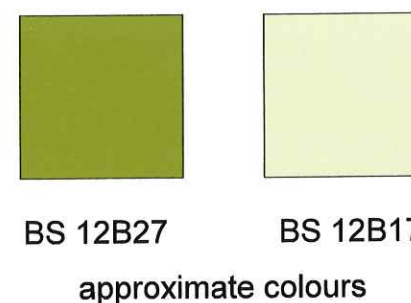
WEST ELEVATION



SOUTH ELEVATION



EAST ELEVATION



BLOCK PLAN SCALE 1/500

PROPOSED FOUR STALL STABLE BLOCK IN FIELD ADJACENT TO BARUTH COTTAGE, (CA28 9UU), HARDMOOR LANE, SANDWITH, NR WHITEHAVEN, (GRID REF. 295681 515309), FOR MRS. P. IRVING.
SCALE 1:100 @ A3