

PROPOSED KEY

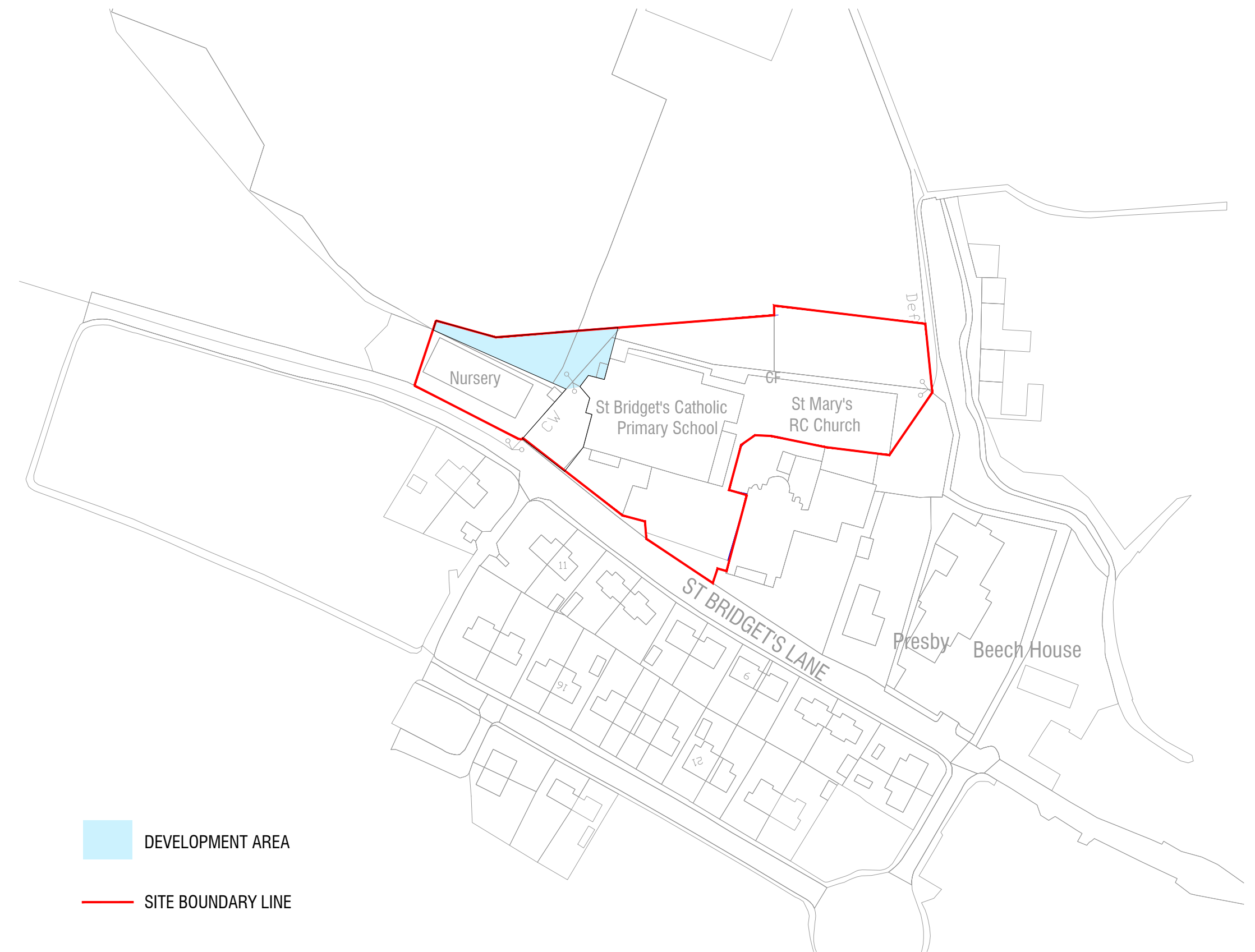
	CAR PARK EXTENSION - PERMEABLE TARMAC 2 COAT FINISH WITH PERIMETER PIN CURB
	EXISTING GRASS AREA TO BE RETAINED
	NEW LAMP POST
	NEW WALL MOUNTED FLOOD LIGHT

PARKING KEY

(V)	VISITOR PARKING BAY
(E)	PARKING SPACE FOR FUTURE ELECTRIC CHARGING
(D)	DISABLE PARKING BAY
(B)	STAFF BICYCLE STORAGE AREA
(P)	CAR PARKING BAY

STAFF CAR PARK EXTENSION SITE PLAN

Scale: 1:200 @ A1



LOCATION PLAN

Scale: 1:1250@ A1



EXISTING SITE PLAN

Scale: 1:200@ A1

ST BRIDGET'S STAFF CAR PARK EXTENSION

Telephone:
01229 481184
Website:
www.shepherdarchitectureandsurveying.co.uk

St Bridget's Catholic
Primary School, St Bridget's
Lane, Egremont, CA22 2BD

Revision Notes
N/A

www.shepherd
architectureandsurveying.co.uk

Staff Car Park Extension
Plan
Location Plan

Drawn - PW
Checked - NAS
16-12-24

SBS23B | PA | 001