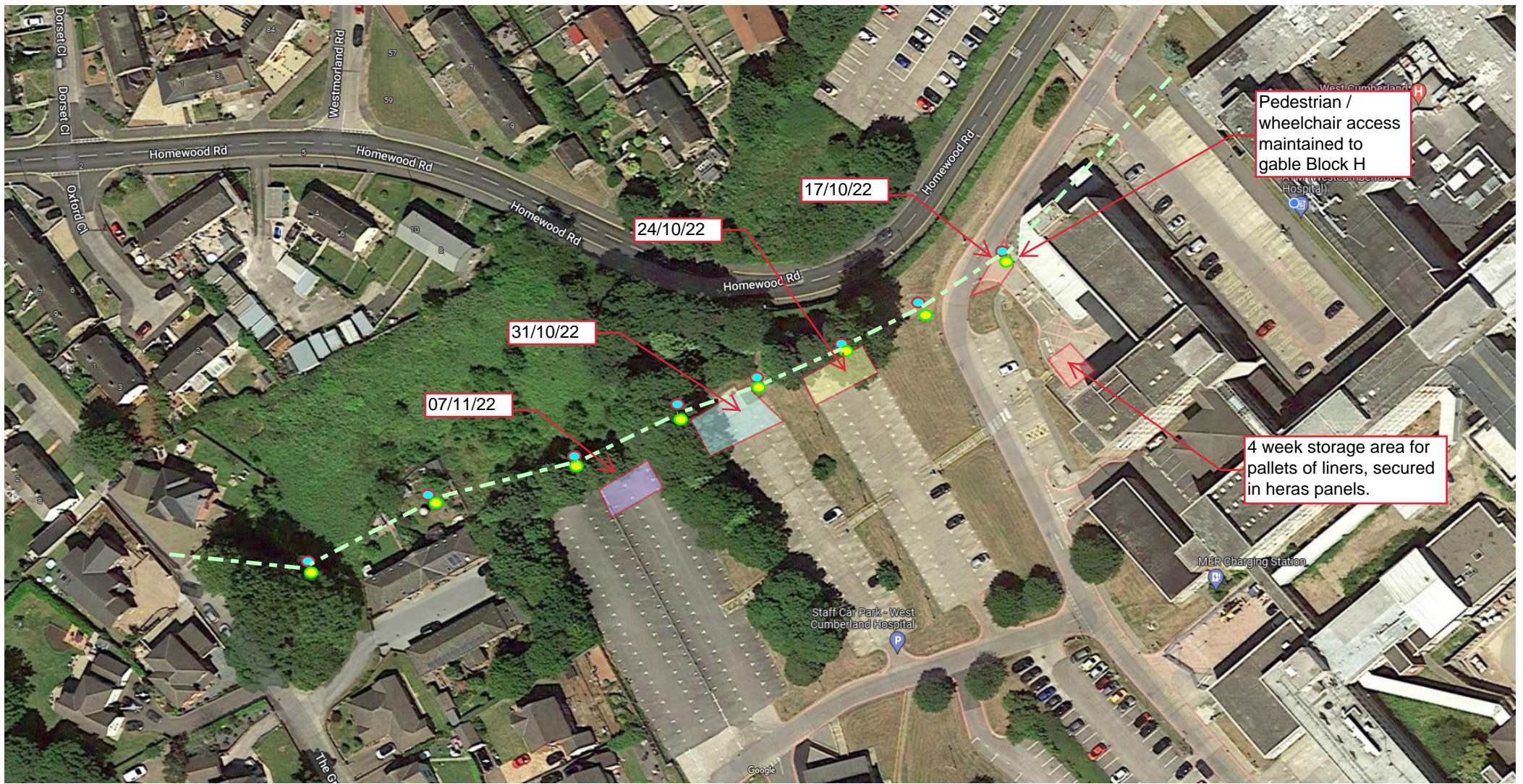


SKDS DRAINAGE OUTFALL RE-LINING WORKS



Pedestrian / wheelchair access maintained to gable Block H

17/10/22

24/10/22

31/10/22

07/11/22

4 week storage area for pallets of liners, secured in heras panels.

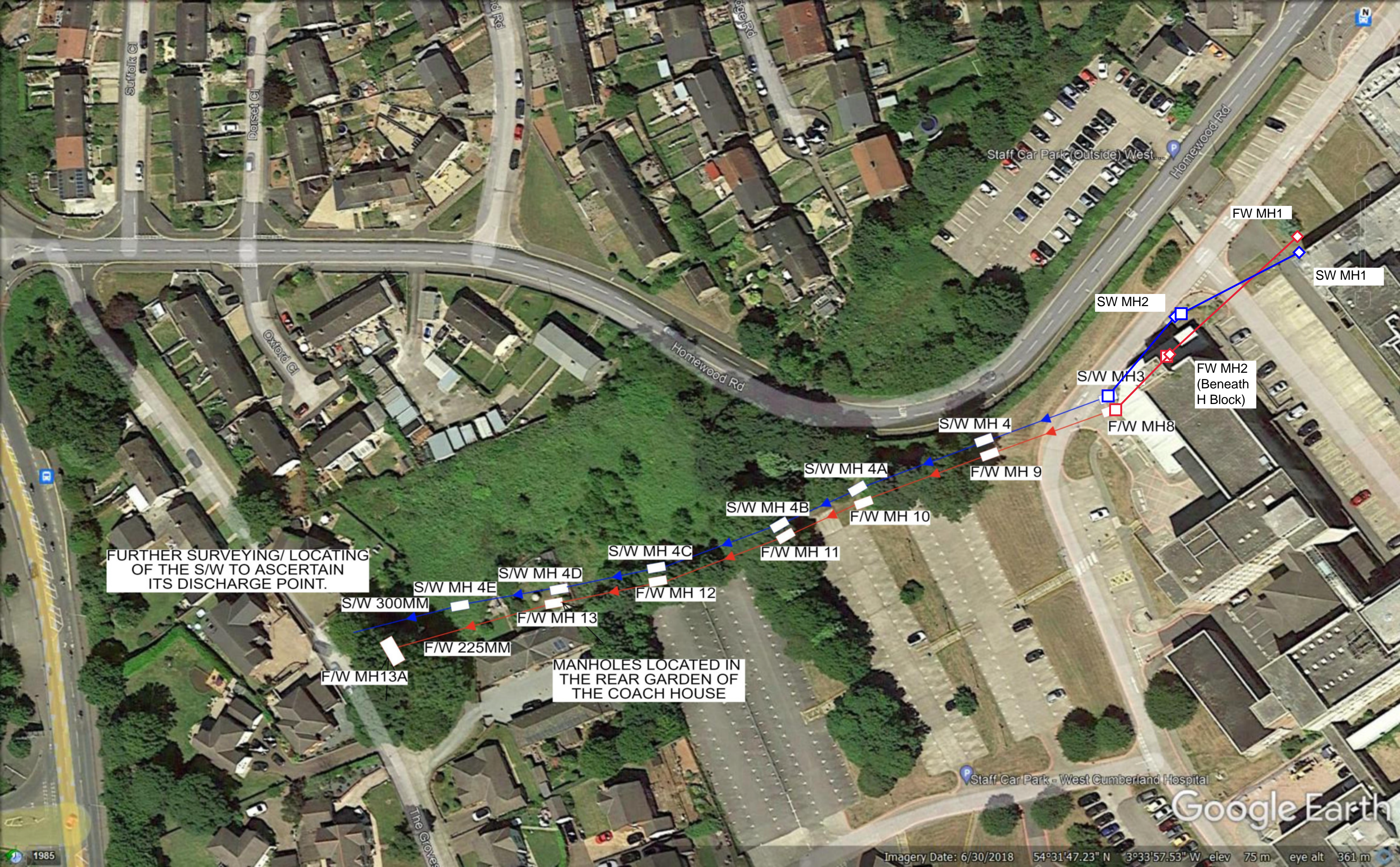
Parking bay required next to former A&E entrance, note pedestrian & wheelchair access to be maintained at all times. week comm 17/10/22

6 x parking bays to be taken out of service to allow unimpeded access to SKDS tanker & storage. week comm 24/10/22

6 x parking bays to be taken out of service to allow unimpeded access to SKDS tanker & storage. week comm 31/10/22

6 x parking bays to be taken out of service to allow unimpeded access to SKDS tanker & storage. Undergrowth to cut away. week comm 07/11/22

- 1) Storage areas to be secured with 1800mm high herras fencing panels, secured at close of each day.
- 2) All SKDS work to be kept within segregated off areas.
- 3) Local undergrowth removal along line of drainage manholes to facilitate safe access for personnel & plant.
- 4) Note materials to be delivered week comm 17/10/22, this will require area at front of former A&E entrance.



FURTHER SURVEYING/ LOCATING OF THE S/W TO ASCERTAIN ITS DISCHARGE POINT.

MANHOLES LOCATED IN THE REAR GARDEN OF THE COACH HOUSE

F/W MH13A

S/W 300MM

F/W 225MM

S/W MH 4E

F/W MH 13

S/W MH 4C

F/W MH 12

S/W MH 4B

F/W MH 10

S/W MH 4A

F/W MH 9

S/W MH 4

F/W MH 8

S/W MH 3

FW MH2 (Beneath H Block)

SW MH2

FW MH1

SW MH1