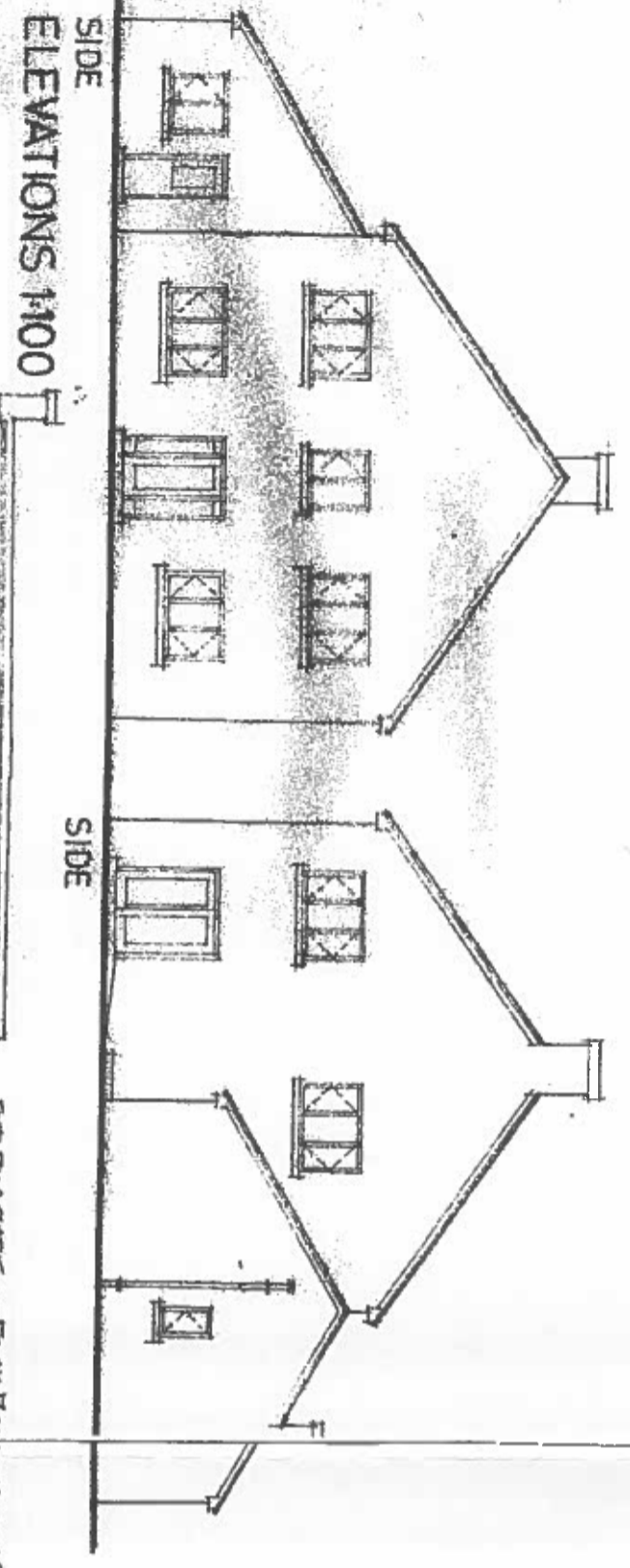


**PLOT 1, JULIA DRIVE, SANDWICH**  
 DWELLING and GARAGE for R. FOWLER

MOD SEPTEMBER 2013  
 MOD NOVEMBER 2013  
 MOD OCTOBER 2014



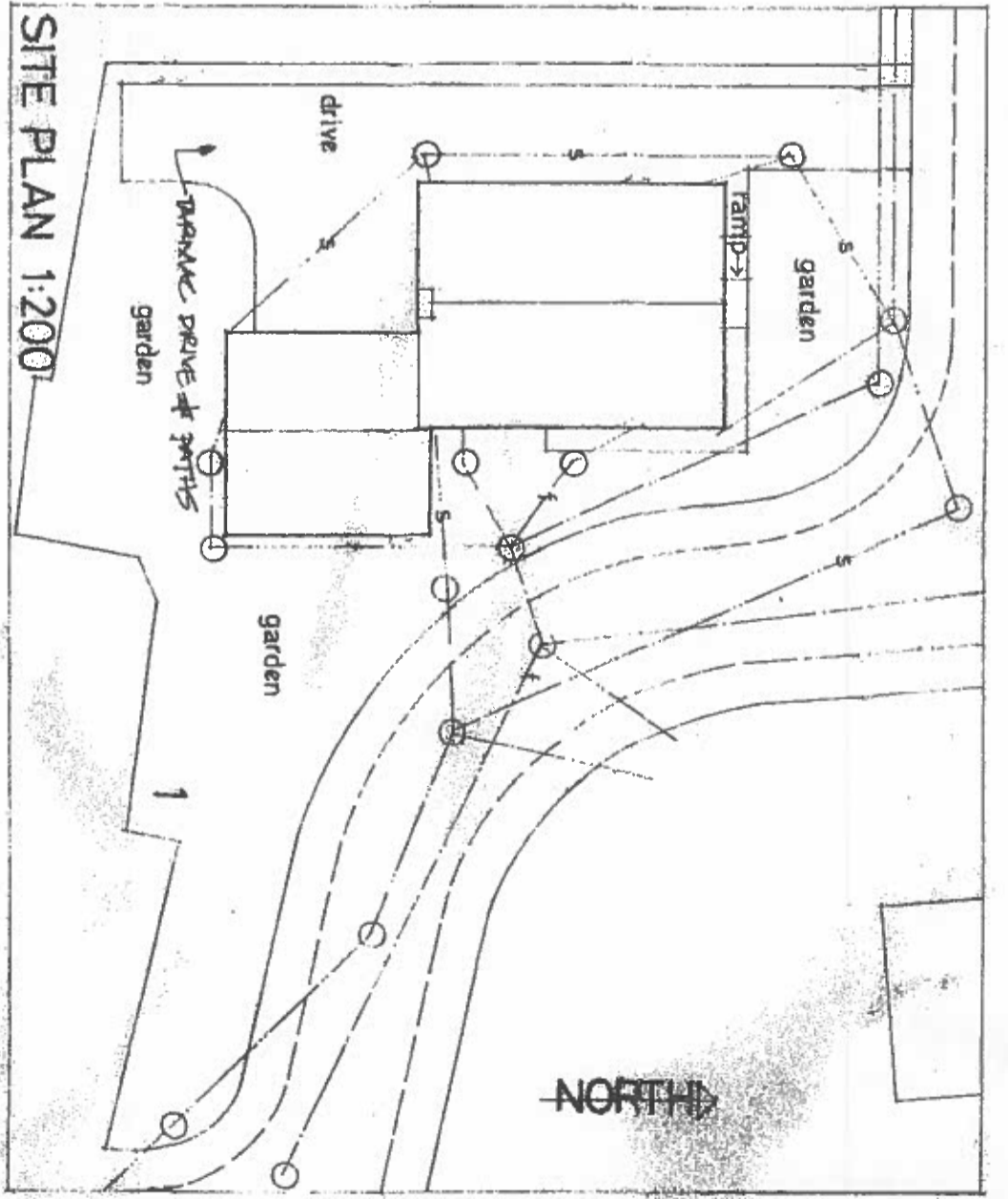
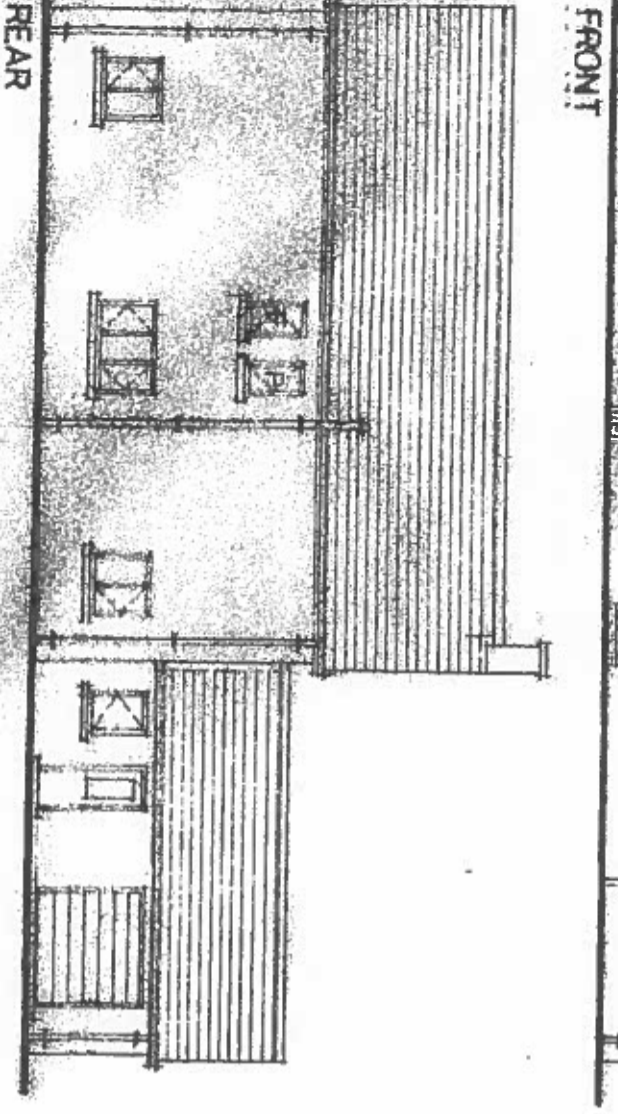
EXT FINISHES - FINISH PICKUP - TYPE TO BE U.A. APPROVED

UPVC WINDOWS/DOORS - LIGHT BROWN.

SITE PLAN INDICATES THE POSITION OF THE DWELLING & GARAGE, WITH ASSOC. POUL & SU FACE BEHIND THE CONNECTIONS TO ESTIMATE SYSTEMS PLUS THE ACCESS, MAKING REFERENCE TO THE SATISFACTION OF CHIEF & HIGHWAYS DEPT.

DRAINAGE UNITS INDICATED ON SITE PLAN, & WILL BE COMPLETION OF PARTITIONS, COVER & INVERT LEVELS THE FOLLOWING INSTALLATION OF GATE SYSTEMS.

SECTIONAL 'UP & OVER' SLUDGE PAGES FIXED IN ACCORDANCE WITH MANUFACTURER'S INSTRUCTIONS



**SITE PLAN 1:200**