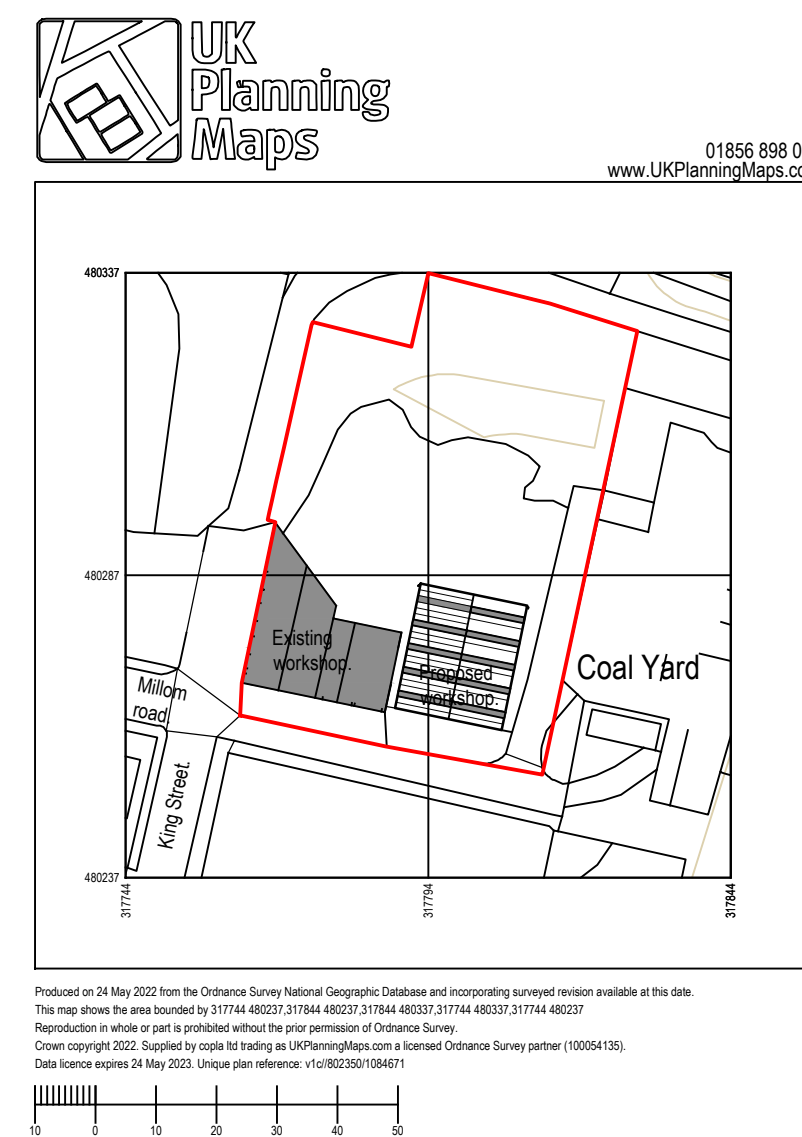
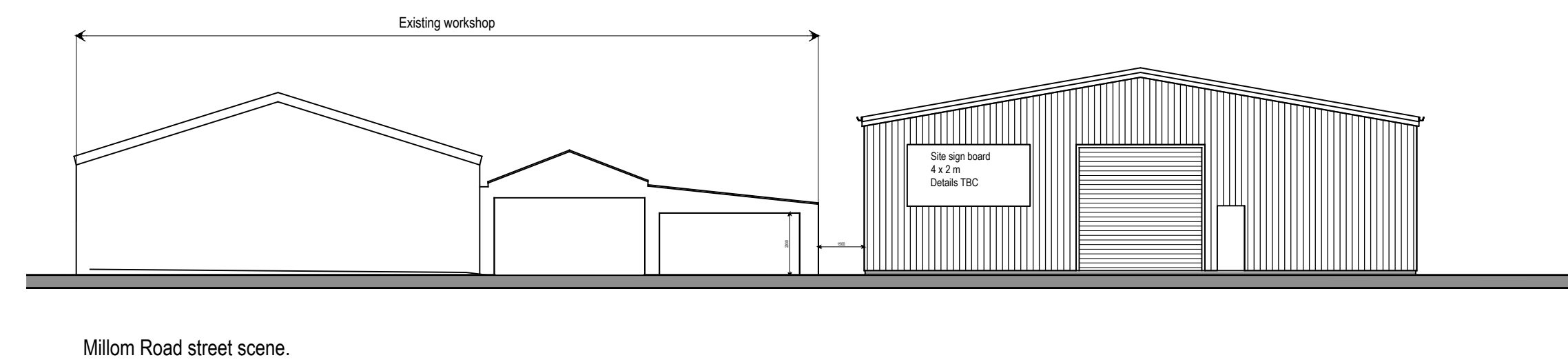


Materials.
Roof. Profiled metal sheets colour Anthracite.RAL 7016
Walls. Profiled metal sheets colour Anthracite.RAL 7016
Doors. Coated steel colour Anthracite.RAL 7016
Fascias, gutters and downpipes. Coated steel colour Anthracite.RAL 7016



FOR PLANNING PURPOSES ONLY.

Rev.C External colours altered. Dec. 2022.
Rev.B Internal alterations. Sept 2022.
Rev.A Building flipped back to front. Sept 2022.

Proposed Vehicle body workshop at Millom
Road, Millom, Cumbria. LA18 4BW.
For Mr. J. Milligan.
General arrangement drawing.

Scales 1:50, 1:1250 @A1
June 2022.
Dwg No. MIL_JM.01(C).