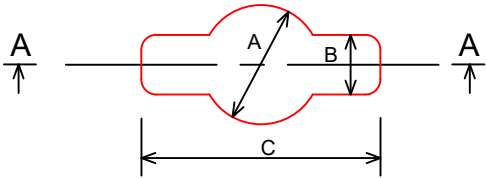


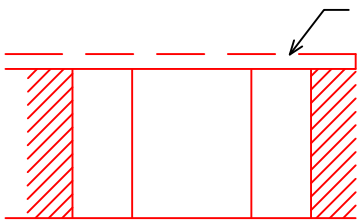
STANDARD	SPECIFICATION				APPLICABLE TO			
					CHAMBER TOPS	GULLY TOPS		
MATERIALS	DUCTILE IRON (MIN. WEIGHT 150 kgs FOR CHAMBER TOPS ON PRINCIPAL ROADS)				YES	NO		
	DUCTILE IRON				NO	YES		
SKID/SLIP RESISTANCE	THE COVER SHALL BE OF SUITABLE MATERIAL, DESIGN AND CONSTRUCTION TO ACHIEVE AN IN-SERVICE SKID/SLIP RESISTANCE POTENTIAL SUITABLE FOR THE CONDITIONS OF USE. THIS SHALL BE DETERMINED BY THE ACCELERATED POLISH TEST METHOD DESCRIBED IN BS9124. THE PSRV SHALL BE AS STATED IN THE TABLE SHOWN.				YES	YES		
SURFACE COATINGS	NOT COATED				YES	YES		
DEPTH OF INSERTION	NOT LESS THAN 80mm				YES	YES		
SEATINGS (QUIETNESS IN USE)	TRIANGULAR POINT SUSPENSION OR MACHINED SEATING				YES	NO		
	ONE PIECE, PERMANENT NON-ROCK DESIGN. UNLESS OTHERWISE STATED				NO	YES		
SLOTS IN GRATINGS	WHEN SLOTS ORIENTATION TO DIRECTION OF TRAFFIC IS BETWEEN 0° AND 45° AND 135° AND 180° THE MAXIMUM LENGTH OF THE SLOT SHOULD BE 150mm IF THE SLOT IS WIDER THAN 16mm				NO	YES		
FRAME BEARING AREA	FRAME BEDDING WIDTH SHOULD BE A MINIMUM OF 75mm SOLID METAL. IF SLOTS/HOLES ARE INCORPORATED WITHIN THE BEDDING AREA OF THE FRAME THE OVERALL WIDTH OF THE FRAME SHOULD BE INCREASED TO GIVE A COMPENSATING AREA OF SOLID FLANGE. THE EXTERNAL CORNERS OF THE FRAME SHOULD BE SOLID AND MAY BE SQUARE, CURVED OR CHAMFERED BUT AT NO POINT SHOULD THE WIDTH BE LESS THAN THE MINIMUM BEDDING WIDTH.				YES	YES		
FRAME DEPTH	CLASS	MINIMUM DEPTH				YES	YES	
		CATEGORY 1 AND 2	CATEGORY 3	CATEGORY 4	FOOTWAYS, VERGES REMOTE FROM CARRIAGEWAY			
		E600	150	150	150			N/A
		D400	150mm (CHAMBER TOP) 150mm (GULLY TOP)					N/A
		C250	N/A	75mm				N/A
		B125	N/A					100mm
FRAME WEB/GUSSET	WHERE VERTICAL FRAME WEBS/GUSSETS ARE PROVIDED THE TOPS OF THE WEBS/GUSSETS SHOULD BE A MINIMUM OF 15mm BELOW THE TOP OF THE FRAME FOR TRIANGULAR GUSSETS AND AT A MINIMUM OF 25mm FOR RECTANGULAR GUSSETS				YES	YES		
LIFTING HOLES (IN FRAME)	WHERE THE WEIGHT OF THE FRAME EXCEEDS 15kg IT SHALL BE PROVIDED WITH SUITABLE HOLES OR HOOKING POINTS. THESE SHOULD BE LOCATED TO GIVE A BALANCED LIFT. ANY HOLES WITHIN THE BEDDING AREA OF THE FRAME SHOULD NOT REDUCE THE SPECIFIED MINIMUM BEDDING AREA OF THE FRAME.				YES	YES		
KEYWAYS	AT LEAST TWO KEYWAYS AS DETAILED ALONGSIDE SHOULD BE PROVIDED IN EACH COMPLETE COVER. WHERE A COVER IS DIVIDED INTO TWO OR MORE COUPLED SECTIONS EACH SECTION SHOULD BE PROVIDED WITH AT LEAST ONE KEYWAY. CLOSED KEYWAYS SHOULD BE PROVIDED UNLESS OTHERWISE STATED IN THE CONTRACT.				YES	NO		

KEYWAYS

OPEN

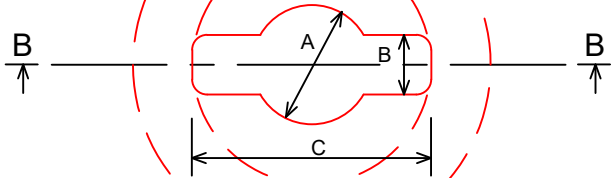


PLAN

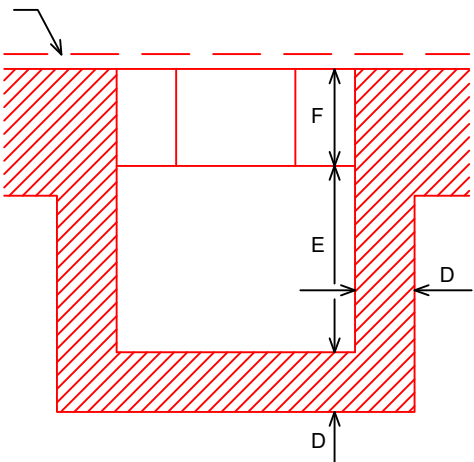


SECTION A-A

CLOSED

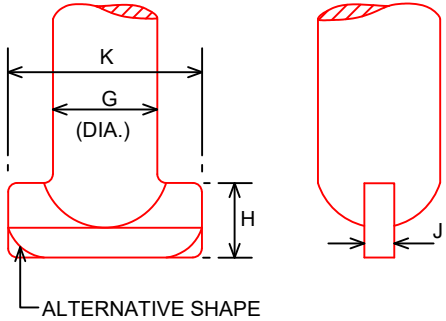


PLAN



SECTION B-B

KEYS



ALTERNATIVE SHAPE

PSV OF SURFACING MATERIAL ADJACENT TO COVER	MINIMUM PSRV OF COVER REQUIRED
50	40
55	45
60	50
65	55
68+	60

TYPE	KEYWAY						KEY	G	H	J	K
	A	B	C	D	E	F					
	MIN./MAX.	MIN./MAX.	MIN.	MIN.	MIN.	MIN.					
SMALL	14 - 16	9 - 11	29	6	17	6		12	12	6	25
LARGE	22 - 25	9 - 13	44	6	35	10		20	15	6	40

KEY

ALL DIMENSIONS ARE IN MILLIMETRES

SMALL KEY FOR CLASS B125 AND KERB-TYPE GULLY COVERS  
LARGE KEY FOR CLASS D400, E600 AND CLASS C250 COVERS



Parkhouse Building | Kingmoor Business Park | Carlisle | CA6 4SJ

REQUIREMENTS FOR CHAMBER  
AND GULLY TOPS

AMENDMENTS						Drawing No. SD_535_Am0			
NO.	DATE	DESCRIPTION			MADE	CHK			
							Scale	NTS	Date 07/07/2023
							Drawn by	Checked by	Approved by
							HP	DN	RL
							Crown copyright and database rights 2021 OS 100066931		
							A3		