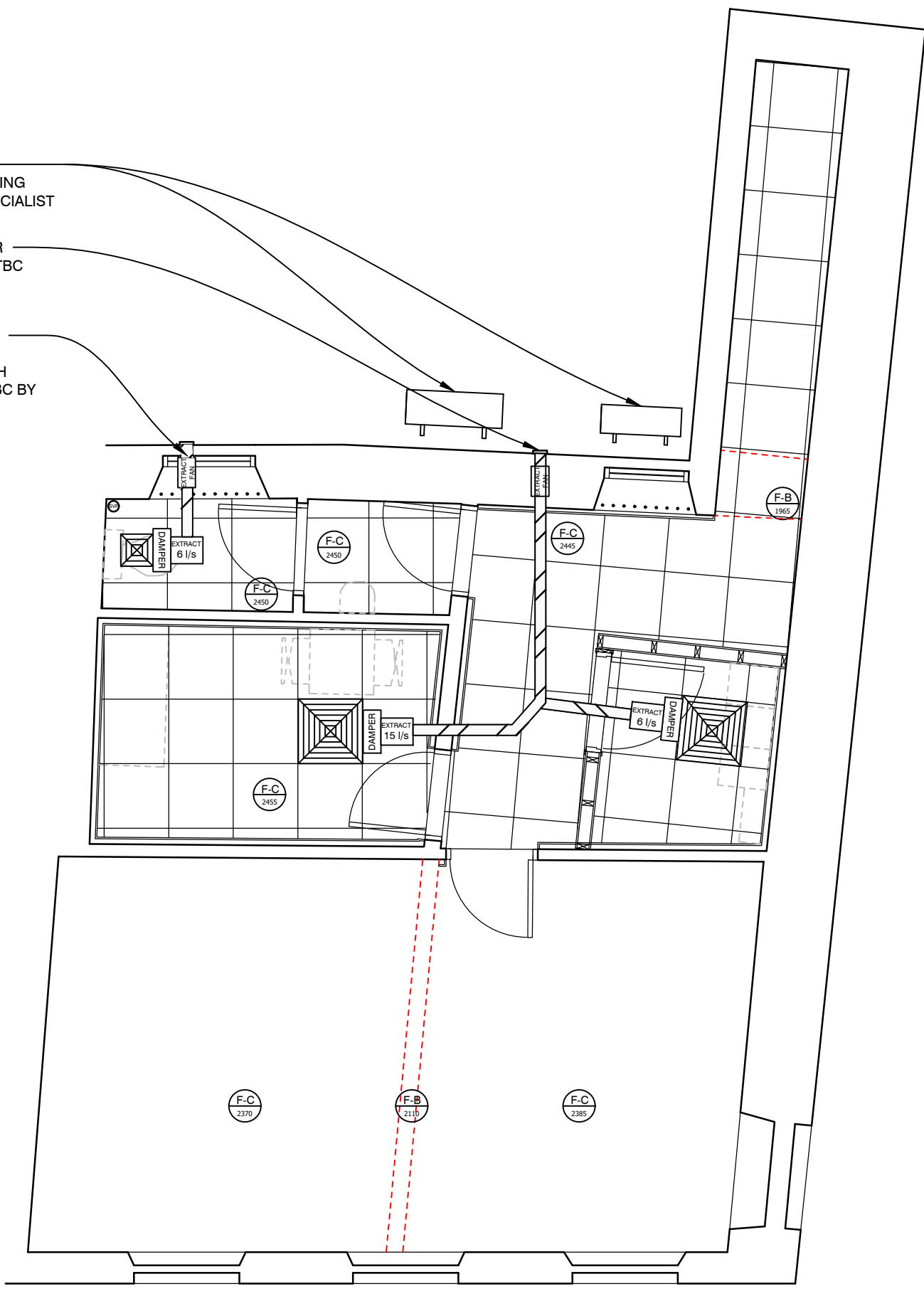


GROUND FLOOR - PROPOSED HVAC PLAN (1:50)



FIRST FLOOR - PROPOSED HVAC PLAN (1:50)

ELECTRICAL INSTALLATION

All electrical works are to comply with the IEE Wiring Regulations current edition & BS7671: current edition, all to be installed by a suitably qualified electrical engineer and to include for the design of the electrical installation as whole, as displayed upon the drawings, to include for all cable sizing, balancing of phases & the installation of all free issue electrical equipment. Install, test & commission the system to BS767 and supply upon completion an Electrical Installation Certificate.

The distribution board is to be to commercial standard Merlin Gerlin & to comply to BS5486, BSEN60439. MCB's to comply with BSEN 60898 & BSEN 60947 as for the kA capacity. The distribution board is to have 54 ways.

The light wiring system is to be free issue, the Flex Connections Flex 7 system complete with free issue light fittings as marked upon drawings. The installation to conform to the manufacturers details as indicated on drawings. Generally electrical accessories to be MK or Crabtree unless otherwise specified. The power installations are to be on radial circuits to avoid overloading. Sockets and power outlets to positions marked on drawings. Light and oven switches, fire control panel, a/c controls, fans, over door heater controls etc all located at central control point as marked on drawings.

EMERGENCY LIGHTING AND AUTOMATIC FIRE DETECTION

The emergency lighting system is to be installed to BS5266-1: current edition. The automatic fire detection system is to conform to BS5839-1: current edition. The locations for call points, heat and smoke detectors and emergency lights will be marked upon the drawings. Provide void smoke detection as and when required, to BS5839-1: current edition. The emergency lights are to be free issue. Upon completion of the emergency lighting installation the contractor is to supply an Emergency Lighting Construction Declaration Certificate and an Emergency Lighting Verification Certificate.

Upon completion of the automatic fire detection system the contractor is to supply a Fire Detection and Alarm System Installation Certificate. Fire alarm system control panel to be Citedel CB 2001/02 two or four zone panel, to suit size of premise, to EN54-2, manufactured by Control Equipment Ltd, available through

AIR CONDITIONING

1No AC cassette to FOH to be finished black and 2No white to BOH. Allow for collar to FOH one over mid floor unit. Air conditioning units to be supplied via Mitsubishi Electric Living Environmental Systems Ltd direct offices only and installed by authorised Greggs / Mitsubishi accredited installation partners only. The air conditioning units are to be 14kw heating/cooling to front of shop and 7.1kw heating/cooling to back of shop. The air conditioning units must be selected for the Mitsubishi Electric Power Inverter range and be suitable for low noise. No deviation from this specification will be considered unless written consent is given from Greggs directly. A wall mounted remote controller should also be provided for each air conditioning system. The remote controller will be capable of altering the following functions and information on the indoor fan coil unit: -

- On/Off
- Set point
- Fan speed
- Louvre position
- Timer settings
- Mode selection

The controller shall also be capable of displaying the following items: -

- On/Off
- Systems diagnostics
- Fault codes
- Status monitoring
- Operating mode
- Set point
- Fan speed
- Timer settings
- Louvre position

The installation partner to design & size layout, pipework, insulation & power as required, liaise with the principle contractor and others to satisfactorily complete the installation, units to be positioned as indicated on drawings, internal units to be ceiling or wall mounted detectors and emergency lights will be marked upon the drawings, external condensing units positioned to approved locations shown on drawings complete with rotary isolation switches, also include for all system drainage runs & pumps, forming & cutting of all holes & access ways and powder coated cages for condensing units if required. Control units to be wall mounted at the central control point.

MECHANICAL EXTRACTION & VENTILATION

Mechanical Extraction and ventilation systems, to positions indicated on the drawings are to be designed and installed in full compliance to the Chartered Institute of Building Services Engineers Guide; CIBSE B:2001, Heating, Ventilation and Air Conditioning and all relevant amendments. Electrical works to comply to current edition of IFF Regulations and installed by a competent engineer.

The oven canopy is to be formed in polished Stainless Steel (grade 430) with easy removable, and dishwasher cleanable Stainless Steel baffle filters.

Oven canopy size :-
1000 x 1500mm.

Allow exposed Oven Canopy to be clad in White Wallboard.

The oven extract to be formed in galvanised Steel ductwork, to HVAC standard DW144 - manufacture and installation of ductwork and DW172 - standard for kitchen ventilation in non domestic installations.

Ductwork to nominal size 315mm diameter or sized to suit installation with access panels to permit inspection and cleaning at maximum 2000mm spaces. The extract system to achieve 30 AC/hr. Include for all forming, jointing, connecting and supporting required for the duct system installation.

The extract fan to be a cased axial unit sized to suit ductwork formed in high grade galvanised steel with sickle blade impeller, the IP54 class F insulated motor and fan supported in a cylindrical case, primed with black polyester finish, single phase with external wiring terminal block, fan to be mounted with flexible couplings to minimise vibration noise.

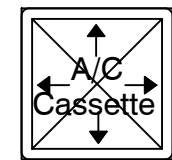
A mechanical extraction system is to remove air from other internal areas, inclusive of office, staffroom, changing rooms and WC. The minimum extract rates should be achieved;

- Office - 10 l/s
- Staff room - 15 l/s
- Changing room - 6 l/s
- Toilet - 6 l/s
- Above Fridge / Freezer - 20 l/s
- Oven Canopy - 30 Ac / hr

Flexible ducts are to conform to BS 474 parts 6, 7 and 20, is not to be kinked or flattened, changes in direction to be formed by long

SUSPENDED CEILING	
LEGEND	DESCRIPTION
	COLORTONE NEEVA BLACK TILES WITH BLACK CEILING GRID TILES: 1200 x 600mm TO FOH. DISABLED TOILET TO BE 600 x 600MM. SUPPLIED BY ARMSTRONG CEILINGS TEL: 0800 371 849 WEB: www.armstrongceilings.com
	BLACK TILES WITH BLACK CEILING GRID TILES: 600 x 600mm TO CUSTOMER WC ONLY. SUPPLIED BY ARMSTRONG CEILINGS TEL: 0800 371 849 WEB: www.armstrongceilings.com
	WHITE TILES WITH WHITE CEILING GRID TILES: 600 x 600mm TO BOH. SUPPLIED BY ARMSTRONG CEILINGS TEL: 0800 371 849 WEB: www.armstrongceilings.com

STANDARD LIGHTING SCHEDULE		
LEGEND	DESCRIPTION	QUANTITY
	Ceiling mounted P.I.R for entry lights.	12
	600mm Single LED Light.	1
	600mm Double LED Light	N/A
	1200mm Double LED Light	N/A
	1500mm Double LED Light	N/A
	Bulkhead Emergency Light	5
	Bottom Directional Emergency Exit Light	8
	600 x 600mm Modular Light Fittings	22
	Extract Grilles - 600X600mm Extract Grilles - 500X500mm Extract Grilles - 300X300mm	10 0 2



AIR CONDITIONING CASSETTE

ALL CEILING LIGHT FIXINGS / SPEAKERS / PIRS / CCTV AND HEAT DETECTORS TO BE FINISHED BLACK

REV	DESCRIPTION	DATE	NAME
-----	-------------	------	------



GREGGS Plc (NORTH)
GOSFORTH PARK BAKERY
GOSFORTH PARK WAY, LONGBENTON
NEWCASTLE UPON TYNE
NE12 8EF
Tel: (0191) 284 1411

Shop S Number & Name
S6653 CLEATOR MOOR, 53 HIGH ST

Title
PROPOSED HVAC

Site Address
53-54 HIGH STREET,
CLEATOR MOOR,
CA25 5AA

Gross Building Area 163.3 Sq m	Gross Sales Area 35 Sq m
-----------------------------------	-----------------------------

Drawing No. RNTH/S6653/05	Rev. -
------------------------------	-----------

Date 04.09.24	Scale 1:50 @ A1
---------------	-----------------

Drawn by HE	Scale Bar 0 500 1000 1500 2000 2500mm
Issued 09.09.24	SCALE 1:50