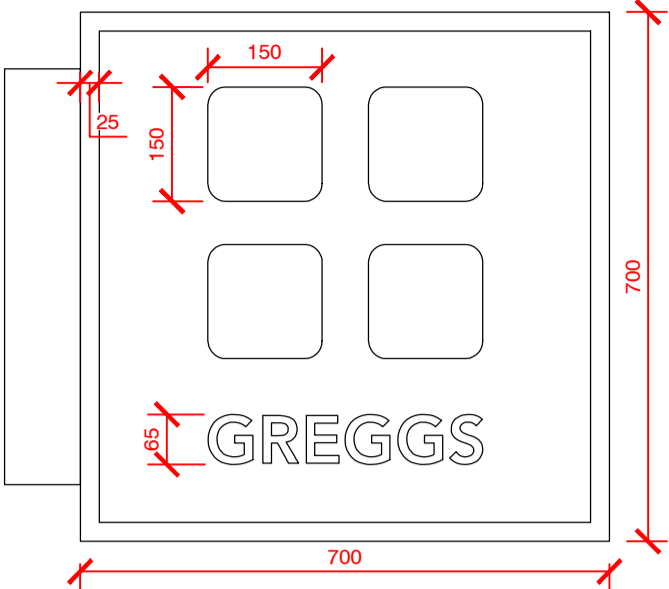
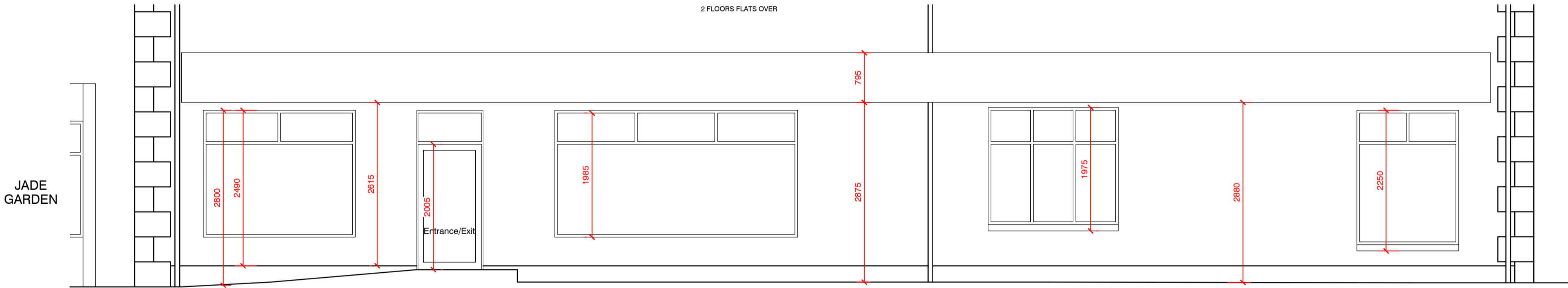


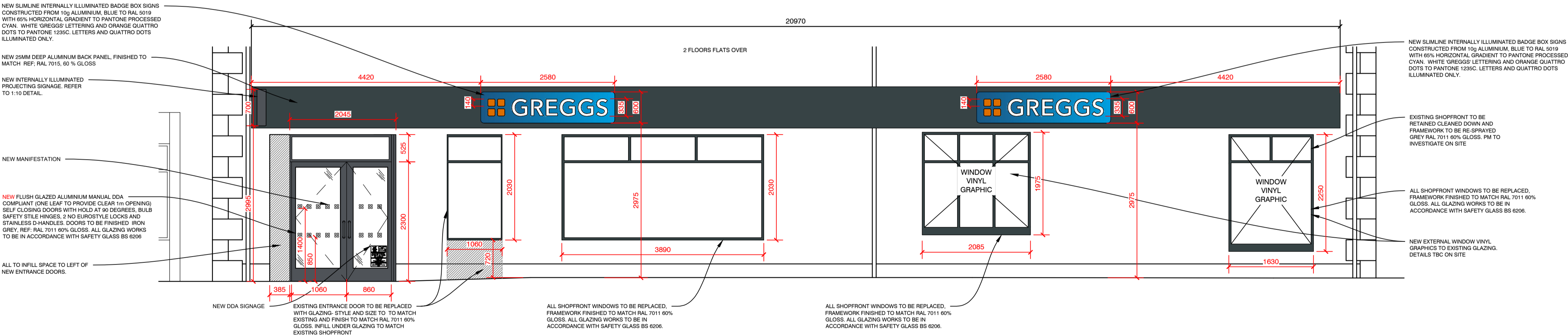
PROJECTING BOX SIGN; 700 X 700mm. CONSTRUCTED FROM 10g ALUMINIUM STOVE ENAMELLED GREY TO RAL 7016. CENTER PANEL STOVE ENAMELLED BLUE TO RAL 5019 WITH 60% HORIZONTAL GRADIENT TO PANTONE PROCESSED CYAN. 'GREGGS' LETTERING IN FRET CUT OPAL PERSPEX. QUATRO DOTS FRET CUT PERSPEX TO PANTONE 1235C. LETTERS AND QUATRO DOTS ILLUMINATED ONLY.



PROJECTING SIGN DETAIL (1:10)



EXISTING EAST ELEVATION 1:50



PROPOSED EAST ELEVATION 1:50

A	ENTRANCE DOORS ADJUSTED. NEW SHOPFRONT WINDOWS.	18.06.24	JR
REV	DESCRIPTION	DATE	NAME
<div><div><div></div></div><div>GREGGS</div></div>			
GREGGS Plc (NORTH) GOSFORTH PARK BAKERY GOSFORTH PARK WAY, LONGBENTON NEWCASTLE UPON TYNE NE12 8EF Tel: (0191) 284 1411			
Shop S Number & Name S6540 EGREMONT, 50 MAIN STREET			
Title PLANNING - SHOPFRONT			
Site Address 50/52 MAIN STREET, EGREMONT, CA22 2AB			
Gross Building Area 232 Sq m		Gross Sales Area 70.6 Sq m	
Drawing No. RNTH/S6540/04P			Rev. A
Date 13.05.24		Scale 1:50	@ A1
Drawn by ES	Scale Bar 0 500 1000 1500 2000 2500mm		
Issued 17.05.24	SCALE 1:50		

DO NOT RESCALE THIS DRAWING