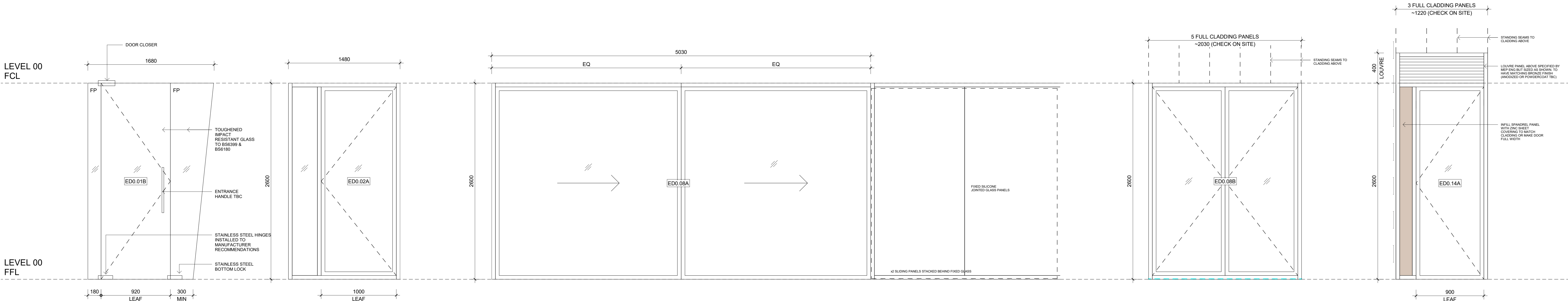


This drawing is to be read in conjunction with all other relevant technical information, including approvals, specifications and submittal information. Do not take from this drawing. Use only dimensions provided. All dimensions and levels to be checked on site and all discrepancies must be reported to the design author immediately. Responsibility cannot be accepted for alteration and/or deviation from this design without the prior acknowledgement of the design author. Any commercial decisions relating to this information must make due allowance for dimensional and area variation resulting from the design development and construction processes as well as the requirements of statutory authorities. This drawing is to be used only for the purposes indicated. This drawing is copyright and the property of Northmill Associates Ltd (NMA) and must not be reproduced without prior written agreement. Any intellectual property rights (IPR) relating to the design(s) described in this drawing belong to the originating designer and, where it is not NMA's design, the credit for the design or IPR is sought by the drawing author.

- Notes**
1. Read in conjunction with referenced information within the Architectural Tender Package along with that from supporting consultants and specialists is referred to in tender/contract documents.
 2. Any discrepancies within the documentation to be brought to the attention of the Contract Administrator/Employee Agent for clarification.
 3. All construction work related to the information presented in this drawing is to comply with statutory requirements (Building Regulations and related Planning Permissions, British Standards, Relevant Codes and Good Practice).
 4. Drawings based on survey information provided by Partner Surveys, the accuracy of which has not been checked. All dimensions and levels are to be confirmed on site prior to providing any materials, fabrication/manufacturer's production information or commencement of work on site.
 5. This drawing has been released as part of a 2 Stage Design and Build procurement process and is subject to further design development and construction information. Significant deviation from the standards set in this drawings along with other relevant technical information will not be accepted.



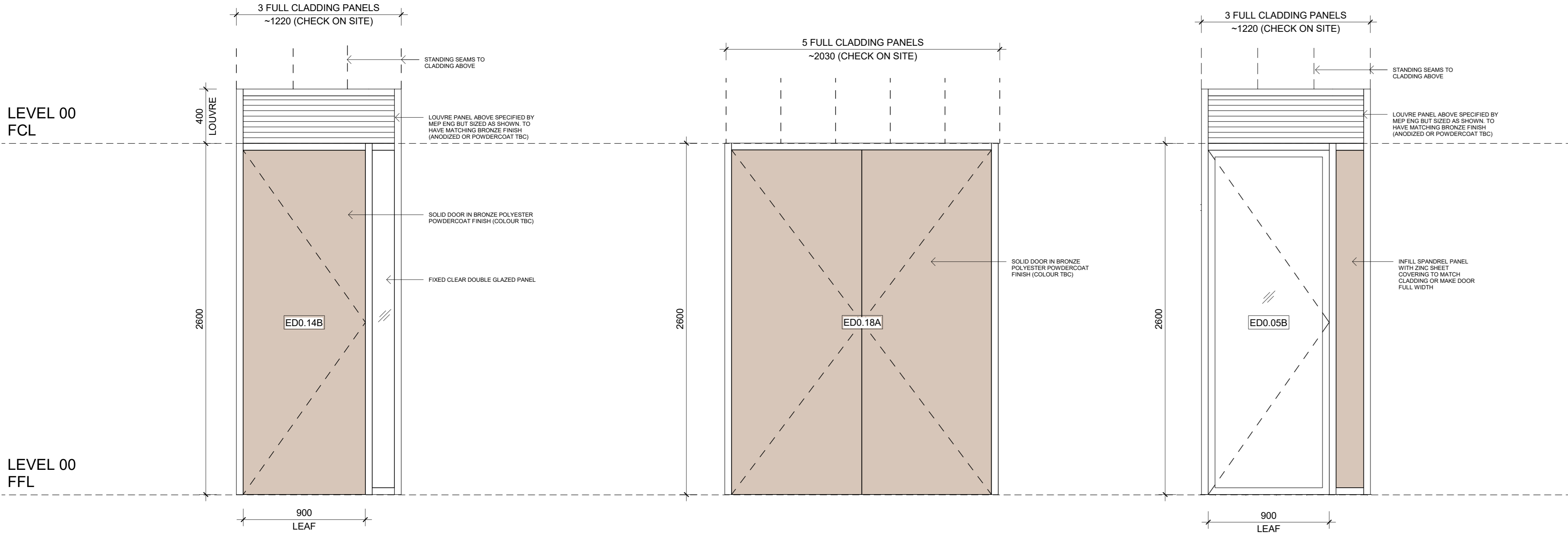
1 ED0.01B
1 : 20

2 ED0.02A
1 : 20

3 ED0.08A
1 : 20

4 ED0.08B
1 : 20

5 ED0.14A
1 : 20



6 ED0.14B
1 : 20

7 ED0.18A
1 : 20

8 ED0.05B
1 : 20

External Door Schedule									
Door Number	Description	Location	Elevation	Frame Type / Finish	Leaf Type / Finish	Fire Rating / Fire Escape	Acoustic Rating	Access Control	Comments
LEVEL 00 FFL									
ED0.01B	Frameless glazed single leaf hinged door with fixed glass panels both sides	Main Entry Lobby	South East	Frameless Glass	Toughened Clear Double Glazed	N/A	N/A	Key Lock	
ED0.02A	Frameless glazed single leaf hinged door with fixed glass panels both sides	Main Entrance Hallway - South	South West	Bronze Anodized Aluminium. Colour TBC	Clear Double Glazed	NR. FIRE ESCAPE	N/A	Key Lock	
ED0.05B	Frameless glazed single leaf hinged door with fixed glass panels both sides	Kitchen	South West	Bronze Anodized Aluminium. Colour TBC	Clear Double Glazed	NR. FIRE ESCAPE	N/A	Swipe Access	Louvre Above
ED0.08A	Glazed sliding stacking panels x2	Multi-Use Space	North East	Bronze Anodized Aluminium. Colour TBC	Clear Double Glazed	N/A	N/A	Key Lock	
ED0.08B	Frameless glazed single leaf hinged door with fixed glass panels both sides	Multi-Use - South	South West	Bronze Anodized Aluminium. Colour TBC	Clear Double Glazed	NR. FIRE ESCAPE	N/A	Key Lock	
ED0.14A	Frameless glazed single leaf hinged door with fixed glass panels both sides	Corridor	North East	Bronze Anodized Aluminium. Colour TBC	Clear Double Glazed	NR. FIRE ESCAPE	N/A	Key Lock	Louvre Above
ED0.14B	Solid single leaf hinged door with fixed glazed side panel	Corridor G	South West	Bronze PPC Aluminium. Colour TBC	Insulated Polyester Powdercoat Aluminium in Bronze Finish	NR. FIRE ESCAPE	N/A	Fire Escape	Louvre Above
ED0.18A	Solid single leaf hinged door with fixed glazed side panel	Plant Room	South West	Bronze PPC Aluminium. Colour TBC	Insulated Polyester Powdercoat Aluminium in Bronze Finish	N/A	N/A	Swipe Access	

NOTES:

DIMENSIONS SHOWN ARE INDICATIVE ONLY AND ARE TO BE CONFIRMED ON SITE

DOOR / GLAZING FRAME SYSTEMS TO BE CONFIRMED BY CONTRACTOR. PROFILES TO BE NO MORE THAN 50mm THICK

ALL BRONZE ANODIZED AND POWDERCOAT FINISHES TO BE A CLOSE MATCH TO ZINC CLADDING AND SHALL BE CONFIRMED OR APPROVED BY ARCHITECT

GLAZING TYPES TO BE CONFIRMED BY BUILDER AND SHALL MEET REQUIRED THERMAL AND SOLAR PERFORMANCE VALUES

ACCESS CONTROL, DOOR HARDWARE AND SIGNAGE TBC

ALL FIRE ESCAPE DOORS TO BE CONNECTED TO EXIT PUSH BUTTON & EMERGENCY BREAK GLASS. REFER M&E SPEC

01	TENDER 2 (STAGE 4) INTERIORS - PART 2	LG	05.03.2023
02	TENDER 2 (STAGE 4) FOR REVIEW - PART 1	LG	26.02.2023
Rev	Description	By	Date



Project
THE EDGE
Cumbria's Coastal Activities Centre
Whitehaven

Client
Whitehaven Harbour Commissioners

Drawing
External Door Schedule

Project No:	2402	Scale @ A0:	1 : 20	Date:	08.03.2021
Drawn:	Author	Checked:	IS	Status:	TENDER 2 REVIEW
Drawing No:		Revision:			
(31)100-5					01