

Wessex

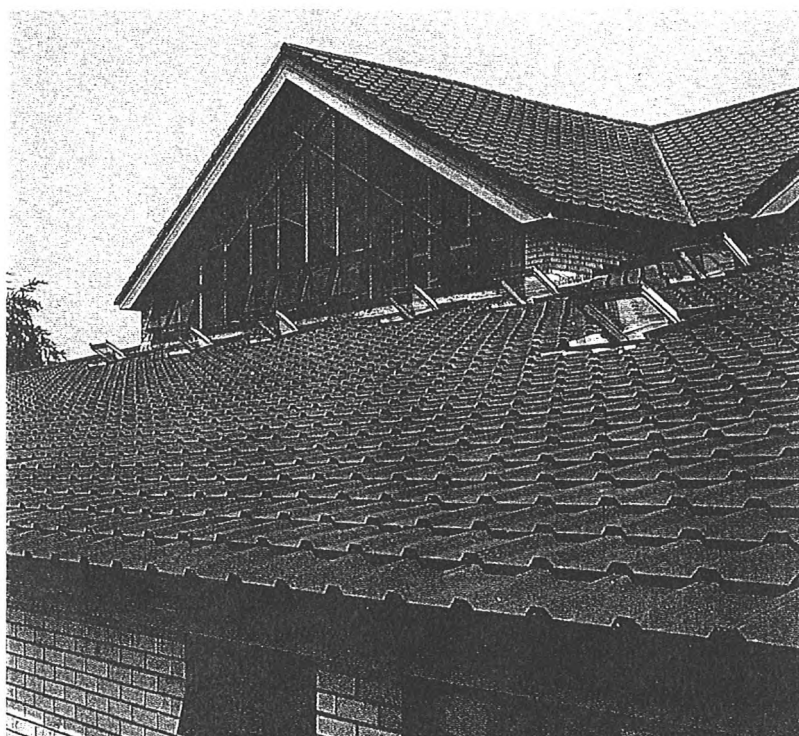
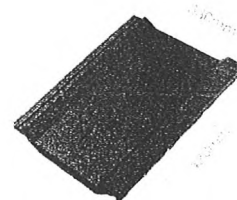
Technical data

Technical data

| | |
|----------------------------|---|
| Size of tile | 420mm x 330mm |
| Minimum pitch* | 15° |
| Maximum pitch | 90° |
| Minimum headlap | 75mm |
| Maximum gauge | 345mm |
| Cover width | 298mm (nominal) |
| Hanging length | 403mm (nominal) |
| Covering capacity (net) | 9.7 tiles/m ² at 75mm headlap 10.4 tiles/m ² at 100mm headlap |
| Weight of tiling (approx.) | 50 kg/m ² (0.49 kN/m ²) at 75mm headlap 53 kg/m ² (0.52 kN/m ²) at 100mm headlap |
| Battens required (net) | 2.9 lin./m ² at 75mm headlap 3.1 lin./m ² at 100mm headlap |
| Batten size recommended | 38 x 25mm for rafters/supports not exceeding 450mm centres (fixed to BS 5534) 50 x 25mm for rafters/supports not exceeding 600mm centres |
| Tile nails | 38mm x 3.35mm |
| Fixing clips | Eaves, verge and tile clips |

* The minimum recommended pitch and lap may be influenced by special circumstances, please refer to pages 26-27 of the Design Considerations section.

Tiles without nail holes should be laid below 25° rafter pitch and where required, should be clipped. Nail holed tiles should be used at rafter pitches of 45° and above. Please indicate if tiles are required with or without nail holes.



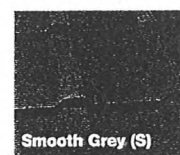
Wessex Smooth Grey, commercial development

Designed to shed water efficiently at pitches down to 15°, the Wessex has clean, simple lines with a pleasing minimalist style.

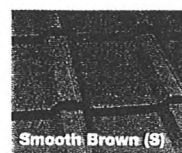
Wessex colour availability



**Old English
Dark Red (S)**



Smooth Grey (S)



Smooth Brown (S)

Key
(S) Smooth finish