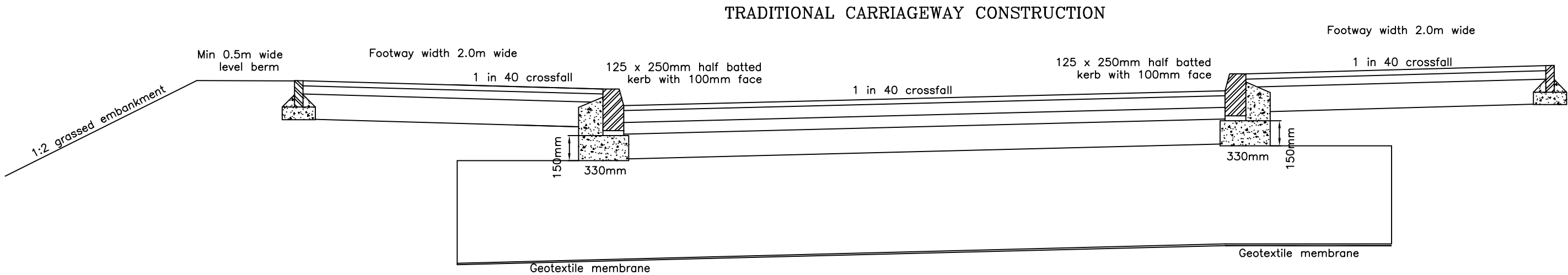


- TIMBER FENCE DETAIL (Not adopted)**  
Timber fence located around POS
- All timber shall comply with Specification for highway works 6th edition clause 304 and
  - CCA preservation to BS4072
  - Mails shall be 4mm x 100mm galvanised in accordance with the requirements of BS729
  - Rail section 38 x 87mm
  - Pain post section 2100 x 75 x 125mm
  - Height of top rail 900mm
  - Concrete foundation to posts shall largely depend on supporting earth, foundation to be generally 400x400x400mm, C10P

PC concrete kerbs, channel blocks and edgings BS1340:2003  
Concrete block pavers BS1338  
Sharp sand BS7533  
Type 1 stone BS1377  
Type 6F3 stone clause 613  
HRA55/14F SURF 40/60 DES EN 13108-4  
AC20 HDM BIN 40/60 DES EN13108-1  
AC32 HDM BASE 40/60 DES EN13108-1  
AC6 MED SURF 100/150 EN13108-1  
AC20 OPEN BIN 100/150 EN13108-1  
ST2 Concrete  
ST4 Concrete  
750x375 trapped gully pot BS5911  
Gully Grates BSEN124 C250  
Class B engineering bricks (solid)  
Class 1 sand cement mortar  
White lining BSEN 14 36



**FOOTWAY / 1.0m MARGIN CONSTRUCTION**

30mm AC 6 MED SURF 100/150 EN13108-1  
50mm AC 20 OPEN BIN 100/150 EN13108-1  
150mm Type 1 granular sub-base.  
225mm Type 6F3 material, clause 613

**DRIVE CROSSINGS**

30mm AC 6 MED SURF 100/150 EN13108-1  
50mm AC 20 OPEN BIN 100/150 EN13108-1  
225mm Type 1 granular sub-base.  
225mm Type 6F3 material, clause 613

**TRADITIONAL CARRIAGEWAY CONSTRUCTION**

255x125mm HB kerbs 100mm face

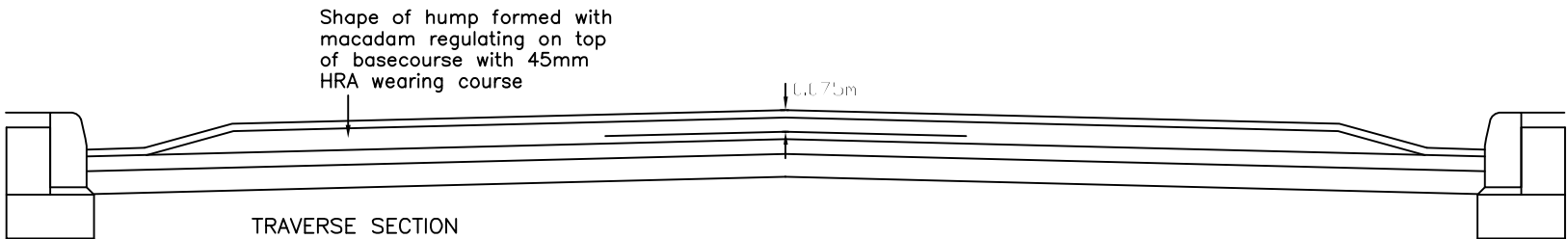
45mm HRA 30% with PCC surface course clause 911  
55mm AC20 HDM BIN 40/60 DES EN13108-1  
90mm AS32 HDM BASE 40/60 DES EN13108-1  
150mm Type 1 granular sub-base clause 803 and BS1377-BS 812  
600mm Type 6F3 material, clause 613

Formation to be exposed and tested for existing CBR value increase in capping layer and further testing to be agreed with Highway Inspector.  
Approved Geotextile membrane to be installed unless agreed otherwise with Highway inspector.

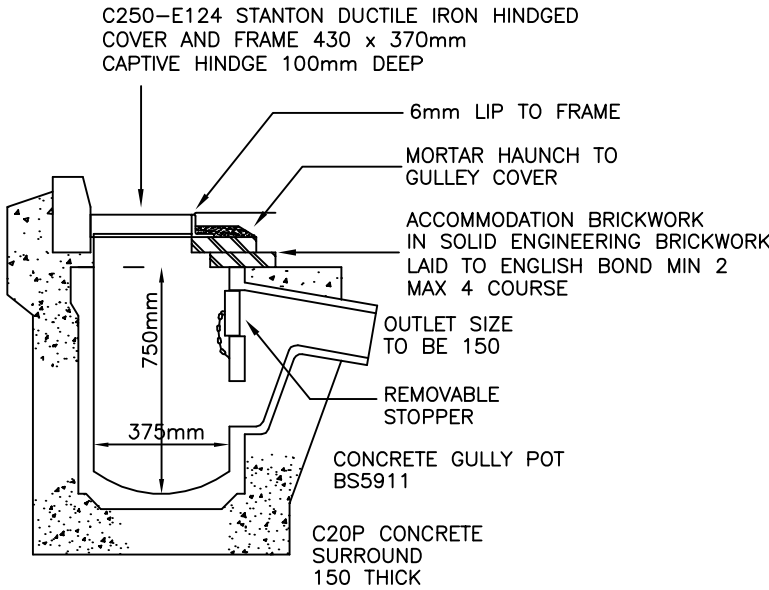
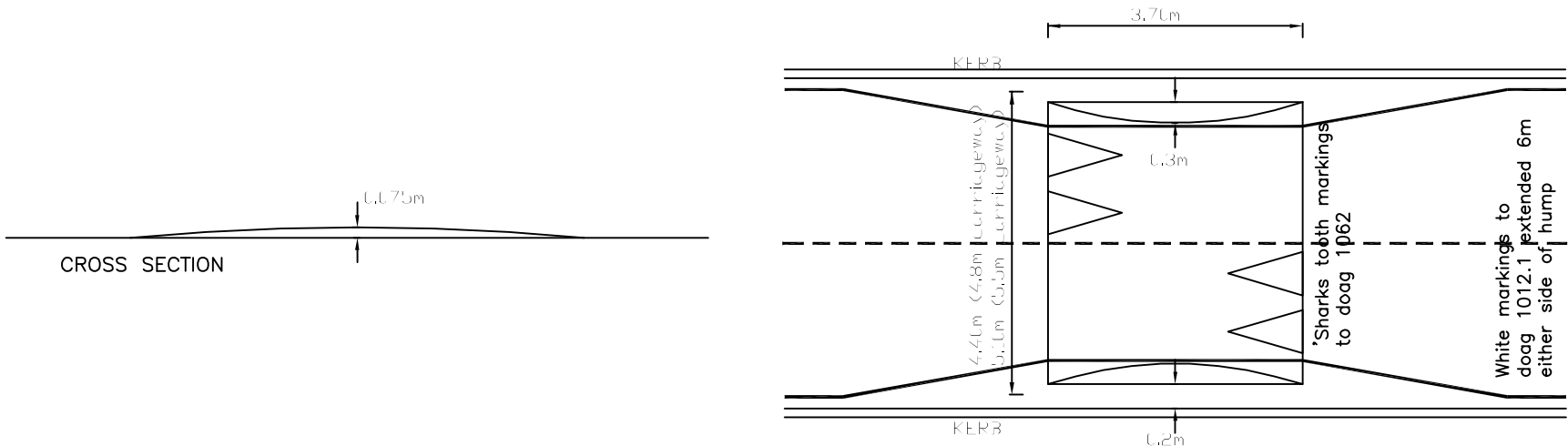
**CAPPING LAYER AND SUB BASE**

**CARRIAGEWAY CONSTRUCTION**

CBR value	Capping layer	Sub base
IESS THEN 2%	600mm	150mm
2% - 5%	350mm	150mm
5% - 15%	0mm	295mm
More then 15%	0mm	295mm



**ROUND TOP HUMPH WITH TAPERED SIDES**



**TYPICAL ROAD GULLY DETAIL**

CONCRETE Foe KERBING, GULLY AND HIGHWAY DRAINAGE DETAILS SHOULD BE ST4

- D. Footway / drive sub base revised lining and signing removed, see section 278 design 21-12-17  
C. Private fence detail added, signage revised 15-6-16  
B. Footway widened to 2m, footway / drive crossing construction revised, give way triangle added 5-6-16  
A. Construction section revised 23-3-16

**R.A.B.**  
**ENGINEERING**  
**DESIGN LTD**

21 BURNCROSS DRIVE  
SHEFFIELD S35 1DJ  
TEL.(0114)2570576

Highgrange Developments

Whitehaven Road/Mill Hill  
Highway construction

DRAWN BY rab

SCALE DATE Sept 15

DRAWING No 972-79 REV D

PRELIMINARY ONLY