

conservation sleeved kits - for imperial bricks

CONSERVATION SLEEVED

CONSERVATION CORE 140

CONSERVATION CORE 100

CORE KITS

SLEEVED KITS

Order Code: **PASS 230SQPGBK**



Internal Grille Option: Plaster

A plastic grille is supplied as standard, but alternative options are available and can be selected from here:

Plaster

External Colour: **PASS 230SQPGBK**, (Iron Effect)



Single Kit: **£122.40** inc. VAT (£102.00 ex. VAT)

INTERNAL GRILLE OPTIONS

SPECIFICATION

FEATURES & BENEFITS

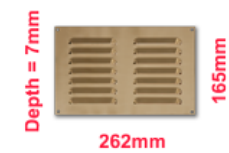
Plastic* - Most Popular



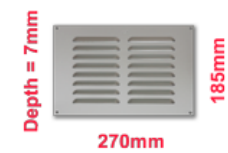
Plaster



Laquered Polished Brass**



Brushed Stainless Steel**



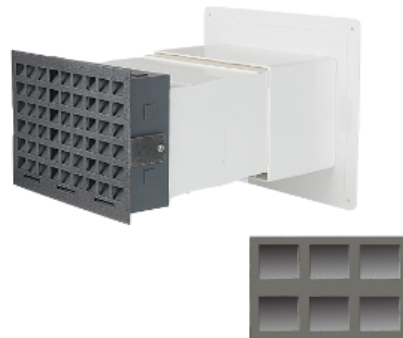
*Smaller plastic grille available, size 263 x 164 x 9mm depth.

**Denotes extra cost incurred.

Please refer to our **Technical Overview** for all of our versions of Passyfier®

Get Help or Advice!

Order Code: **PASS 230SQPGBK**



Internal Grille Option: Plaster

A plastic grille is supplied as standard, but alternative options are available and can be selected from here:

Plaster

External Colour: **PASS 230SQPGBK**, (Iron Effect)



Single Kit: **£122.40** inc. VAT (£102.00 ex. VAT)

Purchase 1 at **£122.40** (£102.00 ex. VAT) each
 Purchase 2 at **£116.40** (£97.00 ex. VAT) each
 Purchase 3 at **£112.80** (£94.00 ex. VAT) each
 Purchase 4 to 7 at **£110.40** (£92.00 ex. VAT) each
 Purchase 8 to 11 at **£108.00** (£90.00 ex. VAT) each

Please call 01799 528528 if ordering 12 or more kits for a lower unit price

INTERNAL GRILLE OPTIONS

SPECIFICATION

FEATURES & BENEFITS

Please refer to our **Technical Overview** for all of our versions of **Passyfier**®

Specification

Iron Effect Finish Over a Stainless Steel External Metal Airbrick

- Maximum water vapour transmission **2.3** litres per 24 hours
 - Maximum floor area per vent kit equals **20m²**
 - Main tube length (open), 340mm
 - Main tube length (closed), 240mm
 - To fit nominal 250mm x 175mm aperture.
 - Internal grilles in white plastic, plaster, brass & stainless steel with built in fly screens. Plastic version has extra coverage for ease of retro fitting.
 - Instructions are included
- +/- 5mm, imperial bricks are 75mm high and 225mm long (3 x 9").

Recommendations

1. Allow one vent per room with a maximum floor area not exceeding 20m².
2. In an open plan living room allow for two vents opposite each other.
3. Use the compatible wind blast cowl, with every vent in exposed or coastal locations. Use in conjunction with mechanical extraction in kitchens and bathrooms.
4. Kill any mould that exists on the floor, wall and ceiling surfaces with a good quality fungicidal wash before redecorating.
5. Install the Passyfier vent at a high level in retrofit and new-build applications if possible.
6. Use the Passyfier Sleeved Vent Kit wherever practical to maximise the transmission of water vapour.

Get Help or Advice!