

CONDITION 8 -
GSE IN-ROOF INTEGRATION
KIT FOR PV PANELS

GSE
Intégration

GSE IN-ROOF SYSTEM™

PORTRAIT EVOLUTION

BIPV SYSTEM FOR STANDARD PV MODULES

QUICK, AESTHETIC, LIGHTWEIGHT,
WATERPROOF AND COST-COMPETITIVE



MADE IN FRANCE

www.gseintegration.com

GSE IN-ROOF SYSTEM™

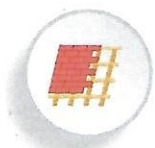
BENEFITS

- Economic: the most competitive system for roof renovations and new constructions
- Easy to install: 10 to 16 panels installed in 6 hours
- Flexible: achieve any desired configuration type (U-Shape, pyramid, etc...)
- Lightweight and space-saving: 116 half-frames per pallet

PRODUCT CERTIFIED IN MANY COUNTRIES

- Resistance to fire
- Completely waterproof: ensures complete watertightness of the PV system and the roof
- Optimal ventilation
- High mechanical resistance

TECHNICAL SPECIFICATIONS



Roof covering
All types



Slope
12° to 50°



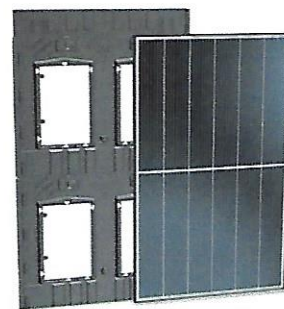
Weight
2.8 to 3.7 kg/m²



Temperature range
-30°C to 100°C



Material
PP - Aluminium
Stainless steel
(100% Recyclable)



UP TO 450 Wp:
21 available references

Module length : 1610 to 1990 mm
Module width: 990 to 1160 mm

UP TO 600 Wp:
New frames for XXL modules

Module length : 1990 to 2180 mm
Module width: 990 to 1305 mm

CERTIFICATIONS



■ ETN by ALPES CONTROLE: A27T2109



■ MCS Product Certification Certificate by KIWA: KIWA00041



■ System Performance Assessment



■ DIBt: Allgemeine bauaufsichtlichen Zulassung no. Z-14.4-817

FIRE TESTS EXPOSURE

■ BRoof T1



■ BRoof T2



■ BRoof T3



■ BRoof T4



CONNECTOR GSE Intégration

THE INSTALLER'S BEST FRIEND



TRAINING



TOOLS AND CALCULATION



HELP CENTER



DOCUMENTATIONS



155-159 rue du Docteur Bauer - 93400 Saint-Ouen - France

www.gseintegration.com



**Day of Choice** Delivery Available

- Rating : 440W
- 1762mm x 1134mm x 30mm
- 30 linear power warranty
- 25 year product warranty
- MC4 connectors

[View full description](#)Quick Find: **23404**Part Code: **JKM440N-54HL4R-B**Weight: **22.00 Kg**

Download

Compare

Email

Save

Overview

Specifications

Downloads

Jinko 440W Tiger Neo all black N-Type Monocrystalline with SMBB and HOT2.0 technology. Jinko's latest N-Type modules are loaded with features and technologies that deliver a high power performance and guarantee reliability and safety over a long lifetime.

- Ultra high power generation / ultra high efficiency ratio
- Enhanced reliability (30 year power warranty & -0.4% Linear degradation & 25 year product warranty)
- Lower LID/LETID
- Optimised temperature coefficient (resulting in higher power generation than equivalent P type cells)
- Low operating temperatures
- Optimised degradation
- Outstanding low light performance
- Exceptional PID resistance
- 25 year product warranty
- 30 linear power warranty

Other customers also bought



MC4 Female Connector - Single

MC4 Male Connector - Single

PV Label Kit

