

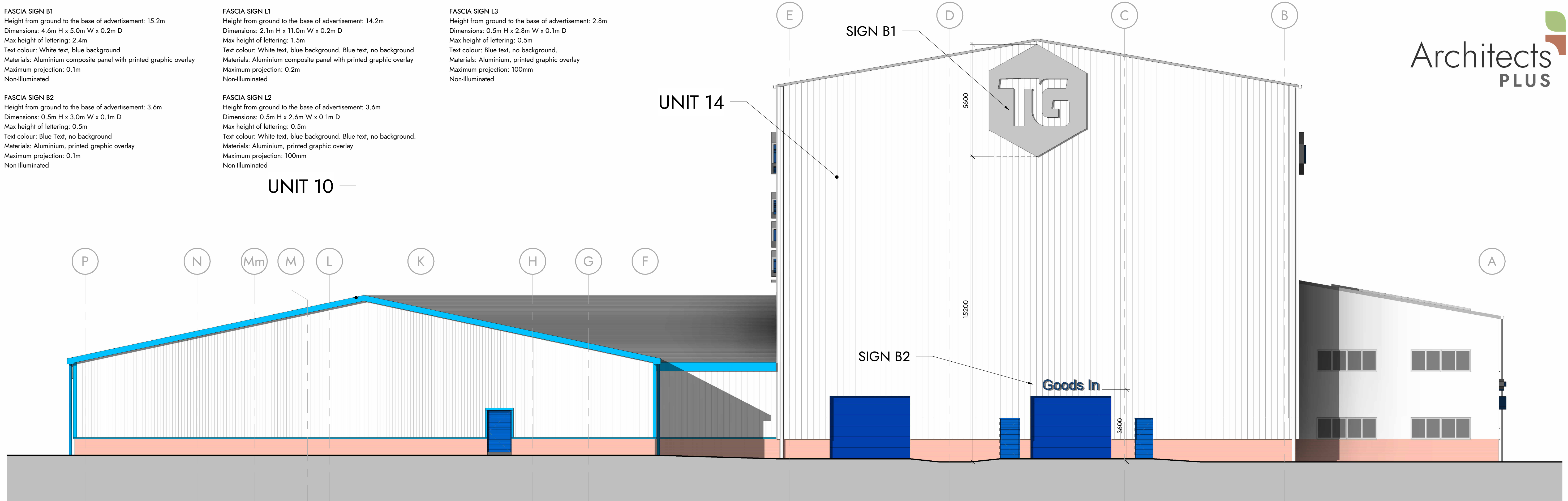
FASCIA SIGN B1  
Height from ground to the base of advertisement: 15.2m  
Dimensions: 4.6m H x 5.0m W x 0.2m D  
Max height of lettering: 2.4m  
Text colour: White text, blue background  
Materials: Aluminium composite panel with printed graphic overlay  
Maximum projection: 0.1m  
Non-Illuminated

FASCIA SIGN B2  
Height from ground to the base of advertisement: 3.6m  
Dimensions: 0.5m H x 3.0m W x 0.1m D  
Max height of lettering: 0.5m  
Text colour: Blue Text, no background  
Materials: Aluminium, printed graphic overlay  
Maximum projection: 0.1m  
Non-Illuminated

FASCIA SIGN L1  
Height from ground to the base of advertisement: 14.2m  
Dimensions: 2.1m H x 11.0m W x 0.2m D  
Max height of lettering: 1.5m  
Text colour: White text, blue background. Blue text, no background.  
Materials: Aluminium composite panel with printed graphic overlay  
Maximum projection: 0.2m  
Non-Illuminated

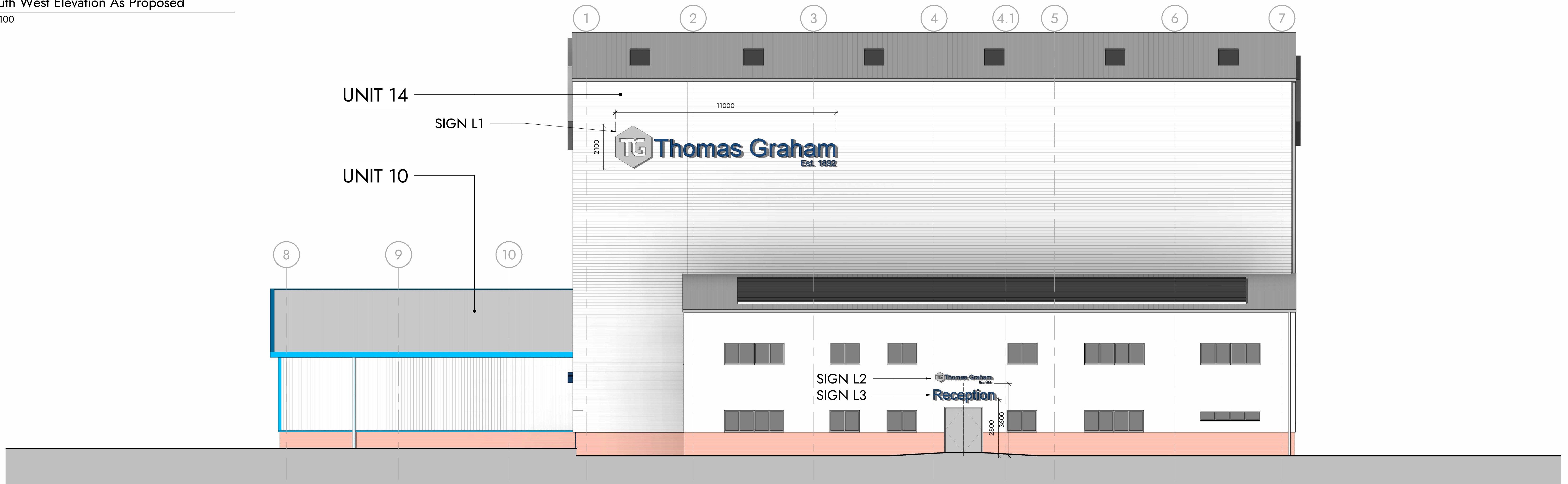
FASCIA SIGN L2  
Height from ground to the base of advertisement: 3.6m  
Dimensions: 0.5m H x 2.6m W x 0.1m D  
Max height of lettering: 0.5m  
Text colour: White text, blue background. Blue text, no background.  
Materials: Aluminium, printed graphic overlay  
Maximum projection: 100mm  
Non-Illuminated

FASCIA SIGN L3  
Height from ground to the base of advertisement: 2.8m  
Dimensions: 0.5m H x 2.8m W x 0.1m D  
Max height of lettering: 0.5m  
Text colour: Blue text, no background.  
Materials: Aluminium, printed graphic overlay  
Maximum projection: 100mm  
Non-Illuminated



South West Elevation As Proposed

1 : 100



South East Elevation As Proposed

1 : 100

## Proposed S. East & S. West Elevations Units 10 & 14, Bridge End Industrial Estate

0m 2m 4m 6m 8m 10m  
VISUAL SCALE 1:100 @ A1

This drawing is to be read in conjunction with all related drawings. Dimensions must be checked and verified on site before commencing work or producing shop drawings. The originator must be notified immediately of any discrepancy. This drawing is copyright and remains the property of Architects Plus, and may not be reproduced in any way without written consent from Architects Plus.

Suite 3, Carlyle's Court, St Mary's Gate, Carlisle, Cumbria, CA3 8RY

ap@architectsplus.co.uk

01228 515144

WWW.ARCHITECTSPUS.CO.UK

Registered Office  
Suite 3, Carlyle's Court, St Mary's Gate,  
Carlisle, Cumbria, CA3 8RY

Company Registration  
Architects Plus (UK) Limited  
Registered in England no. 4221140

A		Signage update	LC		20/05/2025
Revision	Description		Drawn	Approved	Date
Project			Client name		RIBA stage
Units 10 & 14, Bridge End Industrial Estate			Thomas Graham & Sons Ltd		4 - Technical Design
Date	Drawn by	Scale @ A1	Drawing number	Revision	
13/03/2025	LC	1 : 100	23034-PL22	A	