






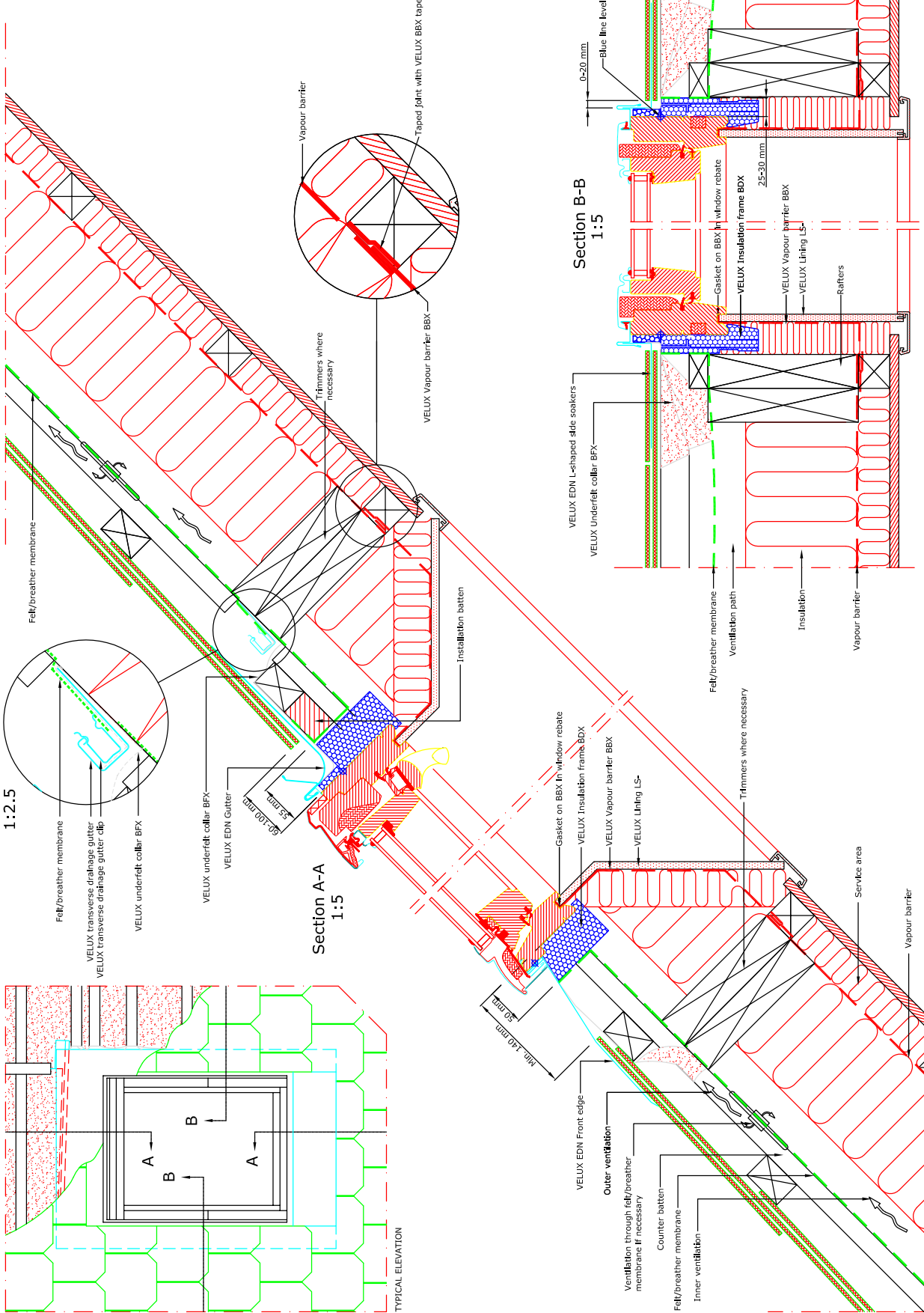



- VELUX Products:
-  GGL 130x50P
 -  EDN 200x50P
 -  BFX
 -  BDX
 -  BBX
 -  LS-
- Roof covering:
-  SLATES < 8 mm



	VELUX Company Ltd Woodside Way Glenrothes, Fife KY7 4ND tel: +44 (0) 1592 778 225	VELUX centre-pivot roof window GGL single installation into natural slate EDN flashing kit - recessed install into natural slate up to 8mm thick <i>All dimensions are in millimetres where shown</i>	Latest revision: NOTE! When installing VELUX roof windows, flashings and accessories, please ensure compliance with building regulations and British/European standards where necessary. This detail represents the principles of a typical installation only and the design and specification of the final detail is the responsibility of others.	Date: January 2014 Rev no: Rev date: Drawn: PJH	File name: GGL-EDN-0114-1104 Scale: 1:5 approx. @ A3
	© VELUX GROUP © VELUX & VELUX logo are registered trademarks This drawing is the property of the VELUX Group and is not to be copied, reproduced or published in whole or in part without written consent from VELUX AIS				