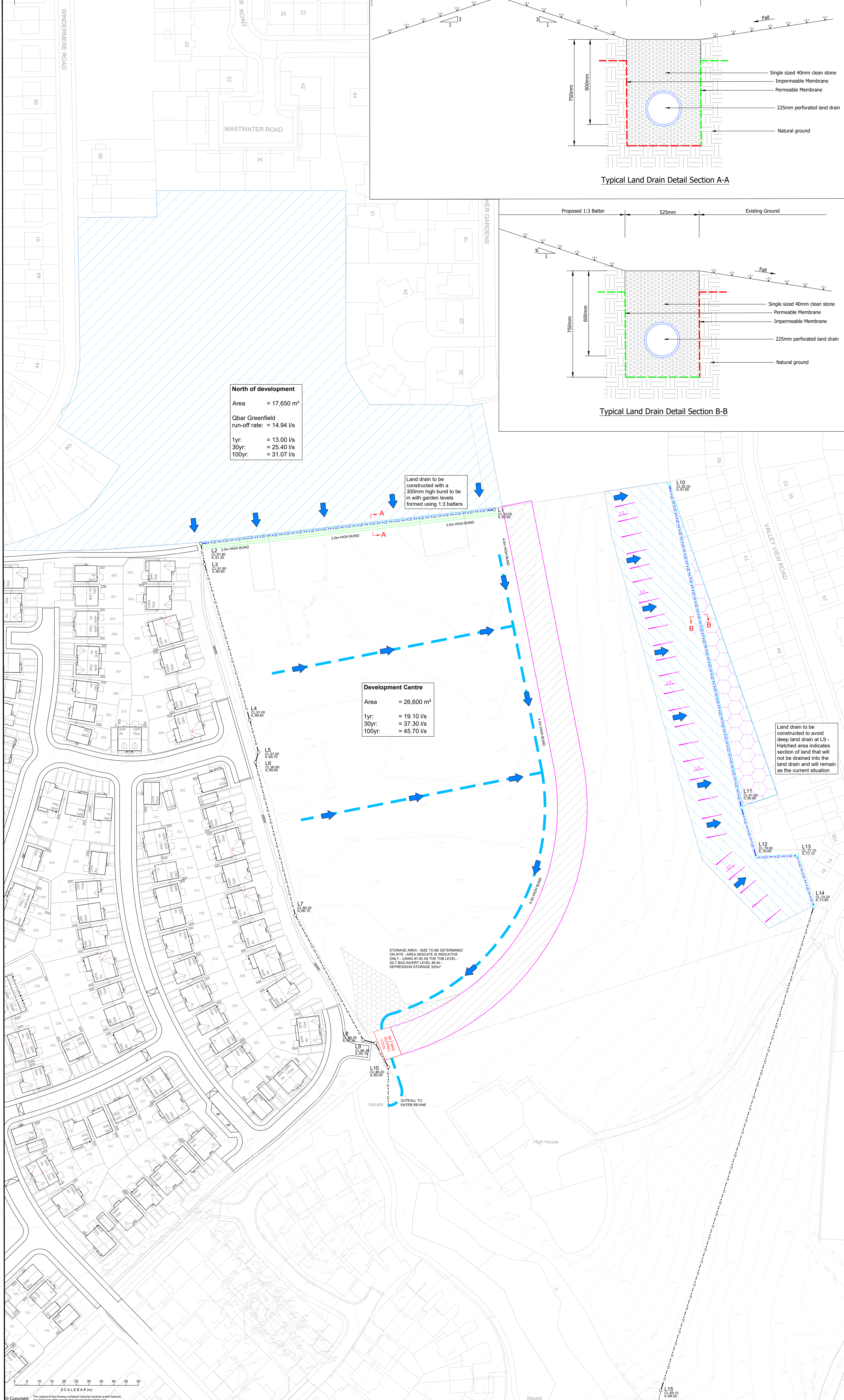
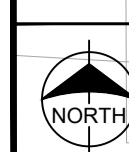


DO NOT SCALE



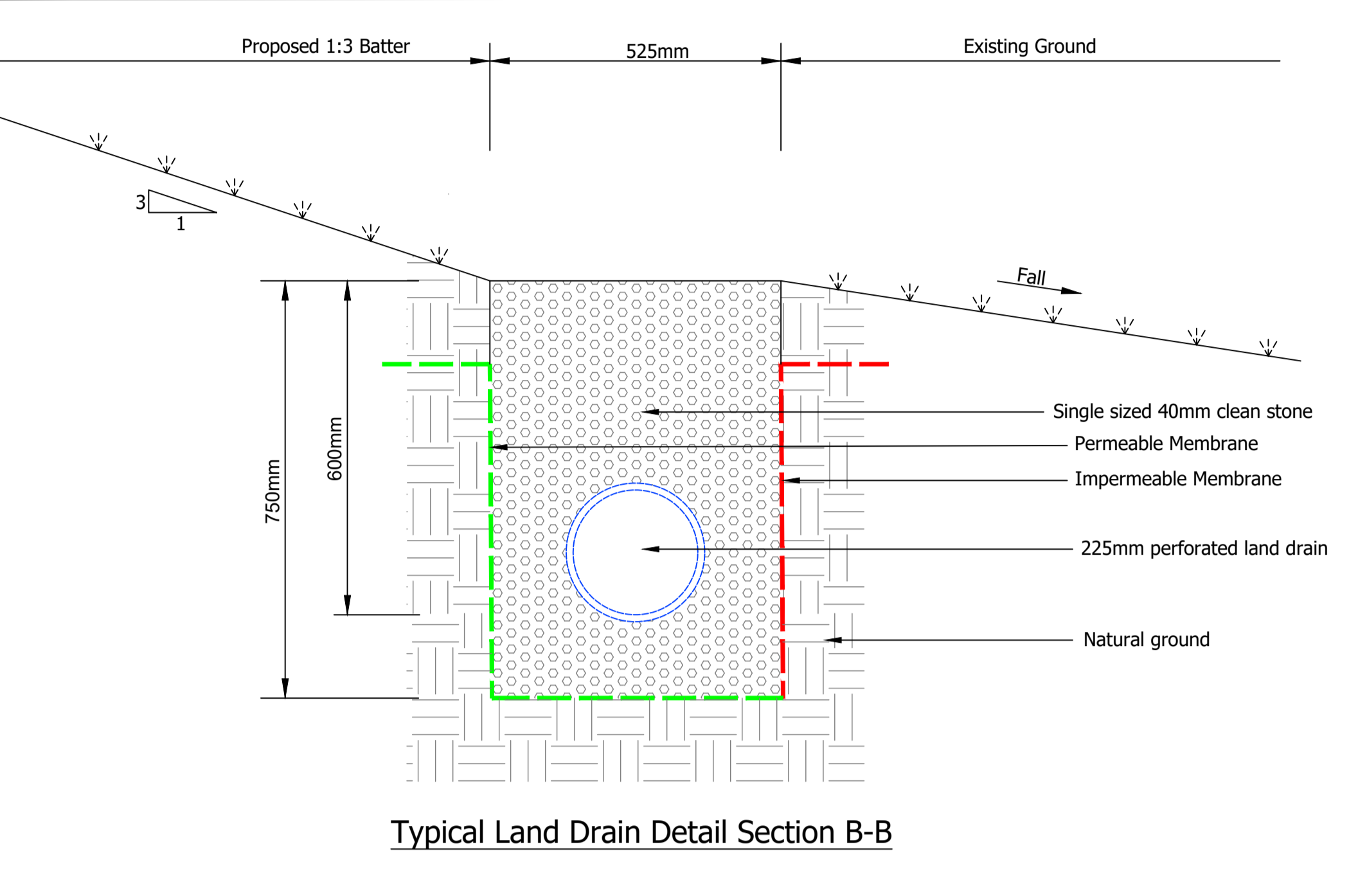
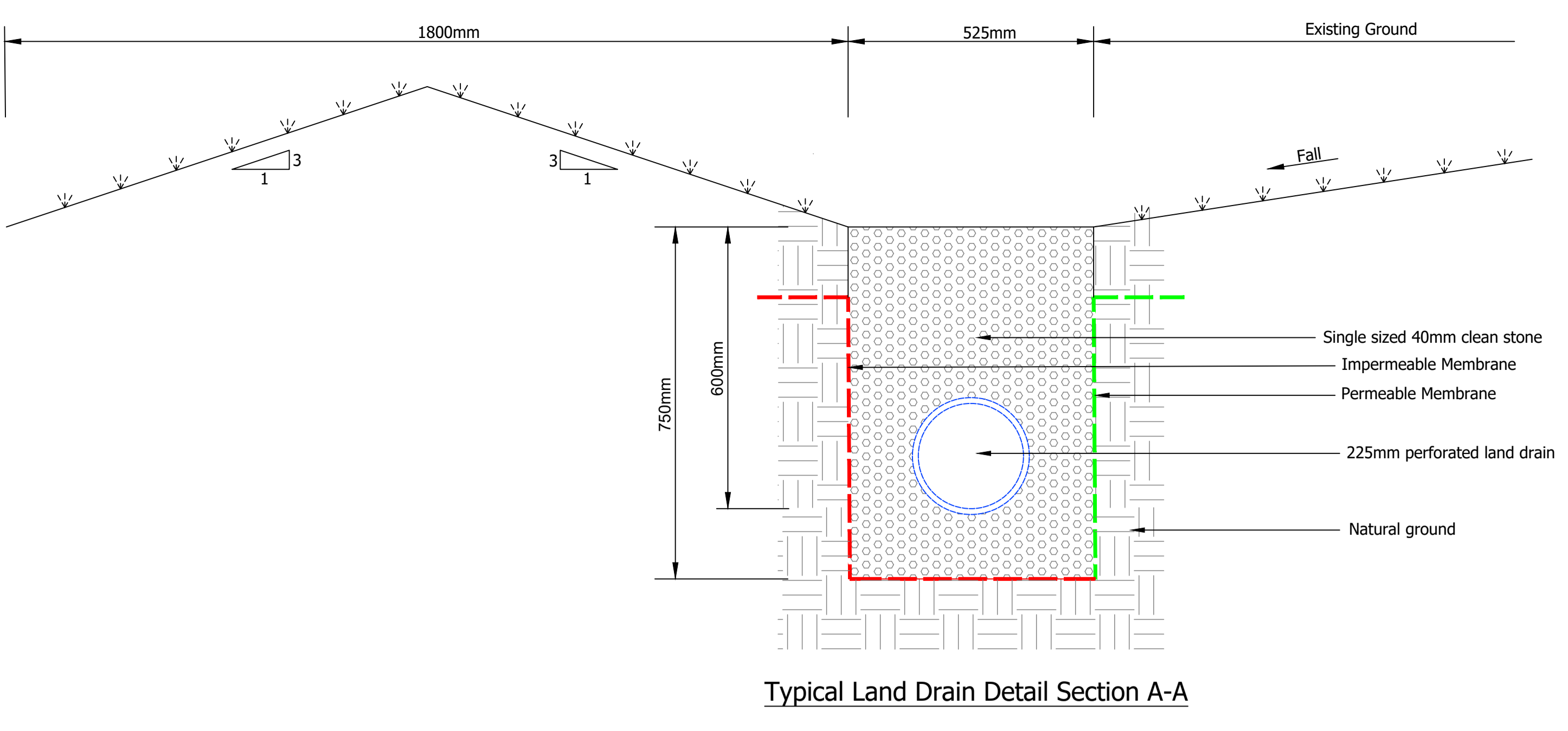
North of development
 Area = 17,650 m²
 Qbar Greenfield run-off rate: = 14.94 l/s
 1yr: = 13.00 l/s
 30yr: = 25.40 l/s
 100yr: = 31.07 l/s

Development Centre
 Area = 26,600 m²
 1yr: = 19.10 l/s
 30yr: = 37.30 l/s
 100yr: = 45.70 l/s

STORAGE AREA - SIZE TO BE DETERMINED ON SITE - AREA INDICATE IS INDICATIVE ONLY - USING 87.00 AS THE TOP LEVEL - SET BACK INVERT LEVEL 86.40 - DEPRESSION STORAGE 325m³

Land drain to be constructed with a 300mm high bund to tie in with garden levels formed using 1:3 batters

Land drain to be constructed to avoid deep land drain at L9 - Hatched area indicates section of land that will not be drained into the land drain and will remain as the current situation



Legend

| | |
|--|----------------------|
| | 225mmØ Land Drain |
| | 225mmØ Carrier Drain |

STRATEGY

| | | | | |
|------|----------|---|-----|-------|
| Rev. | Date | Revision | By | Appd. |
| D | 02.08.22 | Updated to suit client comments | JAR | AJ |
| C | 08.07.22 | Updated to suit revised planning layout | PW | AJ |
| B | 13.05.22 | Updated to suit planning comment | PW | AJ |
| A | 11.05.22 | Updated to suit revised planning layout | JAR | AJ |

coopers
 chartered consulting engineers

Tel: 01244 684010
 Email: admin@coopers.co.uk
 Web: http://coopers.co.uk

Park House
 Sandpaper Court
 Chester Business Park
 Chester
 CH4 5QU

Story HOMES

Project: **DEMENSE FARM, WORKINGTON, CUMBRIA.**

Title: **Proposed New Land Drainage**

| | | |
|----------------|-------------|----------|
| DRAWING NUMBER | SCALE at A0 | 1:500 |
| DATE | DRAWN | 27.04.22 |
| CHECKED | JAR | |
| REVISION | By | AJ |
| | Appd. | D |