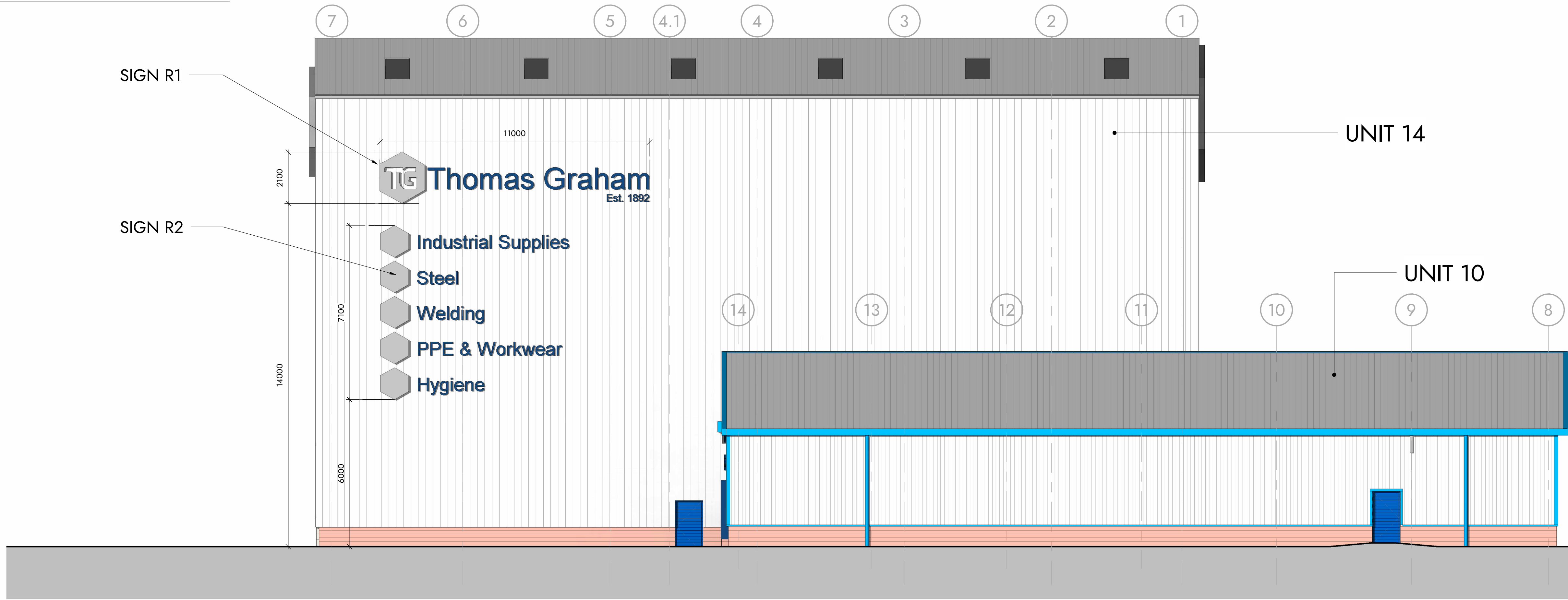


North East Elevation As Proposed

1 : 100



North West Elevation As Proposed

1 : 100

FASCIA SIGN F1
Height from ground to the base of advertisement: 15.3m
Dimensions: 4.5m H x 4.0m W x 0.2m D
Max height of lettering: 1.9m
Text colour: White text, blue background
Materials: Aluminium composite panel with printed graphic overlay
Maximum projection: 0.1m
Non-illuminated

FASCIA SIGN F2
Height from ground to the base of advertisement: 4.06m
Dimensions: 2.1m H x 11.0m W x 0.1m D
Max height of lettering: 0.9m
Text colour: White text, blue background. Blue Text, no background
Materials: Aluminium, printed graphic overlay
Maximum projection: 0.1m
Non-illuminated

FASCIA SIGN F3
Height from ground to the base of advertisement: 3.1m
Dimensions: 0.5m H x 4.0m W x 0.1m D
Max height of lettering: 0.5m
Text colour: Blue Text, no background
Materials: Aluminium, printed graphic overlay
Maximum projection: 0.1m
Illuminated, 4m strip floodlight installed below the sign

FASCIA SIGN R1
Height from ground to the base of advertisement: 14.0m
Dimensions: 2.1m H x 11.0m W x 0.2m D
Max height of lettering: 1.5m
Text colour: White text, blue background. Blue text, no background.
Materials: Aluminium composite panel with printed graphic overlay
Maximum projection: 0.2m
Illuminated, with "halo" style illumination, static.

FASCIA SIGN R2
Height from ground to the base of advertisement: 6.0m
Dimensions: 6.5m H x 10.0m W x 0.1m D
Max height of lettering: 0.8m
Text colour: Blue text, no background.
Materials: Aluminium panel with printed graphic overlay
Maximum projection: 0.1m
Non-illuminated

Proposed N. East & N. West Elevations Units 10 & 14, Bridge End Industrial Estate

0m 2m 4m 6m 8m 10m
VISUAL SCALE 1:100 @ A1

This drawing is to be read in conjunction with all related drawings. Dimensions must be checked and verified on site before commencing work or producing shop drawings. The originator must be notified immediately of any discrepancy. This drawing is copyright and remains the property of Architects Plus, and may not be reproduced in any way without written consent from Architects Plus.

Suite 3, Carlyle's Court, St Mary's Gate, Carlisle, Cumbria, CA3 8RY | ap@architectsplus.co.uk | 01228 515144

WWW.ARCHITECTSPUS.CO.UK

Registered Office
Architects Plus (UK) Limited
Carlisle, Cumbria, CA3 8RY

Company Registration
Architects Plus (UK) Limited
Registered in England no. 4221140

Drawing		Status	
Proposed N. East & N. West Elevations		PL - Planning	
Project	Client name	RIBA stage	
Units 10 & 14, Bridge End Industrial Estate	Thomas Graham & Sons Ltd	4 - Technical Design	
Date	Drawn by	Scale @ A1	Revision
13/03/2025	LC	1 : 100	A