

PLANTING SCHEDULE			
Type	Key	Specification	No/SQ.M.
TREES			
Acer pseudoplatanus	AP	RB 14-16cm	N/A
Betula pendula	BP	RB 8-10cm	N/A
Carpinus betulus fastigiata	CB	RB 8-10cm	N/A
Crataegus prunifolia	CP	RB 8-10cm	N/A
Malus Golden Hornet	MG	RB 8-10cm	N/A
Prunus 'Pink Perfection'	PP	RB 8-10cm	N/A
Sorbus aria Lutescens	SL	RB 8-10cm	N/A
Sorbus auc. 'Sheerwater Seedling'	SA	RB 8-10cm	N/A
Taxus baccata	TB	80-100cm C25	N/A
SPECIMENS			
Amelanchier lamarckii	AL	C10	N/A
Phormium tenax Veriegata Sundowner	PS	C10	N/A
Pinus mugo	PM	C10	N/A
Syringa vulgaris	SV	C10	N/A
SHRUBS & HERBACEOUS			
For all C2 read C2 or C3			
Bergenia cordifolia	Bc	C2, 20-30cm	5
Ceanothus 'Autumnal Blue'	Ca	C2, 30-40cm	3
Cistus Silver Pink	Cs	C2, 30-40cm	3
Euonymus fortunei 'Emerald Gaiety'	Ee	C2, 20-30cm	5
Hebe rakaiensis	Hr	C2, 20-30cm	3
Hebe 'Autumn Glory'	Hg	C2, 20-30cm	3
Hebe 'Blue Gem'	Hb	C2, 20-30cm	3
Hebe marjorie	Hm	C2, 20-30cm	3
Heuchera mic. 'Palace Purple'	He	C2, 20-30cm	5
Potentilla Goldfinger	Pt	C2, 20-30cm	5
Rosemary officinalis prostratus	Ro	C2, 20-30cm	3
Senecio sunshine	Ss	C2, 20-30cm	3
Skimmia Rubella	Sr	C2, 20-30cm	3
Spiraea japonica 'Goldflame'	Sj	C2, 20-30cm	3
Viburnum davidii	Vd	C2, 20-30cm	3
Vinca minor Atropurpurea	Vm	C2, 20-30cm	4
ORNAMENTAL HEDGE			
Griselinia littoralis	GLH	C15 90-100cm	2/m
Prunus lusitanica	PLH	C15, 90-100cm	3/m
Elaeagnus ebbingei	EEH	C10, 80-90cm	3/m

TOPSOIL CULTIVATION In accordance with BS 3882. Apply glyphosate herbicide prior cultivation and allow the recommended period before further action. Ensure ground is free draining by breaking up subsoil and installation of land drainage as required. Do not work the soil in frozen or waterlogged condition. Remove any debris and stones greater than 50mm from surface and cultivate to suitable tilth for planting. Rake surface to achieve required level flush with adjacent paving for turf and 50mm below for planting to allow for mulch layer and smooth flowing contours for open space areas without hollows or soft areas. Topsoil depths to be minimum 150mm for grass and 450mm for planting and at least 300mm of suitable subsoil beneath the topsoil layer. Site topsoil to be supplemented with imported topsoil in accordance with BS 3882. Shrub beds in grass areas to be neatly cut to layout shown.

PLANTING Plant material shall conform to the National Plant Specification and be healthy, vigorous specimens, well rooted but not pot bound, free from pests and disease, hardy and undamaged by transport operations in accordance with HTA 'handling and establishing landscape plants'. Planting and turfing to be in accordance with BS 3936 and 4428. Plant species substitutes will be permitted to accommodate availability and to include stock of particular good quality in nursery provided these are of a similar habit, size, colour, value etc and that they are **approved in advance** by the Landscape Architect. Native species to be local provenance. Bare root and rootballed plants to be planted between November and March. Backfill of planting holes and tree pits to be excavated topsoil with 25% by volume tree and shrub planting compost. Shrub pits to be generally 300 x 300 x 300mm or 75mm wider and deeper than the root spread. Tree pits to be 900 x 900 x 600mm or 150mm wider than the root spread. Stakes to be two 75mm diameter pointed stakes driven until firm and trimmed to 900mm above G.L. with 50 x 100mm crossbar screwed to stakes. Rubber tree cushion nailed to crossbar and rubber tree belting nailed to secure tree. Single 75mm diameter stake for bare-rooted trees with rubber tree belting with spacer. For hedge plants 60cm + high 50mm diameter short basal stakes driven at 45 degrees with rubber tie. Apply slow release fertiliser (16:10:10) at rate of 100g/ sq.m. to planting areas and 250g per tree. Thoroughly water planting.

PLANTING DENSITIES/ SETTING OUT Refer to the Planting Schedule for densities. Where a bed is indicated as mixed species on the plan, the area should be divided equally between the species shown and the relevant density for that species applied to that proportion of the bed. Taller species to the rear of the bed and smaller species to the front planted in bold groups of single species and not mixtures unless clearly requested on the plan annotations.

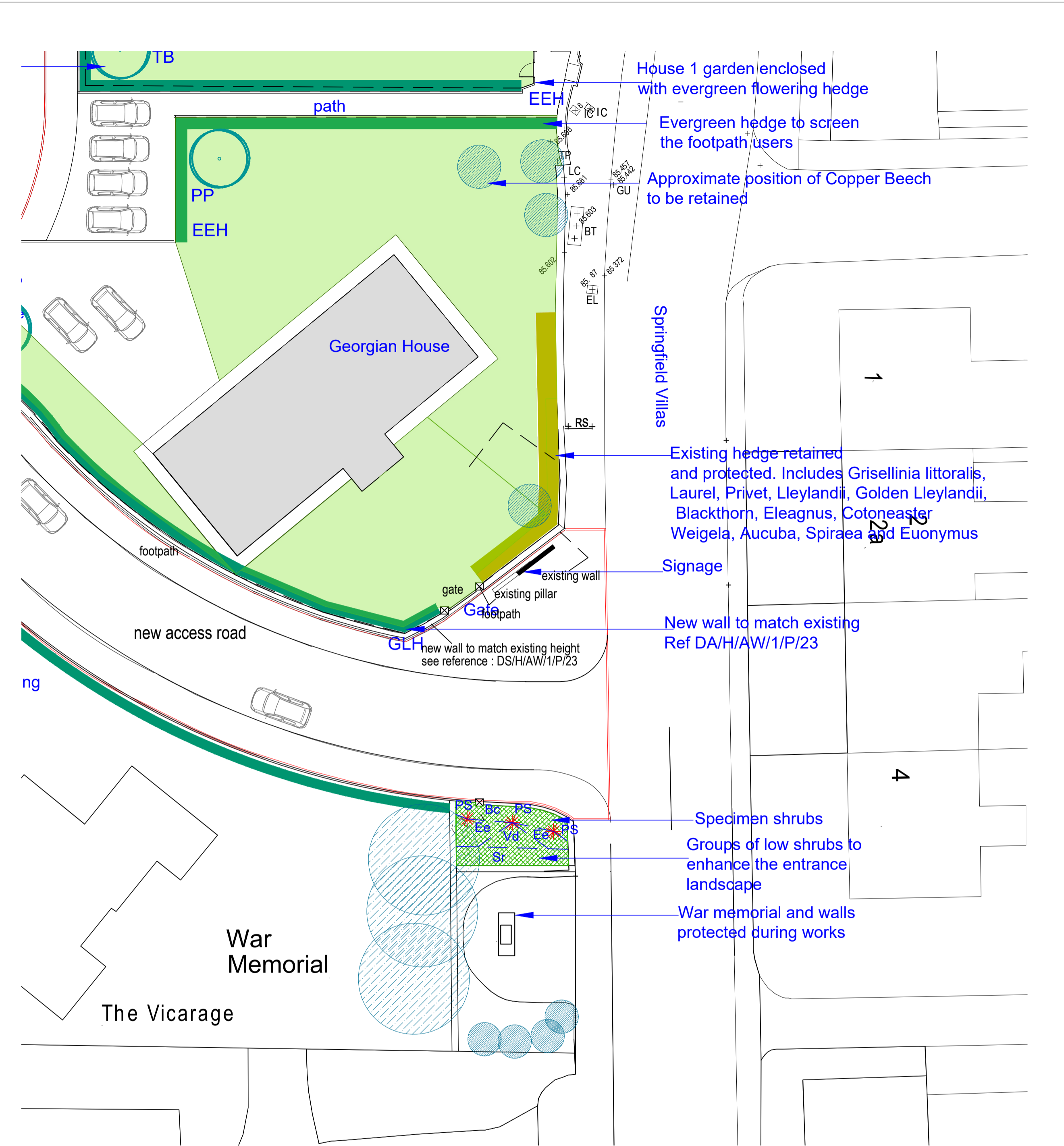
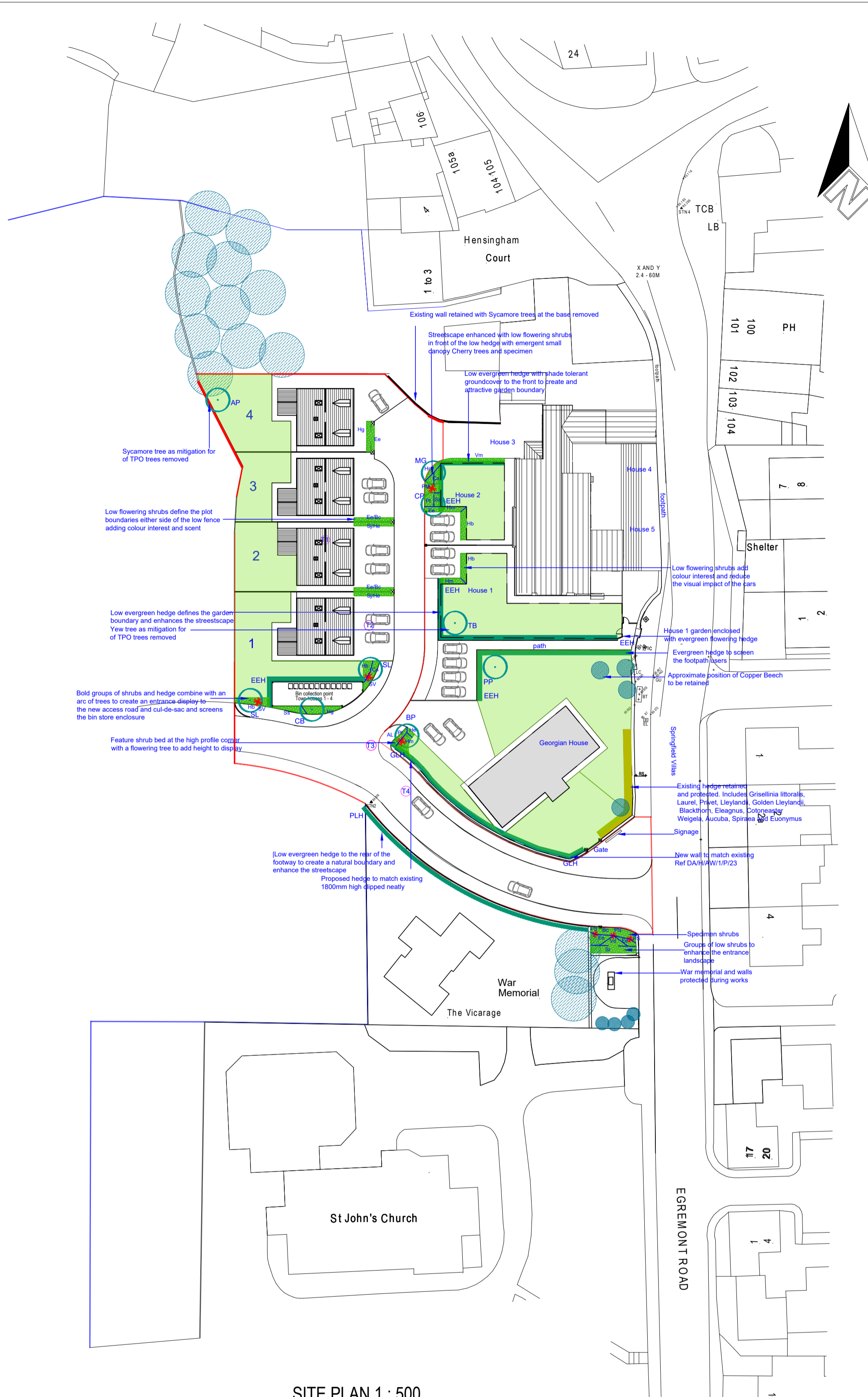
TREE RABBIT GUARDS If rabbit activity is noted in the area and guarding is authorised each bare-rooted native plant hedge plant to receive a 12/14 weight 900mm cane and 60cm clear spiral guard. Trees to receive 90cm spiral guard. If extensive rabbit activity is observed rabbit fencing to ornamental areas will be required as directed by the Landscape Architect.

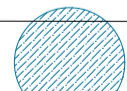

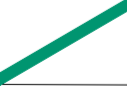



MULCH Spread 50mm layer of general purpose bark mulch, free from large sticks, and debris over all shrub areas, 800mm wide strips for hedging and 800mm diameter circles for tree pits in grass with neatly trimmed edge.

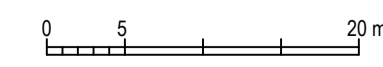
TURFING Following cultivation preparation specified above supply and lay Rolawn Medallion turf or similar approved with staggered joints close butted to uniform levels to finish 25mm above adjacent paving levels once well tamped down. Use sharp sand spread on surface to achieve fine tuning of levels. Thoroughly soak turf on completion and ensure regular watering is arranged until the turf has rooted. Do not turf in waterlogged or frozen conditions.

SEEDING AMENITY GRASS. Following cultivation preparation specified above apply Cropwise low maintenance amenity mix or similar approved at a rate of 35gms/ sq.m. and roll with quad or hand drawn ballast grass roller. Apply water with sprinkler hose in dry conditions to ensure germination. Levels to be flush with adjacent paving following firming and settlement of topsoil. Further stone-picking, top-dressing and re-seeding of bare patches to ensure uniform, level grass is established. Re-roll as required at first cut stage.

LANDSCAPE MAINTENANCE. Any plants which fail within 5 years to be replaced in the season following failure to the original specification. Check and adjust stakes and ties every month, and remove stakes in year 5 when trees are suitably stable. Prune trees and shrubs once each year - formative prune to encourage good habit. Apply fertiliser once in Spring each year to grass 40gms/ sq.m. Apply fertiliser once in Spring each year to shrubs 20gms/ sq.m - Osmocote slow release. Top up bark mulch to 50mm depth annually. Check for pests and diseases - treat as required. Water as required all landscape areas. Mow grass 18 times annually and remove arisings, trim edges. Apply selective herbicide and moss killer to grass as required. Re-seed, top dress and aerate lawns as required to maintain grass in good condition. Cut and rake off wildflower grass twice annually. Collect litter from all landscape areas monthly. Apply Glyphosate herbicide to hard paved areas as required.



-  EXISTING TREE
-  EXISTING HEDGE
-  PROPOSED HEDGE
-  PROPOSED TREES
-  PROPOSED SPECIMEN SHRUB
-  PROPOSED TURF



Rev A 08 02 24 Phase 2 town houses divided and bin store added BW

Westwood
landscape

CHARTERED LANDSCAPE ARCHITECTS
www.westwoodlandscape.co.uk

Hensingham House, Whitehaven

Client **Thomas Milburn Property Ltd**

Landscape Plan

Number **WW/L01 A Phases 1 & 2**

Scale **1:200 1:500 @ A1**

Date/ drawn **13.05.23 BW**