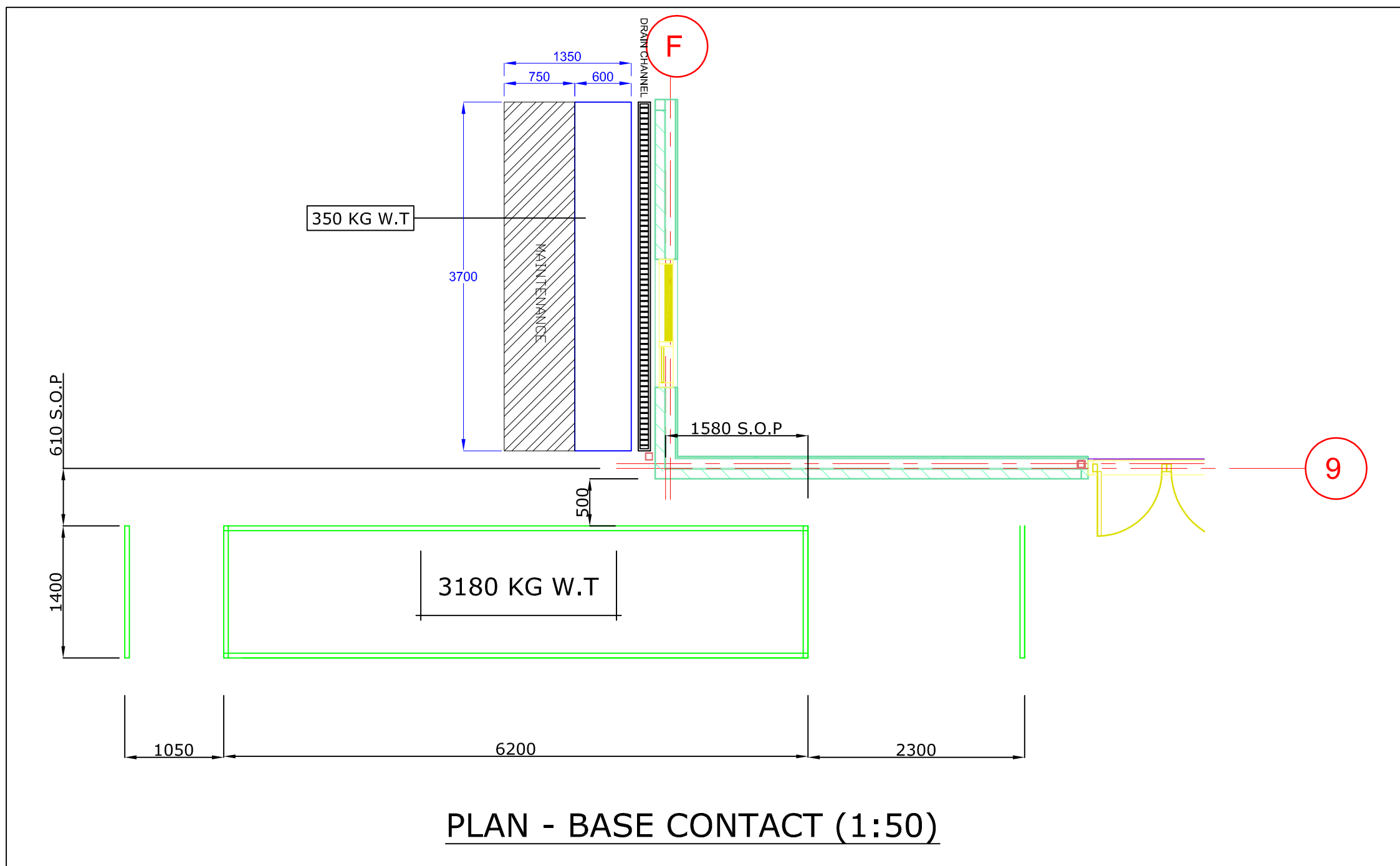
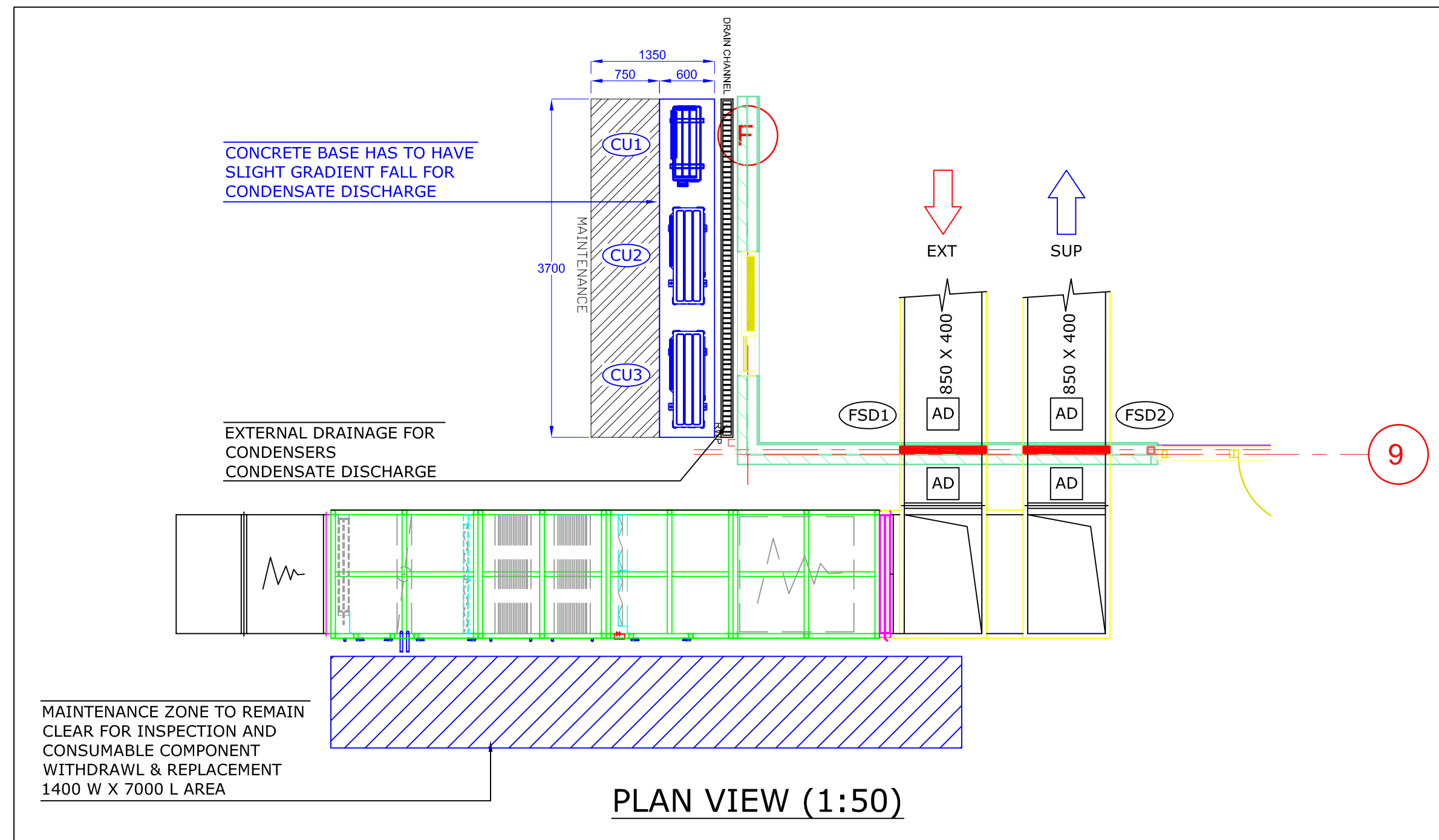
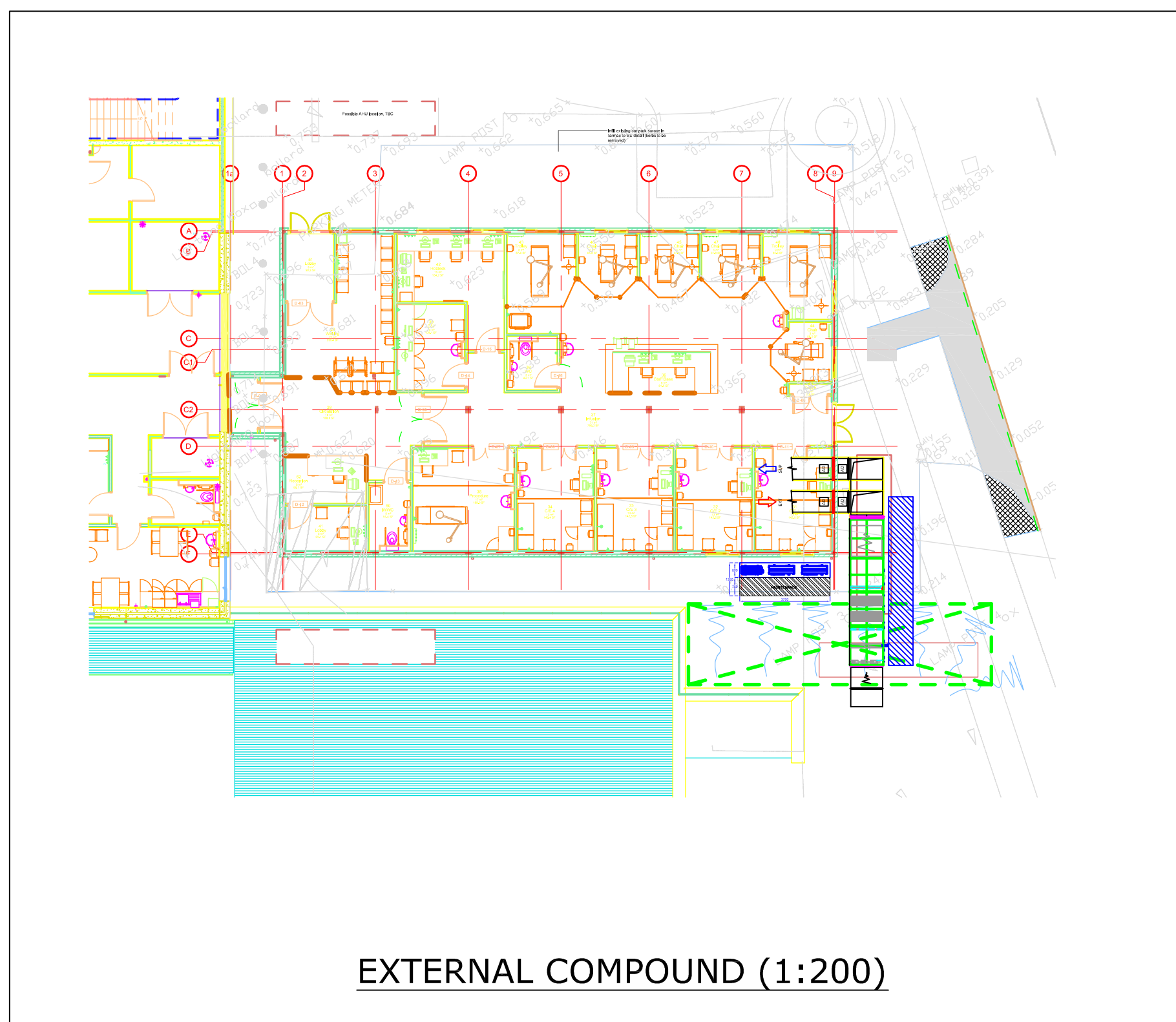
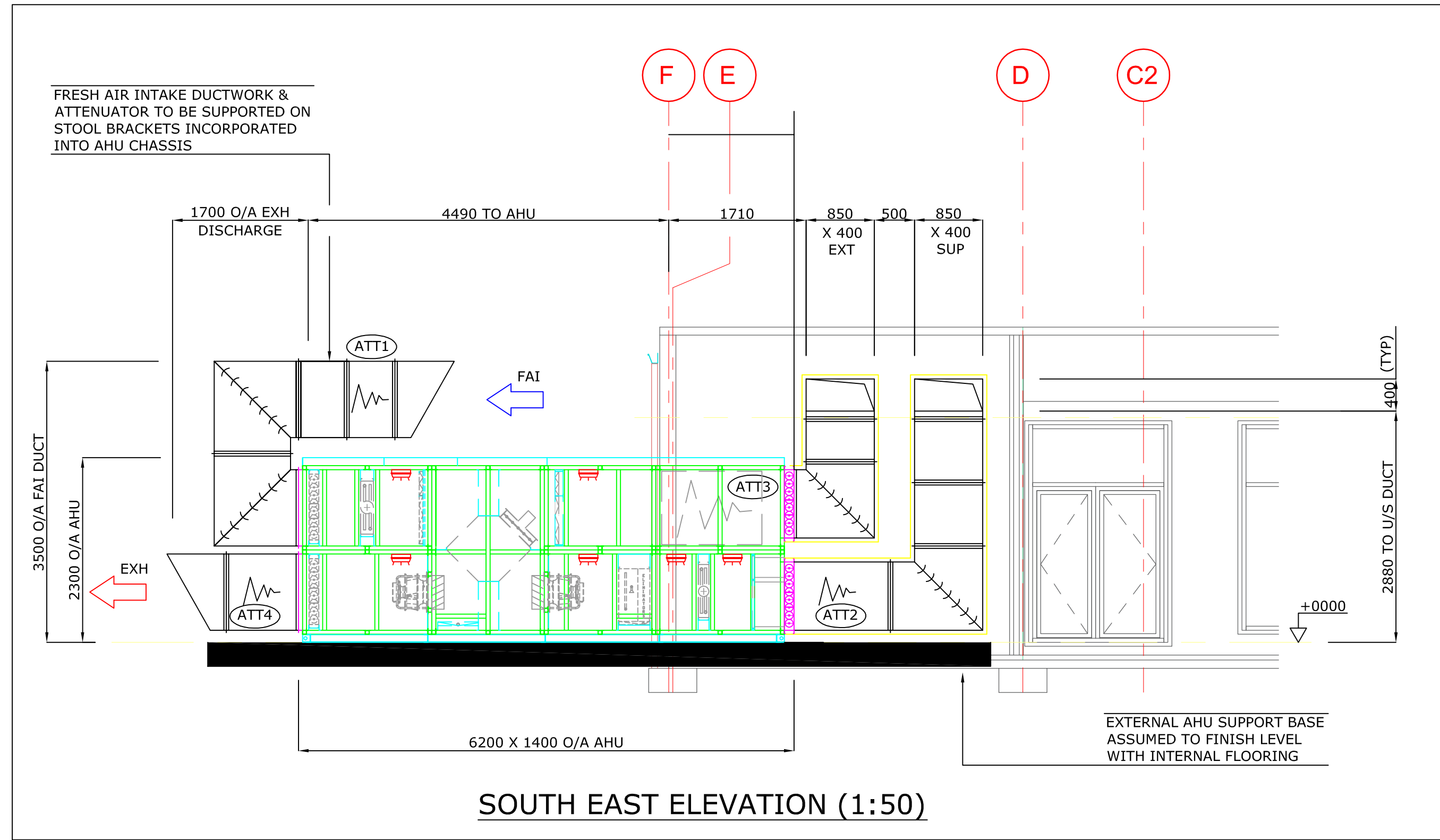


AIR HANDLING UNIT SCHEDULE												
REF	MANUFACTURER	FUNCTION	CONTROL	SPECIFIC FAN POWER W/L/S	ELECTRICAL SUPPLY FAN	ELECTRICAL EXTRACT FAN	LPHW FROST PRE-HEATER	LPHW RE-HEATER	PLATE HEAT RECOVERY	DX COOLING	WEIGHT (KG)	DESIGN DUTY
AHU1	CLP	SUPPLY & EXTRACT	VIA BMS CONTROL PANEL	2047	3350W / 5.2A / 400V 3Ph / 50Hz	3350W / 5.2A / 400V 3Ph / 50Hz	16.13kW AIR ON -5°C / OFF 5°C	23.08kW AIR ON 5°C / OFF 20°C	ALUMINUM HRE 73.5%	26.1kW - AIR ON 29°C / OFF 18°C - 2 STAGE COIL	1900	1346 l/s @ 230Pa
REFER TO CLP AIR HANDLING DRAWING 2909-1 FOR UNIT TECHNICAL SPECIFICATION FOR FURTHER INFORMATION												

ATTENUATOR SCHEDULE							
REF	MANUFACTURER	TYPE	MODEL	PRESSURE DROP	INTERNAL NOISE CRITERIA	SIZE (mm)	WEIGHT (kg)
ATT1	CAICE	FAI	SG CASED	9	NR 35	1300 X 950 X 600	87
ATT2	CAICE	SUPPLY	SG CASED	6	NR 35	1300 X 700 X 1200	107
ATT3	CAICE	EXTRACT	EG ELEMENT	10	NR 35	1300 X 950 X 1200	115
ATT4	CAICE	EXHAUST	SG CASED	11	NR 35	1300 X 950 X 900	127

FIRE SMOKE DAMPER SCHEDULE						
REF	MANUFACTURER	TYPE	MODEL	OPERATION	CONTROL	FIXING METHOD
FSD1	ACTIONAIR	ES RATED SMOKESHIELD PTC	S501	MODE 6 240V (OPEN / FAIL SAFE CLOSE)	BMS MCP	DWFX C
FSD2	ACTIONAIR	ES RATED SMOKESHIELD PTC	S501	MODE 6 240V (OPEN / FAIL SAFE CLOSE)	BMS MCP	DWFX C

AIR CONDITIONING CONDENSERS									
REF	MODEL	INTERFACE	LOCAL CONTROLLER	CONTROLS	SIZE (mm)	NOMINAL DUTY (kW)	WEIGHT	ELECTRICAL	REFRIGERANT
CU1	PUZ-ZM35VKA	N/A	WALL CONTROLLER IN CLEAN UTILITY	N/A	630h x 809w x 300d	HTG:3.50 CLG:3.30	46KG	STARTING CURRENT:5A, RUNNING CURRENT:13.4A [MAX] PHASE:1PH @ 230v (FUSE: 16A MRF)	R32
CU2	PUHZ-ZM200YKA	PAC-IF013B-E (INTERFACE)	PAR-40MAA LOCAL CONTROLLER (TO BE POSITIONED LOCALLY IN UNIT)	0-10v BMS CONTROL (2 STAGE MODULATION) & BMS FAULT SIGNAL	1050w x 370d x 1338h	CLG:19.0	137KG	STARTING CURRENT:5A, RUNNING CURRENT:22.5A [MAX] PHASE:3PH @ 415v (FUSE: 32A MRF)	R32
CU3	PUHZ-ZM200YKA	PAC-SIF013B-E (SUB-INTERFACE)			1050w x 370d x 1338h	CLG:19.0	137KG	STARTING CURRENT:5A, RUNNING CURRENT:22.5A [MAX] PHASE:3PH @ 415v (FUSE: 32A MRF)	R32



ADDITIONAL NOTES

- ALL DUCTWORK TO BE MANUFACTURED & INSTALLED IN ACCORDANCE WITH DW144 TO CLASSIFICATION 'A' BE ADEQUATELY SUPPORTED THROUGH ITS LENGTH FULLY SEALED FOR AIR TIGHTNESS.
- INTERNAL SUPPLY DUCTWORK TO BE THERMALLY INSULATED IN FOIL FACED 40mm MINERAL WOOL DUCTWRAP
- EXTERNAL SUPPLY & EXTRACT DUCTWORK TO BE THERMALLY INSULATED IN KINGSPAN THERMADUCT 40mm BOARDS, 6mm PLY PROCLAD SIDES & BOTTOM, 13mm PLY PROCLAD TOP. COLOUR FINISH IS GREY RAL 7031.
- FRESH AIR INTAKE & EXHAUST DUCTWORK TO BE UN-INSULATED, FINISH TO BE MILD STEEL HOT DIPPED GALVANISED COATED (SELF COLOUR)
- ACCESS DOORS SHALL BE PROVIDED IN ACCORDANCE WITH TR19 & DW145 CO-ORDINATED WITH OTHER SERVICES TO GIVE ADEQUATE ACCESS.
- FIRE DAMPERS TO BE INSTALLED IN ACCORDANCE WITH DW145 AND WILL REQUIRE PRE FORMED APERTURES AND FRAMING WITHIN EACH BARRIER FOR SUPPORT AND MOUNTING. ALL CARRIED OUT BY THE MAIN CONTRACTOR.
- ALL BUILDERS, CIVIL & ASSOCIATED MAKING GOOD TO BE THE RESPONSIBILITY OF THE MAIN CONTRACTOR.
- ALL ELECTRICAL SITE WIRING TO BE THE RESPONSIBILITY OF THE NOMINATED ELECTRICAL CONTRACTOR.
- AHU BASE TO BE LEVEL, TRUE AND BE SUITABLE TO SUPPORT A STATIC LOAD OF APPROXIMATELY 2780 KG.
- SUPPLY AIR ATTENUATOR ATT2 TO BE PROVIDED WITH MELENIX WRAPPED INFILL PANELS.
- AHU TO BE TREATED FOR COASTAL PROTECTION. THIS SHALL INCLUDE THE FOLLOWING:
 - PLASTISOL COATING TO THE INTERNAL PANELS OF THE AHU
 - TREATED / PAINTED FAN SETS
 - STAINLESS STEEL FILTER FRAMES
 - COATED HEAT RECOVERY SECTION
 - BLYGOLD TREATED FROST COIL, REHEAT COIL AND DX COOLING COIL
- SYSTEM DESIGN IN ACCORDANCE WITH HTM-03-01.

AHU DESIGNED IN ACCORDANCE WITH ENVIRONMENTAL MATRIX, DOCUMENT REF: M5073-DSSR-01-XX-SH-J-90_90-0001 P0

C02	22/02/21	AHU AIR DUTY INCREASED	GO	SS
C01	17/02/21	APPROVED FOR CONSTRUCTION, CONDENSERS RELOCATED, ROOM CONDITIONS ADDED TO ATTENUATOR SCHEDULE	GAT	MJT
P03	28/01/21	CONDENSERS RELOCATED	GAT	MJT
P02	15/01/21	AHU CASING REVISED FOLLOWING GRAHAM'S COMMENTS	GAT	MJT
P01	15/12/20	PRELIMINARY ISSUE	GAT	MJT
REV:	DATE:	DESCRIPTION	BY:	CHK:

SAYES & CO LTD

QUALITY ASSURED DESIGN & INSTALLATION
BUILDING SERVICES ENGINEERS
ESTABLISHED 1931

Richardshaw Road,
Stanningley,
Pudsey,
Leeds LS28 6BR

Tel : (0113) 257 8411
Email : contact@sayesltd.com
Web : www.sayesltd.com



MAIN CONTRACTOR:

Premier
MODULAR EXCELLENCE

BRANDSBUROTON, DRIFFIELD, EAST YORKSHIRE YO25 8LJ
TELEPHONE: (01984) 546000

PROJECT:

WEST CUMBERLAND HOSPITAL -
PHASE 2 DEVELOPMENT

DRAWING TITLE:

AHU & EXTERNAL COMPOUND

DRAWING STATUS:

CONSTRUCTION

REV:

C02

DATE:

15/12/20

SIZE/SCALE:

A1 @ 1:50

SAYES CONTRACT NO:

7220

DRAWN BY:

MJT

CHECKED BY:

DDC

PROJECT	ORIGINATOR	ZONE	LEVEL	TYPE	ROLE	NUMBER
---------	------------	------	-------	------	------	--------

31815	SCL	XX	XX	DR	M	0501
-------	-----	----	----	----	---	------