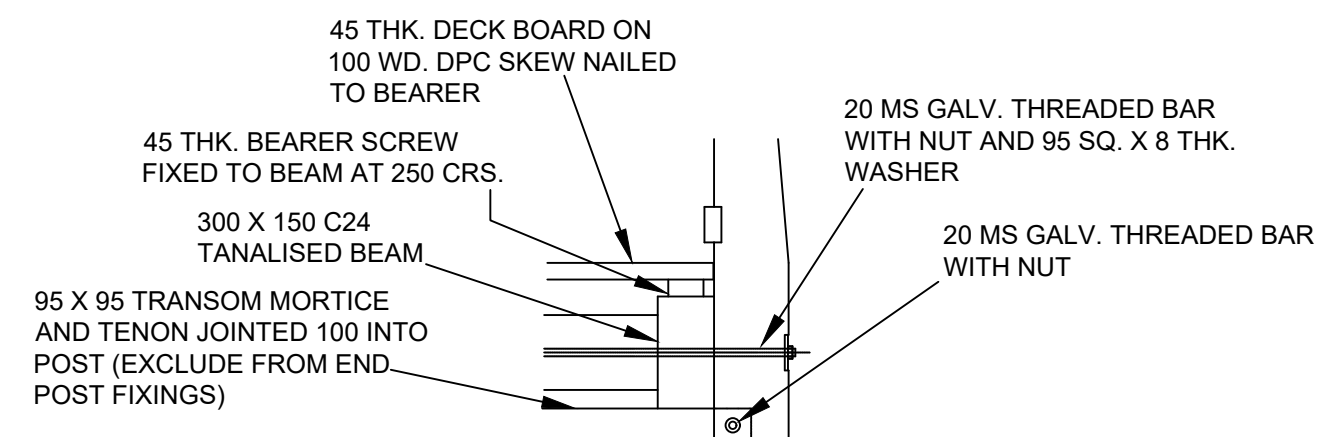
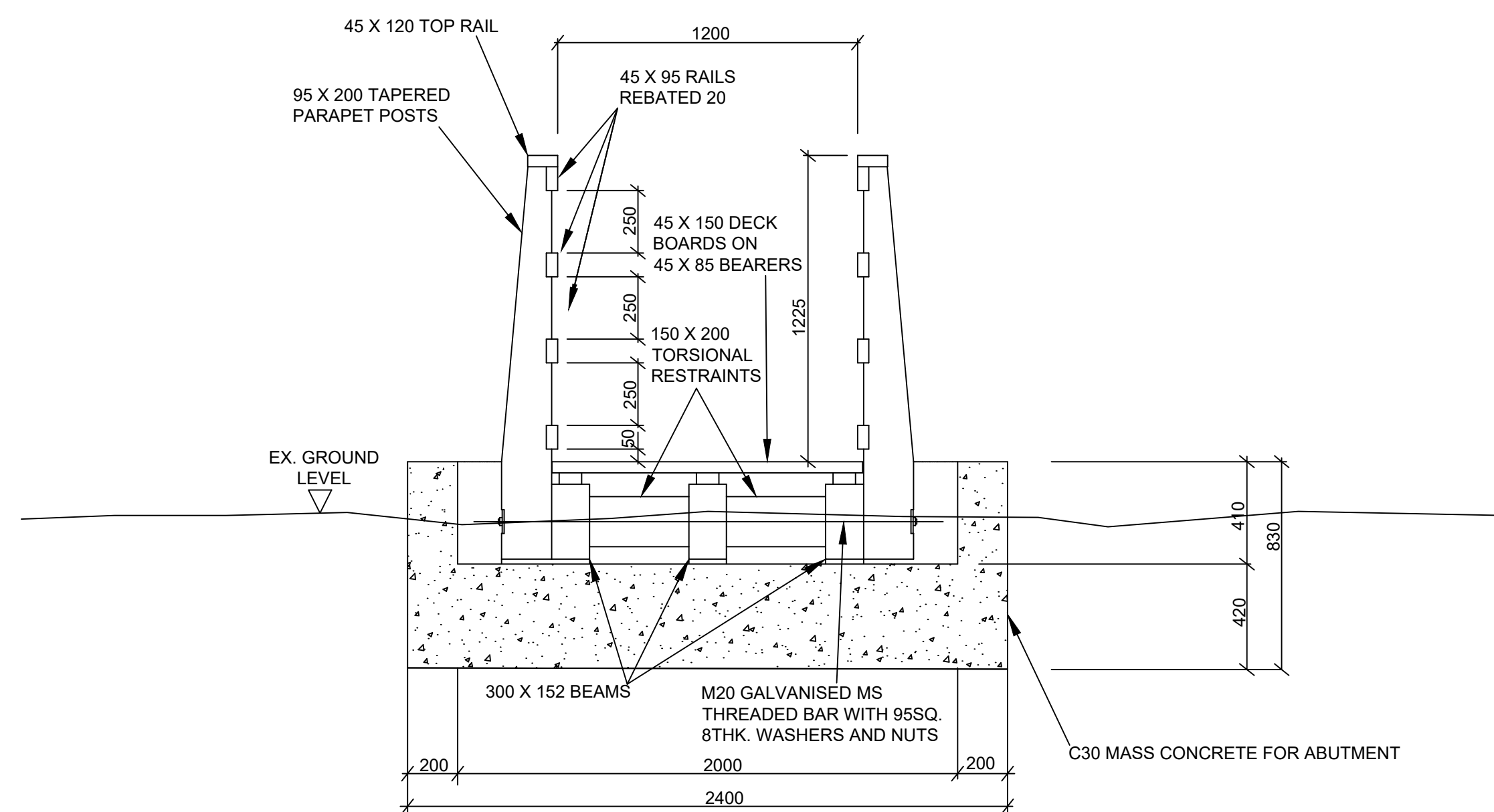


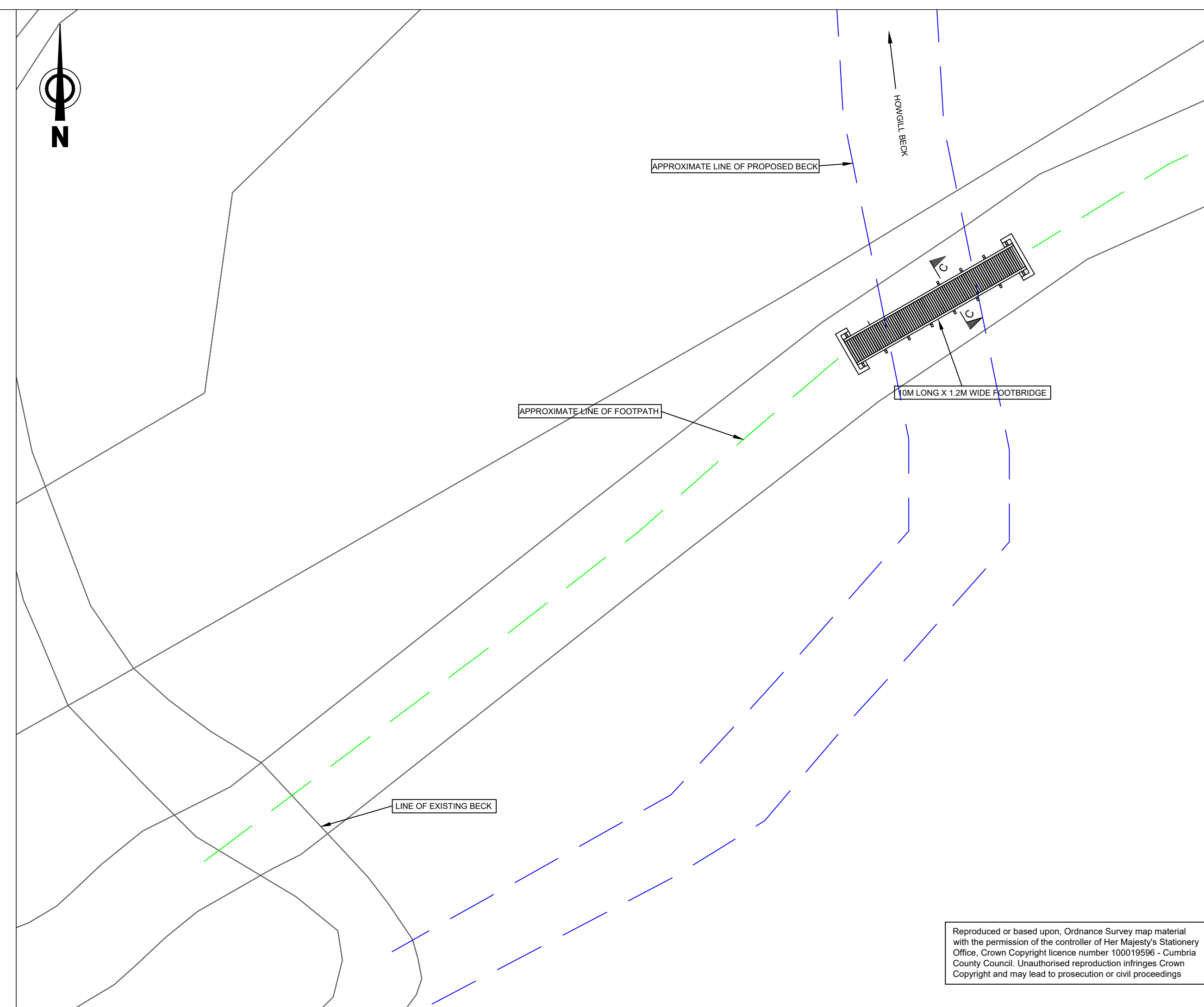
DOWNSTREAM ELEVATION ON 10M LONG X 1.2M WIDE FOOTBRIDGE / SCALE 1:25



POST ELEVATION



VIEW/SECTION ON/TROUGH C - C



HEALTH & SAFETY NOTES:
1) EXCAVATION WORKS SHOULD BE CARRIED OUT CAREFULLY BY HAND.
2) A C.A.T. (CABLE AVOIDANCE TOOL) SURVEY SHOULD BE CARRIED OUT TO LOCATE ANY POSSIBLE SERVICES. HAND DIG TRIAL HOLES TO LOCATE SERVICES AS NECESSARY.
3) ENSURE THAT INDIVIDUALS LIFT WITHIN THEIR OWN CAPABILITIES & EMPLOY APPROPRIATE HANDLING TECHNIQUES TO DO THIS.



PROJECT:
WILDER WALKMILL FOOTBRIDGE

TITLE:
GENERAL ARRANGEMENT

SCALE & SIZE: PRINT @ A1	CHECKED:	APPROVED:
CAD FILE:	DRAWN: L BRYANT	DATE: 2022
START CHAINAGE	DRAWING No:	REV: 0

Reproduced or based upon, Ordnance Survey map material with the permission of the controller of Her Majesty's Stationery Office. Crown Copyright license number 100019596 - Cumbria County Council. Unauthorised reproduction infringes Crown Copyright and may lead to prosecution or civil proceedings