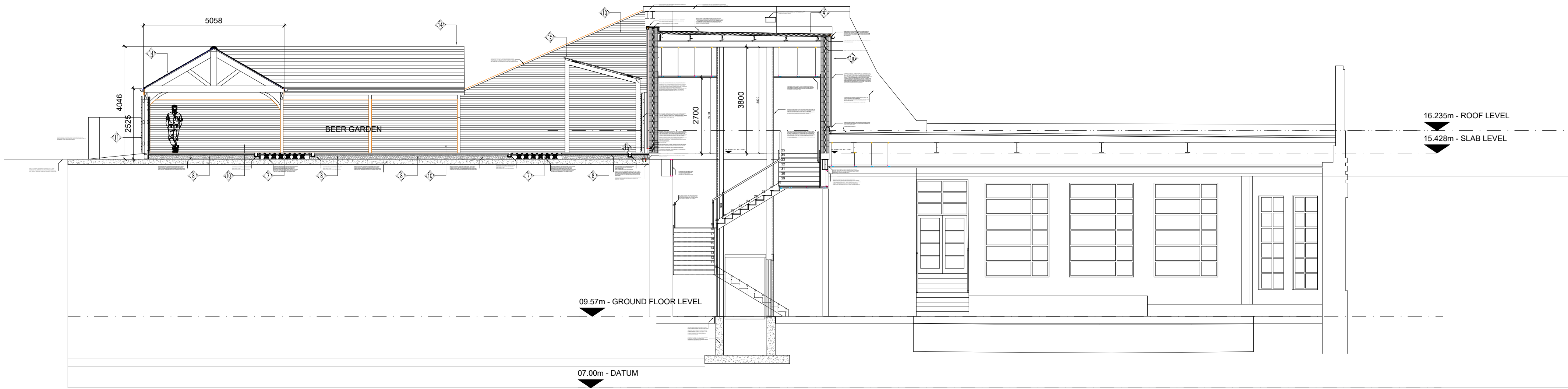


Do not scale from this drawing. All dimensions to be checked on site prior to manufacture and construction. This drawing is the property of Harrison Ince Holdings Limited and should not be reproduced without permission.
All discrepancies to be brought to the attention of the architect immediately.
This drawing is to be read in conjunction with the specification / bill of quantities and related drawings.

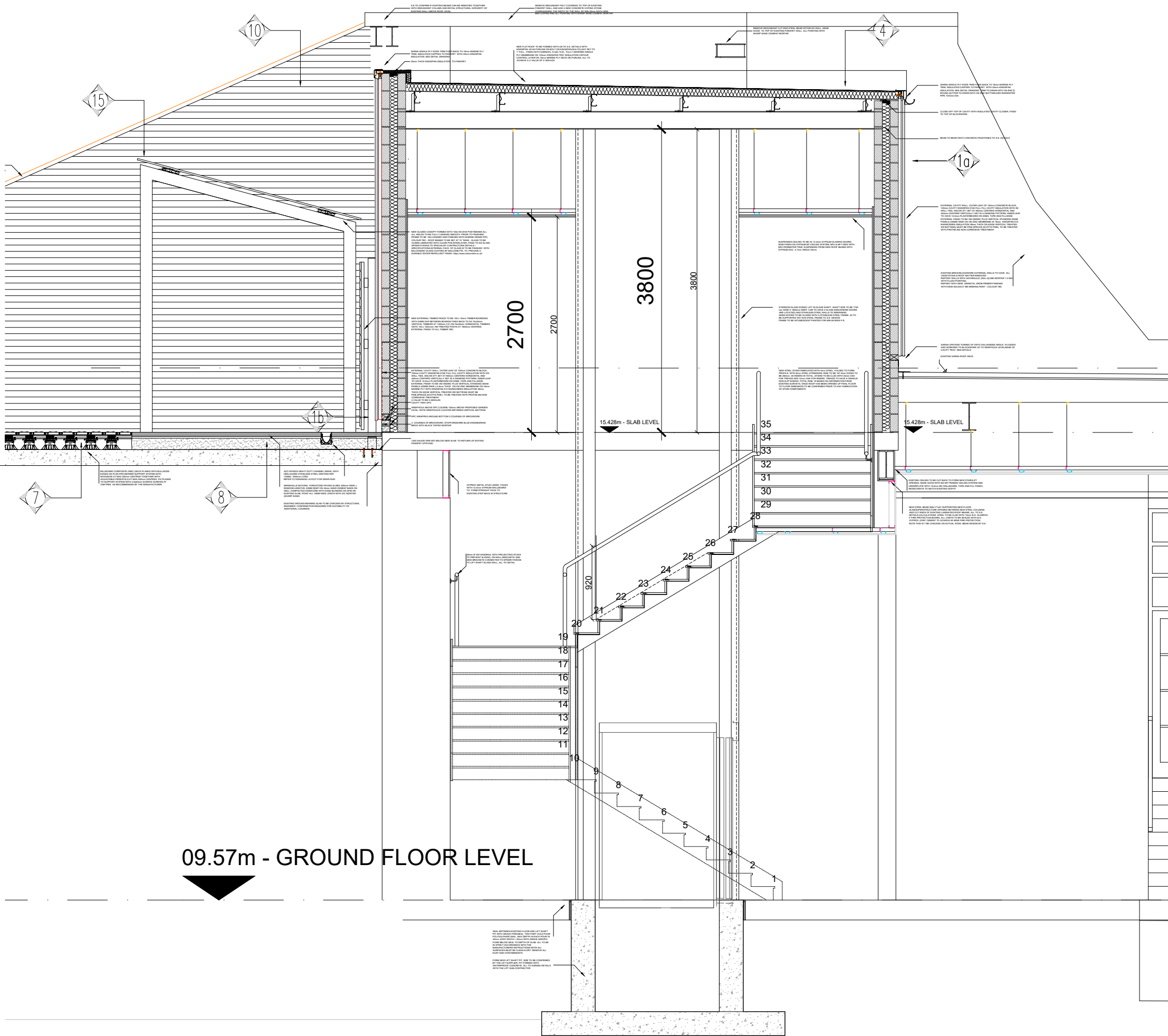
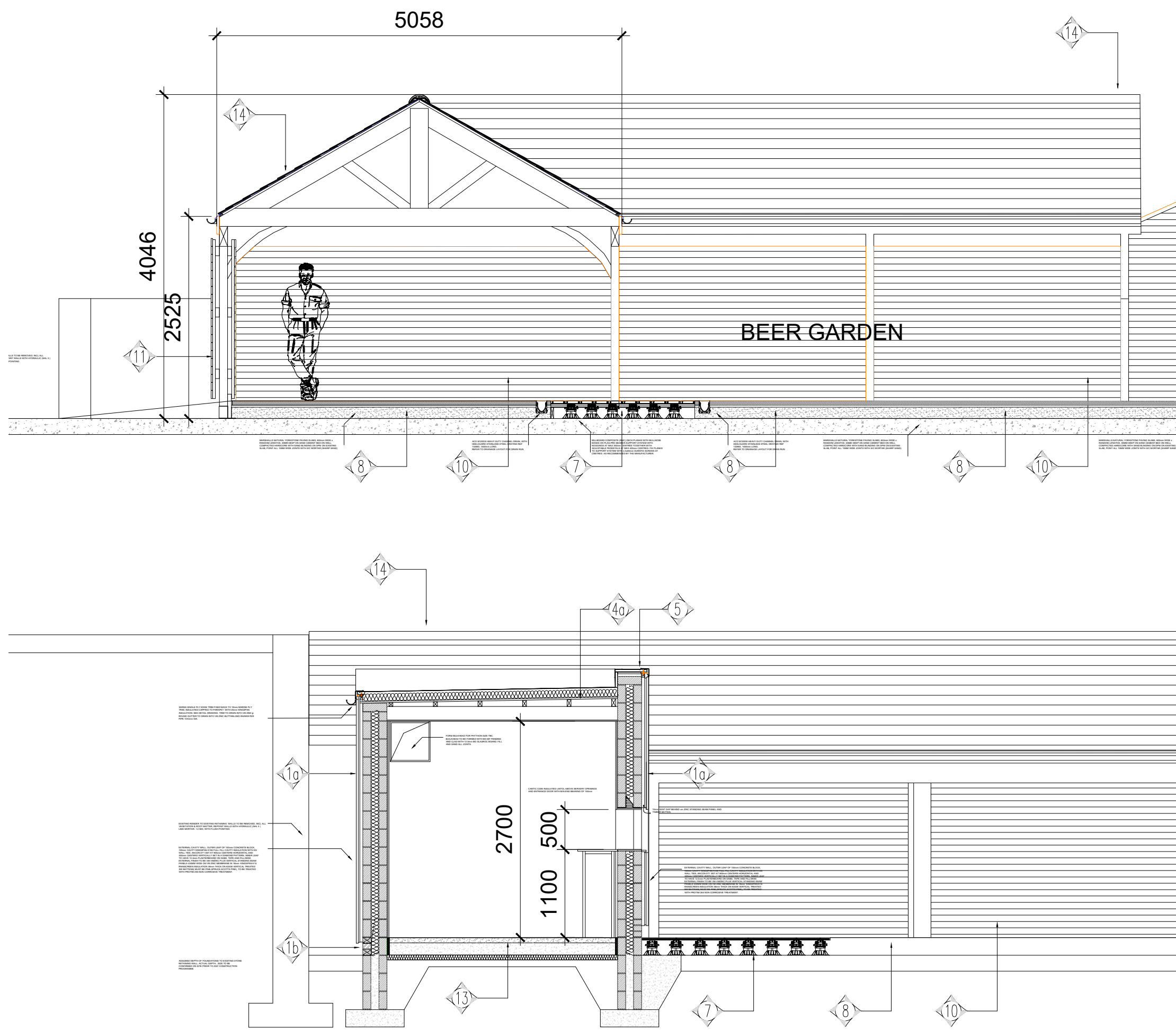
REVISIONS

-	FIRST ISSUE	04.07.2021	OC
A	AMENDMENTS FOLLOWING ZOOM CALL	01.06.2022	OC



PROPOSED SECTION A-A

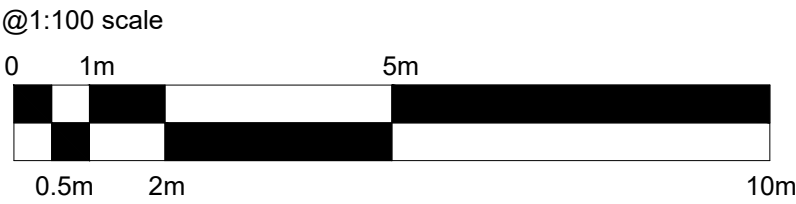
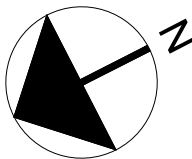
Scale 1:100



MATERIALS SPECIFICATION KEY:

ITEM NO.	DESCRIPTION & SPECIFICATION
10	RAINSCREEN CLADDING VM ZINC - VMZINC PLUS VERTICAL STANDING SEAM PANELS 430mm WIDE ON VM ZINC MEMBRANE ON 18MM MARINE GRADE PLY ON VERTICAL 63x30mm TIMBER STUDS. KINGSPIAN K115 RAINSCREEN INSULATION, 30mm THICK ALL TO SPECIALIST SUB-CONTRACTORS DETAILS TO INCLUDE FOR WIND LOADING, 100mm CONCRETE BLOCK, 100mm CAVITY INFILLED WITH KINGSPIAN K106 FULL FILL CAVITY INSULATION BOARD, 100mm LIGHTWEIGHT CONCRETE BLOCK INNER LEAF, 12.5mm PLASTERBOARD ON DAGS, TAPE & PLATE WITH ALBRO WATERPROOF WHITE EU GRADE HYDROGIC WALL SHEETBOARD U VALUE TO BE 0.25W/m2K
1b	102.5 mm FACING BRICK, STAFFORDSHIRE BLUE ENGINEERING BRICK, 3 COURSES HIGH WITH BLACK MORTAR FLUSH POINTING, 100mm CAVITY INFILLED WITH KINGSPIAN K106 FULL FILL CAVITY INSULATION BOARD, 100mm LIGHTWEIGHT CONCRETE BLOCK INNER LEAF, 12.5mm PLASTERBOARD ON DAGS
20	GLAZED WINDOWS TECHNICAL FIXES THERMALLY INSULATED WINDOW FRAME SYSTEM MARINE GRADE PPC - RAL 7024 (MATT) FINISH. U VALUE 2.2W/m2K. GLAZING TO HAVE THERMAL TRANSMISSION OF 0- <0.5. GLAZING TO BE SAFETY GLASS WHERE REQUIRED TO MEET B.R. PART N. GLASS IS TO BE LOW IRON FOR NEUTRAL COLOUR
3	ENTRANCE SCREEN & DOORS GROUND FLOOR ENTRANCE SCREENS AND DOORS TO MATCH TECHNICAL FIXES MARINE GRADE PPC - RAL 7024 (MATT). GLAZING TO BE SAFETY GLASS WITH A U VALUE OF 2.2W/m2K
4	ROOFING SARNA PVC SINGLE PLY MEMBRANE FULLY ADHERED SYSTEM ON 120mm KINGSPIAN THERMAFOOT TR27 ON VAPOUR CHECK ON PROFILED METAL DECK. ALL DETAILS TO BE IN STRICT ACCORDANCE WITH MANUFACTURERS DETAILS/AGREEMENT. ALL UPSTANDS TO BE FULLY ADHERED. COLOUR OF MEMBRANE TO BE RAL 7046 WD-GREY - U VALUE TO BE 0.25W/m2K
40	ROOFING SARNA PVC SINGLE PLY MEMBRANE FULLY ADHERED SYSTEM ON 120mm KINGSPIAN THERMAFOOT TR27 ON VAPOUR CHECK ON 18mm MARINE PLY DECK ON FIRING BLOCKS LAD TO 1" FALL ALL DETAILS TO BE IN STRICT ACCORDANCE WITH MANUFACTURERS DETAILS/AGREEMENT. U VALUE TO BE 0.25W/m2K
5	PARAPETS UPSTAND WALL SARNA PVC SINGLE PLY MEMBRANE FULLY ADHERED - COLOUR TO BE DARK GREY WITH PRE FORMED EDGE PROFILE WELDED ONTO MEMBRANE. FROM UPSTAND AS INDICATED ON ROOF DETAILS INSULATION TO PREVENT COLD BRIDGING KINGSPIAN KOOLTHERM K8 60MM THICK.
6	CEILINGS SUSPENDED SOFFIT OF 2x12.5mm GYPROC GLASROC BOARD SKIN FINISH ON MF FRAMING SYSTEM TO STAIRS & DISPENSE/SERVICE AREAS.
7	EXTERNAL DECKING MILBOBOARD COMPOSITE (MBC) DECK PLANK, COLOUR GOLDEN OAK - PRODUCT CODE

8	EXTERNAL PAVING MARSHALL 10KSTONE SCULPTURED PAVING WITH CAPITAL FINISH RANDOM SIZES, 50mm THICK ON 20mm SAND CEMENT DABS ON COMPACTED HARDCORE WITH 50mm SAND BLINDING. POINTING TO PAVING TO BE 10mm WIDE AND USE SHARP SAND.
9	WALL CLADDING RECLIMED PALLET WOOD, BUT JOINTED AND FIXED TO 50x35mm VERTICAL BATTENS, CENTRES TO SUIT PALLET WOOD. FINISH TBC.
10	TIMBER PANELING 100x19mm BOARDED FENCE WITH 20mm WIDE GAPS BETWEEN BOARDS, BOARDS LAD HORIZONTAL AND FIXED BACK TO EX 75x50 VERTICAL TIMBERS ONTO EX 75x50 HORIZONTAL TIMBERS WITH 100x100 HW TREATED POSTS AT 1.8M C/C.
11	TIMBER ACOUSTIC FENCE 100x19mm BOARDED FENCE MIN MASS 10KG/M2, BOARDS LAD HORIZONTAL AND FIXED BACK TO EX 75x50 VERTICAL TIMBERS ONTO EX 75x50 HORIZONTAL TIMBERS WITH 100x100 HW TREATED POSTS AT 1.8M C/C. NOTE BOARDS TO BE FREE FROM KNOTS AND HOLES
12	SUSPENDED CONCRETE FLOOR ENGINEERED FLOOR BOARDING ON ADHESIVE BED ON 200MM CONCRETE RC SLAB ONTO STEEL FRAME TO SE DETAILS. ALLOW FOR A RECESSED MATWELL TO ROOF ACCESS DOORS. MIN 1.4M LENGTH X FULL WIDTH OF DOORS
13	GROUND BEARING CONCRETE FLOOR ALTO RELIANCE 25 2.5mm THICK FLOORING WITH COVERED SKIRTING ON TRENCO 15000 FAST CURING LIQUID DPM ON 45mm SAND CEMENT SCREENED ON 150mm CONCRETE SLAB TO S.E. DETAILS ON 40mm KINGSPIAN K103 INSULATION ON 1200G W/QUEEN DPM WITH ALL JOINTS TAPED AND SEALED ON 150mm HARDCORE WITH SAND BLINDING. NOTE 25mm KINGSPIAN K103 PERIMETER INSULATION TO ALL EXTERNAL EDGES OF SLAB. U VALUE TO BE 0.25W/m2K
14	COVERED GAZEBO GREEN OAK FRAME GAZEBO TO SPECIALIST FABRICATORS DETAILS AND DIMENSIONS NOTED ON THIS DRAWING. ROOF TO BE FINISHED WITH SAGA 35 NATURAL SLATE 400x250mm ON KINGSPIAN NULVENT SARKING MEMBRANE ON 150x25mm SQUARE EDGE TREATED SW SARKING BOARDS WITH 2-3mm GAP BETWEEN BOARDS FIXED ON TOP OF OAK FRAME. PITCH OF ROOF 30° HEADUP OF SLATES TO BE 90mm. ALL TO COMPLY WITH BS5534:2014 & BS8000-PART 6 & NRPG TECHNICAL BULLETIN 45.



HARRISON INCE

ARCHITECTS INTERIOR DESIGNERS

CLIENT JD WETHERSPOON PLC

PROJECT THE BRANSTY ARCH
BRANTY ROW, WHITEHAVEN, CA28 7XE

TITLE PROPOSED SECTIONS

DATE	SEP 2022	SCALE	1:100 @ A1
JOB NO.	PN4243-05	DWG. NO.	AX01 -
DRAWN	CAD/SJK	CHECKED	

24 LITTLE PETER STREET
KNOTT MILL
MANCHESTER
M15 4PS
TEL: 0161 236 3650
EMAIL: enquiries@harrison-ince.co.uk