

PLOT D INVESTIGATION PLATES

General



Plate 1 – View from WS712D towards the north



Plate 2 – View over Plot D towards the Irish Sea (view north – northeast).



Plate 3 – View from TP702D over Plot D with area of former Croft Ladysmith Pit and Coke Works towards southeast with S4 Building in the background.



Plate 4 – View northeast over Plot D with former MNO, MOS, MO and UFEX Plants in the foreground and over former Alabaster Works Area to S4 Building in the background.

Trial pitting



Plate 5 – TP716D – located in area of former storage tanks of MMO, MOS, MO and UFEX Plants, next to former Fatty Alcohol and Ethoxylation Plant. Top of trial pit is covered by hardcore gravel, followed by blue cement clinker overlaying gravely sand.

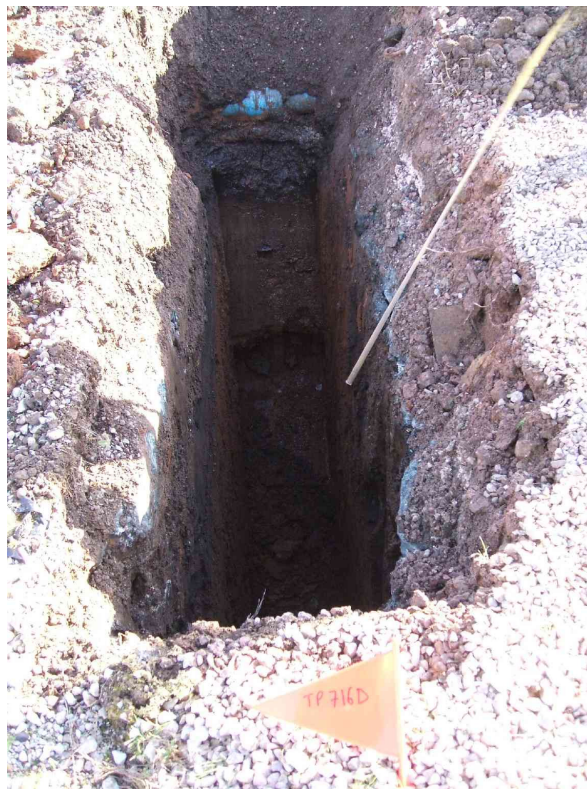


Plate 6 – TP716D (see plate 5). Red-brown clay was encountered at 0.7m bgl below a blue pipe running in north-south direction.



Plate 7 – located in several locations of Plot A and D. Blue-white cement clinker.