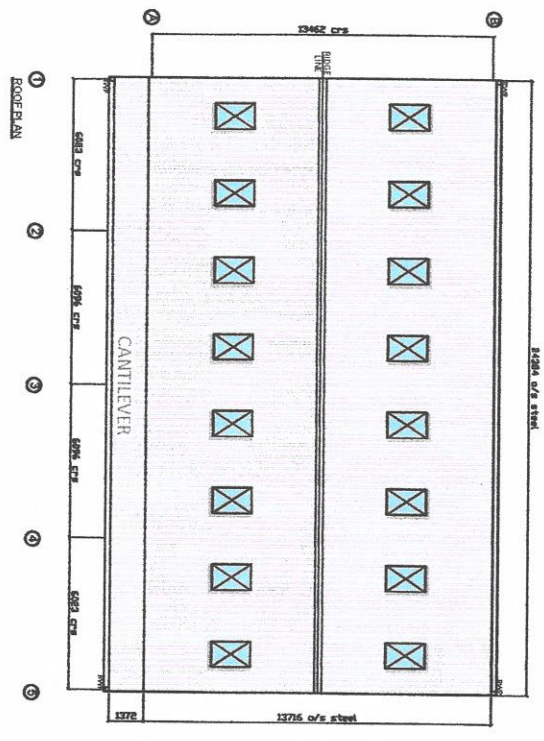
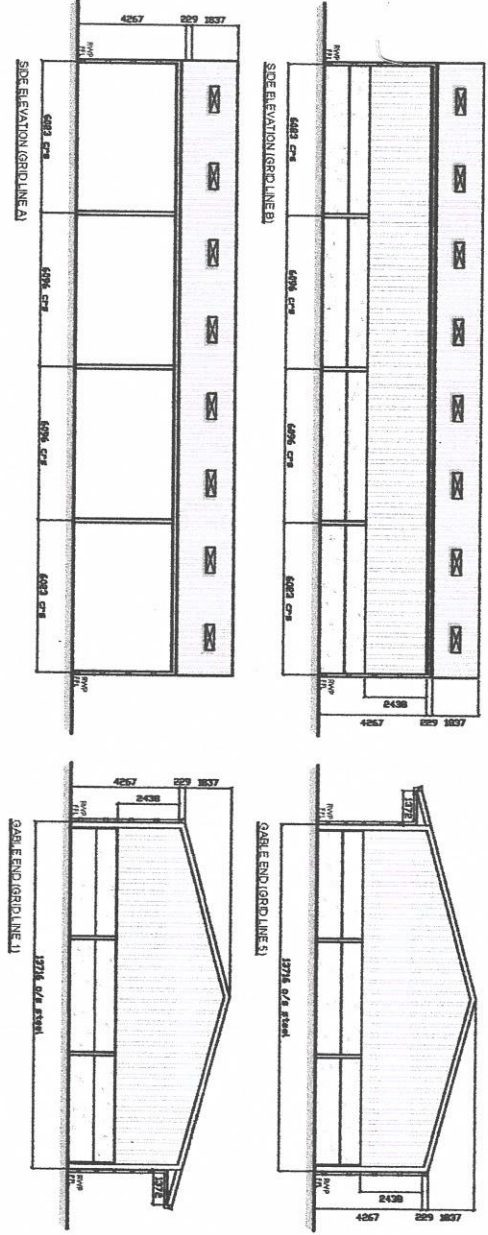


PROJECT PAUSED UNTIL WRITTEN CONFIRMATION IS RETURNED BY CUSTOMER



SPECIFICATION:
SIZE: 24360mm (80') LONG x 13716mm (45') WIDE x 4.257m (14') HIGH TO EAVES WITH 1.5' ROOF PITCH
STRUCTURE: 22mm (7/8") CONCRETE TO ONE SIDE
STANCHIONS: 254mm x 146mm x 13kg UB STANCHIONS
SUB STANCHIONS: 203mm x 133mm x 10kg UB INTERMEDIATE SUB STANCHIONS
PARTS: 203mm x 133mm x 25kg UB MATTERS WITH WALTER STAYS
CLADDING: 13mm (1/2") OSB MATTER AND SIDE BRACING TO ONE END BAY COMPLETE WITH OSB EAVES TIE.
STEELWORK: ALL FABRICATED STEELWORK DELIVERED TO SITE SMALL, INCORPORATE APPROXIMATE 10% WASTE TO ALLOW FOR CUTTING AND WELDING TO THE REQUIREMENTS OF BS EN 1090-1.
CEILING: 225 x 75 C16 GRADED TYPICALISED TIMBER PULNITS TO FRAME AT 1.37M CENTRES. EAVES BEAM TO BE 225 x 75 C16 GRADED TYPICALISED TIMBER.
ROOF CLADDING: 13mm (1/2") OSB MATTER AND SIDE BRACING TO ONE END BAY COMPLETE WITH OSB EAVES TIE.
ROOF TRUSSING: 13mm (1/2") OSB MATTER AND SIDE BRACING TO ONE END BAY COMPLETE WITH OSB EAVES TIE.
ROOF LIGHTS: 14 NO. 1.525M CORRUGATED 2.4KG/M² GFR PROFILE 8 ROOF LIGHTS IN ROOF BAY COMPLETE WITH 13mm (1/2") OSB MATTER AND SIDE BRACING TO ONE END BAY COMPLETE WITH OSB EAVES TIE.
RAINWATER GOODS: 13mm (1/2") OSB MATTER AND SIDE BRACING TO ONE END BAY COMPLETE WITH OSB EAVES TIE.
FASTENINGS: FASTENINGS TO BE AS PER MANUFACTURER'S REQUIREMENTS.
PAINTS: ALL SURFACES TO BE PAINTED WITH 2 COATS OF P.V.C. DOWNPIPER TO EACH END CLADDING.
INSULATION: 100MM POLYSTYRENE INSULATION ON 125 x 75 C16 GRADED TYPICALISED TIMBER SHEETING NAILS.
ROOF FINISH: 13mm (1/2") OSB MATTER AND SIDE BRACING TO ONE END BAY COMPLETE WITH OSB EAVES TIE.
CONCRETE PANELS: 90mm THICK x 2000mm HIGH CONCRETE PANELS TO BOTH ENDS AND ONE SIDE.

MR JASWANTH TARN HOW SEASCALE CA20 1HP	CONTRACT MR D HILTON SEASCALE	QUANT MR D HILTON TARN HOW SEASCALE CA20 1HP						
	TITLE ELEVATION DRAWING	DRAWN BY A GOVAN						
REVISIONS: <table border="1"> <tr> <th>REV.</th> <th>DATE</th> <th>DESCRIPTION</th> </tr> <tr> <td>1</td> <td>20-06-23</td> <td>AS ISSUED</td> </tr> </table>			REV.	DATE	DESCRIPTION	1	20-06-23	AS ISSUED
REV.	DATE	DESCRIPTION						
1	20-06-23	AS ISSUED						
DRAWING NO. RS23-1473B-7056-02								

CONVERSION: TECHNICAL SERVICES LTD, The Valley, Gwent, SA4 9AA