

Mr Alisdare M Bruce

F.S.H. (Scott) Ltd, F.L.H.H. (F.D. Co)

**The Town and Country Planning General Permitted Development)
(England) (Amendment) Order 2018**

**Planning
Nature Conservation & Ecology
Assessment**

**Holme Croft, Braystones, Beckermest,
Cumbria, CA21 2YL
(CPH No.08/013/0024)**

PROPOSAL: New Livestock Building

APPLICANT: Mr AT Sharp

September 2021

Contents

Proposal	2
Which are reasonably necessary for the purposes of agriculture within that unit....	2
Amount.....	2
Layout	2
Landscaping.....	2
Appearance.....	2
Assessment.....	3-5
Conclusion.....	5
Annex I – MAGIC Plan.....	6
Annex II- SSSI IRZ Report.....	7-8
Annex III – Nearest Feature Found.....	9-10

Proposal

Which are reasonably necessary for the purposes of agriculture within that unit.

The development is required to provide an area of livestock housing for the Agricultural Unit

Amount

The development consists of one structure with the dimensions listed below:

General Purpose Building

Length: 18.0 metres

Width: 12.0 metres

Height to Eaves: 3.6 metres

Height to Ridge: 4.8 metres(max)

Floor Area: 216.0 m²

Layout

The layout is as per the submitted block plan.

Landscaping

Minimal required due to the location, natural surrounding will help screen the building

Appearance

The materials proposed would match the existing development in the local area and as indicated on the Design & Access Statement.

ASSESSMENT

The following assessment considers the requirements of development in relation to determine whether any adverse effects using the MAGIC SSSI IRZs Dataset.

Site Check Report Report generated on Fri Sep 24 2021

You selected the location: Centroid Grid Ref: NY00570612

The following features have been found in your search area:

SSSI Impact Risk Zones - to assess planning applications for likely impacts on SSSIs/SACs/SPAs & Ramsar sites (England)

1. DOES PLANNING PROPOSAL FALL INTO ONE OR MORE OF THE CATEGORIES BELOW?

2. IF YES, CHECK THE CORRESPONDING DESCRIPTION(S) BELOW. LPA SHOULD CONSULT NATURAL ENGLAND ON LIKELY RISKS FROM THE FOLLOWING:

All Planning Applications

Infrastructure

Pipelines, pylons and overhead cables. Any transport proposal including road, rail and by water (excluding routine maintenance). Airports, helipads and other aviation proposals.

Wind & Solar Energy

Solar schemes with footprint > 0.5ha, all wind turbines.

Minerals, Oil & Gas

Planning applications for quarries, including: new proposals, Review of Minerals Permissions (ROMP), extensions, variations to conditions etc. Oil & gas exploration/extraction.

Rural Non Residential

Residential

Residential development of 100 units or more.

Rural Residential

Any residential development of 50 or more houses outside existing settlements/urban areas.

Air Pollution

Any industrial/agricultural development that could cause AIR POLLUTION (incl: industrial processes, livestock & poultry units with floorspace > 500m², slurry lagoons > 200m² & manure stores > 250t).

Combustion

General combustion processes >20MW energy input. Incl: energy from waste incineration, other incineration, landfill gas generation plant, pyrolysis/gasification, anaerobic digestion, sewage treatment works, other incineration/ combustion.

Waste

Landfill. Incl: inert landfill, non-hazardous landfill, hazardous landfill.

Composting

Any composting proposal with more than 500 tonnes maximum annual operational throughput. Incl: open windrow composting, in-vessel composting, anaerobic digestion, other waste management.

Discharges

Water Supply

Large infrastructure such as warehousing / industry where net additional gross internal floorspace is > 1,000m² or any development needing its own water supply .

Notes 1

Notes 2

GUIDANCE - How to use the Impact Risk Zones

[/Metadata for magic/SSSI IRZ User Guidance MAGIC.pdf](#)

Local Nature Reserves (England) - points

No Features found

Local Nature Reserves (England)

No Features found

Proposed Ramsar Sites (England) - points

No Features found

Proposed Ramsar Sites (England)

No Features found

Sites of Special Scientific Interest Units (England) - points

No Features found

Sites of Special Scientific Interest Units (England)

No Features found

Sites of Special Scientific Interest (England) - points

No Features found

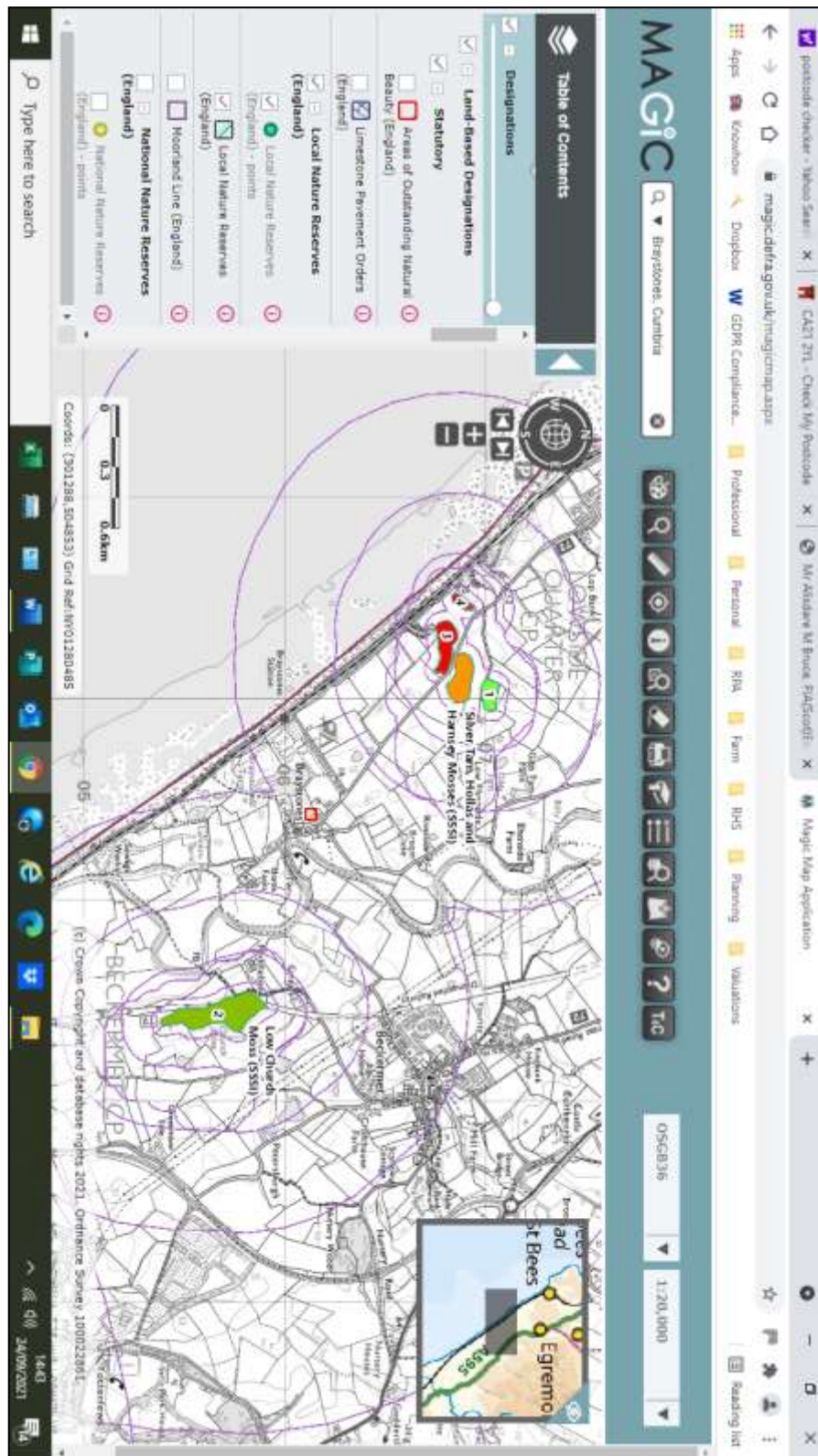
Sites of Special Scientific Interest (England)

No Features found

Special Areas of Conservation (England) - points
No Features found
Special Areas of Conservation (England)
No Features found
Possible Special Areas of Conservation (England) - points
No Features found
Possible Special Areas of Conservation (England)
No Features found
Special Protection Areas (England) - points
No Features found
Special Protection Areas (England)
No Features found
Biosphere Reserves (England) - points
No Features found
Biosphere Reserves (England)
No Features found
OK

CONCLUSION

In conclusion the proposed development will not have any effect on surrounding habitats & environments.



Site Check Report Report generated on Fri Sep 24 2021

You selected the location: Centroid Grid Ref: NY00570612

The following features have been found in your search area:

SSSI Impact Risk Zones - to assess planning applications for likely impacts on SSSIs/SACs/SPAs & Ramsar sites (England)

1. DOES PLANNING PROPOSAL FALL INTO ONE OR MORE OF THE CATEGORIES BELOW?

2. IF YES, CHECK THE CORRESPONDING DESCRIPTION(S) BELOW. LPA SHOULD CONSULT NATURAL ENGLAND ON LIKELY RISKS FROM THE FOLLOWING:

All Planning Applications

Infrastructure

Pipelines, pylons and overhead cables. Any transport proposal including road, rail and by water (excluding routine maintenance). Airports, helipads and other aviation proposals.

Wind & Solar Energy

Solar schemes with footprint > 0.5ha, all wind turbines.

Minerals, Oil & Gas

Planning applications for quarries, including: new proposals, Review of Minerals Permissions (ROMP), extensions, variations to conditions etc. Oil & gas exploration/extraction.

Rural Non Residential

Residential

Residential development of 100 units or more.

Rural Residential

Any residential development of 50 or more houses outside existing settlements/urban areas.

Air Pollution

Any industrial/agricultural development that could cause AIR POLLUTION (incl: industrial processes, livestock & poultry units with floorspace > 500m², slurry lagoons > 200m² & manure stores > 250t).

Combustion

General combustion processes >20MW energy input. Incl: energy from waste incineration, other incineration, landfill gas generation plant, pyrolysis/gasification, anaerobic digestion, sewage treatment works, other incineration/ combustion.

Waste

Landfill. Incl: inert landfill, non-hazardous landfill, hazardous landfill.

Composting

Any composting proposal with more than 500 tonnes maximum annual operational throughput. Incl: open windrow composting, in-vessel composting, anaerobic digestion, other waste management.

Discharges

Water Supply

Large infrastructure such as warehousing / industry where net additional gross internal floorspace is > 1,000m² or any development needing its own water supply .

Notes 1

Notes 2

GUIDANCE - How to use the Impact Risk Zones

[/Metadata_for_magic/SSSI IRZ User Guidance MAGIC.pdf](#)

Local Nature Reserves (England) - points

No Features found

Local Nature Reserves (England)

No Features found

Proposed Ramsar Sites (England) - points

No Features found

Proposed Ramsar Sites (England)

No Features found

Sites of Special Scientific Interest Units (England) - points

No Features found

Sites of Special Scientific Interest Units (England)

No Features found

Sites of Special Scientific Interest (England) - points

No Features found

Sites of Special Scientific Interest (England)

No Features found

Special Areas of Conservation (England) - points

No Features found

Special Areas of Conservation (England)
No Features found
Possible Special Areas of Conservation (England) - points
No Features found
Possible Special Areas of Conservation (England)
No Features found
Special Protection Areas (England) - points
No Features found
Special Protection Areas (England)
No Features found
Biosphere Reserves (England) - points
No Features found
Biosphere Reserves (England)
No Features found
OK