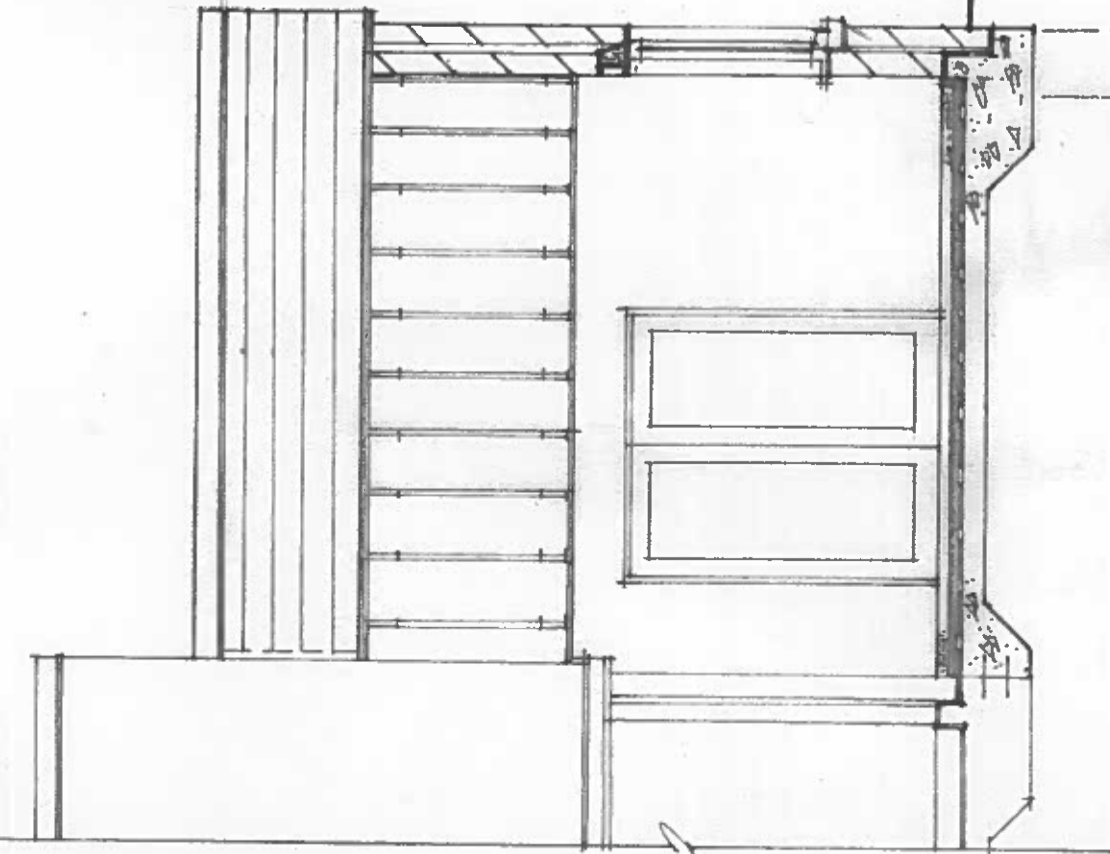


17 MONTREAL PLACE, MOOR ROW EXTENSION for D. BARNETT

2013



SECTION aa 1:50

STRUCTURAL RAFT & ASSOCIATED DRAIN PROTECTION WORKS, TO BE TO ENGINEERS CALCS & DETAILS, IN AGREEMENT WITH UNITED UTILITIES REQUIREMENTS.

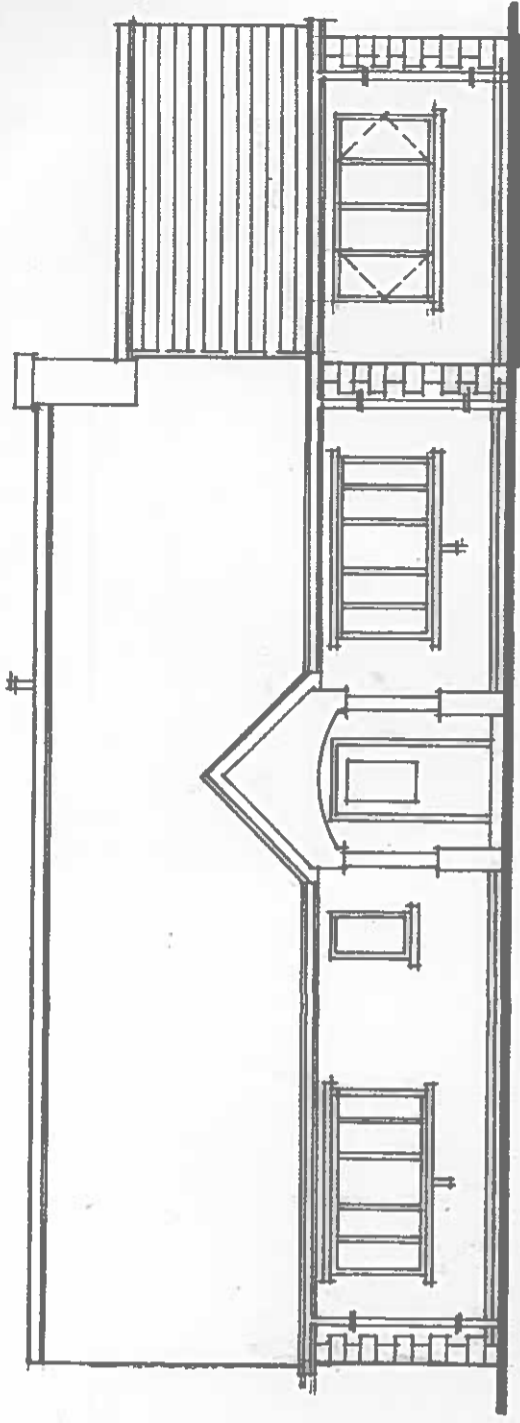
WINDOWS/DOORS - UPVC TO MATCH EXIST., WITH SEALED LOW 'E' COATED PG UNITS (16 MM. AIR GAP) WITH MIN. 2000 MM² TRICKLE VENTS, WITH OPENINGS > 1/20TH FLOOR AREA, WITH DRAUGHT SEALING STRIPS & BEADED & SEALED WITH MASTIK. ALL GLAZING TO BS 6206:1981

INTERNAL COMPATIBLE SMOKE DETECTOR TO U.A. AGREED POSITION IN SUNROOM - TYPE - CC FIRE SERVICE APPROVED.

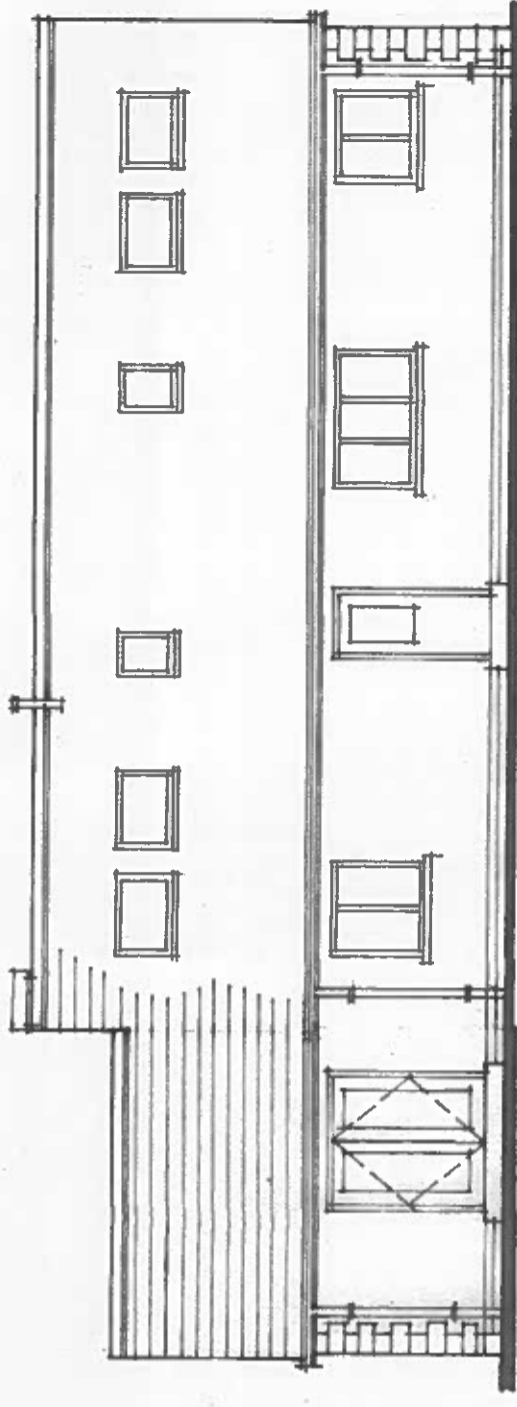
ROOF - INTERLOCKING GREY CONG. TILES TO MATCH EXISTING ON 50 X 25 MM. TREATED SW BATTENS ON TYNEK ON PRE-FORMED TRUSSES @ 400 MM C/S, WITH ALL MANUF/RS DETAILS/CALCS ETC TO LA FOR APPROVAL, WITH 30 X 5 MM. GABLE RESTRAINT STRAPS @ MAX 2M C/S, ON STD 100 X 75 MM. WALL PLATE WITH MS ANCHOR STRAPS @ MAX 1200 MM C/S. COPE 5 LEAD CAVITY FLASHING @ ROOF/WALL ABUTMENT. UPVC SOFFITS & FASCIAS TO MATCH WITH RW GOODS FIXED. 12.5 MM PLASTERBOARD & SKIM CEILING TO UNDERSIDE WITH 470 MM. GF INSULATION QUILT. LAID ABOVE RIDGE VENTS 2 NO TO BE INSTALLED

φ fw. 150 dia

WALLS: CANTY BLOCKWORK, OUTER & INNER LEAF 100 MM. DENSE CONG. BLOCK, 130 MM. CAVITY WITH 275 MM. TIES @ 470 MM. VERTICAL @ 750 MM. HORIZ C/S, WITH 75 MM. CELOTEX BOARD WITHIN ONTO DPC ONTO RAFT FOUNDATION AS SHOWN. LINTOLS: CATMC CALS TYPE, TO MANUF/RS RECOMMENDATIONS, & ASSOCIATED DRS
CLOSE CAVITY @ HEAD WITH 6 MM. CEMENT PARTICLE BOARD, & CLOSE CAVITIES AROUND OPENINGS WITH THERMABATE DRS (TO ACHIEVE 0.15 U/WK.) SANDSTONE QUINS AS REQUIRED.



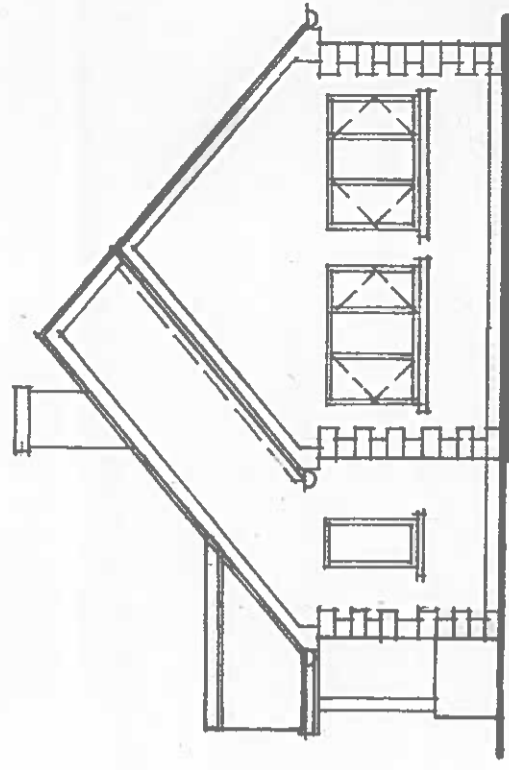
FRONT



REAR

FIMSHES: INTERNAL - 2 COAT PLASTER & SKIM.
EXTERNAL - DASH RENDER TO MATCH EXISTING

FLOOR: 100 MM. SCREED UPON 90 MM. RIGID INF. FLOOR BOARD ON VISQUEEN 1200G. DPM ONTO STRUCTURAL RAFT.
25 MM. CELOTEX. ADJ. TO EXT. CANTY WALLS AS SHOWN.



SIDE

AS PROPOSED 1:100