

Columns Permanent Street Lighting

Unit 35, Hither Green
Industrial Estate, Clevedon,
North Somerset, BS21 6XU

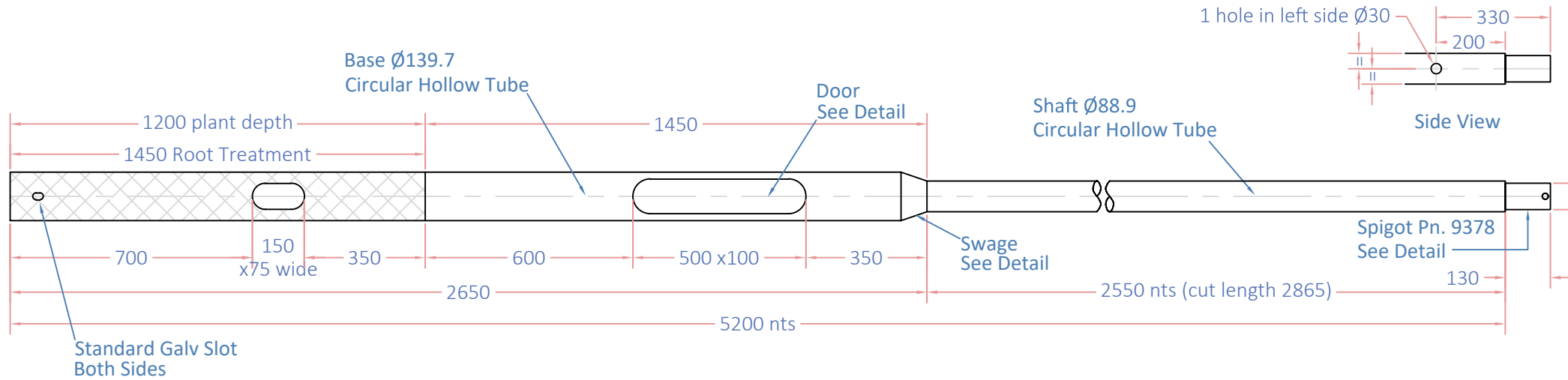
+44 (0) 1275 400570
info@prolectric.co.uk
www.prolectric.co.uk

Registered in England & Wales
Company no. 4607208

Dimensions Are In mm- Unless Stated

Do Not Scale Drawing- If In Doubt Ask

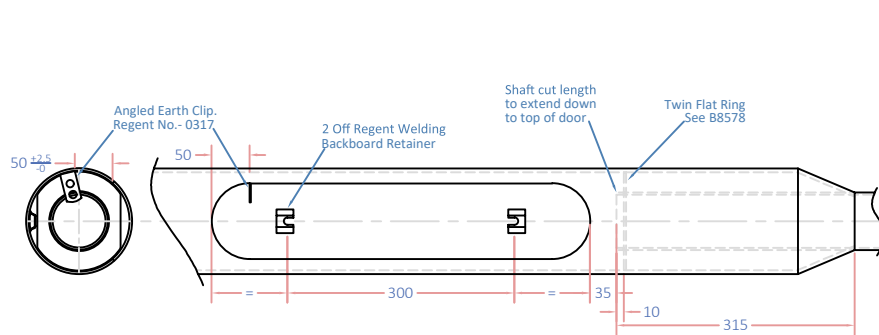
3rd Angle Projection



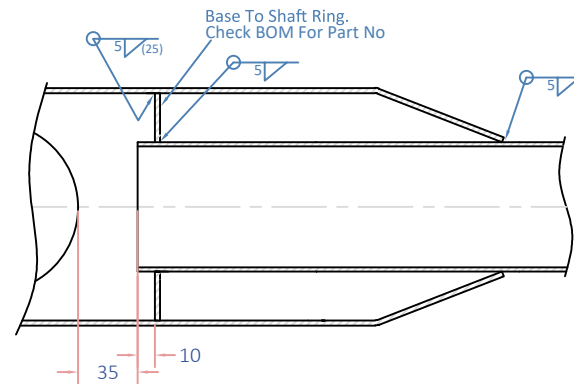
Door Detail

Swage Detail

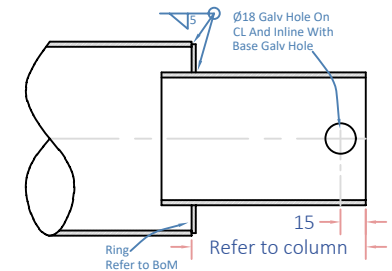
Spigot Detail



See B7024 For Detail



See B7800



Ø76 Post Top Spigot See B6465 For Detail

NOTES:
Remove All Burrs And Sharp Edges.
All Welds To BS EN 287 Part 1.
Hot Dip Galvanise To BS EN 1461.

For Finishing Detail See Works Order



Title:
4m Post Top Column With Spigot
Single Solar Panel

Approved:

--

Drawn:

DT

Checked:

Date:

06-12-23

Scale:

nts @ a4

REV 2 - DT - 12.02.24 - Shaft side hole was Ø20

REV 1 Initial Issue

B 12450

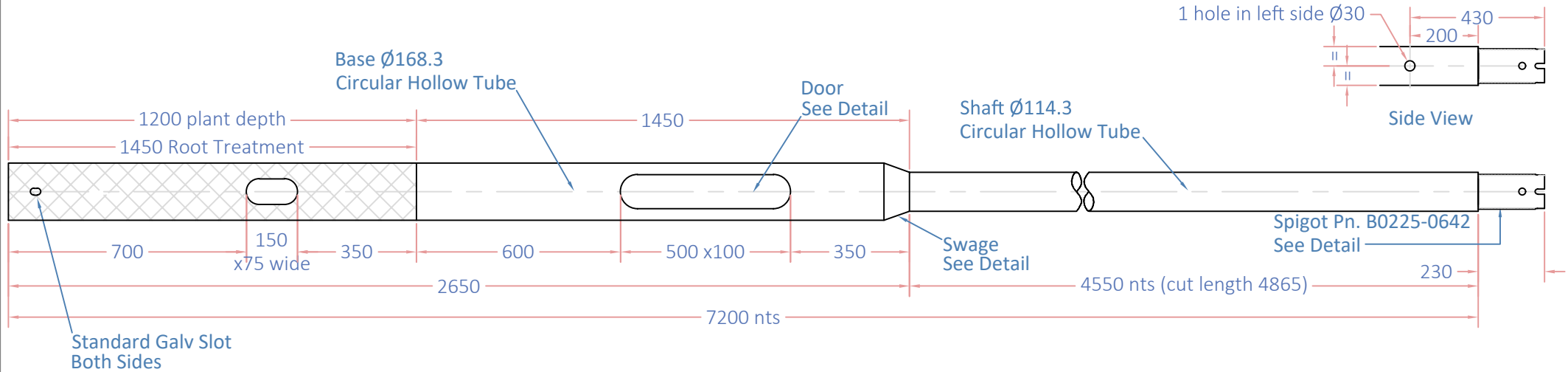
2

3rd Angle Projection 

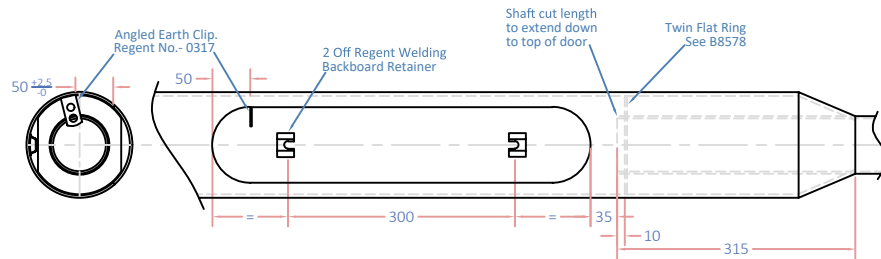
Dimensions Are In mm- Unless Stated

Do Not Scale Drawing- If In Doubt Ask

3rd Angle Projection

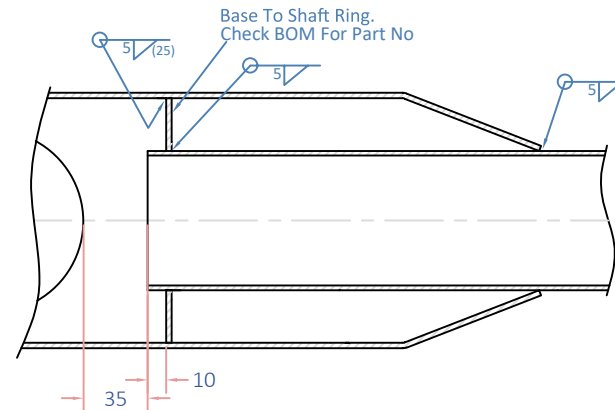


Door Details



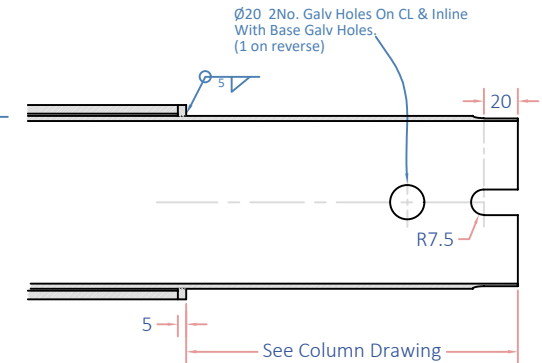
See B7024 For Detail

wage Detail



See B7800

Spigot Detail



Spigot Ring
See B1841

$\varnothing 101$ Spigot
See B0225-0642
For Detail

NOTES:
Remove All Burrs And Sharp Edges.
All Welds To BS EN 287 Part 1.
Hot Dip Galvanise To BS EN 1461.

For Finishing Detail See Works Order



Title:
6m Side Entry Column With Spigot
Heavy Duty Suitable For
0.89m² 43.2Kg

B 12447

2

Approved:

--

Drawn:
DT

Checked:

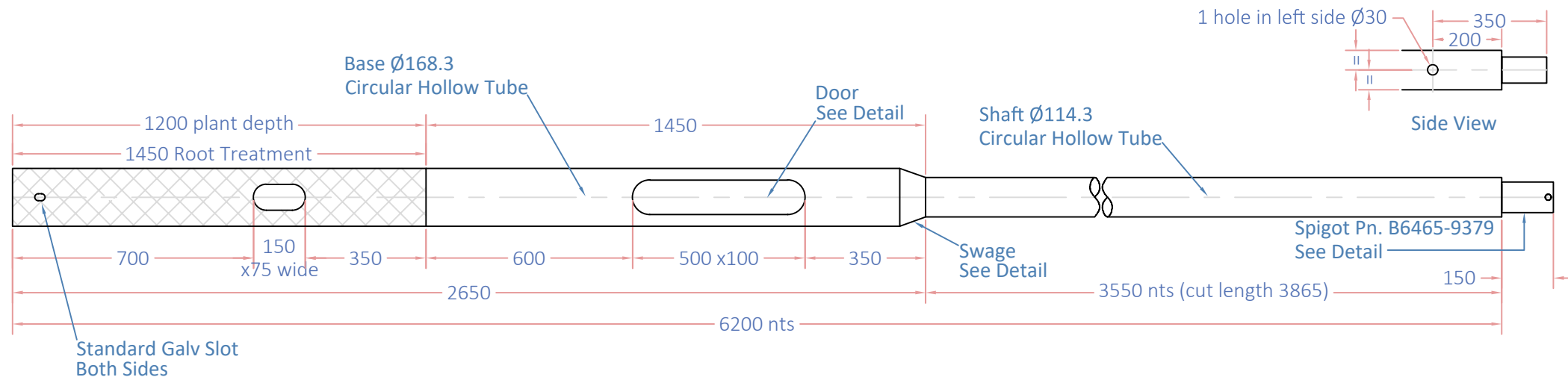
Date:

30-11-23

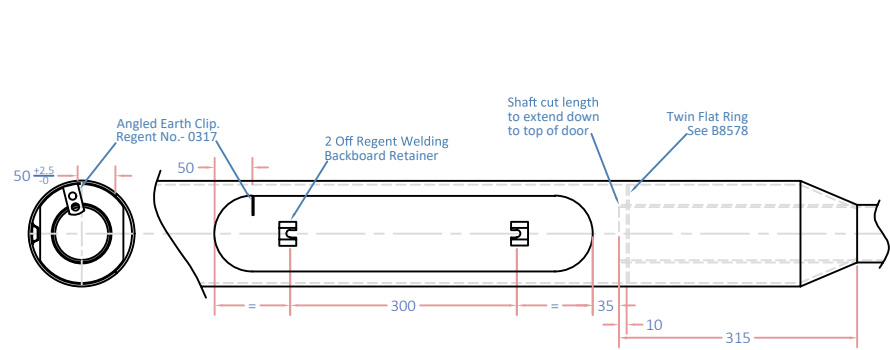
Scale:
nts @ a4

REV 2 - DT - 12.02.24 - Shaft side hole was $\varnothing 20$

REV 1 Initial Issue

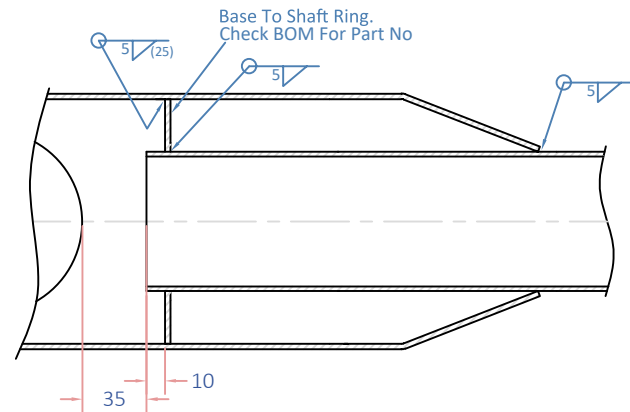


Door Detail



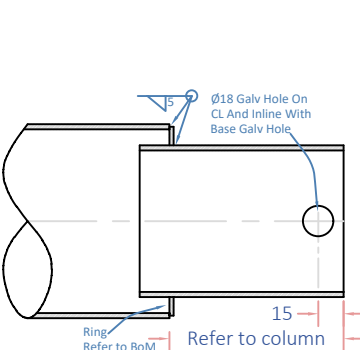
See B7024 For Detail

Swage Detail



See B7800


Spigot Detail

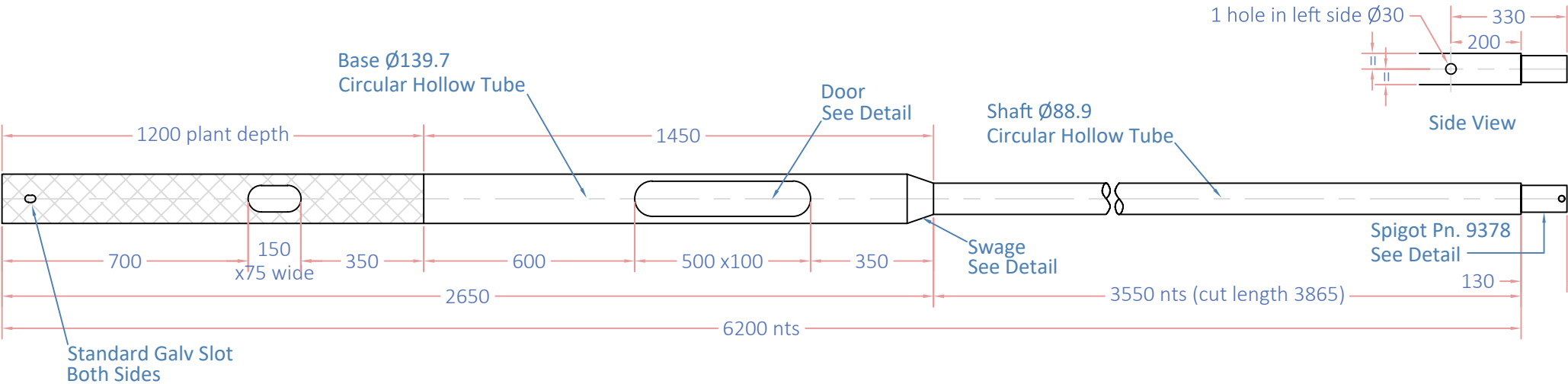


Ø88.9 Post Top Spigot See B6465-9379 For Detail

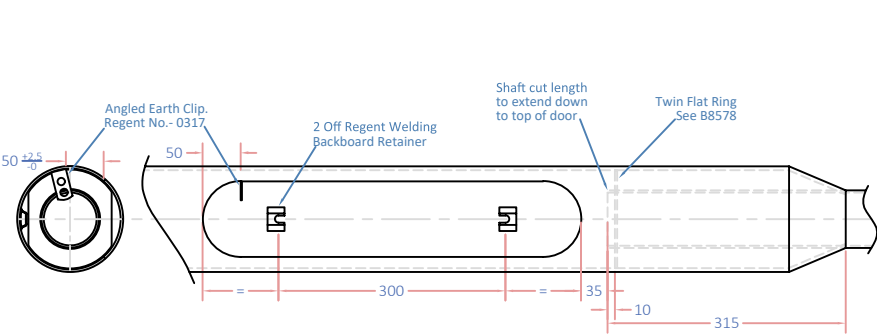
NOTES:
Remove All Burrs And Sharp Edges.
All Welds To BS EN 287 Part 1.
Hot Dip Galvanise To BS EN 1461.

For Finishing Detail See Works Order

	Title: 5m Post Top Colum With Spigot Twin Solar Panel		Approved: --		Date: 06-12-23		
			Drawn: DT			Checked:	
	B 12451		2				Scale: nts @ a4
					REV 2 - DT - 12.02.24 - Shaft side hole was Ø20		
					REV 1 Initial Issue		

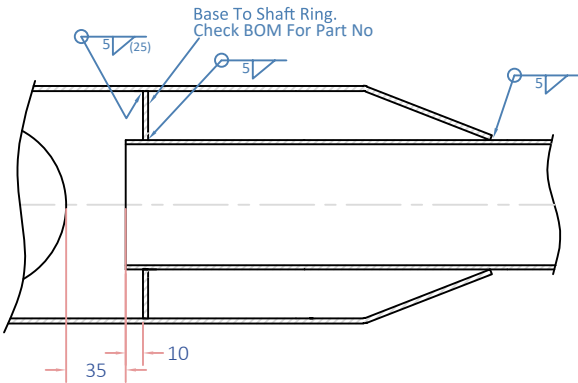


Door Detail



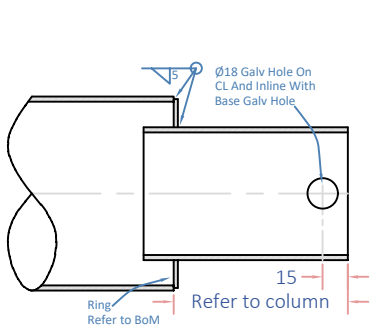
See B7024 For Detail

Swage Detail



See B7800

Spigot Detail



Ø76 Post Top Spigot See B6465 For Detail

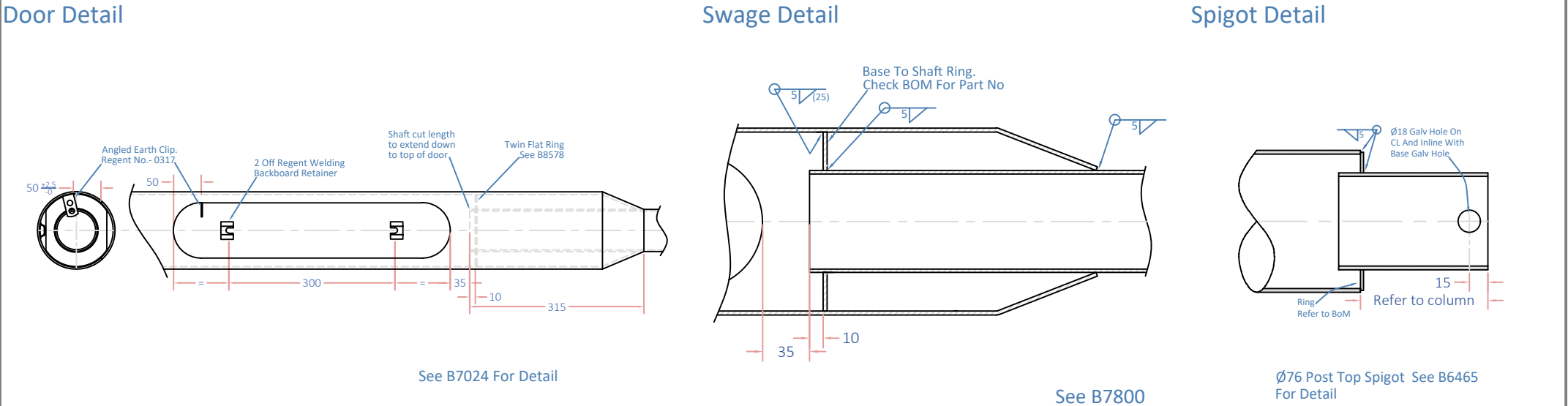
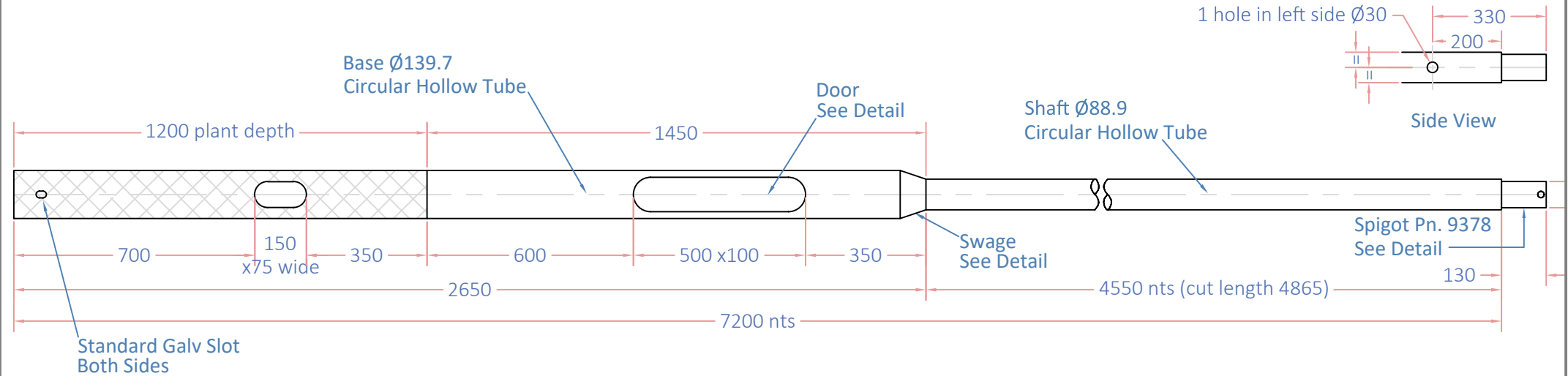
NOTES:
Remove All Burrs And Sharp Edges.
All Welds To BS EN 287 Part 1.
Hot Dip Galvanise To BS EN 1461.

For Finishing Detail See Works Order

	Title: 5m Post Top Column With Spigot AE3-90		Approved: --	
	Drawn: DT		Checked:	
	Date: 10-11-23		Scale: nts @ a4	
	REV 2 - DT - 12.02.24 - Shaft side hole was Ø20		REV 1 Initial Issue	

B 12459

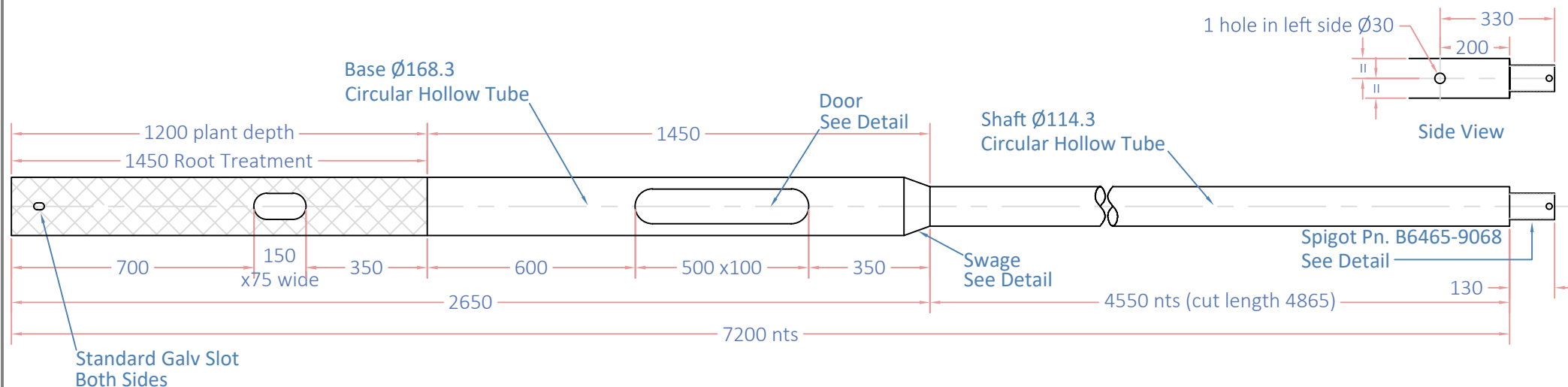
2



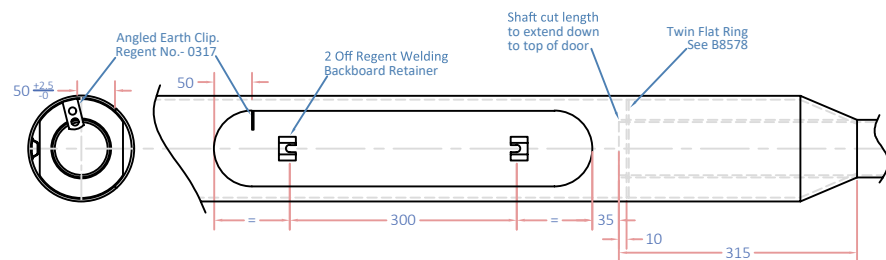
Dimensions Are In mm- Unless Stated

Do Not Scale Drawing- If In Doubt Ask

3rd Angle Projection

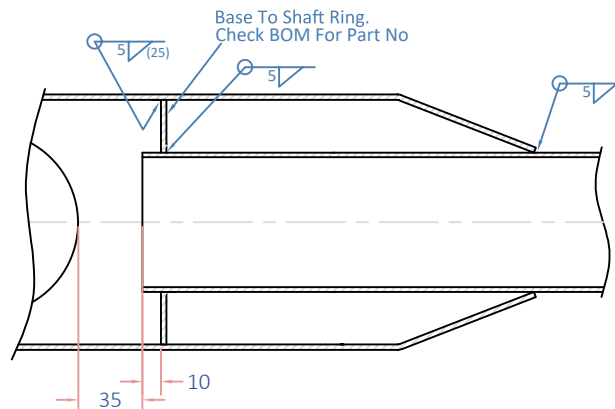


Door Detail



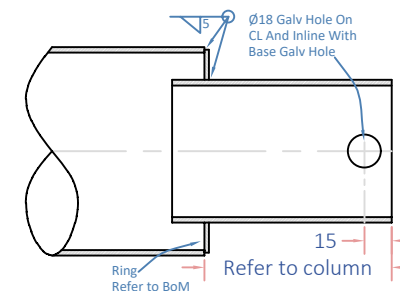
See B7024 For Detail

Swage Detail



See B7800

Spigot Detail



Ø76 Post Top Spigot See B6465 For Detail

For Finishing Detail See Works Order

NOTES:
Remove All Burrs And Sharp Edges.
All Welds To BS EN 287 Part 1.
Hot Dip Galvanise To BS EN 1461.



Title:
6m Post Top Column With Spigot
Heavy Duty Suitable For
0.89m2 43.2Kg

B 12469

2

Approved:

DT

Checked:

Date:

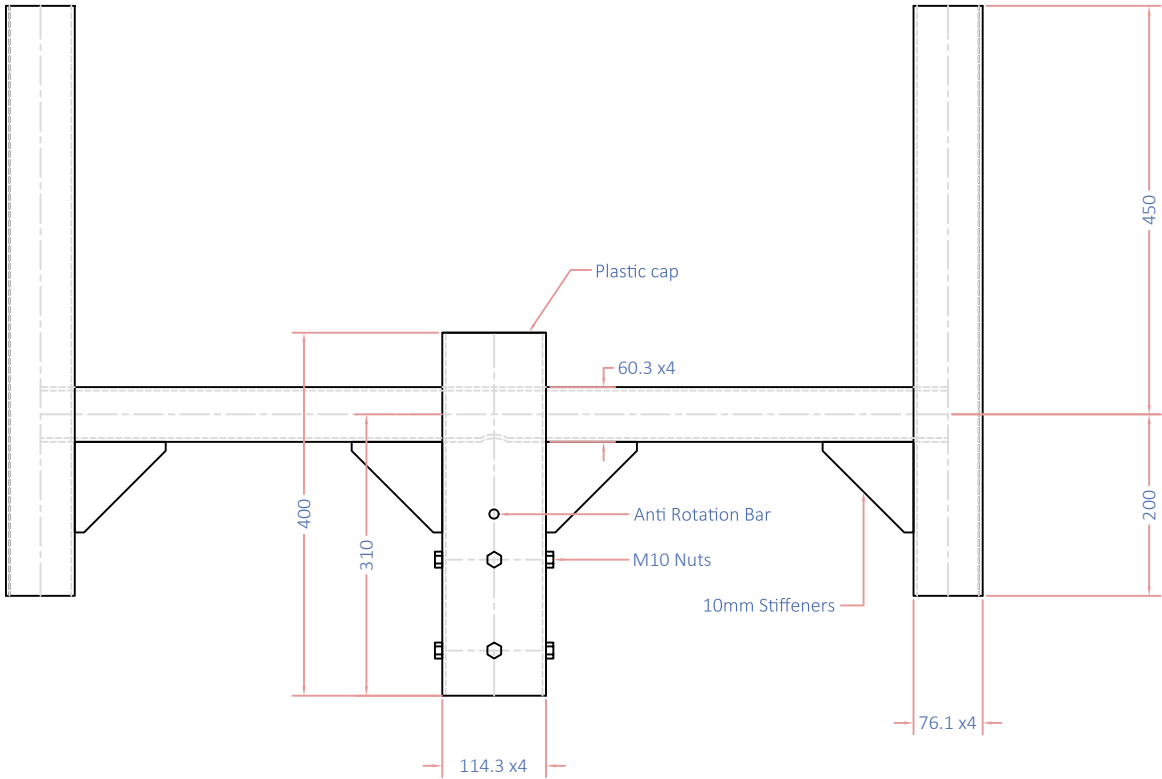
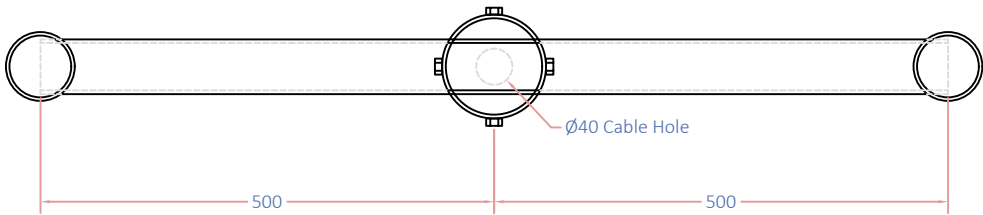
08-02-23

Scale:

nts @ a4

REV 2 - DT - 09.02.24 Shaft hole was Ø20

REV 1 Initial Issue



Title:
Bracket for B12447
(6m SE Column With Spigot
Twin Solar)

Approved:
--

Drawn:
DT

Checked:

Date:
21.12.23

Customer:
Prolectric (Hill and Smith)

Scale:
nts @ a4

For Finishing Detail See Works Order

REV 2 - DT - 21.12.23 SE Spigot to suit 114 dia Bracket B0741

REV 1 Initial Issue

NOTES:
Remove All Burrs And Sharp Edges.
All Welds To BS EN 287 Part 1.
Hot Dip Galvanise To BS EN 1461.
Calculated Mass: 22Kg

B 12458

1