



PEARSON (A20)

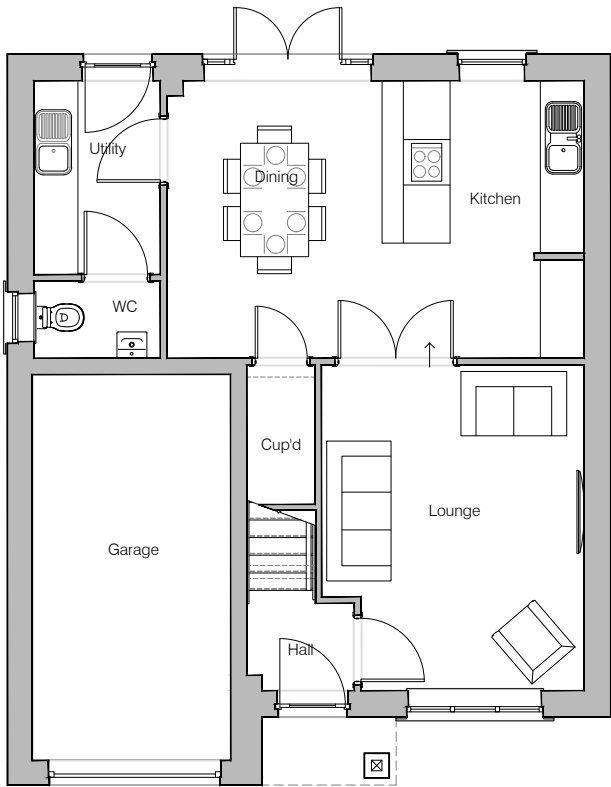
Planning Drawings - Contemporary

GF: 47.09 m2 (506.87 ft2)
FF: 59.46 m2 (640.02 ft2)
TOTAL: 107 m2 (1147 ft2)

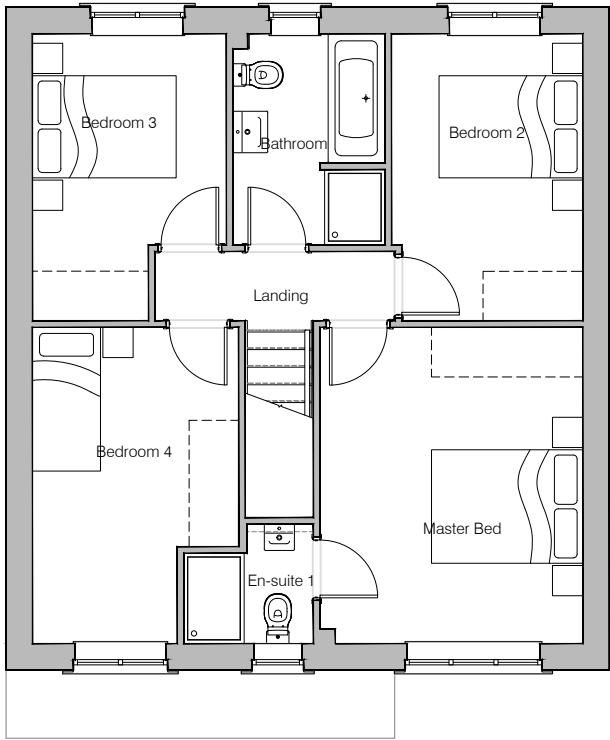
© **Story Homes.**

Story House, Lords Way, Kingmoor Business Park,
Carlisle, Cumbria. CA6 4SL.

Tel 01228 404550
Fax 01228 404551



Ground Floor Layout



First Floor Layout



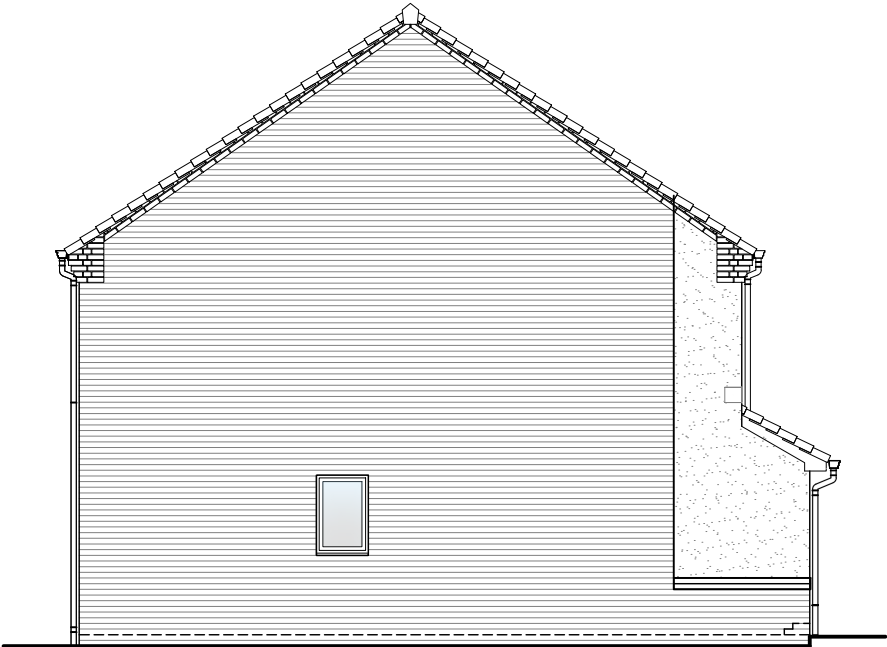
HOUSE TYPE
PEARSON (A20)

DRAWING
Planning Layout 1

DRAWN BY	SDM	DATE	16/9/22
CHECKED BY	CM, AH	SCALE	1:100@A3
DWG PACK	A/20.2	DRAWING NUMBER	PRN-PLP1
Revisions	Notes	Date	REVISION
A	Brick plinth shown to base of canopy support post.	11.03.24	A



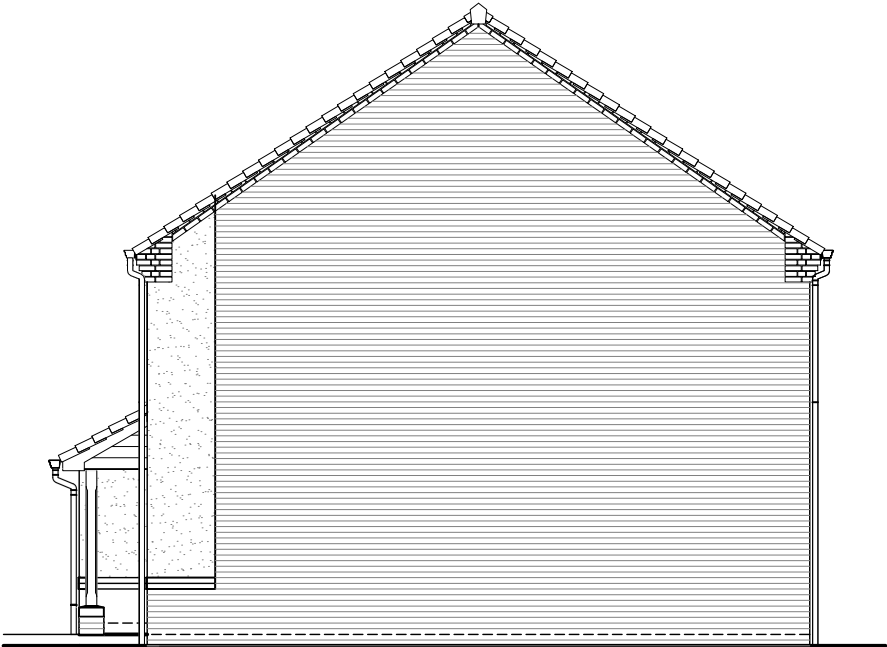
Front Elevation



Left Elevation



Rear Elevation



Right Elevation

NOTES

PV Solar Panels
Elevations indicate typical arrangement only - number of panels required and location / array to be plot specific. PV panels to be in-roof type.



HOUSE TYPE

PEARSON (A20)

DRAWING

Planning Elevation C

DRAWN BY	SDM	DATE	01/02/19
CHECKED BY	CM, AH	SCALE	1:100@A3
DWG PACK	A/20.2	DRAWING NUMBER	PRN-PLE-C
		REVISION	-

Revisions	Notes	Date
-	-	-