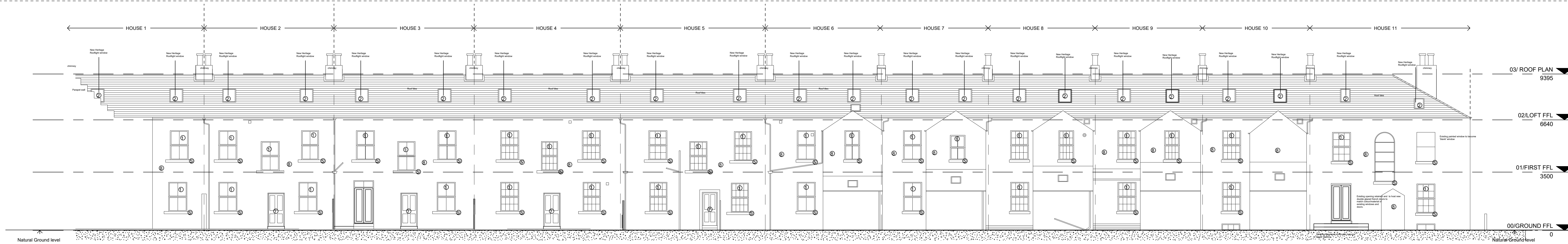


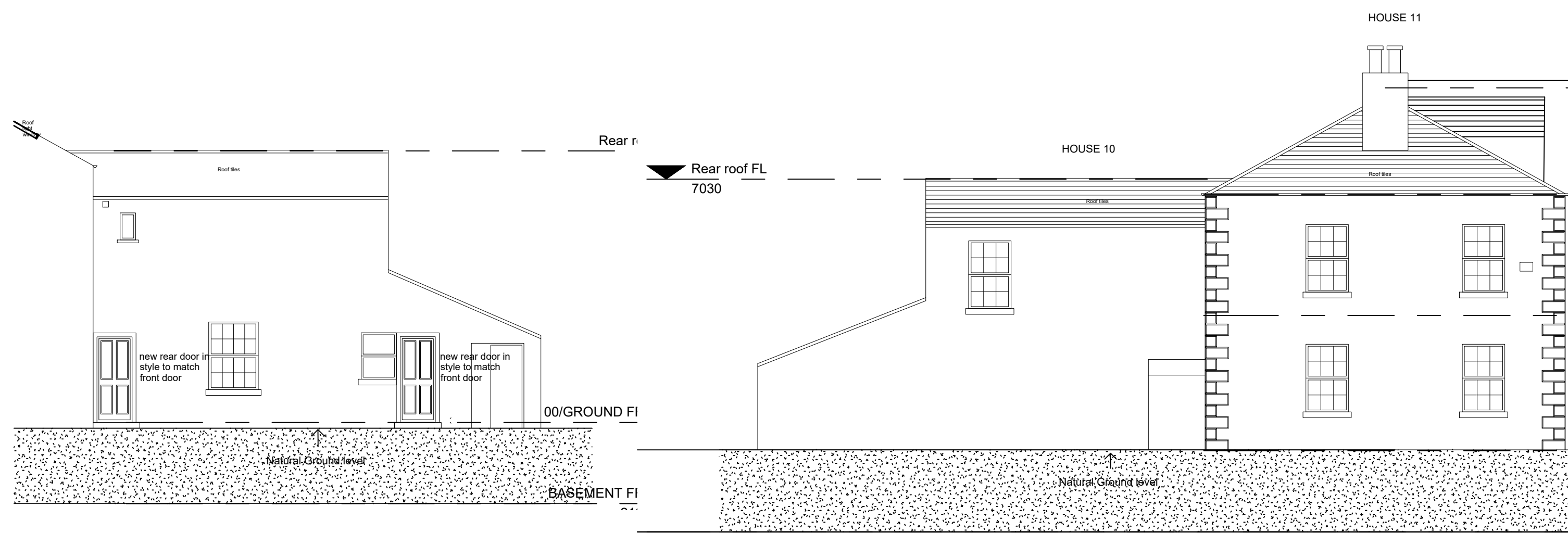
AP Elevation 1(From Lonsdale terrace)

1 : 100



AP Elevation 2 (From Rear)

1 : 100

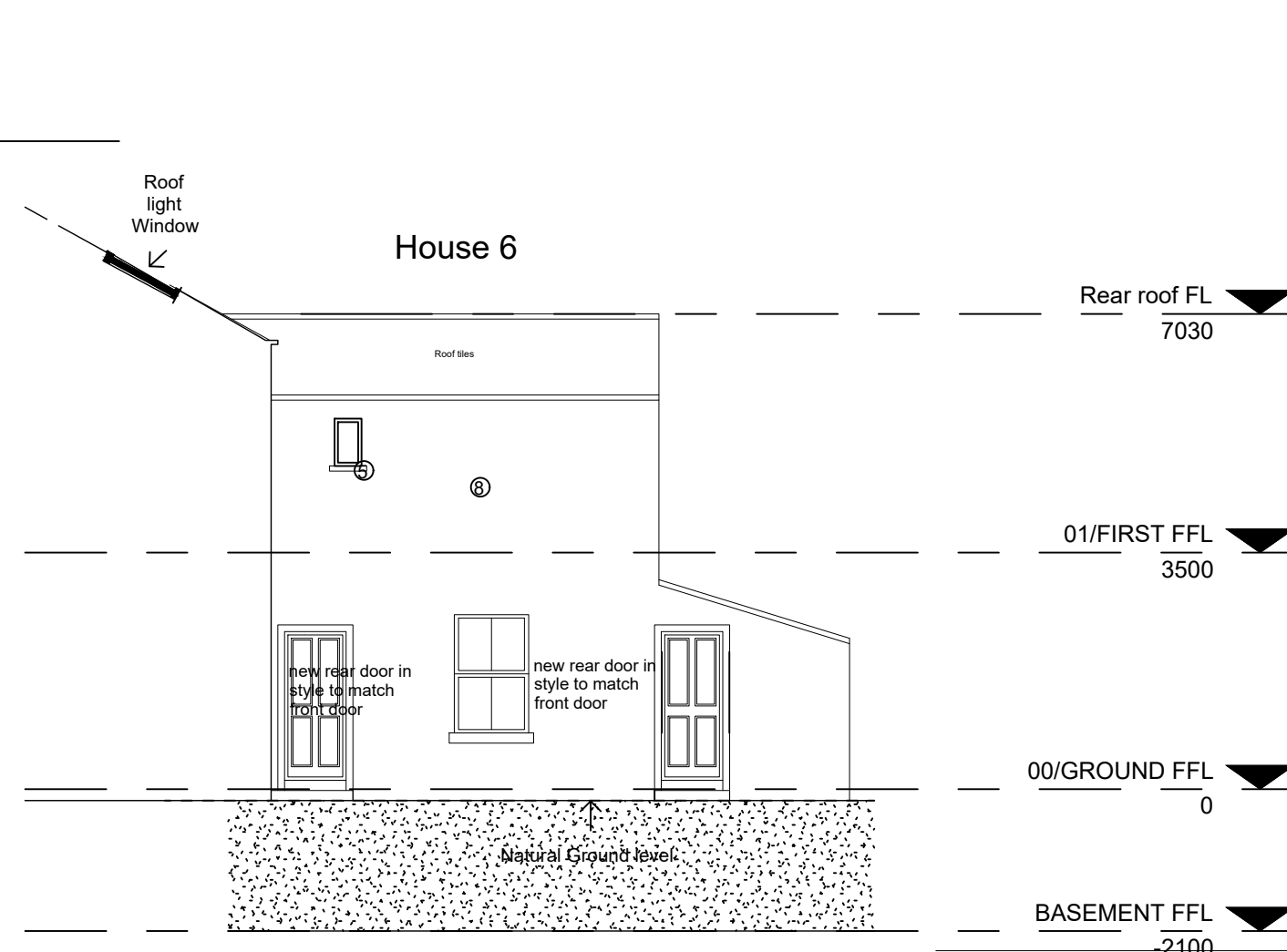


Elevation 10 (House 10 side elevation)

1 : 100

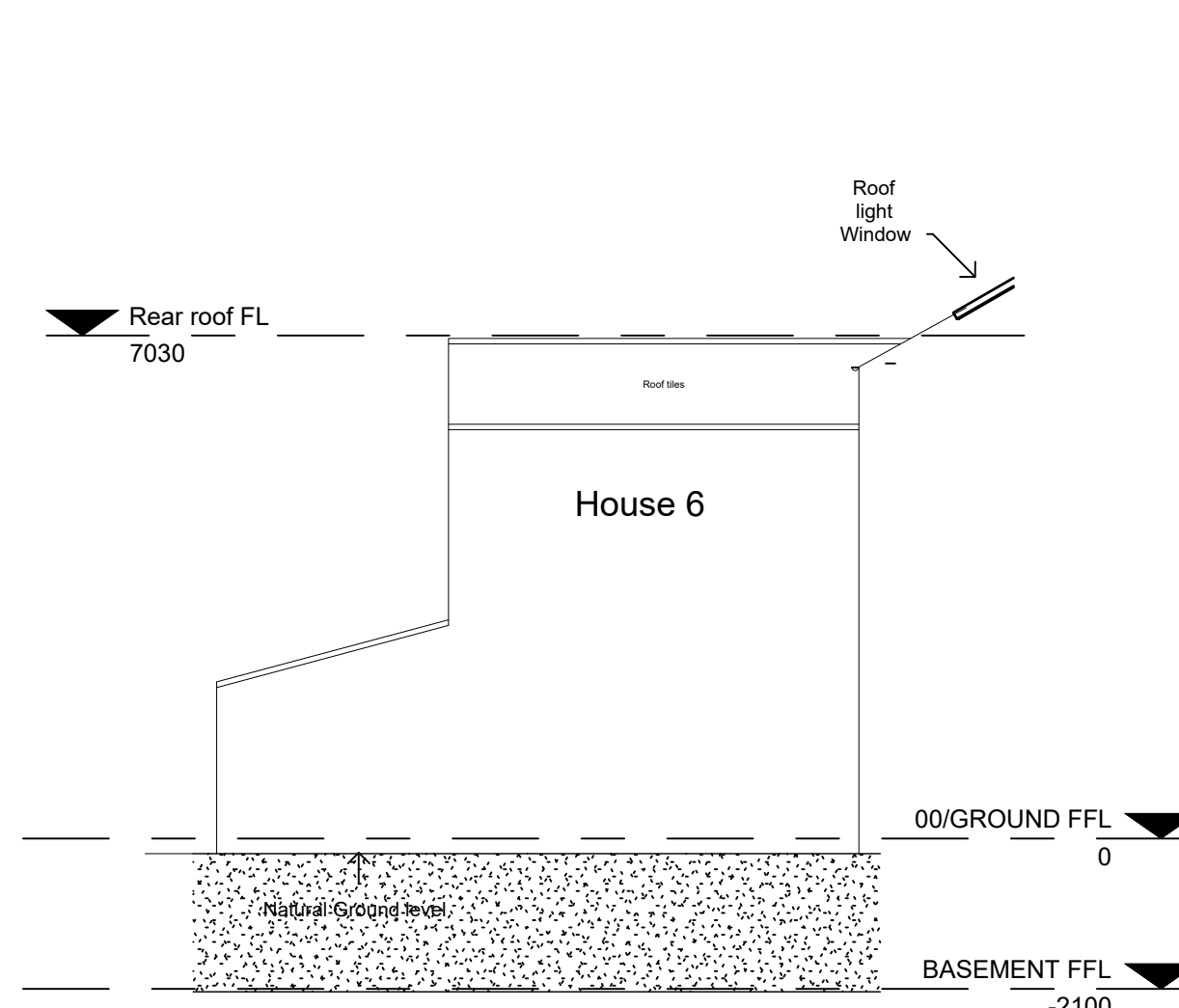
Elevation 4 (House 11+10 side elevation)

1 : 100



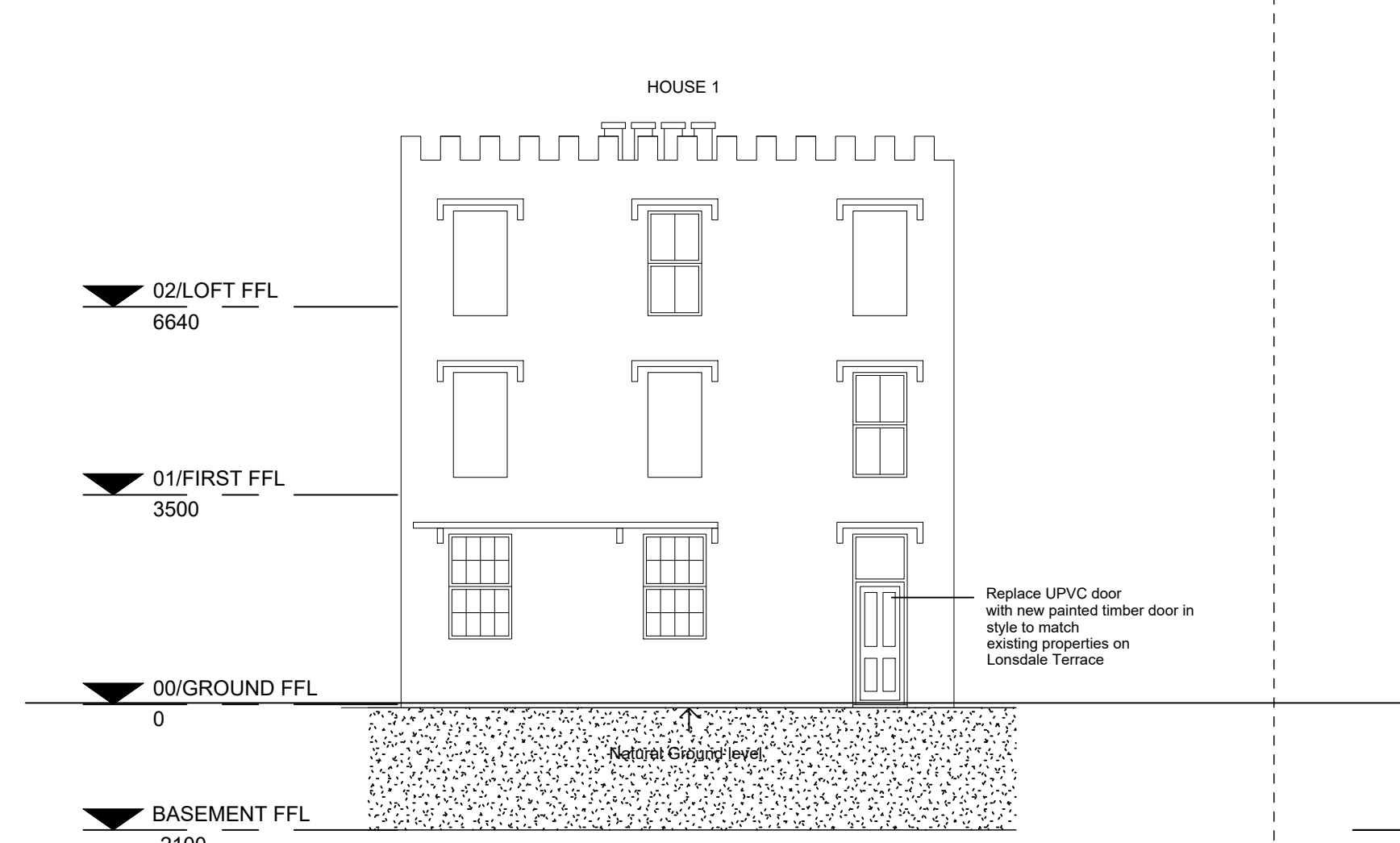
Elevation 6 (house 6 side elevation)

1 : 100



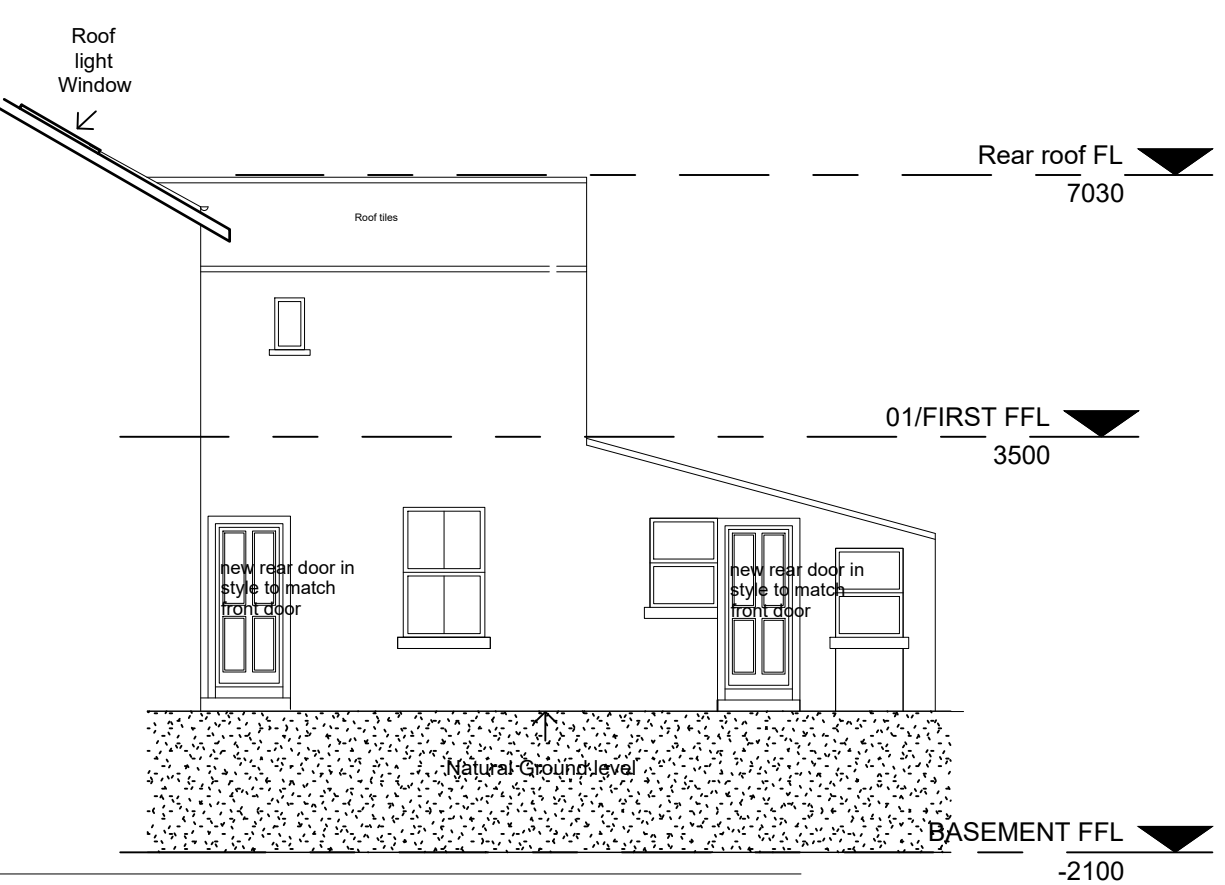
Elevation 6a (house 6 side elevation)

1 : 100



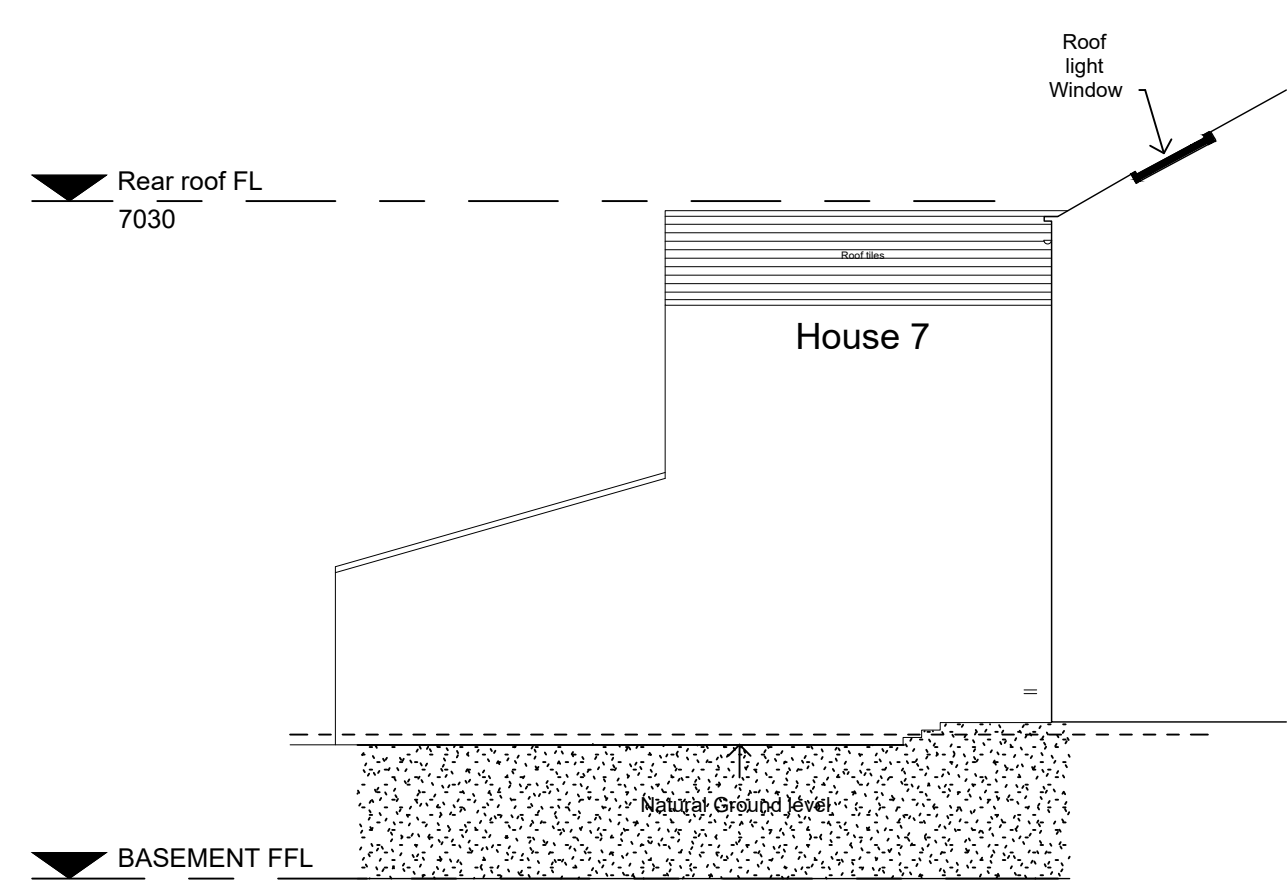
Elevation 3 (house 1 elevation from Finkle Street)

1 : 100



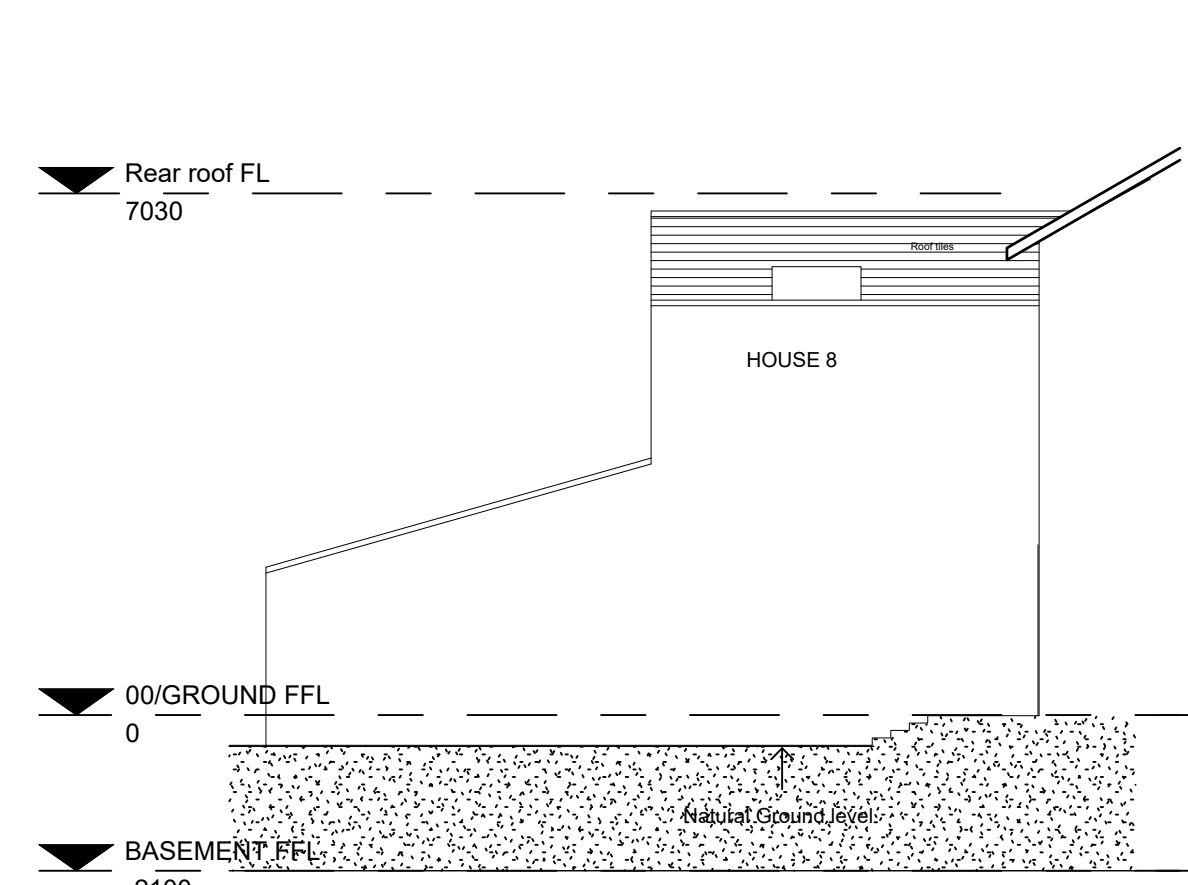
Elevation 7 (house 7 side elevation)

1 : 100



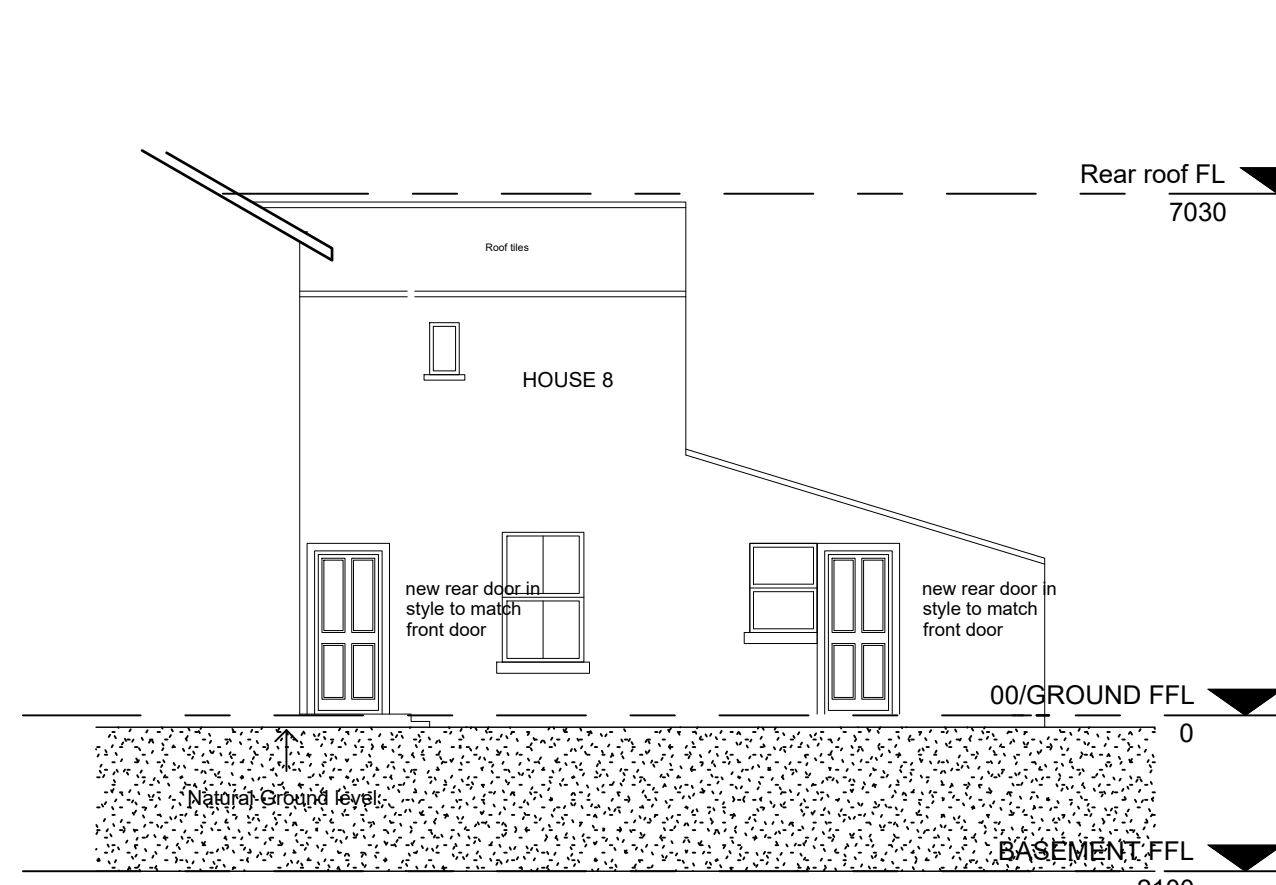
Elevation 7a (house 7 side elevation)

1 : 100



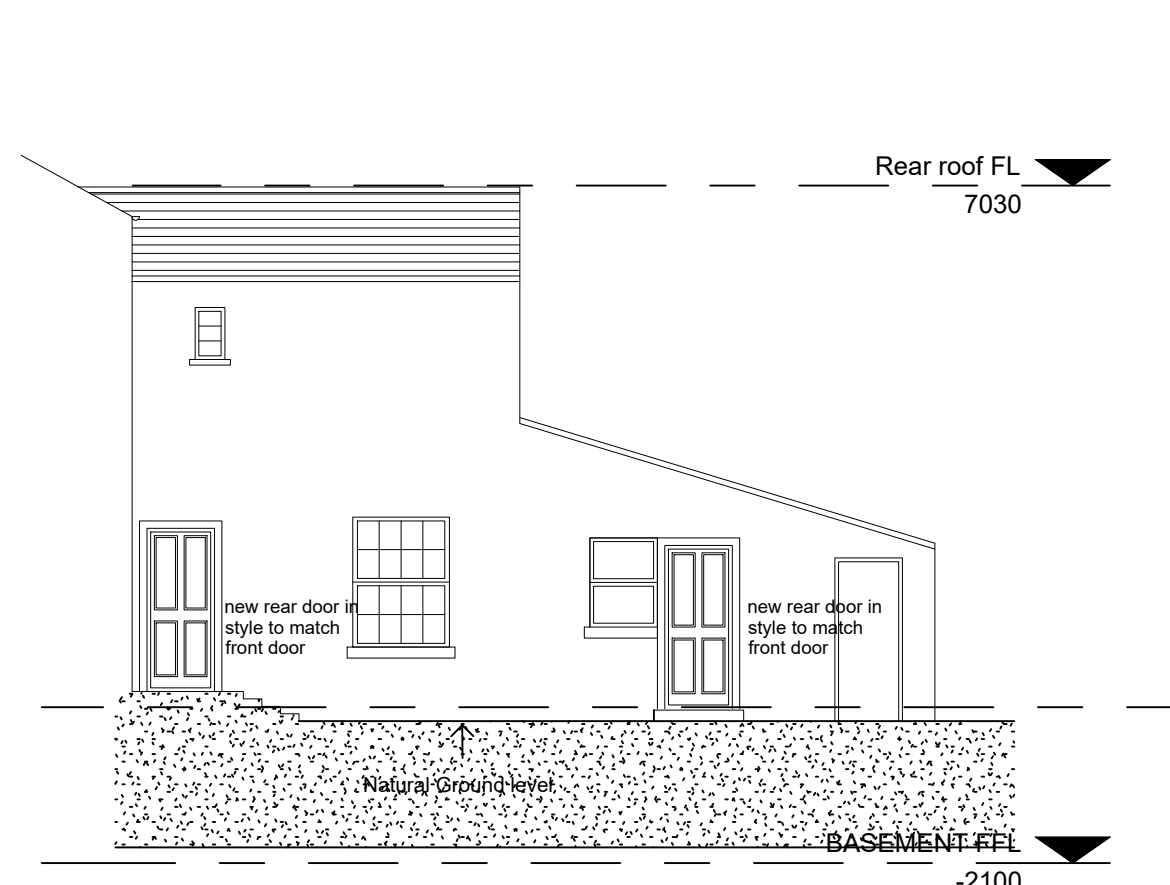
Elevation 8a (house 8 side elevation)

1 : 100



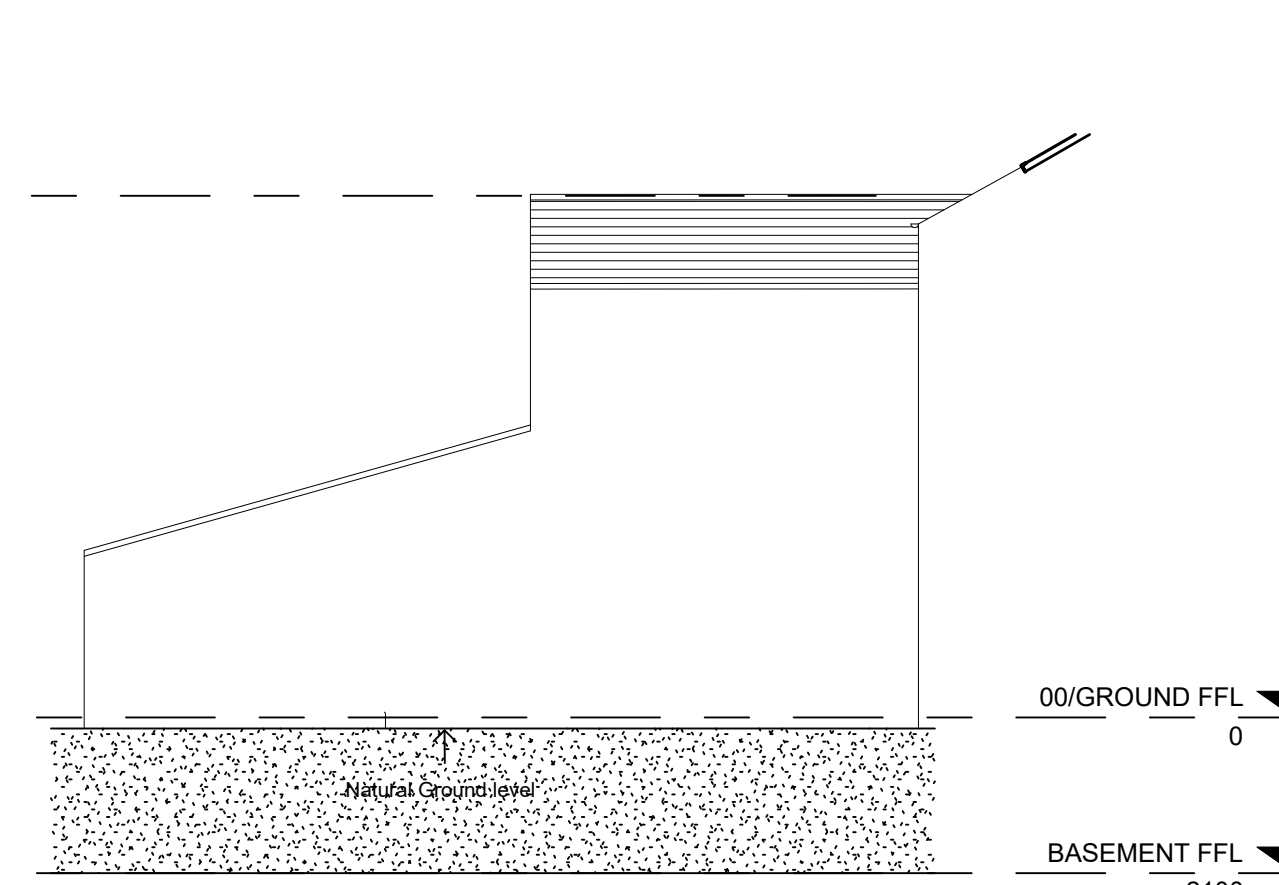
Elevation 8 (House 8 side elevation)

1 : 100



Elevation 9 (House 9 side elevation)

1 : 100



Elevation 9 (House 9 side elevation)

1 : 100

rev	original by	description	date	drawn by
SS	Franklin House	4 Victoria Avenue	Jan 2021	KMc
SS	Hemgate	102-104		
	tel: 01423 528999			
	www.remarkabledesigns.co.uk			
Remarkable Developments Ltd				
Residential Development of Existing Properties 1-11 Lonsdale Terrace St Bees				
Elevations As Proposed				
computer file	proj date	scale	drawn by	checked by
2019_307	Oct. 20	As Indicated At A0	J	J
P201-02		Planning		
This drawing is to be read in conjunction with all related drawings. Do not scale from this drawing. All dimensions must be checked and verified on site before commencing any work or producing shop drawings. The originator should be notified immediately of any discrepancy. The drawing is copyright and remains the property of M.A.C. Architects Ltd.				

