



OXLEY (A20)

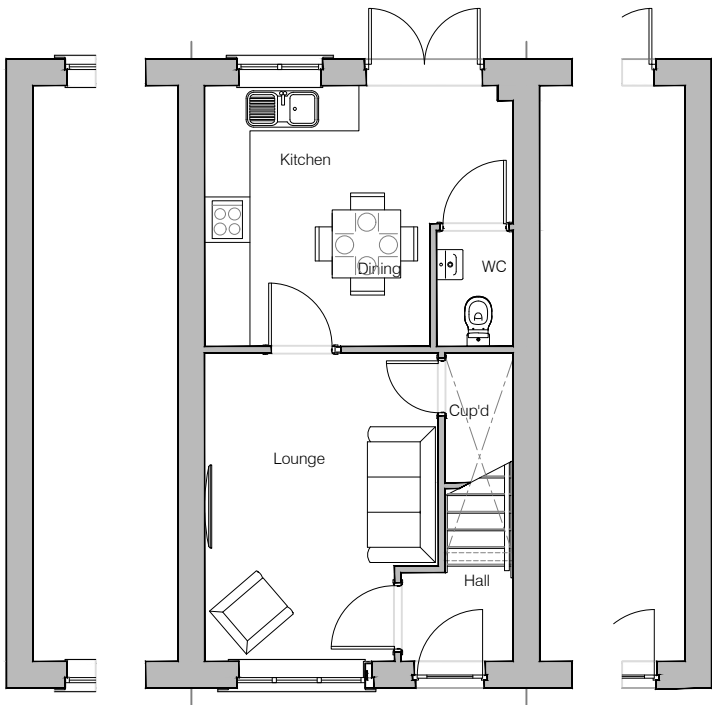
Planning Drawings - Contemporary

GF: 31.68 m2 (341.00 ft2)
FF: 31.68 m2 (341.00 ft2)
TOTAL: 63 m2 (682 ft2)

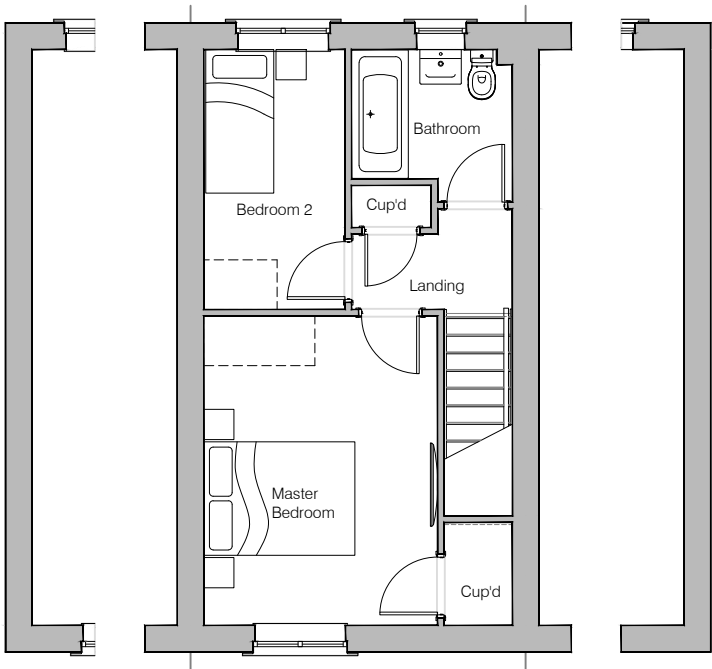
© **Story Homes.**

Story House, Lords Way, Kingmoor Business Park,
Carlisle, Cumbria. CA6 4SL.

Tel 01228 404550
Fax 01228 404551



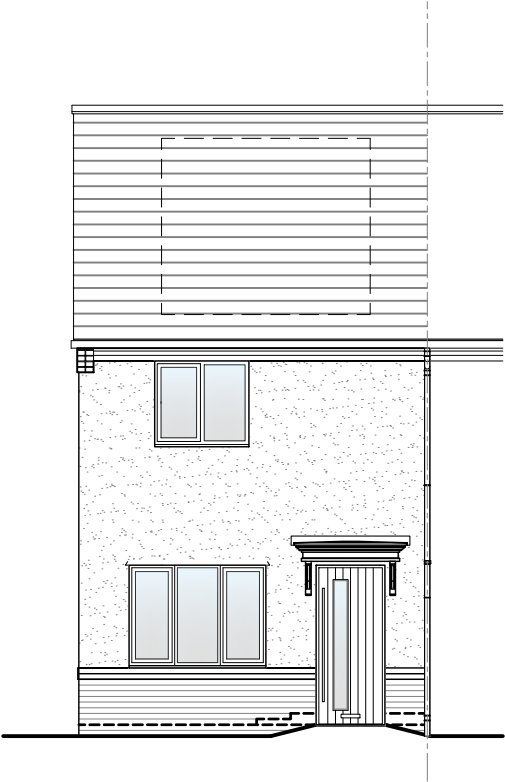
Ground Floor Layout



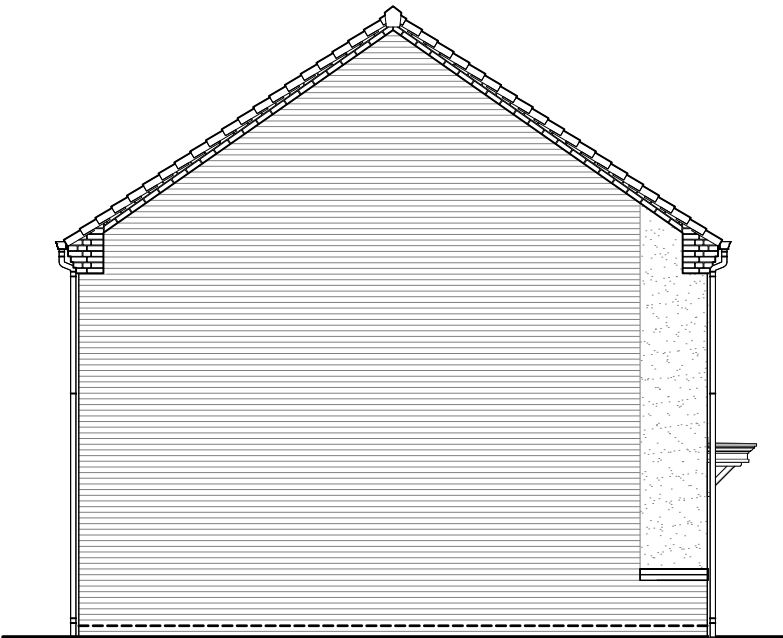
First Floor Layout



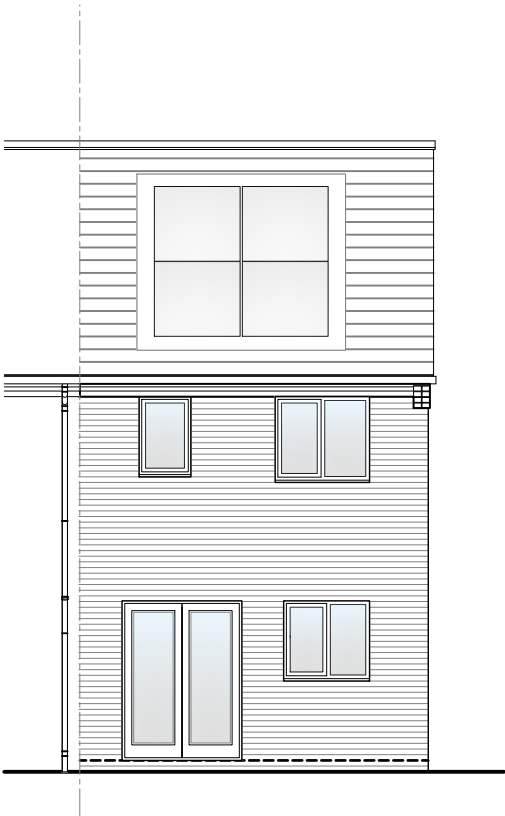
HOUSE TYPE			
OXLEY (A20)			
DRAWING			
Planning Layout 1			
DRAWN BY	JB	DATE	28/07/23
CHECKED BY	AA, AH	SCALE	1:100@A3
DWG PACK	DRAWING NUMBER	REVISION	
A/20.1	OXY-PLP1	-	
Revisions	Notes	Date	
<div>© Story Homes.</div> <div>Story House, Lords Way, Kingmoor Business Park, Carlisle, Cumbria. CA6 4SL</div> <div>Tel 01228 404550 Fax 01228 404551</div>			



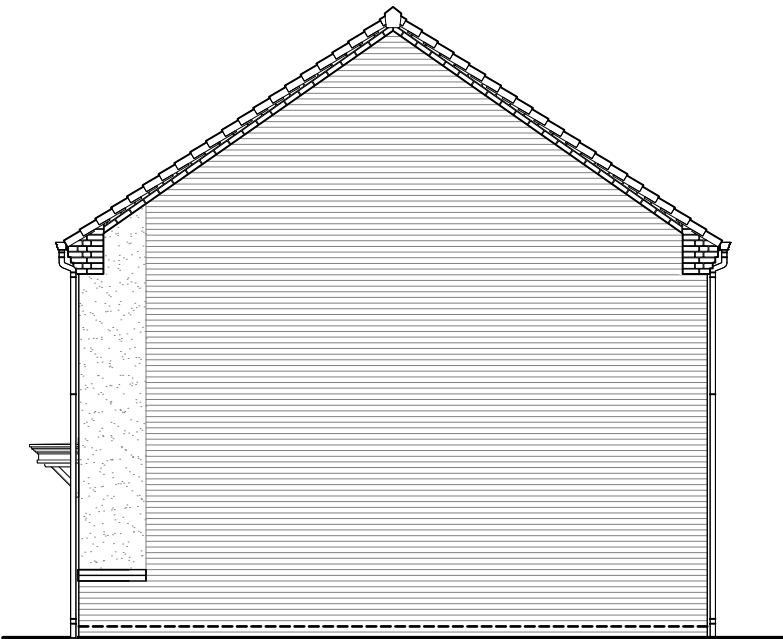
Front Elevation



Left Elevation



Rear Elevation



Right Elevation

NOTES

PV Solar Panels
Elevations indicate typical arrangement only - number of panels required and location / array to be plot specific. PV panels to be in-roof type.



HOUSE TYPE

OXLEY (A20)

DRAWING

Planning Elevation C

DRAWN BY	JB	DATE	28/07/23
CHECKED BY	AA, AH	SCALE	1:100@A3
DWG PACK	DRAWING NUMBER	REVISION	
A/20.1	OXY-PLE-C	-	
Revisions	Notes	Date	

© **Story Homes.**

Story House, Lords Way, Kingmoor Business Park,
Carlisle, Cumbria. CA6 4SL

Tel 01228 404550 **Fax 01228 404551**