



OXLEY (A)

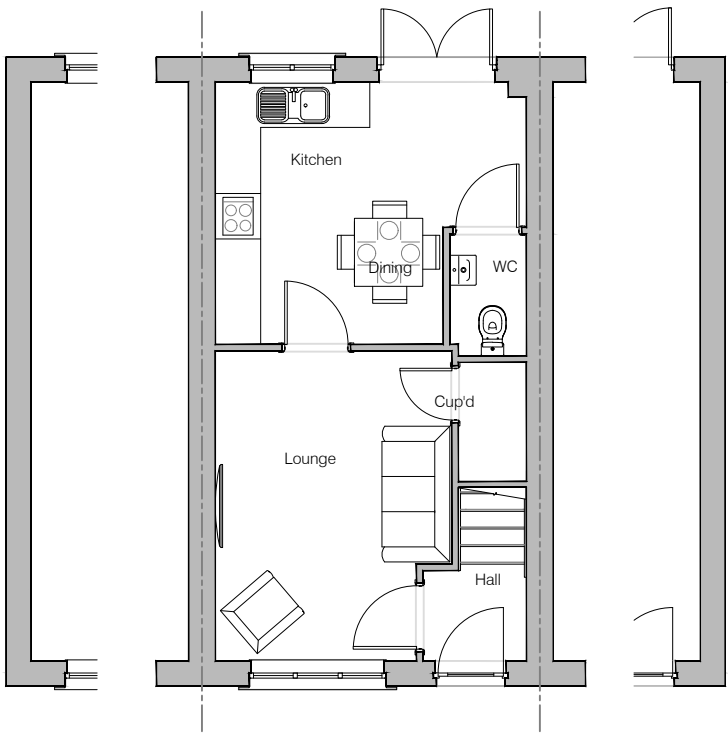
Planning Drawings

GF: 32.09 m2 (345.41 ft2)
FF: 32.09 m2 (345.41 ft2)
TOTAL: 64.18 m2 (690.83 ft2)

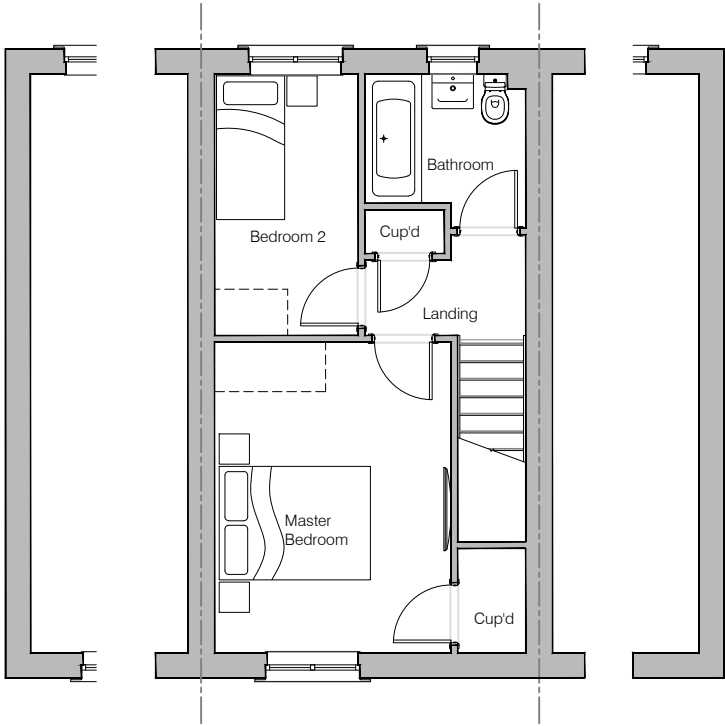
© **Story Homes.**

Story House, Lords Way, Kingmoor Business Park,
Carlisle, Cumbria. CA6 4SL.

Tel 01228 404550
Fax 01228 404551



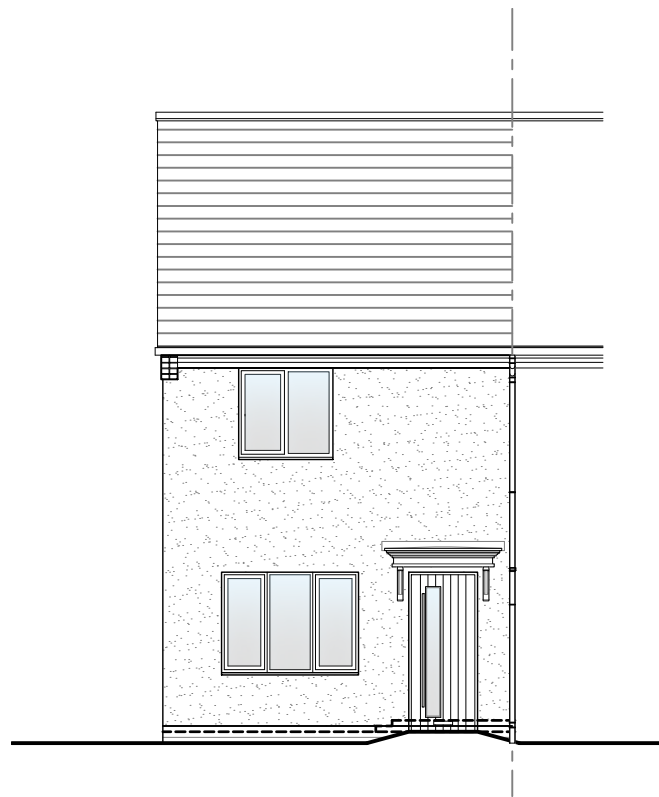
Ground Floor Layout



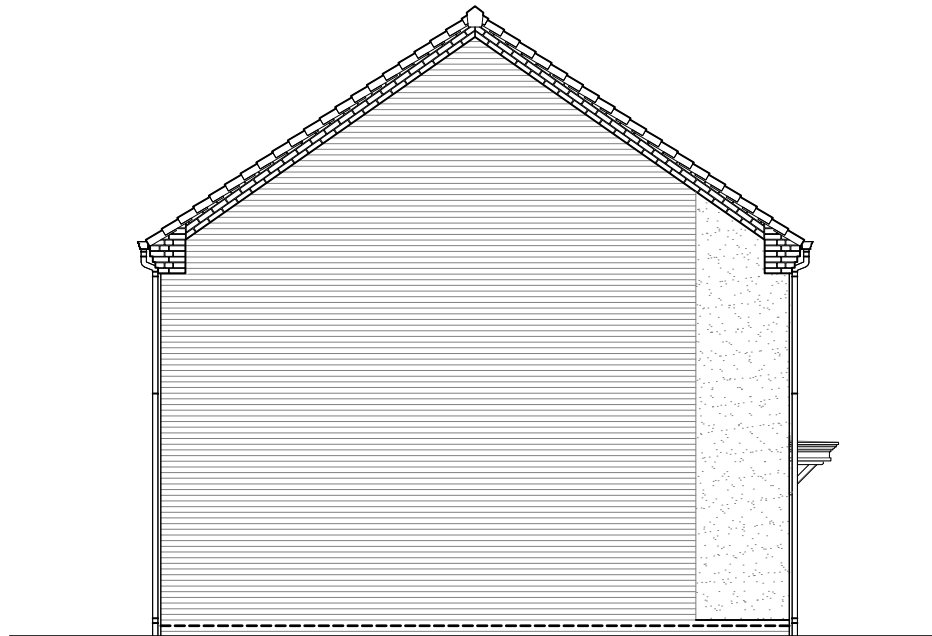
First Floor Layout



HOUSE TYPE			
OXLEY (A)			
DRAWING			
Planning Layout 1			
DRAWN BY	JR	DATE	01/02/19
CHECKED BY	CTM, AH, AO	SCALE	1:100@A3
DWG PACK	DRAWING NUMBER	REVISION	
A/02	OXY-PLP1	A	
Revisions	Notes	Date	
A	Bathroom window repositioned.	09/07/20	
<div>© Story Homes. Story House, Lords Way, Kingmoor Business Park, Carlisle, Cumbria. CA6 4SL</div> <div>Tel 01228 404550Fax 01228 404551</div>			



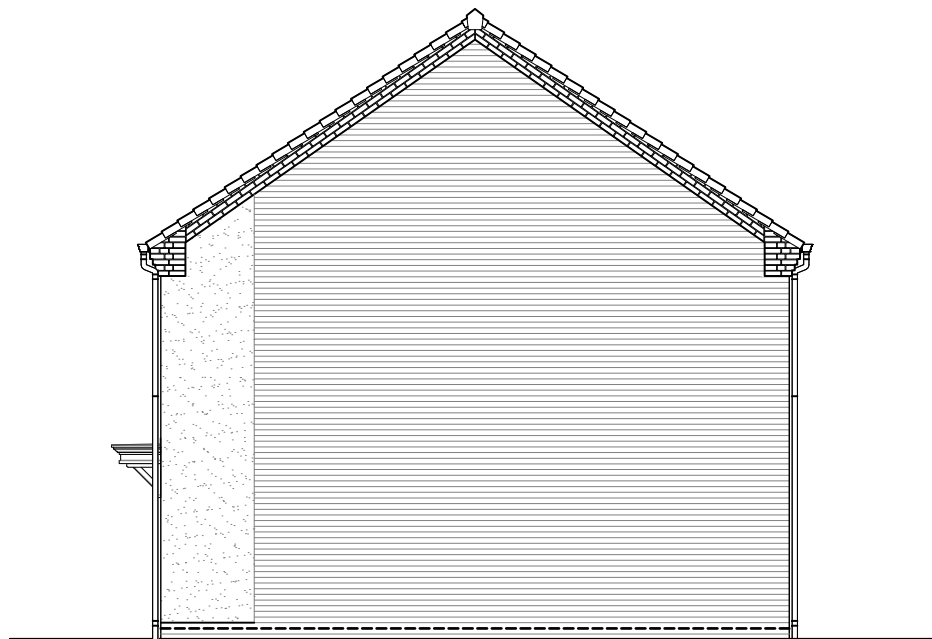
Front Elevation



Left Elevation



Rear Elevation



Right Elevation

NOTES



HOUSE TYPE

OXLEY (A)

DRAWING

Planning Elevation C

DRAWN BY JR DATE 01/02/19

CHECKED BY CTM, AH, AO SCALE 1:100@A3

DWG PACK A/02 DRAWING NUMBER OXY-PLE C REVISION A

Revisions Notes Date

A Rear 1st floor Bathroom window repositioned. Canopy updated. 09/07/20

© Story Homes.

Story House, Lords Way, Kingmoor Business Park,
Carlisle, Cumbria. CA6 4SL

Tel 01228 404550

Fax 01228 404551